

Product datasheet for **RC222813**

ARHGAP9 (NM_001080156) Human Tagged ORF Clone

Product data:

Product Type:	Expression Plasmids
Product Name:	ARHGAP9 (NM_001080156) Human Tagged ORF Clone
Tag:	Myc-DDK
Symbol:	ARHGAP9
Synonyms:	10C; RGL1
Mammalian Cell Selection:	Neomycin
Vector:	pCMV6-Entry (PS100001)
E. coli Selection:	Kanamycin (25 ug/mL)



[View online »](#)

ORF Nucleotide Sequence:

>RC222813 representing NM_001080156
 Red=Cloning site Blue=ORF Green=Tags(s)

TTTTGTAATACGACTCACTATAGGGCGGCCGGAATTCGTCGACTGGATCCGGTACCGAGGAGATCTGCC
 GCC**CGCATCGCC**

ATGTCAGAGCCCCCTGTGTACTGTAACCTGGTGGACCTTCGCCGCTGTCCCTCGTCCACCCCCAGGCC
 CTGCATGCCCCCTGCTGCAGAGGCTGGATGCCTGGGAGCAGCACCTGGACCCCAACTCTGGACGCTGCTT
 CTACATAAATTCAGTACTGCTGCAAGTCTGGAAGCCCCCGCCGCGCAGTCGACGAGAGCAACCCCT
 GGCTCCATGGAGGGGACACAGACCTGAAGAGGAACAATGATGTCCTGCAACCTCAGGCAAAGGGCTTCA
 GATCTGACACAGGGACCCAGAACCCTTGACCCACAGGGTTCAGTACGCTCAGCCAACGCACCTCGCA
 GCTTGACCCTCCAGCCTTGACAGGCCCTCGACCTCGCCGAGCTCCTGGACGACCCCCATGAGGTGAA
 AAGTCGGGTCTGCTCAACATGACCAAGATTGCCAAGGGGGCGCAAGCTCAGGAAGAACTGGGGCCCGT
 CTTGGGTGGTGTAAACGGGTAACAGCCTGGTGTCTACCGAGAGCCACCGCCGACAGCCCTCCTCAGG
 CTGGGGACAGCGGGTAGCCGGCCGAAAGTAGCGTGGACCTGCGCGGGCGGCCCTGGCGCAGCGCCGC
 CACTGTCCAGCCGCGCAACGTCTGCACATCCGCACGATCCCTGGCCACGAGTTCCTGCTGCAGTCGG
 ACCACGAGACAGAGCTGCGAGCCTGGCACCCGCGCTGCGGACTGTATCGAGCGCTGGATCGGGAGAA
 CCCCCTGGAGCTGCGTCTGTGCGGCTCTGGACCCGCGGAGCTGAGCGCCGGGAGGACGAAGAAGAGGAG
 TCGGAGCTGGTGTCCAAGCCGCTGCTGCGCCTCAGCAGCCGCGGAGCTCCATTCGGGGGCCGAAGGCA
 CCGAGCAGAACC GCGTGCACAACAACTAAAGCGGCTCATCGGAAGAGACCGCCCTTACAAAGCCTGCA
 GGAGCGGGTCTGCTCCGAGACCAGGTGTTGCGCTGCCAGTTGGAATCACTCTGCCAGCGGAAGGAGAC
 ACGGTGCCAGCTTTTTGCGGCTCTGCATTGCTGCTGTGGATAAAAGAGGTCTAGATGTGGATGGCATT
 ATCGGGTGAGCGGAACCTGGCAGTGGTCCAGAAGCTTCGCTTTCTGGTGGACAGAGAGCGTGGGTCAC
 CTCGATGGGAGGTATGTGTTCCAGAACAGCCAGGACAAGAAGGTCGGTTAGATTTGGACAGTACTGAG
 TGGGATGACATTCATGTGGTACCCGAGCCTGAAGCTTTTTCTCCGGGAGCTGCCCCAGCCTCTGGTGC
 CACCCTGCTGCTGCCCATTTCCGTGCTGCCCTTGCACTCTCCGAATCAGAGCAGTGCCTCTCTCAGAT
 ACAAGAATTAATAGGCTCAATGCCAAAGCCCAACCATGACACTCTACGGTACCTCTGGAGCATTATGC
 AGGGTGATAGCACACTCAGATAAGAATCGCATGACACCCACAACCTGGGAATTGTGTTGGACCAACCC
 TGTTTCGGCCAGAGCAGGAGACATCTGACCCAGCAGCCATGCTCTCTACCCAGGCAGCTGGTCCAGCT
 GATGCTCACCAACTTCACCAGCCTTTCCCC

ACGCGTACGCGGCCGCTCGAGCAGAAACTCATCTCAGAAGAGGATCTGGCAGCAAATGATATCCTGGATT
 ACAAGGATGACGACGATAAGGTTTAA

Protein Sequence:

>RC222813 representing NM_001080156
 Red=Cloning site Green=Tags(s)

MSEPPVYCNLVDLRRCRSPPPGPACPLLQRLDAWEQHLDPNSGRFCFYINSLTGCKSWKPPRRSRSETNP
 GSMEGTQTLKRNDVLPQAKGFRSDTGTPEPLDPQGSLSLQRTSQLDPPALQAPRPLPQLDDPHEVE
 KSGLLNMTKIAQGGKRLRKNWGPSWVVLGNSLVFYREPPPTAPSSGWGPAGSRPESSVDLRGAALAHGR
 HLSRRNVLHIRTIPGHEFLQSDHETELRAWHRALRTVIERLDRENPLELRLSGSGPAEL SAGEDEEEE
 SELVSKPLLRLSSRRSSIRGPEGTEQNRVRNKLKRLIAKRPLQSLQERGLLRDQVFGCQLESQCQREGD
 TVPSFLRLCIAAVDKRGLDVGIYRVSGNLAVVQKLRFLVDRERAVTSDGRYVFPEQPGQEGRLDLSTE
 WDDIHVVTGALKLFLRELPOPLVPPLLLPHFRAALALSESEQLSQIQELIGSMPKPNHDTLRYLLEHLC
 RVIAHSDKNRMTPHNLGIVFGPTLFRPEQETSDPAAHALYPGQLVQLMLTNFTSLFP

TRTRPLEQKLISEEDLAANDILDYKDDDDKV

Chromatograms:

https://cdn.origene.com/chromatograms/jc1357_h04.zip

Restriction Sites:

SgfI-MluI

Cloning Scheme:


ACCN: NM_001080156

ORF Size: 1641 bp

OTI Disclaimer: The molecular sequence of this clone aligns with the gene accession number as a point of reference only. However, individual transcript sequences of the same gene can differ through naturally occurring variations (e.g. polymorphisms), each with its own valid existence. This clone is substantially in agreement with the reference, but a complete review of all prevailing variants is recommended prior to use. [More info](#)

OTI Annotation: This clone was engineered to express the complete ORF with an expression tag. Expression varies depending on the nature of the gene.

Components: The ORF clone is ion-exchange column purified and shipped in a 2D barcoded Matrix tube containing 10ug of transfection-ready, dried plasmid DNA (reconstitute with 100 ul of water).

- Reconstitution Method:**
1. Centrifuge at 5,000xg for 5min.
 2. Carefully open the tube and add 100ul of sterile water to dissolve the DNA.
 3. Close the tube and incubate for 10 minutes at room temperature.
 4. Briefly vortex the tube and then do a quick spin (less than 5000xg) to concentrate the liquid at the bottom.
 5. Store the suspended plasmid at -20°C. The DNA is stable for at least one year from date of shipping when stored at -20°C.

RefSeq: [NM_001080156.3](#)

RefSeq Size: 2102 bp

RefSeq ORF: 1644 bp

Locus ID: 64333

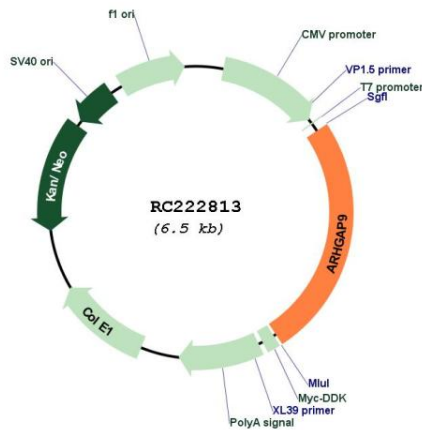
UniProt ID: [Q9BRR9](#)

Cytogenetics: 12q13.3

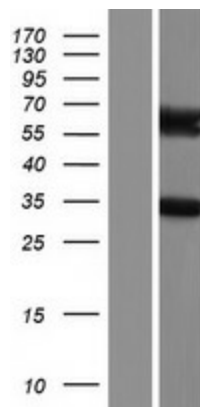
MW: 61 kDa

Gene Summary: This gene encodes a member of the Rho-GAP family of GTPase activating proteins. The protein has substantial GAP activity towards several Rho-family GTPases in vitro, converting them to an inactive GDP-bound state. It is implicated in regulating adhesion of hematopoietic cells to the extracellular matrix. Multiple transcript variants encoding different isoforms have been found for this gene. [provided by RefSeq, Jul 2008]

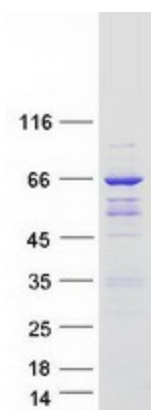
Product images:



Circular map for RC222813



Western blot validation of overexpression lysate (Cat# [LY421603]) using anti-DDK antibody (Cat# [TA50011-100]). Left: Cell lysates from untransfected HEK293T cells; Right: Cell lysates from HEK293T cells transfected with RC222813 using transfection reagent MegaTran 2.0 (Cat# [TT210002]).



Coomassie blue staining of purified ARHGAP9 protein (Cat# [TP322813]). The protein was produced from HEK293T cells transfected with ARHGAP9 cDNA clone (Cat# RC222813) using MegaTran 2.0 (Cat# [TT210002]).