

## Product datasheet for **RC222811**

### SEC13L1 (SEC13) (NM\_183352) Human Tagged ORF Clone

#### Product data:

Product Type:	Expression Plasmids
Product Name:	SEC13L1 (SEC13) (NM_183352) Human Tagged ORF Clone
Tag:	Myc-DDK
Symbol:	SEC13L1
Synonyms:	D3S1231E; npp-20; SEC13L1; SEC13R
Mammalian Cell Selection:	Neomycin
Vector:	pCMV6-Entry (PS100001)
E. coli Selection:	Kanamycin (25 ug/mL)
ORF Nucleotide Sequence:	>RC222811 ORF sequence Red=Cloning site Blue=ORF Green=Tags(s)

TTTTGTAATACGACTCACTATAGGGCGGCCGGAATTCGTCGACTGGATCCGGTACCGAGGAGATCTGCC  
GCC**CGGATCGCC**

ATGGTGTCAAGTAATTAACACTGTGGATACCTCCCATGAGGACATGATTCACGACGCCAGATGGACTACT  
ATGGCACCCGCTGGCAACCTGCTCATCAGACAGGTCGGTCAAAATCTTTGATGTGCGCAATGGAGGGCA  
GATCCTTATCGCCGACCTCAGGGGTCATGAGGGTCTGTGTGGCAAGTGGCTGGGCTCACCCCATGTAC  
GGCAACATCCTGGCATCGTGCTCCTATGACCGGAAAGTCATTATCTGGAGAGAGGAAAACGGCACCTGGG  
AGAAGAGCCACGAGCATGCGGGACAGACTCCTCAGTGAAGTGGTGTGCTGGGCCCCCATGACTACGG  
CCTGATCCTGGCCTGTGGGAGCTCGGATGGGGCCATCTCCTGCTGACTTACACCGGGGAAGGCCAATGG  
GAAGTAAAGAAGATCAACAACGCTCACACCATTGGCTGCAATGCCGTGAGCTGGGCCCTGCTGTTGTAC  
CTGGAAGCCTCATAGACCACCCATCGGGGCAGAAACCAATTACATCAAGAGGTTTGCATCAGGTGGCTG  
TGACAACCTCATCAAGCTGTGGAAGGAGGAGGAGGACGGCCAGTGAAGGAGGAGCAGAAGCTAGAAGCG  
CACAGTACTGGGTTGAGATGTGGCCTGGGCCCTCCATCGGCCTGCCACCAGCACCATCGCCAGCT  
GCTCCCAGGATGGTGTGTTTCATTTGGACCTGTGATGATGCCTCAAGCAATACGTGGTCCCCTAAATT  
GTTGCACAAGTTCAACGATGTGGTGTGGCATGTGAGCTGGTCCATCACAGCCAACATCCTGGCTGTCTCT  
GGTGGAGACAATAAGGTGACCCTGTGGAAGGAGTCAGTTGATGGGCAGTGGTGTGCATCAGTGTATGCA  
ACAAGGCCAGGGCTCCGTATCAGCATCAGTGACAGAGGGCCAGCAGAACGAGCAG

**ACGCGT**ACGCGGCCGCTCGAGCAGAAACTCATCTCAGAAGAGGATCTGGCAGCAATGATATCCTGGATT  
ACAAGGATGACGACGATAAGGTTTAA



[View online »](#)

**Protein Sequence:** >RC222811 protein sequence  
Red=Cloning site Green=Tags(s)

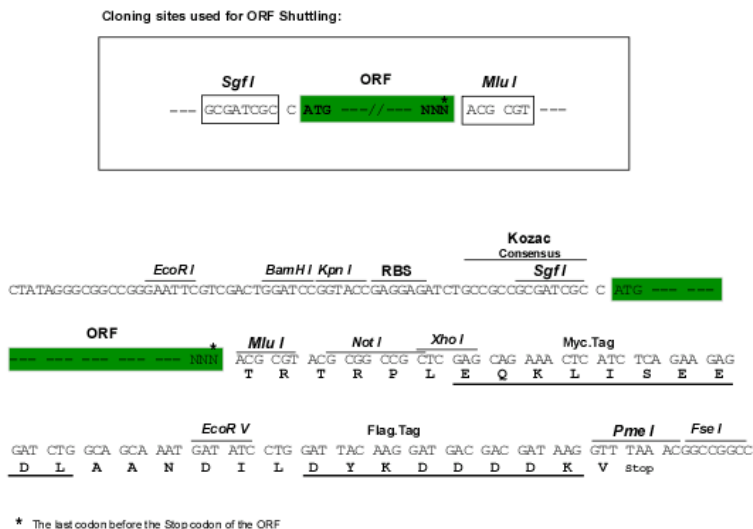
MVSVINTVDTSHEDMIHDAQMDYYGTRLATCSSDRSVKIFDVRNGGQIL IADLRGHEGPVWQVAWAHPMY  
 GNILASCSYDRKVI I WREENG TWEKSHEHAGHDSSVNSVCWAPHDYGL I LACGSSDGAISLLTYTGEGQW  
 EVKKINNAHTIGCNAVSWAPAVVPGSL IDHPSGQKPNYIKRFASGGCDNL I KLWKEEEDGQWKKEEQLEA  
 HSDWVRDVAWAPSIGLPTSTIASCSQDGRVFIWTCDDASSNTWSPKLLHKFNDDVWHVSWITANILAVS  
 GGDNKVTLWKESVDGQWVCISDYNKGQGSVSASVTEGQQNEQ

TRTRPLEQKLISEEDLAANDILDYKDDDDKV

**Chromatograms:** [https://cdn.origene.com/chromatograms/mk6453\\_e08.zip](https://cdn.origene.com/chromatograms/mk6453_e08.zip)

**Restriction Sites:** SgfI-MluI

**Cloning Scheme:**



**ACCN:** NM\_183352

**ORF Size:** 966 bp

**OTI Disclaimer:** The molecular sequence of this clone aligns with the gene accession number as a point of reference only. However, individual transcript sequences of the same gene can differ through naturally occurring variations (e.g. polymorphisms), each with its own valid existence. This clone is substantially in agreement with the reference, but a complete review of all prevailing variants is recommended prior to use. [More info](#)

**OTI Annotation:** This clone was engineered to express the complete ORF with an expression tag. Expression varies depending on the nature of the gene.

**Components:** The ORF clone is ion-exchange column purified and shipped in a 2D barcoded Matrix tube containing 10ug of transfection-ready, dried plasmid DNA (reconstitute with 100 ul of water).

**Reconstitution Method:**

1. Centrifuge at 5,000xg for 5min.
2. Carefully open the tube and add 100ul of sterile water to dissolve the DNA.
3. Close the tube and incubate for 10 minutes at room temperature.
4. Briefly vortex the tube and then do a quick spin (less than 5000xg) to concentrate the liquid at the bottom.
5. Store the suspended plasmid at -20°C. The DNA is stable for at least one year from date of shipping when stored at -20°C.

**RefSeq:** [NM\\_183352.3](#)

**RefSeq Size:** 1437 bp

**RefSeq ORF:** 969 bp

**Locus ID:** 6396

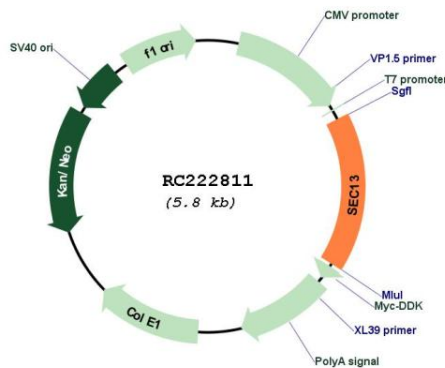
**UniProt ID:** [P55735](#)

**Cytogenetics:** 3p25.3

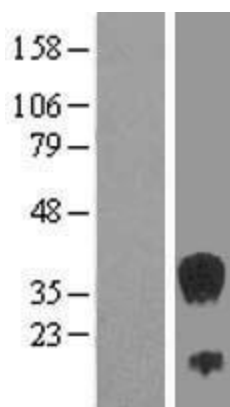
**MW:** 35.5 kDa

**Gene Summary:** The protein encoded by this gene belongs to the SEC13 family of WD-repeat proteins. It is a constituent of the endoplasmic reticulum and the nuclear pore complex. It has similarity to the yeast SEC13 protein, which is required for vesicle biogenesis from endoplasmic reticulum during the transport of proteins. Multiple alternatively spliced transcript variants have been found. [provided by RefSeq, Oct 2008]

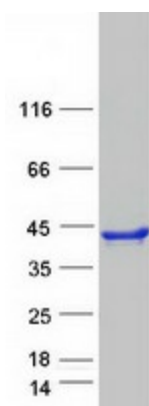
**Product images:**



Circular map for RC222811



Western blot validation of overexpression lysate (Cat# [LY405245]) using anti-DDK antibody (Cat# [TA50011-100]). Left: Cell lysates from untransfected HEK293T cells; Right: Cell lysates from HEK293T cells transfected with RC222811 using transfection reagent MegaTran 2.0 (Cat# [TT210002]).



Coomassie blue staining of purified SEC13 protein (Cat# [TP322811]). The protein was produced from HEK293T cells transfected with SEC13 cDNA clone (Cat# RC222811) using MegaTran 2.0 (Cat# [TT210002]).