

Product datasheet for RC222807

MEIS2 (NM_170677) Human Tagged ORF Clone

Product data:

Product Type: Expression Plasmids
Product Name: MEIS2 (NM_170677) Human Tagged ORF Clone
Tag: Myc-DDK
Symbol: MEIS2
Synonyms: CPCMR; HsT18361; MRG1
Mammalian Cell Selection: Neomycin
Vector: pCMV6-Entry (PS100001)
E. coli Selection: Kanamycin (25 ug/mL)
ORF Nucleotide Sequence: >RC222807 representing NM_170677
 Red=Cloning site Blue=ORF Green=Tags(s)

TTTTGTAATACGACTCACTATAGGGCGGCCGGAATTCGTCGACTGGATCCGGTACCGAGGAGATCTGCC
 GCC**CGATCGCC**

ATGGCGCAAAGGTACGATGAGCTGCCCATACGGCGGGATGGACGGAGTAGGGGTTCCCGCTTCCATGT
 ACGGAGACCTCACGCGCCGCGCCGATCCCCCGTTACCACCTGAACCACGGGCCCGCTCCACGC
 CACACAGCACTACGGCGCGCACGCCCGCACCCCAATGTCATGCCGGCCAGTATGGGATCCGCTGTCAAC
 GACGCCTGAAGCGGGACAAGGACGCGATCTATGGCACCCGTTGTTCCCTCTGTTAGCTCTGGTCTTTG
 AGAAGTGGGAGCTGGCGACCTGCACTCCCCGGAACTGGAGTGGCTGGCGGAGACGTCTGCTCCTCCGA
 CTCTTCAACGAGGACATCGCGGTCTTCGCCAAGCAGGTTTCGCGCGAAAAGCCACTTTTTCTCAAAAT
 CCAGAGCTGGACAATTTGATGATACAAGCAATACAAGTACTAAGGTTTCATCTTTTGAGTTAGAAAAGG
 TCCACGAACTGTGCGATAACTTCTGCCACCGATACATTAGCTGTTTGAAGGGGAAAATGCCCATCGACCT
 CGTCATTGATGAAAGAGACGGCAGCTCCAAGTCAGATCATGAAGAATTTTCAGGCTCCTCCACAAATCTC
 GCTGACCATAACCCTTCTTGGCGAGACCAGATGATGCAACCTCAACCCACTCAGCAGGCACCCAG
 GGCCCTCCAGTGGGGCCATGCTTCCAGAGCGGAGACAACAGCAGTGAAGGAGGATGGTTTAGACAA
 CAGTGTAGCTTACCTGGTACAGGTGACGATGATGATCCGGATAAGGACAAAAACGCCAGAAGAAAAGA
 GGCAATTTCCCAAAGTAGCAACAAATATCATGAGAGCATGGCTTCCAGCATCTCACACATCCGTACC
 CTCCGAAGAGCAGAAGAACAGTTAGCGCAAGACACAGGACTTACAATTCTCCAAGTAAACAACCTGGTT
 TATTAATGCCAGAAGAAGATAGTACAGCCATGATTGACCAGTCAAATCGAGCAGGTTTTCTTCTTGAT
 CCTTCAGTGAGCCAAGGAGCAGCATATAGTCCAGAGGGTCAGCCCATGGGGAGCTTTGTGTTGGATGGTC
 AGCAACACATGGGGATCCGGCTGCAGGACCTATGAGTGGAAATGGGCATGAATATGGGCATGGATGGGCA
 ATGGCACTACATG

ACGCGTACGCGGCCGCTCGAGCAGAACTCATCTCAGAAGAGGATCTGGCAGCAAATGATATCCTGGATT
 ACAAGGATGACGACGATAAGGTTTAA



Protein Sequence: >RC222807 representing NM_170677
Red=Cloning site Green=Tags(s)

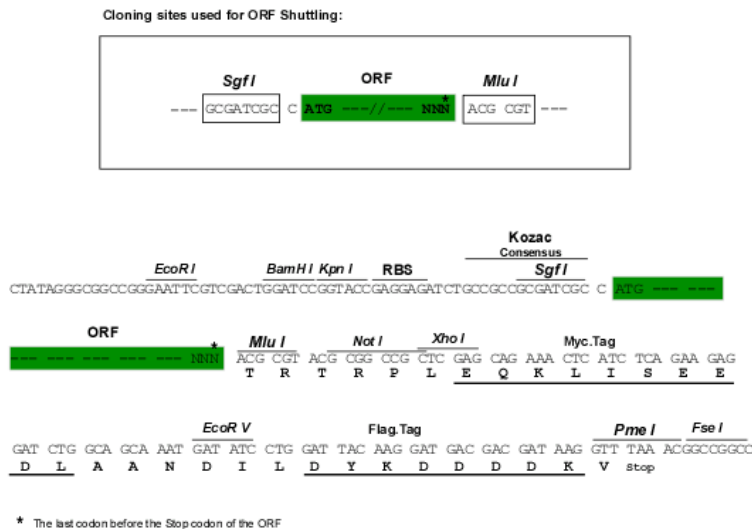
MAQRYDELPHYGGMDGVGPASMYGDPHAPRPIPPVHHLNHGPPPLHATQHYGAHAPHNPVMPASMGSAVN
 DALKRDKDAIYGHPLFPLLALVFEKCELATCTPREPGVAGGDVCSDFSFNEDIAVFAKQVRAEKPLFSSN
 PELDNLMIQAIQVLRFHLLLELEKVHELCDNFCHRYISCLKGKMPIDLVIDERDGSKSDHEELSGSSTNL
 ADHNPSWRDHDATSTHSAGTPGPSSGGHASQSGDNSSEQGDGLDNSVASPGTGDDDDPKDKKRQKKR
 GIFPKVATNIMRAWLFQHLTHPYPSEEQKQLAQTGLTILQVNNWFINARRRIVQPMIDQSNRAGFLLD
 PSVSQGAAYSPEGQPMGSFVLGDGQHMGIIRPAGPMSGMNMGMMDGQWHYM

TRTRPLEQKLISEEDLAANDILDYKDDDDKV

Chromatograms: https://cdn.origene.com/chromatograms/mg2686_f12.zip

Restriction Sites: SgfI-MluI

Cloning Scheme:



ACCN: NM_170677

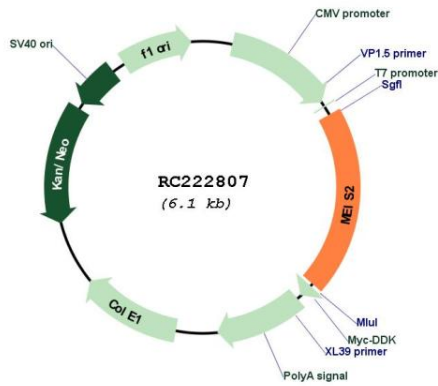
ORF Size: 1203 bp

OTI Disclaimer: Due to the inherent nature of this plasmid, standard methods to replicate additional amounts of DNA in E. coli are highly likely to result in mutations and/or rearrangements. Therefore, OriGene does not guarantee the capability to replicate this plasmid DNA. Additional amounts of DNA can be purchased from OriGene with batch-specific, full-sequence verification at a reduced cost. Please contact our customer care team at custsupport@origene.com or by calling 301.340.3188 option 3 for pricing and delivery.

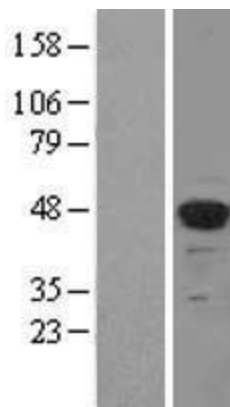
The molecular sequence of this clone aligns with the gene accession number as a point of reference only. However, individual transcript sequences of the same gene can differ through naturally occurring variations (e.g. polymorphisms), each with its own valid existence. This clone is substantially in agreement with the reference, but a complete review of all prevailing variants is recommended prior to use. [More info](#)

OTI Annotation:	This clone was engineered to express the complete ORF with an expression tag. Expression varies depending on the nature of the gene.
Components:	The ORF clone is ion-exchange column purified and shipped in a 2D barcoded Matrix tube containing 10ug of transfection-ready, dried plasmid DNA (reconstitute with 100 ul of water).
Reconstitution Method:	<ol style="list-style-type: none">1. Centrifuge at 5,000xg for 5min.2. Carefully open the tube and add 100ul of sterile water to dissolve the DNA.3. Close the tube and incubate for 10 minutes at room temperature.4. Briefly vortex the tube and then do a quick spin (less than 5000xg) to concentrate the liquid at the bottom.5. Store the suspended plasmid at -20°C. The DNA is stable for at least one year from date of shipping when stored at -20°C.
RefSeq:	NM_170677.5
RefSeq Size:	3721 bp
RefSeq ORF:	1206 bp
Locus ID:	4212
UniProt ID:	O14770
Cytogenetics:	15q14
Protein Families:	Transcription Factors
MW:	43.6 kDa
Gene Summary:	This gene encodes a homeobox protein belonging to the TALE ('three amino acid loop extension') family of homeodomain-containing proteins. TALE homeobox proteins are highly conserved transcription regulators, and several members have been shown to be essential contributors to developmental programs. Multiple transcript variants encoding distinct isoforms have been described for this gene. [provided by RefSeq, Jul 2008]

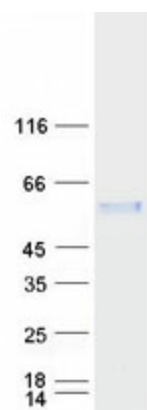
Product images:



Circular map for RC222807



Western blot validation of overexpression lysate (Cat# [LY406905]) using anti-DDK antibody (Cat# [TA50011-100]). Left: Cell lysates from untransfected HEK293T cells; Right: Cell lysates from HEK293T cells transfected with RC222807 using transfection reagent MegaTran 2.0 (Cat# [TT210002]).



Coomassie blue staining of purified MEIS2 protein (Cat# [TP322807]). The protein was produced from HEK293T cells transfected with MEIS2 cDNA clone (Cat# RC222807) using MegaTran 2.0 (Cat# [TT210002]).