

Product datasheet for **RC222797**

SGK196 (POMK) (NM_032237) Human Tagged ORF Clone

Product data:

Product Type:	Expression Plasmids
Product Name:	SGK196 (POMK) (NM_032237) Human Tagged ORF Clone
Tag:	Myc-DDK
Symbol:	SGK196
Synonyms:	MDDGA12; MDDGC12; SGK196
Mammalian Cell Selection:	Neomycin
Vector:	pCMV6-Entry (PS100001)
E. coli Selection:	Kanamycin (25 ug/mL)
ORF Nucleotide Sequence:	>RC222797 ORF sequence Red=Cloning site Blue=ORF Green=Tags(s)

TTTTGTAATACGACTCACTATAGGGCGGCCGGAATTCGTCGACTGGATCCGGTACCGAGGAGATCTGCC
GCC**CGATCGC**C

ATGAAAAGCAGCCCCAGAACAGCAGGAGAGGCCCTCGCCCCGAGAGGTGCCGCCAGCTGTTGGGCTGC
TGCTGATCATGGCCCTGATGAATACTCTGCTCTACCTCTGCCTCGACCACTTCTTCATCGCTCCTCGACA
ATCCACTGTGGACCCACACACTGTCCCTATGGTCACTTCAGGATAGGACAGATGAAAACTGCTCACCT
TGGCTGCTCCTGCGAGGAGCTGAGAACAGAAGTGAGACAGCTGAAGCGTGTGGGAAGGAGCTGTAAGA
GAGTCTTTCTGTCTGAGTGAAGGAGCACAAAGTTGCACTCTCACAGCTACCAGCCTGGAGATGAAAGA
TGATTTCCATCCATGGACTGCAGATGCTGAAATCTCTCAAGGCACACATGTTGTCACGCTGCTTGGCTAT
TGTGAGGATGACAACACTATGCTTACTGAATATCACCCCTTAGGTTCTTGAGTAACCTGGAAGAAACAC
TAAACCTTTCAAAGTACCAAAATGTGAACACGTGGCAGCACAGGCTGGAGCTGGCCATGGACTATGTCAG
CATCATAATTACCTGCACCACAGCCCTGTGGGCACACGGGTCATGTGCGACTCCAACGACTGCCGAAG
ACACTGTCCCAGTATCTGCTAACAAGCAACTTCAGCATTTGGCAATGACTTGGACGCCTTACCCTGG
TGAACCACAGTCCGGGATGCTGGTGAAGTGCGGCCACAGGGAGCTGCATGGGGATTTCTGGCTCCAGA
GCAACTGTGGCCCTATGGAGAGGACGTGCCTTTCCACGATGATCTCATGCCCTCATATGATGAGAAGATT
GACATTTGGAAGATCCCAGACATCTCCAGTTTCTTCTGGGGCACATTGAAGGGAGTGATATGTTCCGAT
TCCATTTGTTGATATTACAAAAGCATGCAAGAGCCAGACTCCCTCAGAAAGACCCACTGCCAGGACGT
TCTGGAGACCTACCAGAAGGCTTGGATACACTTAGAGATGCCATGATGTCTCAGGCAAGAGAGATGCTG

ACGCGTACGCGGCCGCTCGAGCAGAAACTCATCTCAGAAGAGGATCTGGCAGCAATGATATCCTGGATT
ACAAGGATGACGACGATAAGGTTTAA



[View online »](#)

Reconstitution Method:

1. Centrifuge at 5,000xg for 5min.
2. Carefully open the tube and add 100ul of sterile water to dissolve the DNA.
3. Close the tube and incubate for 10 minutes at room temperature.
4. Briefly vortex the tube and then do a quick spin (less than 5000xg) to concentrate the liquid at the bottom.
5. Store the suspended plasmid at -20°C. The DNA is stable for at least one year from date of shipping when stored at -20°C.

RefSeq: [NM_032237.5](#)

RefSeq Size: 1623 bp

RefSeq ORF: 1053 bp

Locus ID: 84197

UniProt ID: [Q9H5K3](#)

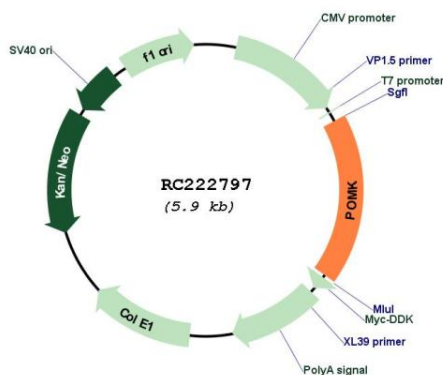
Cytogenetics: 8p11.21

Protein Families: Druggable Genome, Protein Kinase, Transmembrane

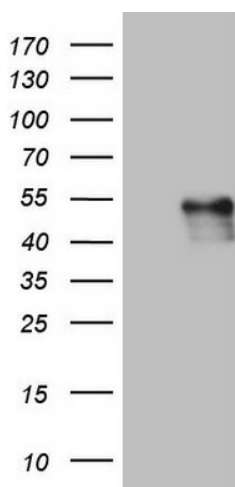
MW: 40 kDa

Gene Summary: This gene encodes a protein that may be involved in the presentation of the laminin-binding O-linked carbohydrate chain of alpha-dystroglycan (a-DG), which forms transmembrane linkages between the extracellular matrix and the exoskeleton. Some pathogens use this O-linked carbohydrate unit for host entry. Loss of function compound heterozygous mutations in this gene were found in a human patient affected by the Walker-Warburg syndrome (WWS) phenotype. Mice lacking this gene contain misplaced neurons (heterotopia) in some regions of the brain, possibly from defects in neuronal migration. Alternative splicing of this gene results in multiple transcript variants. [provided by RefSeq, May 2013]

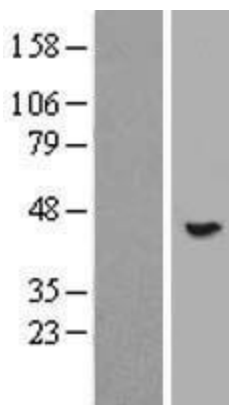
Product images:



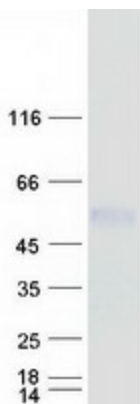
Circular map for RC222797



HEK293T cells were transfected with the pCMV6-ENTRY control (Cat# [PS100001], Left lane) or pCMV6-ENTRY SGK196 (Cat# RC222797, Right lane) cDNA for 48 hrs and lysed. Equivalent amounts of cell lysates (5 ug per lane) were separated by SDS-PAGE and immunoblotted with anti-SGK196(Cat# [TA804649]). Positive lysates [LY410261] (100ug) and [LC410261] (20ug) can be purchased separately from OriGene.



Western blot validation of overexpression lysate (Cat# [LY410261]) using anti-DDK antibody (Cat# [TA50011-100]). Left: Cell lysates from untransfected HEK293T cells; Right: Cell lysates from HEK293T cells transfected with RC222797 using transfection reagent MegaTran 2.0 (Cat# [TT210002]).



Coomassie blue staining of purified POMK protein (Cat# [TP322797]). The protein was produced from HEK293T cells transfected with POMK cDNA clone (Cat# RC222797) using MegaTran 2.0 (Cat# [TT210002]).