

Product datasheet for **RC222790**

CBWD1 (NM_018491) Human Tagged ORF Clone

Product data:

Product Type:	Expression Plasmids
Product Name:	CBWD1 (NM_018491) Human Tagged ORF Clone
Tag:	Myc-DDK
Symbol:	CBWD1
Synonyms:	COBP
Mammalian Cell Selection:	Neomycin
Vector:	pCMV6-Entry (PS100001)
E. coli Selection:	Kanamycin (25 ug/mL)
ORF Nucleotide Sequence:	>RC222790 representing NM_018491 Red=Cloning site Blue=ORF Green=Tags(s)

TTTTGTAATACGACTCACTATAGGGCGGCCGGAATTCGTCGACTGGATCCGGTACCGAGGAGATCTGCC
GCC**CGGATCGCC**

ATGTTACCGGCTGTTGGATCTGCGGATGAGGAGGAGGATCCTGCGGAGGAGGATTGCTCCTGAATTGGTTC
CCATTGAGACGACGCAAAGCGAGGAGGAGGAAAAGTCTGGCCTCGGCGCCAAGATCCCAGTCACAATTAT
CACCGGGTATTTAGGTGCTGGGAAGACAACACTTCTGAACTATATTTTGACAGAGCAACATAGTAAAAGA
GTAGCGGTCAATTTAAATGAATTTGGGAAGGAAGTGCCTGGAGAAATCCTTAGCTGTCAGCCAAGGTG
GAGAGCTCTATGAAGAGTGGCTGGAACCTAGAAACGGTTGCCTCTGCTGTTCAAGGACAGTGGCCT
TAGAGCTATTGAGAAATTTGATGCAAAAAGAGGGGAAATTTGATTACATACTGTTAGAGACCACTGGATTA
GCAGACCTGGTGCAGTGGCTTCTATGTTTTGGTTGATGCTGAATTAGGAGTGATATTTATCTTGATG
GTATCATAACTATTGTGGATTCAAATATGGATTAACAGAAAGAAACCTGATGGCCTTAT
CAATGAAGCTACTAGGCAAGTTGCTTTGGCAGATGCCATTCTCATAATAAAACAGACCTGGTCCAGAA
GAAGATGTAAAGAAATTAAGAACGACAATTAGATCCATAAATGGACTAGGACAAATCTTAGAAACACAAA
GATCAAGAGTTGATCTCTAATGTATTAGATCTTCATGCCTTTGATAGTCTCTCTGGAATAAGTTTGCA
GAAAAAATTCAGCATGTGCCAGGAACAACCTCACCTTGATCAGAGTATTGTTACAATCACATTTGAA
GTACCAGGAAATGCAAAGGAAGAATCTTAATATGTTTATTGAGAAATCCTGTTGGGAAAAGAATGTGA
GAAACAAGGACAATCACTGCATGGAGGTGATAAGGCTGAAGGGATTGGTGTCAATCAAAGACAAATCACA
ACAAGTATTGTCCAGGGTGTCCATGAGCTCTATGATCTGGAGGAGACTCCAGTGAGCTGGAAGGATGAC
ACTGAGAGAACAAATCGATTGGTCTCCTTGGCAGAAATTTAGATAAGGATATCCTTAAACAGCTGTTTA
TAGCTACTGTGACAGAAACAGAAAAGCAGTGGACAACACGTTTCCAAGAAGATCAAGTTGTACA

ACGCGTACGCGGCCGCTCGAGCAGAAACTCATCTCAGAAGAGGATCTGGCAGCAATGATATCCTGGATT
ACAAGGATGACGACGATAAGGTTTAA



[View online »](#)

Protein Sequence: >RC222790 representing NM_018491
Red=Cloning site Green=Tags(s)

MLPAVGSADDEEDPAEDCELVPIETTQSEEEKSGLGAKIPVTIITGYLGAGKTTLLNYILTEQHSKR
 VAVILNEFGESALEKSLAVSQGGELYEEWLELRNGLCCSVKDSGLRAIENLMQKKGFDYILLETTGL
 ADPGAVASMFVYDAELGSDIYLDGIITIVDSKYGLKHLTEKPDGLINEATRQVALADAILINKTDLVPE
 EDVKKLRTTIRSNGLGQILETQRSVDLSNVLDLHAFDSLSGISLQKKLQHVPGTQPHLDQSIIVITFE
 VPGNAKEEHLNMFIQNLLWEKNVRNKDNHCMEVIRLKGLVSIKDKSQQVIYQGVHELVDLEETPVSWKDD
 TERTNRLVLLGRNLDKDKILKQLFIATVTETEKQWTRFQEDQVCT

TRTRPLEQKLISEEDLAANDILDYKDDDDKV

Chromatograms: https://cdn.origene.com/chromatograms/mk6043_f01.zip

Restriction Sites: SgfI-MluI

Cloning Scheme:



* The last codon before the Stop codon of the ORF

ACCN: NM_018491

ORF Size: 1185 bp

OTI Disclaimer: The molecular sequence of this clone aligns with the gene accession number as a point of reference only. However, individual transcript sequences of the same gene can differ through naturally occurring variations (e.g. polymorphisms), each with its own valid existence. This clone is substantially in agreement with the reference, but a complete review of all prevailing variants is recommended prior to use. [More info](#)

OTI Annotation: This clone was engineered to express the complete ORF with an expression tag. Expression varies depending on the nature of the gene.

Components: The ORF clone is ion-exchange column purified and shipped in a 2D barcoded Matrix tube containing 10ug of transfection-ready, dried plasmid DNA (reconstitute with 100 ul of water).

Reconstitution Method:

1. Centrifuge at 5,000xg for 5min.
2. Carefully open the tube and add 100ul of sterile water to dissolve the DNA.
3. Close the tube and incubate for 10 minutes at room temperature.
4. Briefly vortex the tube and then do a quick spin (less than 5000xg) to concentrate the liquid at the bottom.
5. Store the suspended plasmid at -20°C. The DNA is stable for at least one year from date of shipping when stored at -20°C.

RefSeq: [NM_018491.5](#)

RefSeq Size: 1680 bp

RefSeq ORF: 1188 bp

Locus ID: 55871

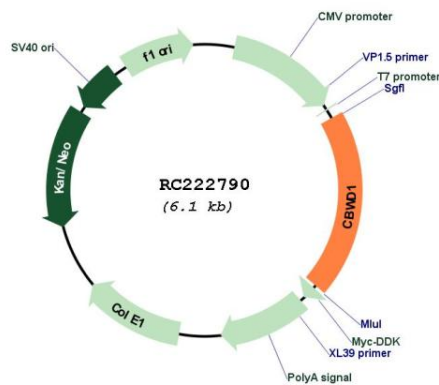
UniProt ID: [Q9BRT8](#)

Cytogenetics: 9p24.3

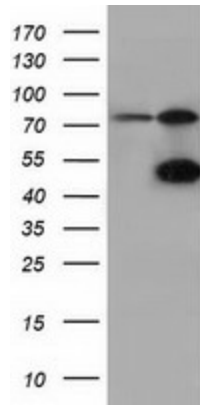
Domains: cobW

MW: 43.9 kDa

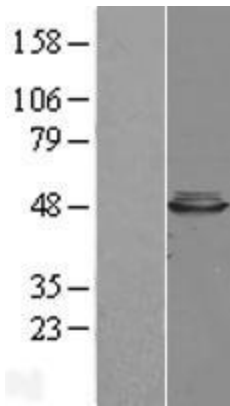
Product images:



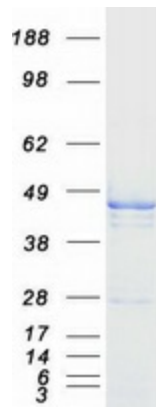
Circular map for RC222790



HEK293T cells were transfected with the pCMV6-ENTRY control (Cat# [PS100001], Left lane) or pCMV6-ENTRY CBWD1 (Cat# RC222790, Right lane) cDNA for 48 hrs and lysed. Equivalent amounts of cell lysates (5 ug per lane) were separated by SDS-PAGE and immunoblotted with anti-CBWD1 (Cat# [TA501612]). Positive lysates [LY402692] (100ug) and [LC402692] (20ug) can be purchased separately from OriGene.



Western blot validation of overexpression lysate (Cat# [LY402692]) using anti-DDK antibody (Cat# [TA50011-100]). Left: Cell lysates from untransfected HEK293T cells; Right: Cell lysates from HEK293T cells transfected with RC222790 using transfection reagent MegaTran 2.0 (Cat# [TT210002]).



Coomassie blue staining of purified CBWD1 protein (Cat# [TP322790]). The protein was produced from HEK293T cells transfected with CBWD1 cDNA clone (Cat# RC222790) using MegaTran 2.0 (Cat# [TT210002]).