

## Product datasheet for **RC222783**

### **MPIG6B (NM\_138277) Human Tagged ORF Clone**

#### Product data:

Product Type:	Expression Plasmids
Product Name:	MPIG6B (NM_138277) Human Tagged ORF Clone
Tag:	Myc-DDK
Symbol:	MPIG6B
Synonyms:	C6orf25; G6b; G6b-B; NG31; THAMY
Mammalian Cell Selection:	Neomycin
Vector:	pCMV6-Entry (PS100001)
E. coli Selection:	Kanamycin (25 ug/mL)
ORF Nucleotide Sequence:	>RC222783 ORF sequence Red=Cloning site Blue=ORF Green=Tags(s)

TTTTGTAATACGACTCACTATAGGGCGCCGGAATTCGTCGACTGGATCCGGTACCGAGGAGATCTGCC  
GCC**CGATCGCC**

ATGGCTGTGTTTCTGCAGCTGCTACCGCTGCTGCTCTCGAGGGCCCAAGGGAACCCTGGGGCTTCTCTGG  
ACGGCCGCCCTGGGGACCGGGTGAATCTCTCCTGCGGAGGAGTCTCTCATCCCATCCGCTGGGTCTGGGC  
ACCCAGCTTCCCGCCTGCAAGGGCCTGCCAAAGGACGCCGACCGATCCTGTGGCCTCTTCGAGCGGG  
ACCCCCACCGTGCCTCCCTCCAGCCTTTCGTGCGCCGCTACGCTCCCTGGACTCTGGTATCCGGCGGC  
TGGAGCTCCTCTTGAAGCGGGGGACTCGGCCTTTTTTCTGCAAGGGCCGCCACGAGGACGAGAGCCG  
TACAGTGCTTACGTGCTGGGGACAGGACCTATTGCAAGGCCCCCGGGCTACCCATGGGTCCGTGTAT  
CCCCAGCTCCTGATCCCGCTGCTGGGCGCTGGGTTGGTGCTCGGACTGGGAGCTTTGGGCCTGGTCTGGT  
GGCTGCACAGGCGCTGCCCCGCAACCGATTGACCACTCCCTAGATTTGCTCTGTCCCCCCACATAG  
CTCCACTTGTGAAAACCGAGCCCCAGAGGCCAGTAAAGGAGGAAGAGCCCAAGATTCCAGGGGACCTGGA  
CCAGGAACCGGTAAGGGCATGGGATGGGAAGGGGA

**ACGCGT**ACGCGGGCCGCTCGAGCAGAACTCATCTCAGAAGAGGATCTGGCAGCAAATGATATCCTGGATT  
ACAAGGATGACGACGATAAGGTTTAA



[View online »](#)

**Protein Sequence:** >RC222783 protein sequence  
 Red=Cloning site Green=Tags(s)

MAVFLQLPLLLSRAQGNPGASLDGRPGDRVNLSCGGVSHPIRWVWAPSFACKGLSKGRRPILWASSSG  
 TPTVPPLQPFVGRRLSLDSGIRRELELLSAGDSGTFCKGRHEDESRTLHVLGDRTYCKAPGPTHGSVY  
 PQLLIPLLGAGLVGLGALGLVWWLHRRLLPPQPIRPLPRFALSPHSSTCENRAPEASKGGRAQDSRGP  
 PGTGKGMGMGRG

TRTRPLEQKLISEEDLAANDILDYKDDDDKV

**Chromatograms:** [https://cdn.origene.com/chromatograms/mk6462\\_a07.zip](https://cdn.origene.com/chromatograms/mk6462_a07.zip)

**Restriction Sites:** SgfI-MluI

**Cloning Scheme:**

Cloning sites used for ORF Shuttling:



\* The last codon before the Stop codon of the ORF

**ACCN:** NM\_138277

**ORF Size:** 666 bp

**OTI Disclaimer:** The molecular sequence of this clone aligns with the gene accession number as a point of reference only. However, individual transcript sequences of the same gene can differ through naturally occurring variations (e.g. polymorphisms), each with its own valid existence. This clone is substantially in agreement with the reference, but a complete review of all prevailing variants is recommended prior to use. [More info](#)

**OTI Annotation:** This clone was engineered to express the complete ORF with an expression tag. Expression varies depending on the nature of the gene.

**Components:** The ORF clone is ion-exchange column purified and shipped in a 2D barcoded Matrix tube containing 10ug of transfection-ready, dried plasmid DNA (reconstitute with 100 ul of water).

**Reconstitution Method:**

1. Centrifuge at 5,000xg for 5min.
2. Carefully open the tube and add 100ul of sterile water to dissolve the DNA.
3. Close the tube and incubate for 10 minutes at room temperature.
4. Briefly vortex the tube and then do a quick spin (less than 5000xg) to concentrate the liquid at the bottom.
5. Store the suspended plasmid at -20°C. The DNA is stable for at least one year from date of shipping when stored at -20°C.

**RefSeq:** [NM\\_138277.2](#), [NP\\_612121.1](#)

**RefSeq Size:** 2560 bp

**RefSeq ORF:** 669 bp

**Locus ID:** 80739

**UniProt ID:** [O95866](#)

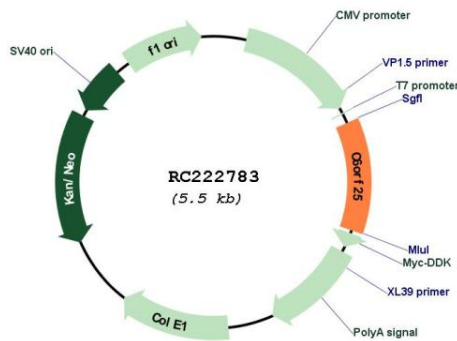
**Cytogenetics:** 6p21.33

**Protein Families:** Druggable Genome, Transmembrane

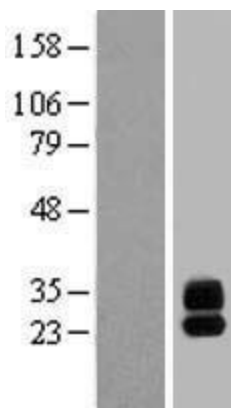
**MW:** 23.6 kDa

**Gene Summary:** This gene is a member of the immunoglobulin (Ig) superfamily and is located in the major histocompatibility complex (MHC) class III region. The protein encoded by this gene is a glycosylated, plasma membrane-bound cell surface receptor, but soluble isoforms encoded by some transcript variants have been found in the endoplasmic reticulum and Golgi before being secreted. Multiple transcript variants encoding different isoforms have been found for this gene. [provided by RefSeq, Jul 2008]

### Product images:



Circular map for RC222783



Western blot validation of overexpression lysate (Cat# [LY408737]) using anti-DDK antibody (Cat# [TA50011-100]). Left: Cell lysates from untransfected HEK293T cells; Right: Cell lysates from HEK293T cells transfected with RC222783 using transfection reagent MegaTran 2.0 (Cat# [TT210002]).