

## Product datasheet for **RC222779**

### WDR21B (DCAF4L1) (NM\_001029955) Human Tagged ORF Clone

#### Product data:

Product Type:	Expression Plasmids
Product Name:	WDR21B (DCAF4L1) (NM_001029955) Human Tagged ORF Clone
Tag:	Myc-DDK
Symbol:	WDR21B
Synonyms:	WDR21B
Mammalian Cell Selection:	Neomycin
Vector:	pCMV6-Entry (PS100001)
E. coli Selection:	Kanamycin (25 ug/mL)
ORF Nucleotide Sequence:	>RC222779 representing NM_001029955 Red=Cloning site Blue=ORF Green=Tags(s)

TTTTGTAATACGACTCACTATAGGGCGGCCGGAATTCGTCGACTGGATCCGGTACCGAGGAGATCTGCC  
GCC**CGGATCGCC**

ATGGAGGCTGAAAGGCTGCGACTCCTCGAGGAAGAGGCCAAGCTGAAAAAGGTAGCCAGAATGGGATTTA  
ATGCATCTTCCATGCTCCGAAAAAGCCAGCTAGGTTTCTCAACGTCACCAAGTACTCCCGTTTAGCCAA  
CGAGCTGCGTGTGAGCTGCATGGAGCGGAAAAAGGTCAAATTCGGAGCTTGGATCCCTCCTCTTTGGCG  
AGCGACCGATTTAACTTCATTCTGGCGAGTACCAACAGCGACCAGCTCTTCGTAGTGAACCAAGTGAAG  
TCGAAGGCTCCAAGTACGGCATCATCAGCCTGCGAACTCTGAAGATCCCTTCGTTCCACGTGTACGTGCT  
CAGAAACCTCTACGTCCCAACCGGAAGGTGAAGTCCCTGTGCTGGCCTCGCTGAACCAAGTGGACTCT  
CACGTTCTGCTGTGCTTCGAGGGAATCACAGATGCTCCAAGCTGTGCAAGTGTGCTGCCAGCGTCCGGT  
TCTTAAGTGTTACACAAGAGTTAACCAAGCCTGGCATGCTCTGCAGTTTCCAGATCCCAGAGGCCTGGTC  
CTGTGCGTGGTCCCTCAACACCCGGGCATATCACTGCTTTAGTGCAGGCTTGTCTCAGCAGGTCCTGTTG  
ACCAGCGTGGCGACGGGACACCAGCAGTCAATTTGATACCAGCAGTGATGTCTGGCCAGCAGTTTGCTA  
GTACGGCTCCTTTGCTGTTTAAATGGCTGTCGCTCCGGGGAGATCTTTGCCATTGATCTGCGTTGTAGAAA  
TCGAGGCAAGGGTGGAGGGCCACTCGCCTGTTCCATGACTCAGCAGTGAACCTCTGTGCAATCCCTCAA  
GAAGCAATGCCTGATGGCATCAGACATGACTGGAAAGATCAAGCTGTGGGATCTGAGGGCCACTAAAT  
GTGTAAGGCAGTACGAAGGTACAGTGAATGAGTCCGCTATCTGCCCTGCATGTGCACGAGGAAGAGGG  
AATCGTGGTGGCAGTGGGCCAGGACTGCTACACGAGAATCTGGAGCCTCCATGATGCCACCTGCTCAGA  
ACCATCCCTTCCCGTACTCTGCCTCCGAGGACGACATCCAGCGTGGCCTTCGCTTCTCGGCTCGGGG  
GCATCCGGGGAGCAGCACCAAGGGCTGCTCATGGCTGTCCGGCAGGACCTTTATTGTTTCCCTTCAGC

**ACGCGT**ACGCGGCCGCTCGAGCAGAACTCATCTCAGAAGAGGATCTGGCAGCAATGATATCCTGGATT  
ACAAGGATGACGACGATAAGGTTTAA



[View online »](#)

**Protein Sequence:** >RC222779 representing NM\_001029955  
Red=Cloning site Green=Tags(s)

MEAERLRLLEEEAKLKKVARMGFNASSMLRKSQLGFLNVTSYSRLANELRVSCMERKKVQIRSLDPSSLA  
SDRFNFILASTNSDQLFVYNQVEVEGSKYGIISLRTLKIPSFHVYVLRNLYVPNRKKVSLCWAASLNQLDS  
HVLLCFEGITDAPSCAVLLPASRFLSVHTRVNQPGMLCSFQIPEAWSCAWSLNTRAYHCF SAGLSQQVLL  
TSVATGHQQSFDTSDDVLAQQFASTAPLLFNGCRSGEIFAIDLRCRNRGKGWRATRLFHDSAVTSVQILQ  
EEQCLMASDMTGKIKLWDLRATKCVRQYEGHVNESAYLPLHVHEEEGIVVAVGQDCYTRIWSLHDAHLLR  
TIPSPYASEDDIPSVAFASRLGGIRGAAPGLLMAVRQDLYCFPFS

TRTRPLEQKLISEEDLAANDILDYKDDDDKV

**Chromatograms:** [https://cdn.origene.com/chromatograms/mk8043\\_b08.zip](https://cdn.origene.com/chromatograms/mk8043_b08.zip)

**Restriction Sites:** SgfI-MluI

**Cloning Scheme:**



**ACCN:** NM\_001029955

**ORF Size:** 1188 bp

**OTI Disclaimer:** The molecular sequence of this clone aligns with the gene accession number as a point of reference only. However, individual transcript sequences of the same gene can differ through naturally occurring variations (e.g. polymorphisms), each with its own valid existence. This clone is substantially in agreement with the reference, but a complete review of all prevailing variants is recommended prior to use. [More info](#)

**OTI Annotation:** This clone was engineered to express the complete ORF with an expression tag. Expression varies depending on the nature of the gene.

**Components:** The ORF clone is ion-exchange column purified and shipped in a 2D barcoded Matrix tube containing 10ug of transfection-ready, dried plasmid DNA (reconstitute with 100 ul of water).

- Reconstitution Method:**
1. Centrifuge at 5,000xg for 5min.
  2. Carefully open the tube and add 100ul of sterile water to dissolve the DNA.
  3. Close the tube and incubate for 10 minutes at room temperature.
  4. Briefly vortex the tube and then do a quick spin (less than 5000xg) to concentrate the liquid at the bottom.
  5. Store the suspended plasmid at -20°C. The DNA is stable for at least one year from date of shipping when stored at -20°C.

**RefSeq:** [NM\\_001029955.4](#)

**RefSeq Size:** 4731 bp

**RefSeq ORF:** 1191 bp

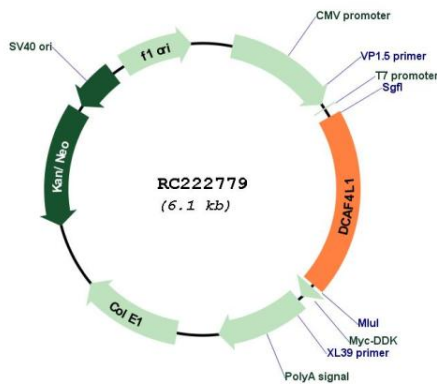
**Locus ID:** 285429

**UniProt ID:** [Q3SXM0](#)

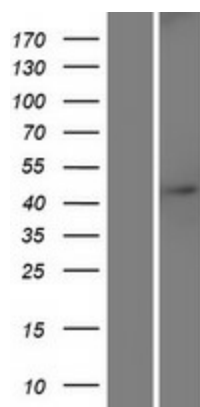
**Cytogenetics:** 4p13

**MW:** 44.1 kDa

**Product images:**



Circular map for RC222779



Western blot validation of overexpression lysate (Cat# [LY422271]) using anti-DDK antibody (Cat# [TA50011-100]). Left: Cell lysates from untransfected HEK293T cells; Right: Cell lysates from HEK293T cells transfected with RC222779 using transfection reagent MegaTran 2.0 (Cat# [TT210002]).