

Product datasheet for **RC222771**

CTNND1 (NM_001085458) Human Tagged ORF Clone

Product data:

| | |
|---------------------------|---|
| Product Type: | Expression Plasmids |
| Product Name: | CTNND1 (NM_001085458) Human Tagged ORF Clone |
| Tag: | Myc-DDK |
| Symbol: | CTNND1 |
| Synonyms: | BCDS2; CAS; CTNND; p120; p120(CAS); p120(CTN); P120CAS; P120CTN |
| Mammalian Cell Selection: | Neomycin |
| Vector: | pCMV6-Entry (PS100001) |
| E. coli Selection: | Kanamycin (25 ug/mL) |



[View online »](#)

ORF Nucleotide Sequence:

>RC222771 representing NM_001085458
 Red=Cloning site Blue=ORF Green=Tags(s)

TTTTGTAATACGACTCACTATAGGGCGGCCGGAATTCGTCGACTGGATCCGGTACCGAGGAGATCTGCC
 GCC**CGGATCGCC**

ATGGACGACTCAGAGGTGGAGTCGACCGCCAGCATCTTGGCCTCTGTGAAGGAACAAGAGGCCAGTTTG
 AGAAGCTGACCCGGGCGCTGGAGGAGGAACGGCGCCACGTCTCGGCGCAGCTGGAACGCGTCCGGGTCTC
 ACCACAAGATGCCAACCCACTCATGGCCAACGGCACACTACCCGCCGGCATCAGAACGGCCGTTTGTG
 GGCGATGCTGACCTTGAAGACAGAAATTTTCAGATTTGAAACTCAACGGACCCAGGATCACAGTCACC
 TTCTATATAGCACCATCCCAGGATGCAGGAGCCGGGCGAGATTGTGGAGACCTACACGGAGGAGGATCC
 TGAGGGAGCCATGTCTGTAGTCTCTGTGGAGACCTCAGATGATGGGACCACTCGGCGCACAGAGACCACG
 GTCAAGAAAGTAGTGAAGACTGTGACAACCGGACAGTACAGCCAGTCGATGAGGACCAGACGGGTTGC
 CTGTGGATGCTTCATCAGTTTCTAACAACTATATCCAGACTTTGGGTCGTGATTTCCGCAAGAATGGCAA
 TGGGGGACCTGGTCCCTATGTGGGGCAAGCTGGCACTGCTACCCTTCTAGGAACCTCCACTACCCTCCT
 GATGGTTATAGTCGCCACTATGAAGATGGTTATCCAGGTGGCAGTGATAACTATGGCAGTCTGTCCCGGG
 TGACCCGCATTGAGGAGCGGTATAGGCCAGCATGGAAGGCTACCGGGCACCTAGTAGACAGGATGTGTA
 TGGGCCCCAACCCAGGTTCCGGTAGGTGGGAGCAGCGTGGATCTGCATCGCTTTCATCCAGAGCCTTAT
 GGGCTAGAGGATGACCAGCGTAGTATGGGCTATGATGACCTGGATTATGGTATGATGTCTGATTATGGCA
 CTGCCCGTCGGACTGGGACCCCTCTGACCCTCGTCGGCGCCTCAGGAGCTATGAAGACATGATTGGTGA
 GGAGGTGCCATCGGATCAATACTACTGGGCTCCTTTGGCCAGCATGAGCGAGGAAGTTTAGCAAGCTTG
 GATAGCTGCGCAAAGGAGGGCCTCCACCTCCTAATTGGAGACAGCCAGAGCTGCCAGAGGTGATCGCCA
 TGCTTGGATTCCGCTTGGATGCTGTCAAGTCCAATGCAGCTGCATACCTGCAACACTTATGCTACCGCAA
 TGACAAGGTGAAGACTGACGTGCGGAAGCTCAAGGGCATCCAGTACTGGTGGGATTGTTAGACCATCCC
 AAAAAGGAAGTGACCTTGGAGCCTGTGGAGCTCTCAAGAATATCTCTTTTGGACGTGACCAGGATAACA
 AGATTGCCATAAAAACTGTGATGGTGTGCCTGCCCTTGTGCGATTGCTTCGAAAGGCTCGTGATATGGA
 CCTTACTGAAGTTATTACCGGAACCCTGTGGAATCTTTCATCCCATGACTCAATCAAAATGGAGATTGTG
 GACCATGCACTGCATGCCTTACAGATGAAGTGATCATTCTCATTCTGGTTGGGAGCGGGAACCTAATG
 AAGACTGTAAGCCACGCCATATTGAGTGGGAATCGGTGCTACCAACACAGCTGGCTGCCTTAGGAATGT
 AAGCTCAGAGAGGAGTGAAGCTCGCCGGAACCTCGGGAATGTGATGGTTTAGTTGATGCCCTCATTTTC
 ATTTGTTACGGCTGAGATTGGGCAGAAGGATTACAGACAGCAAGCTTGTAGAGAAGTGTGTTTGCCTTCTTC
 GGAACCTATCATCAAGTTACCGGGAGATCCCACAGGCAGAGCGTTACCAAGAGGCAGCTCCCAATGT
 TGCCAACAATACTGGGCCACATGCTGCCAGTTGCTTTGGGGCCAAGAAGGGCAAAGATGAGTGGTTCTCC
 AGAGGGAAAAAACCCTATAGAGGATCCAGCAAACGATACAGTGGATTTCCCTAAAAGAACGAGTCCAGCTC
 GAGGCTATGAGCTCTTATTTACAGCCAGAGGTGGTTCGGATATACATCTCACTTCTTAAGGAGAGCAAGAC
 TCCTGCCATCCTAGAAGCCTCAGCTGGAGCTATCCAGAAGTGTGTGCTGGGCGCTGGACGTATGGTCGA
 TACATCCGCTCTGCTCTGCGTCAAGAGAAGGCTCTTTCTGCCATAGCTGACCTCCTGACTAATGAACATG
 AACGGTGGTGAAGCTGCATCTGGAGCACTGAGAAACCTGGCTGTGGATGCTCGCAACAAGAATTAAT
 TGGTAAACATGCTATTCCTAAGTGGTAAAGAATCTGCCAGGAGGACAGCAGAAGTCTCTTGGAAATTTCT
 TCTGAGGACACTGTCATCTCTATTTTGAACACTATCAACGAGGTTATCGCTGAGAAGTGGAGGCTGCCA
 AAAAGCTTCGAGAGACACAGGATTTGAGAAGCTGGTGTGATCAACAAATCAGGGAACCGCTCAGAAAA
 AGAAGTTCGAGCAGCAGCACTTGTATTACAGACAATCTGGGGATATAAGGAACTGCGGAAGCCACTGGAA
 AAAGAAGGATGGAAGAAATCAGACTTTCAGGTGAATCTAAACAATGCTTCCCGAAGCCAGAGCAGTCATT
 CATATGATGATAGTACTCTCCCTCTATTGACCGGAACCAAAAATCAGATAAGAAACCTGATCGGGAAGA
 AATTCAGATGAGCAATATGGGATCAAACACAAAATCACTAGATAACAATATTCCACACCAAAATGAGAGA
 GGAGACCACAATAGAACACTGGATCGATCGGGGATCTAGGCGACATGGAGCCATTGAAGGGAACAACAC
 CCTTGATGCAGGACGAGGGGACGGAATCTCTGGAGGAAGAGTTGGATGTGTTGGTTTTGGATGATGAGGG
 GGCCAAGTGTCTTACCCTCCATGCAGAAGATT

AG**CGGACCG**ACGCGTACGCGGCCGCTCGAGCAGAAACTCATCTCAGAAGAGGATCTGGCAGCAAATGATATCC
 TGGATTACAAGGATGACGACGATAAGGTTTAA

Protein Sequence: >RC222771 representing NM_001085458
 Red=Cloning site Green=Tags(s)

MDDSEVESTASILASVKEQEAQFEKLTRALEEERRHVSAQLERVRVSPQDANPLMANGTLTRRHQNGRFV
 GDADLERQKFSDLKLNQPQDHSLLYSTIPRMQEPGQIVETYTEDPEGAMSVSVSVETSDDGTTTRRTETT
 VKKVVKTVTRTVQPVAMGPDGLPVDASSVSNNYIQTLGRDFRKNNGGPGPYVQAGTATLPRNFHYPP
 DGYSRHYEDGYGGSDNYGSLSRVTRIEERYRPSMEGYRAPSRQDYYGQPQVVRVGGSSVDLHRFHPEPY
 GLEDDQRSMGYDDL DYGMMSDYGTARRTGTPSDPRRRLRSYEDMIGEEVPSDQYYWAPLAQHERGSLASL
 DSLRKGPPPPNWRQPELPEVIAMLGFRLDVAVKSNAAYLQHLCYRNDKVKTDVRLKLGIPVLVGLLDHP
 KKEVHLGACGALKNISFGRDQDNKIAIKNCDGVPALVRLLRKARDMDL TEVITGTLWNLSSHDSIKMEIV
 DHALHALTDEVIIPHSGWEREPNEDCKPRHIEWESVL TNTAGCLRNVSSESEARRKLRCDGLVDALIF
 IVQAEIGQKSDSKLVENCVCLLRNLSYQVHREIPQAERYQEAAPNVANNTGPHAASCFGAKKGDWFS
 RGKKPIEDPANDTVDFPKRTSPARGYELLFQPEVVRIYISLLKESKTPAILEASAGAIQNL CAGRWTYGR
 YIRSALRQEKALSAIADLLTNEHERVVKASGALRNLAVDARNKELIGKHAIPNLVKNLPGGQQNSSWNF
 SEDTVISILNTINEVIAENLEAAKKLRETQIEKLV L INKSGNRSEKEVRAAALVLQTIWGYKELRKPLE
 KEGWKKSDFQVNLNNASRSQSSHSYDDSTLPLIDRNQKSDKKPDREEIQMSNMGSNTKSLDNNYSTPNER
 GDHNRTLDRSGDLGDMPELKGTTPLMQDEGQESLEEELDVLVLDDEGGQVSYPSMQKI

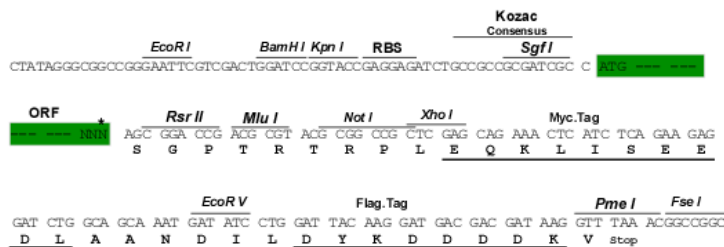
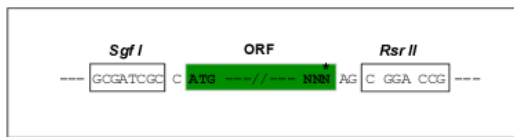
SGP TRTRPLEQKLI SEEDLAANDILDYKDDDDKV

Chromatograms: https://cdn.origene.com/chromatograms/mg8004_c08.zip

Restriction Sites: SgfI-RsrII

Cloning Scheme:

Cloning sites used for ORF Shuttling:



* The last codon before the Stop codon of the ORF

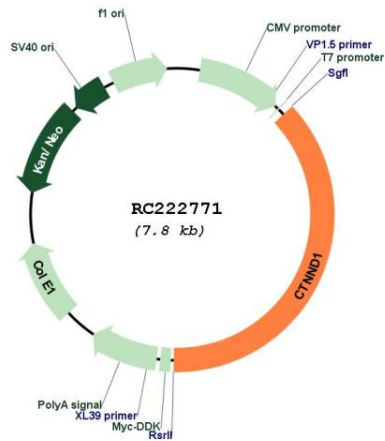
ACCN: NM_001085458

ORF Size: 2904 bp

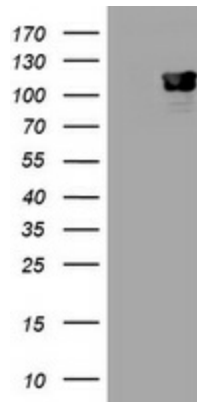
| | |
|-------------------------------|--|
| OTI Disclaimer: | <p>Due to the inherent nature of this plasmid, standard methods to replicate additional amounts of DNA in E. coli are highly likely to result in mutations and/or rearrangements. Therefore, OriGene does not guarantee the capability to replicate this plasmid DNA. Additional amounts of DNA can be purchased from OriGene with batch-specific, full-sequence verification at a reduced cost. Please contact our customer care team at custsupport@origene.com or by calling 301.340.3188 option 3 for pricing and delivery.</p> <p>The molecular sequence of this clone aligns with the gene accession number as a point of reference only. However, individual transcript sequences of the same gene can differ through naturally occurring variations (e.g. polymorphisms), each with its own valid existence. This clone is substantially in agreement with the reference, but a complete review of all prevailing variants is recommended prior to use. More info</p> |
| OTI Annotation: | This clone was engineered to express the complete ORF with an expression tag. Expression varies depending on the nature of the gene. |
| Components: | The ORF clone is ion-exchange column purified and shipped in a 2D barcoded Matrix tube containing 10ug of transfection-ready, dried plasmid DNA (reconstitute with 100 ul of water). |
| Reconstitution Method: | <ol style="list-style-type: none"> 1. Centrifuge at 5,000xg for 5min. 2. Carefully open the tube and add 100ul of sterile water to dissolve the DNA. 3. Close the tube and incubate for 10 minutes at room temperature. 4. Briefly vortex the tube and then do a quick spin (less than 5000xg) to concentrate the liquid at the bottom. 5. Store the suspended plasmid at -20°C. The DNA is stable for at least one year from date of shipping when stored at -20°C. |
| Note: | Plasmids are not sterile. For experiments where strict sterility is required, filtration with 0.22um filter is required. |
| RefSeq: | NM_001085458.1 , NP_001078927.1 |
| RefSeq Size: | 6363 bp |
| RefSeq ORF: | 2907 bp |
| Locus ID: | 1500 |
| UniProt ID: | O60716 |
| Cytogenetics: | 11q12.1 |
| Protein Families: | Druggable Genome |
| Protein Pathways: | Adherens junction, Leukocyte transendothelial migration |
| MW: | 108.2 kDa |

Gene Summary:

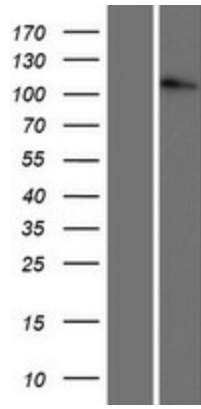
This gene encodes a member of the Armadillo protein family, which function in adhesion between cells and signal transduction. Multiple translation initiation codons and alternative splicing result in many different isoforms being translated. Not all of the full-length natures of the described transcript variants have been determined. Read-through transcription also exists between this gene and the neighboring upstream thioredoxin-related transmembrane protein 2 (TMX2) gene. [provided by RefSeq, Dec 2010]

Product images:


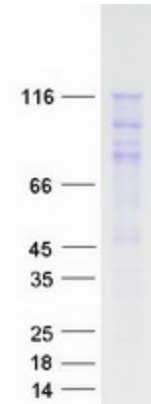
Circular map for RC222771



HEK293T cells were transfected with the pCMV6-ENTRY control (Cat# [PS100001], Left lane) or pCMV6-ENTRY CTNND1 (Cat# RC222771, Right lane) cDNA for 48 hrs and lysed. Equivalent amounts of cell lysates (5 ug per lane) were separated by SDS-PAGE and immunoblotted with anti-CTNND1 (Cat# [TA800807]). Positive lysates [LY421307] (100ug) and [LC421307] (20ug) can be purchased separately from OriGene.



Western blot validation of overexpression lysate (Cat# [LY421307]) using anti-DDK antibody (Cat# [TA50011-100]). Left: Cell lysates from untransfected HEK293T cells; Right: Cell lysates from HEK293T cells transfected with RC222771 using transfection reagent MegaTran 2.0 (Cat# [TT210002]).



Coomassie blue staining of purified CTNND1 protein (Cat# [TP322771]). The protein was produced from HEK293T cells transfected with CTNND1 cDNA clone (Cat# RC222771) using MegaTran 2.0 (Cat# [TT210002]).