

Product datasheet for **RC222769**

RHCE (NM_138618) Human Tagged ORF Clone

Product data:

Product Type:	Expression Plasmids
Product Name:	RHCE (NM_138618) Human Tagged ORF Clone
Tag:	Myc-DDK
Symbol:	RHCE
Synonyms:	CD240CE; RH; Rh4; RH30A; RHC; RHCE(152N); RHE; RhIVb(J); RHIXB; RHNA; RHPI; RhVI; RhVIII
Mammalian Cell Selection:	Neomycin
Vector:	pCMV6-Entry (PS100001)
E. coli Selection:	Kanamycin (25 ug/mL)
ORF Nucleotide Sequence:	>RC222769 representing NM_138618 Red=Cloning site Blue=ORF Green=Tags(s)

TTTTGTAATACGACTCACTATAGGGCGGCCGGAATTCGTCGACTGGATCCGGTACCGAGGAGATCTGCC
GCC**CGATCGCC**

ATGAGCTCTAAGTACCCGCGTCTGTCCGGCGCTGCCTGCCCTCTGCGCCCTAACACTGGAAGCAGCTC
TCATTCTCTCTTCTATTTTTTACCCACTATGACGCTTCCTTAGAGGATCAAAGGGGCTCGTGGCATC
CTATCAAGTTGGCCAAGATCTGACCGTATGGCGCCATTGGCTTGGGCTTCTCACCTCGAGTTTCCGG
AGACACAGCTGGAGCAGTGTGGCCTTCAACCTTTCATGCTGGCGCTTGGTGTGCAGTGGCAATCTGC
TGGACGGCTTCTGAGCCAGTTCCTTCTGGGAAGGTGGTCATCACACTGTTCAATTCGCTGGCCAC
CATGAGTGCTATGTCGGTGTGATCTCAGCGGGTGTCTTGGGAAGGTCAACTTGGCGCAGTTGGTG
GTGATGGTGTGGTGGAGGTGACAGCTTATGGCACCTGAGGATGGTCATCAGTAATATCTTCAACACAG
ACTACCACATGAACCTGAGGCCTTCTACGTGTTGCGAGCCTATTTGGGCTGACTGTGGCTGGTGCCT
GCCAAAGCCTCTACCAAGGGAACGGAGGATAATGATCAGAGAGCAACGATACCCAGTTTGTCTGCCATG
CTGGGCGCCCTCTTCTTGTGGATGTTCTGGCCAAGTGTCAACTCTGCTCTGCTGAGAAGTCCAATCCAAA
GGAAGAATGCCATGTTCAACACCTACTATGCTCTAGCAGTCAGTGGTGACAGCCATCTCAGGGTCATC
CTTGGCTCACCCCAAAGGAAGATCAGCATGACTTATGTGCACAGTGGGTTGGCAGGAGGCGTGGCT
GTGGTACCTCGTGTACCTGATCCCTTCTCCGTGGCTTGGCCTGGTGGTCTTGTGGCTGGGCTGA
TCTCCATCGGGGAGCCAAGTGCCTGCCGATTGGCTTCCAGGTCTCCTCAGCATTGGGAACTCAGCT
TGGCCATCGTGATAGCTCTCACGCTGGTCTCCTGACAGGTTTGTCTCTAAATCTCAAATATGAAAGC
ACCTCATGTGGC

ACGCGTACGCGGCCGCTCGAGCAGAACTCATCTCAGAAGAGGATCTGGCAGCAAATGATATCCTGGATT
ACAAGGATGACGACGATAAGGTTAA



[View online »](#)

Reconstitution Method:

1. Centrifuge at 5,000xg for 5min.
2. Carefully open the tube and add 100ul of sterile water to dissolve the DNA.
3. Close the tube and incubate for 10 minutes at room temperature.
4. Briefly vortex the tube and then do a quick spin (less than 5000xg) to concentrate the liquid at the bottom.
5. Store the suspended plasmid at -20°C. The DNA is stable for at least one year from date of shipping when stored at -20°C.

RefSeq: [NM_138618.5](#)

RefSeq Size: 1501 bp

RefSeq ORF: 1065 bp

Locus ID: 6006

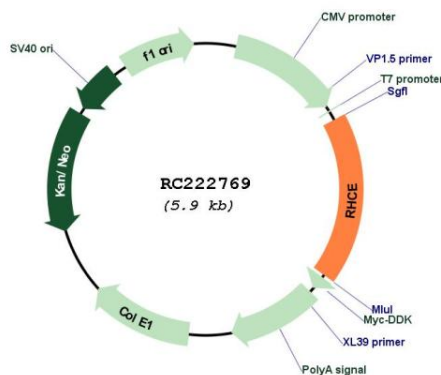
Cytogenetics: 1p36.11

Protein Families: Transmembrane

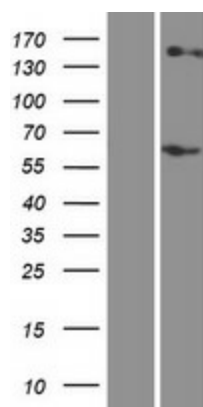
MW: 38.4 kDa

Gene Summary: The Rh blood group system is the second most clinically significant of the blood groups, second only to ABO. It is also the most polymorphic of the blood groups, with variations due to deletions, gene conversions, and missense mutations. The Rh blood group includes this gene which encodes both the RhC and RhE antigens on a single polypeptide and a second gene which encodes the RhD protein. The classification of Rh-positive and Rh-negative individuals is determined by the presence or absence of the highly immunogenic RhD protein on the surface of erythrocytes. A mutation in this gene results in amorph-type Rh-null disease. Alternative splicing of this gene results in multiple transcript variants encoding several different isoforms. [provided by RefSeq, Aug 2016]

Product images:



Circular map for RC222769



Western blot validation of overexpression lysate (Cat# [LY408453]) using anti-DDK antibody (Cat# [TA50011-100]). Left: Cell lysates from untransfected HEK293T cells; Right: Cell lysates from HEK293T cells transfected with RC222769 using transfection reagent MegaTran 2.0 (Cat# [TT210002]).