

Product datasheet for **RC222768**

XPNPEP2 (NM_003399) Human Tagged ORF Clone

Product data:

Product Type:	Expression Plasmids
Product Name:	XPNPEP2 (NM_003399) Human Tagged ORF Clone
Tag:	Myc-DDK
Symbol:	XPNPEP2
Synonyms:	AEACEI; APP2
Mammalian Cell Selection:	Neomycin
Vector:	pCMV6-Entry (PS100001)
E. coli Selection:	Kanamycin (25 ug/mL)



[View online »](#)

**ORF Nucleotide
Sequence:**

>RC222768 representing NM_003399
 Red=Cloning site Blue=ORF Green=Tags(s)

TTTTGTAATACGACTCACTATAGGGCGGCCGGGAATTCGTCGACTGGATCCGGTACCGAGGAGATCTGCC
 GCC**CGGATCGCC**

ATGGCCCGGGCTCACTGGGGCTGCTGCCCTGGCTGGTCTCTCTGTGCTTGTGCTGGGGCCACACAA
 AGCCAGTGGACCTTGGAGGGCAGGATGTGAGAACTGTTCCACCAACCCCTTACCTTCCAGTTACTGT
 GGTCAATACCACAATGTCACTCAGACCCCTCCGCCAGCAGATGCAGACCCAGAATCTCTCAGCCTACATC
 ATCCCAGGCACAGATGCTCACATGAACGAGTACATCGGCCAACATGACGAGAGGGGTGCGTGGATTACAG
 GCTTTACAGGGTCTGCAGGAAGTGCAGTGGTACTATGAAGAAAGCAGCTGTCTGGACCGACAGTCGCTA
 CTGGACTCAGGCTGAGCGGCAGATGGACTGCAACTGGGAGCTCCATAAGGAAGTTGGCACCCTCTATT
 GTCACCTGGCTCCTCACCAGATTCCCCTGGAGGGCGTGGGTTTTGACCCCTCCTCTGTCCATTG
 ACACCTGGGAGAGTTATGATCTGGCCCTCAAGGCTTAACAGACAGCTGGTGTCCATCACAACTCT
 TGTGGACCTGGTATGGGGATCAGAGAGGCCACCGTTCCAAATCAACCCATTTATGCCCTGCAGGAGGCA
 TTCACAGGGAGCACTTGGCAGGAGAAAGTATCTGGCGTCCGAAGCCAGATGCAGAAGCATAAAAGTCC
 CGACTGCCGTCCTTCTGTGCGCGCTTGAGGAGACGGCCTGGCTCTTCAACCTTCGAGCCAGTGACATCCC
 CTATAACCCCTTCTTCTATTCTACACGCTGCTCACAGACTCTTCTATTAGGTTGTTTGGCAAACAAGAGT
 CGCTTTAGCTCCGAAACCTTGAGCTATCTGAACTCCAGTTGCACAGGCCCATGTGTGTGCAAAATCGAGG
 ATTACAGCCAAGTTCGTGACAGCATCCAGGCCTACTCATTGGGAGATGTGAGGATCTGGATTGGGACCAG
 CTATACCATGTATGGGATCTATGAAATGATACCAAGGAGAACTCGTGACAGACACCTACTCCCCAGTG
 ATGATGACCAAGGCAGTGAAGAACAGCAAGGAGCAGGCCCTCCTCAAGGCCAGCCAGTGGCGGGACGCTG
 TGGCTGTGATCCGGTACTTGGTCTGGCTGGAGAAGAAGTGGCCAAAGGCACAGTGGATGAGTTCTCGGG
 GGCAGAGATCGTGGACAAGTTCGAGGAGAAGAACAAGTTCCTCCTCGGACCCAGTTTTGAAACCATCTCT
 GCTAGTGGTCTGAATGCTGCCCTGGCCACTACAGCCGACCAAGGAGCTGAACCGCAAGCTGTCCTCAG
 ATGAGATGTACCTGCTGGACTCTGGGGGCAGTACTGGGACGGGACCACAGACATCACCAGAACAGTCCA
 CTGGGGCACCCCTCTGCCTTCCAGAAGGAGGCATACACCCGTGTGCTGATAGGAAATATTGACCTGTCC
 AGGCTCATCTTCCCGCTGCTACATCAGGGCGAATGGTGGAGGCCTTGGCCGACAGCCTTGTGGGATG
 CTGGTCTCAATTATGGTCATGGGACAGGCCACGGCATTGGCAACTCCTGTGTGTCATGAGTGGCCAGT
 GGGATTCCAGTCCAACAACATCGCTATGGCCAAGGGCATGTTCACTTCCATTGAACCTGGTTACTATAAG
 GATGGAGAATTTGGGATCCGTCTCGAAGATGTGGCTCTCGTGGTGAAGCAAAGACCAAGTACCCAGGGA
 GCTACCTGACCTTTGAAGTGGTATCATTGTGCCCTATGACCGGAACCTCATCGATGTCAGCCTGCTGTC
 TCCCGAGCATCTCCAGTACCTGAATCGCTACTACCAGACCATCCGGGAGAAGGTGGGTCCAGAGCTGCAG
 AGGCGCCAGCTACTAGAGGAGTTCGAGTGGCTTCAACAGCACACAGAGCCCTGGCCGCCAGGGCCCCAG
 ACACCCCTCCTGGGCCTCTGTGTTAGTGGTCTCCACCCTTGCCATCCTTGGCTGGAGTGTCT

ACGCGTACGCGGGCCGCTCGAGCAGAACTCATCTCAGAAGAGGATCTGGCAGCAATGATATCCTGGATT
 ACAAGGATGACGACGATAAGGTTTAA

Protein Sequence: >RC222768 representing NM_003399
Red=Cloning site Green=Tags(s)

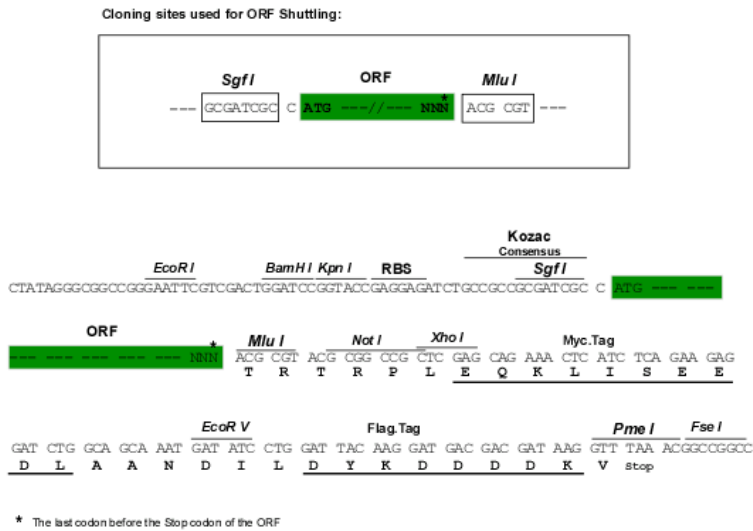
MARAHWGCCPWL VLLCACAWGHTKPVDLGGQDVRNCSTNPPYLPVTVVNTTMSL TALRQQMQTQNL SAYI
 IPGTD AHMNEYIGQHDERRAWITGFTGSAGTAVVTMKA AVWTD SRYWTQAERQMDCNWELHKEVGTTPI
 VTWLL TEIPAGGRVGFDPFLLSIDTWESYDLALQGSNRQLVSITNLVDLVWGSRPPVPNQPIYALQEA
 FTGSTWQEKVSGVRSQM QKHQKVPTAVLLSALEETAWL FNLRASDIPYNPFFYSYTLTLDSSIRLFANKS
 RFSSETLSYLNSSCTGPMC VQIEDYSQVRDSIQAYS LGDVRIWIGTSYTM YGIYEMIPKEKLVTD TYSPV
 MMTKAVKNSKEQALLKASHVRDAVA V IRYL VWLEKNVPKGT VDEFSGAEI VDKFRGEEQ FSSGSPFETIS
 ASGLNAALAHYSPTEKELNRKLSSDEM YLLDSGGQYWDGTTDITR TVHWGTPSAFQKEAYTRVLIGNIDLS
 RLIFPAATSGRMVEAFARRALWDAGL NYGHGTGHGIGNFL CVHEWPVGFQSNNIAMAKGMFTSIEPGYYK
 DGEFGIRLEDVALVVEAKTKYPSYLTFEVV SFVPYDRNLIDV SLLSPEHLQYLN RRYQTIREKVGPELQ
 RRQLLEEFEWLQQHTEPLAARAPDTAS WASVLVSTLAILGWSV

TRTRPLEQKLISEEDLANDILDYKDDDDKV

Chromatograms: https://cdn.origene.com/chromatograms/mk6252_a10.zip

Restriction Sites: SgfI-MluI

Cloning Scheme:



ACCN: NM_003399

ORF Size: 2022 bp

OTI Disclaimer: The molecular sequence of this clone aligns with the gene accession number as a point of reference only. However, individual transcript sequences of the same gene can differ through naturally occurring variations (e.g. polymorphisms), each with its own valid existence. This clone is substantially in agreement with the reference, but a complete review of all prevailing variants is recommended prior to use. [More info](#)

OTI Annotation: This clone was engineered to express the complete ORF with an expression tag. Expression varies depending on the nature of the gene.

Components: The ORF clone is ion-exchange column purified and shipped in a 2D barcoded Matrix tube containing 10ug of transfection-ready, dried plasmid DNA (reconstitute with 100 ul of water).

Reconstitution Method:

1. Centrifuge at 5,000xg for 5min.
2. Carefully open the tube and add 100ul of sterile water to dissolve the DNA.
3. Close the tube and incubate for 10 minutes at room temperature.
4. Briefly vortex the tube and then do a quick spin (less than 5000xg) to concentrate the liquid at the bottom.
5. Store the suspended plasmid at -20°C. The DNA is stable for at least one year from date of shipping when stored at -20°C.

RefSeq: [NM_003399.6](#)

RefSeq Size: 3329 bp

RefSeq ORF: 2025 bp

Locus ID: 7512

UniProt ID: [O43895](#)

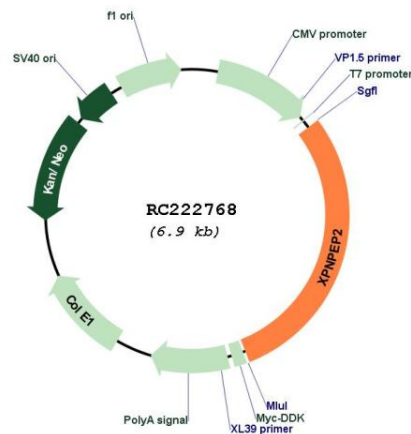
Cytogenetics: Xq26.1

Protein Families: Druggable Genome, Protease

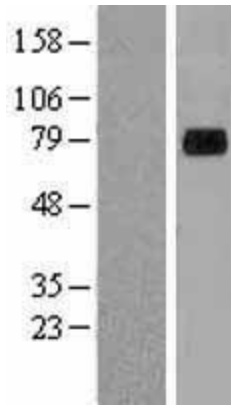
MW: 75.4 kDa

Gene Summary: Aminopeptidase P is a hydrolase specific for N-terminal imido bonds, which are common to several collagen degradation products, neuropeptides, vasoactive peptides, and cytokines. Structurally, the enzyme is a member of the 'pita bread fold' family and occurs in mammalian tissues in both soluble and GPI-anchored membrane-bound forms. A membrane-bound and soluble form of this enzyme have been identified as products of two separate genes. [provided by RefSeq, Jul 2008]

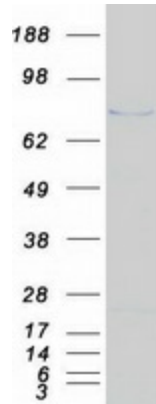
Product images:



Circular map for RC222768



Western blot validation of overexpression lysate (Cat# [LY418716]) using anti-DDK antibody (Cat# [TA50011-100]). Left: Cell lysates from untransfected HEK293T cells; Right: Cell lysates from HEK293T cells transfected with RC222768 using transfection reagent MegaTran 2.0 (Cat# [TT210002]).



Coomassie blue staining of purified XPNPEP2 protein (Cat# [TP322768]). The protein was produced from HEK293T cells transfected with XPNPEP2 cDNA clone (Cat# RC222768) using MegaTran 2.0 (Cat# [TT210002]).