

Product datasheet for **RC222766**

PRDM1 (NM_182907) Human Tagged ORF Clone

Product data:

Product Type:	Expression Plasmids
Product Name:	PRDM1 (NM_182907) Human Tagged ORF Clone
Tag:	Myc-DDK
Symbol:	PRDM1
Synonyms:	BLIMP1; PRDI-BF1
Mammalian Cell Selection:	Neomycin
Vector:	pCMV6-Entry (PS100001)
E. coli Selection:	Kanamycin (25 ug/mL)



[View online »](#)

ORF Nucleotide
Sequence:

>RC222766 ORF sequence
Red=Cloning site Blue=ORF Green=Tags(s)

TTTTGTAATACGACTCACTATAGGGCGGCCGGGAATTCGTGACTGGATCCGGTACCGAGGAGATCTGCC
GCC**CGGATCGCC**

ATGGAAAAGATCTATTCCAGAGGGGAGCTTCACTTTCATTGACGGCTTAAATGAAGAGAAAAGCAACT
GGATGCGCTATGTGAATCCAGCACACTCTCCCGGGAGCAAAAACCTGGCTGCGTGTGAGAACGGGATGAA
CATCTACTTCTACACCATTAAGCCCATCCCTGCCAACCAGGAACCTTCTGTGTGGTATTGTCGGGACTTT
GCAGAAAAGGCTTCACTACCCTTATCCCGGAGAGCTGACAATGATGAATCTCACACAAACACAGAGCAGTC
TAAAGCAACCGAGCACTGAGAAAATGAACTCTGCCCAAAGAATGTCCCAAAGAGAGAGTACAGCGTGAA
AGAAATCTAAAATTGGACTCCAACCCCTCAAAGGAAAGGACCTCTACCGTTCTAACATTTACCCCTC
ACATCAGAAAAGGACCTCGATGACTTTAGAAGACGTGGGAGCCCCGAAATGCCCTTCTACCTCGGGTCG
TTTACCCCATCCGGGCCCTCTGCCAGAAGACTTTTTGAAAGCTTCCCTGGCCTACGGGATCGAGAGACC
CACGTACATCACTCGCTCCCCATTCCATCCTCCACCCTCAAGCCCCCTGCAAGAAGCAGCCCCGAC
CAAAGCTCAAGAGCTCCAGCCCTCACAGCAGCCCTGGGAATACGGTGTCCCTGTGGGCCCCGGCTCTC
AAGAGCACCGGGACTCCTACGCTTACTTGAACGCGTCTACGGCACGGAAGGTTTGGGCTCTACCTGG
CTACGCACCCCTGCCCACTCCCGCCAGCTTTCATCCCTCGTACAACGCTCACTACCCCAAGTTCCTC
TTGCCCCCTACGGCATGAATTGTAATGGCCTGAGCGCTGTGAGCAGCATGAATGGCATCAACAACCTTTG
GCCTTCTCCCGAGGCTGTGCCCTGTCTACAGCAATCTCCTCGGTGGGGGAGCCTGCCCAACCCATGCT
CAACCCCACTTCTCTCCGAGCTCGTGCCTCAGATGGAGCCCGGAGGTTGCTCCAGCCGGAGCATCCC
AGGGAGGTGCTTGTCCCGGCCCCACAGTGCCTTCTCCTTTACCGGGCCCGCCGACGATGAAGGACA
AGGCCTGTAGCCCCACAAGCGGGTCTCCACGGCGGGAACAGCCGCCACGCGAGAACATGTGGTGCAGCC
CAAAGCTACCTCAGCAGCGATGGCAGCCCCAGCAGCGACGAAGCCATGAATCTCATTAAAAACAAAAGA
AACATGACCGGCTACAAGACCTTCCCTACCCGCTGAAGAAGCAGAACGGCAAGTCAAGTACGAATGCA
ACGTTTGCCCAAGACTTTCGGCCAGCTCTCCAATCTGAAGGTCCACCTGAGAGTGCACAGTGGAGAACG
GCCTTTCAAATGTCAGACTTGAACAAGGGCTTACTCAGCTCGCCACCTGCAGAAACTACCTGGTA
CACACGGGAGAAAAGCCACATGAATGCCAGGTCTGCCACAAGAGATTTAGCAGCACCAGCAATCTCAAGA
CCCACCTGCGACTCCATTCTGGAGAGAAACCATAACCAATGCAAGGTGTGCCCTGCCAAGTTCACCCAGTT
TGTGCACCTGAACTGCACAAGCGTCTGCACACCCGGGAGCGGCCCCACAAGTGTCCCAGTGCCACAAG
AACTACATCCATCTCTGTAGCCTCAAGGTTACCTGAAAGGGAAGTGCCTGCGGCCCGGCGCCTGGGC
TGCCCTTGAAGATCTGACCCGAATCAATGAAGAAATCGAGAAGTTTGACATCAGTGACAATGCTGACCG
GCTCGAGGACGTGGAGGATGACATCAGTGTGATCTCTGTAGTGGAGAAGGAAATTCTGGCCGTGGTCA
AAAGAGAAAAGAAAGAACTGGCCTGAAAGTGTCTTTGCAAAGAAACATGGGGAATGGACTCTCTCCTCAG
GGTGCAGCCTTTATGAGTCATCAGATCTACCCCTCATGAAGTTGCCTCCAGCAACCCACTACCTCTGGT
ACCTGTAAGGTCAAACAAGAAACAGTTGAACCAATGGATCCT

AG**CGGACCG**ACGCGTACGCGGCCGCTCGAGCAGAAAACCTCATCTCAGAAGAGGATCTGGCAGCAAATGATATCC
TGGATTACAAGGATGACGACGATAAGGTTTAA

Protein Sequence: >RC222766 protein sequence
Red=Cloning site Green=Tags(s)

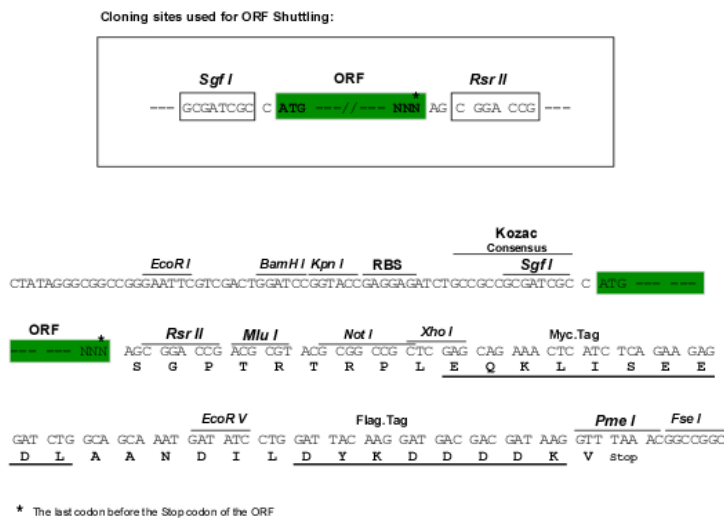
MEKIYSRGE LHHFIDGFNEEKSNWMRYVNP AHS PREQNL AACQNGMNIYFYTIKPI PANQELLVWYCRDF
 AERLHYPYPGEL TMMNL TQTQSSLKQPST EKNELCPKNVPKREYSVKEILKLDNSNPSK GKDLYRSNISPL
 TSEKLD DDFRRRGSP EMPFYPRVVYPIR APLPEDFLKASLAYGIERPTYITRSPIPSSTTPSP SARSSPD
 QSLKSSSPHSSPGNTVSPVPGSGEQEHRDSYAYLNASYGTEGLGSPGYAPLPHLPPAFIPSYNAHYPKFL
 LPPYGMNCNGLSAVSSMNGINNFGLFPRLCPVYSNLLGGGSLPHPMLNPTSLPSSLP SDGARRLLQPEHP
 REVLVPAPHS AFSTGAAASMKDKAC SPTS GSPTAGTAATAEHVVQPKATSAAMAAPSSDEAMNLIK NKR
 NMTGYKTLPYPLKKQNGKIKYECNVCAKTFGQLSNLKVHLRVHSGERPFCQTCNKGFTQLAHLQKH YLV
 HTGKPEHCQVCHKRFSSTNLKTHLR LHSGEKPYQCKVCPAKFTQFVHLK LHKRLHTRERPHKCSQCHK
 NYIHLCSLKVHLKGNCAAPAPGLPLEDLTRINEEIEKFDISDNADRL EDVEDDISVISVVEKEILAVVR
 KEKEETGLKVSLQRNMGNLLSSGCSLEYSSDLPLMKLPPSNPLPLVPVKVKQETVEPMDP

SGPTRTRPLEQKLISEEDLAANDILDYKDDDDKV

Chromatograms: https://cdn.origene.com/chromatograms/mk6624_c05.zip

Restriction Sites: SgfI-RsrII

Cloning Scheme:



ACCN: NM_182907

ORF Size: 2073 bp

OTI Disclaimer: The molecular sequence of this clone aligns with the gene accession number as a point of reference only. However, individual transcript sequences of the same gene can differ through naturally occurring variations (e.g. polymorphisms), each with its own valid existence. This clone is substantially in agreement with the reference, but a complete review of all prevailing variants is recommended prior to use. [More info](#)

OTI Annotation: This clone was engineered to express the complete ORF with an expression tag. Expression varies depending on the nature of the gene.

Components: The ORF clone is ion-exchange column purified and shipped in a 2D barcoded Matrix tube containing 10ug of transfection-ready, dried plasmid DNA (reconstitute with 100 ul of water).

Reconstitution Method:

1. Centrifuge at 5,000xg for 5min.
2. Carefully open the tube and add 100ul of sterile water to dissolve the DNA.
3. Close the tube and incubate for 10 minutes at room temperature.
4. Briefly vortex the tube and then do a quick spin (less than 5000xg) to concentrate the liquid at the bottom.
5. Store the suspended plasmid at -20°C. The DNA is stable for at least one year from date of shipping when stored at -20°C.

RefSeq: [NM_182907.3](#)

RefSeq Size: 4753 bp

RefSeq ORF: 2076 bp

Locus ID: 639

UniProt ID: [O75626](#)

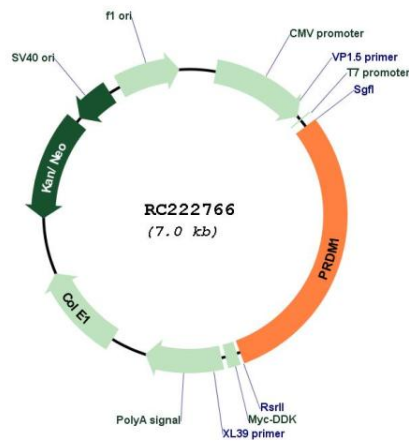
Cytogenetics: 6q21

Protein Families: Transcription Factors

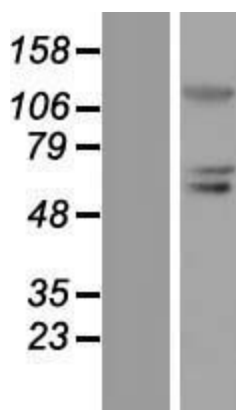
MW: 76.8 kDa

Gene Summary: This gene encodes a protein that acts as a repressor of beta-interferon gene expression. The protein binds specifically to the PRDI (positive regulatory domain I element) of the beta-IFN gene promoter. Transcription of this gene increases upon virus induction. Two alternatively spliced transcript variants that encode different isoforms have been reported. [provided by RefSeq, Jul 2008]

Product images:



Circular map for RC222766



Western blot validation of overexpression lysate (Cat# [LY405321]) using anti-DDK antibody (Cat# [TA50011-100]). Left: Cell lysates from untransfected HEK293T cells; Right: Cell lysates from HEK293T cells transfected with RC222766 using transfection reagent MegaTran 2.0 (Cat# [TT210002]).