

## Product datasheet for **RC222763**

### STAP2 (NM\_017720) Human Tagged ORF Clone

#### Product data:

Product Type:	Expression Plasmids
Product Name:	STAP2 (NM_017720) Human Tagged ORF Clone
Tag:	Myc-DDK
Symbol:	STAP2
Synonyms:	BKS
Mammalian Cell Selection:	Neomycin
Vector:	pCMV6-Entry (PS100001)
E. coli Selection:	Kanamycin (25 ug/mL)



[View online »](#)

**ORF Nucleotide Sequence:**

>RC222763 representing NM\_017720  
 Red=Cloning site Blue=ORF Green=Tags(s)

TTTTGTAATACGACTCACTATAGGGCGGCCGGAATTCGTCGACTGGATCCGGTACCGAGGAGATCTGCC  
 GCC**CGGATCGCC**

ATGGCCTCTGCCCTGAGGCCACCCCGTGTCCCAAGCCTAAGGGTGTCTGCCTTACACTACTATGAGA  
 GCTTTCTAGAGAAGAAGGGGCCCTGTGACCGGGATTACAAGAAGTTCTGGGCAGGCCTGCAGGGTCTCAC  
 CATTATTTTCTACAATAGCAATCGGACTTCCAGCACGTGGAGAAGCTCAACTTGGGAGCATTGAGAAA  
 CTCACAGATGAGATTCCTGGGGAAGCTCACGTGACCCTGGCACCCACTTCAGCCTGATTCTCCGGGATC  
 AGGAGATCAAGTTCAAGGTAGAGACCTTGGAGTGTGGGAAATGTGAAAGGCTTCATCTTAACGGTGGT  
 GGAGCTCCGTGTCCCGACCGACTTGACCCTGCTTCTGGGCACCTATACATGATGTCTGAAGTCTTGCC  
 AAAGAGGAGGCGCGCGTGCCTGGAGACACCCTCGTCTTCTGAAGGTGAGCCGGCTGGAGGCACAAC  
 TGCTCTGGAGCGCTACCCGAGTGCAGGAACTGCTGCTGCGGCCACGGGGACGGCGCCGACGGCGT  
 GTCGGTACCACGCGGCAGATGCACAACGGGACGCACGTGGTCCGGCATTACAAGGTGAAGCGGGAGGGC  
 CCCAAGTACGTGATCGATGTGGAACAGCCGTTCTTTCACCTCCCTGGACGCCGTGGTCAACTATTTCCG  
 TGTCGCATACAAAAAGGCGCTGGTGCCATTCCTGTTAGACGAGGACTACGAGAAGGTGCTAGGCTACGT  
 GGAAGCCGATAAGGAGAAATGGCGAGAATGTGTGGTGGCGCCCTCCGCTCCGGGCCAGGTCTGCACCC  
 TGCACAGGTGGCCCAAGCCGCTGTACCTGCGTCTAGCCAGGACAAGCTGCCCCACTGCCCCACTAC  
 CGAACCAGGAAGAGAACTACGTGACCCCATTTGGAGATGGCCAGCTGTTGACTATGAGAACCAAGATGT  
 GGCTTCTCTAGTTGGCCAGTCACTCTGAAGCCAAAGAAGTTGCCAAAGCCTCTGCCAAGTTCCTCAAG  
 CCACCCGTTGGACCAAGCCAGTAGAGAAGGGTTTACCATGTTGCCAGGCTGGTCTCGAAGTCTCTGA  
 CCTCAAGTATCCACCCACCTCAGCCTCCCAAGTGTGGGATTACCGGGCTGAGCCACCACACCTGGCC  
 TCATCTGTCTTCTTCCAGAGCCCAAAGTCTTAAATGGTGGCTTGGGCAGGAAGCTGCCAGTCAGTTCA  
 GCCCAGCCTCTTCCCCACAGCCGGGCTGGCAGACATGACGGCAGAGCTACAGAAGAAGCTGGAGAAGA  
 GCGGGCACTGGAGCAC

**ACGCGT**ACGCGGCCGCTCGAGCAGAACTCATCTCAGAAGAGGATCTGGCAGCAAATGATATCTGGATT  
 ACAAGGATGACGACGATAAGGTTTAA

**Protein Sequence:**

>RC222763 representing NM\_017720  
 Red=Cloning site Green=Tags(s)

MASALRPPRPVKPKGVLP SHYYESFLEKKGPCDRDYKKFWAGLQGLTIYFYNSNRDFQHVEKLN LGAFEK  
 LTDEIPWGSSRDPGTHFSLILRDQEIKFVETLECREMWKGFILTVVELRVPTDLTLLPGHLYMMSEVLA  
 KEEARRALETPSCFLKVSRLAQLLLERYPECGNLLLRPSGDGADGVSVTRQMHNGTHVVRHYKVKREG  
 PKYVIDVEQPF SCTLDAVVNYFVSHTKKALVPFLLEDYEVKLVGYVEADKENGENVVAPSAPGPGPAP  
 CTGGPKPLSPASSQDKLPPLPPLPNQEENYVTPIGDGPVVDYENQDVASSWPVILKPKKLPKPPAKLPK  
 PPVGPKEKGFHHVAQAGLELLTSSDPPTSASQSAGITGVSHHTWPHLSSLPEPKVFNGLGRKLPVSS  
 AQLFPFPTAGLADMTAELQKLEKRRALEH

**TR**TRPLEQKLISEEDLAANDILDYKDDDDKV

**Chromatograms:**

[https://cdn.origene.com/chromatograms/mk8060\\_g04.zip](https://cdn.origene.com/chromatograms/mk8060_g04.zip)

**Restriction Sites:**

Sgfl-MluI

**Cloning Scheme:**


**ACCN:** NM\_017720

**ORF Size:** 1347 bp

**OTI Disclaimer:** The molecular sequence of this clone aligns with the gene accession number as a point of reference only. However, individual transcript sequences of the same gene can differ through naturally occurring variations (e.g. polymorphisms), each with its own valid existence. This clone is substantially in agreement with the reference, but a complete review of all prevailing variants is recommended prior to use. [More info](#)

**OTI Annotation:** This clone was engineered to express the complete ORF with an expression tag. Expression varies depending on the nature of the gene.

**Components:** The ORF clone is ion-exchange column purified and shipped in a 2D barcoded Matrix tube containing 10ug of transfection-ready, dried plasmid DNA (reconstitute with 100 ul of water).

**Reconstitution Method:**

1. Centrifuge at 5,000xg for 5min.
2. Carefully open the tube and add 100ul of sterile water to dissolve the DNA.
3. Close the tube and incubate for 10 minutes at room temperature.
4. Briefly vortex the tube and then do a quick spin (less than 5000xg) to concentrate the liquid at the bottom.
5. Store the suspended plasmid at -20°C. The DNA is stable for at least one year from date of shipping when stored at -20°C.

**RefSeq:** [NM\\_017720.3](#)

**RefSeq Size:** 1557 bp

**RefSeq ORF:** 1350 bp

**Locus ID:** 55620

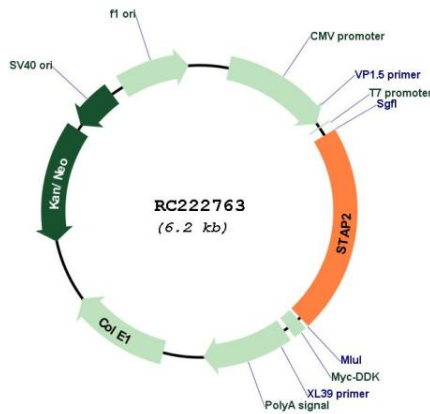
**UniProt ID:** [Q9UGK3](#)

**Cytogenetics:** 19p13.3

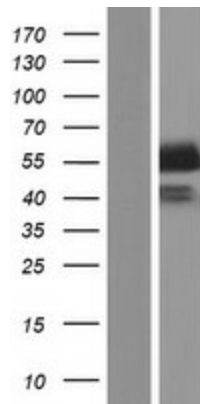
**MW:** 49.5 kDa

**Gene Summary:** This gene encodes the substrate of breast tumor kinase, an Src-type non-receptor tyrosine kinase. The encoded protein possesses domains and several tyrosine phosphorylation sites characteristic of adaptor proteins that mediate the interactions linking proteins involved in signal transduction pathways. Alternative splicing results in multiple transcript variants. [provided by RefSeq, Jul 2008]

**Product images:**



Circular map for RC222763



Western blot validation of overexpression lysate (Cat# [LY413599]) using anti-DDK antibody (Cat# [TA50011-100]). Left: Cell lysates from untransfected HEK293T cells; Right: Cell lysates from HEK293T cells transfected with RC222763 using transfection reagent MegaTran 2.0 (Cat# [TT210002]).