

Product datasheet for **RC222755**

TRP 7 (TRPC7) (NM_020389) Human Tagged ORF Clone

Product data:

Product Type:	Expression Plasmids
Product Name:	TRP 7 (TRPC7) (NM_020389) Human Tagged ORF Clone
Tag:	Myc-DDK
Symbol:	TRP 7
Synonyms:	TRP7
Mammalian Cell Selection:	Neomycin
Vector:	pCMV6-Entry (PS100001)
E. coli Selection:	Kanamycin (25 ug/mL)



[View online »](#)

ORF Nucleotide Sequence:

>RC222755 representing NM_020389
 Red=Cloning site Blue=ORF Green=Tags(s)

TTTTGTAATACGACTCACTATAGGGCGGCCGGGAATTCGTCGACTGGATCCGGTACCGAGGAGATCTGCC
 GCC**CGGATCGCC**

ATGTTGAGGAACAGCACCTTCAAAAACATGCAGCGCCGGCACACAACGCTGAGGGAGAAGGGCCGTCGCC
 AGGCCATCCGGGGTCCCGCTACATGTTCAACGAGAAGGGCACCACTGCTGACGCCGAGGAGGAGCGCTT
 CCTGGACTCGGCTGAGTATGGCAACATCCCGTGGTCCGAAAAATGCTGGAGGAGTCCAAGACCCTTAAC
 TTCAACTGTGTGGACTACATGGGGCAGAACGCTCTGCAGCTGGCCGTGGGCAACGAGCACCTAGAGGTCA
 CGGAGCTGCTGTGAAGAAGGAGAACCTGGCACGGGTGGGGACGCGCTGCTGCTGGCCATCAGCAAGGG
 CTATGTGCGCATCGTGGAGGCCATCCTCAACCACCCGGCCTTCGCGCAGGGCCAGCGCTGACGCTCAGC
 CCGCTGGAACAGGAGCTGCGCGACGACGACTTCTATGCCTACGACGAGGACGGCACGCGCTTCTCCACG
 ACATCACGCTATCATCCTGGCGGCGCACTGCCAGGAGTATGAGATCGTGACATCCTGCTGCTCAAGGG
 CGCCCGCATCGAGCGGCCACGACTACTTCTGCAAGTGAATGAGTGCACCGAGAAACAGCGGAAAGAC
 TCCTTCAGCCACTCGCGCTCGCGCATGAACGCCTACAAAGGACTGGCGAGTGTGCTACTTGTCCCTGT
 CCAGCGAAGACCCTGTCCTCACCGCCCTGGAGCTCAGCAACGAGTTAGCCAGACTAGCCAACATTGAGAC
 TGAATTTAAGAACGATTACAGGAAGTTATCTATGCAATGCAAGGATTTTGTAGTGGGCGTGTGGACCTG
 TGCCGAGACACAGAAGAGGTGGAAGCAATTTAAACGGTGATGTGAACTTCCAAGTCTGGTCCGACCACC
 ACCGTCCAAGTCTGAGCCGGATCAAACCTCGCCATTAATATGAAGTCAAGAAGTTCGTTGCTCATCTAA
 CTGTACAGCAATTGCTTACCATGTGGTATGAAAATCTCTCAGGCTTACGTCAACAGTCTATCGCTGTG
 AAATCCTGGCTGCTTTGGAGTCTCCATAGCCCTCCCTTTCTCGCCATAGCCTATTGGATTGCTCCGT
 GCAGACAAGTAGGACGAACCCCTGAGGACCCCTTTCATGAAGTTTGTAGCTCATGCAAGTTCTTTTACAAT
 CTTCTTGGGATTATTAGTTGTGAATGCATCTGACCGATTTGAAGGTGTTAAAACCCCTGCCAAACGAAACC
 TTCACAGACTACCCAAAACAAATCTTCAGAGTGA AAAACACACAGTTCTCCTGGACAGAAATGCTCATT
 TGAAGTGGTCTTAGGAATGATTTGGTCCGAATGCAAGGAAATCTGGGAGGAGGGCCACGGGAGTACGT
 GCTGCACTTGTGGAACCTGCTAGATTTCCGGATGCTGTCCATCTTCGTGGCTCCTTCACAGCACGCTTC
 ATGGCCTTCTGAAGGCCACGGAGGCACAGCTGTACGTGGACCAGCACGTGCAGGACGACACGCTGCACA
 ATGTCTCGCTCCGCCGGAAGTGGCATACTTCACCTACGCCAGGACAAGTGGTGGCCTTCAGACCCCTCA
 GATCATATCGGAAGGGCTCTACGCGATAGCCGTCTGTGCTGAGCTTCTCTCGCATTGCATACATTCTGCCA
 GCCAACGAGAGTTTTGGGCCCTGCAGATCTCGCTAGGGAGAAGTGTGAAAGATATCTTCAAGTTATGG
 TCAATTTTCATCATGGTATTTGTGGCCTTATGATTGGGATGTTAACCTGTACTTACTACCGAGGTGC
 CAAATACAACCCAGCGTTTACAACGGTTGAAGAAAGTTTTAAAACCTTTGTTTTGGTCCATATTCCGGCTTA
 TCTGAAGTAATCTCAGTGGTGTGAAATACGACCACAAATTCATCGAGAACATTGGCTACGTTCTCTACG
 GCGTTTATAACGTCAACATGGTGGTGTGTTGCTCAACATGCTAATAGCCATGATAAAACACTCCTATCA
 GGAAATGAGGAGGATGCAGATGTGGAATGGAAGTTCGCCCGAGCAAAACTCTGGCTGTCTTACTTTGAT
 GAAGGAAGAACTTACCTGCTCCTTTTAACTAGTGCCAAGTCTAAATCATTATTTATTATCTCATAATGA
 GAATCAAGATGTCCCTCATAAACTCTGCAAACTAAGGCCAAAAGCTGTGAAAATGACCTTGAATGGG
 CATGTGAATTCAAAATCAAGAAGACTCGCTACCAGGCTGGCATGAGGAATTCTGAAAATCTGACAGCA
 AATAACACTTTGAGCAAGCCACCAGATACCAGAAAATCATGAAACGGCTCATAAAAAGATACGTCTCTGA
 AAGCCCAGGTGGACAGAGAAAATGACGAAGTCAATGAAGGCGAGCTGAAGGAAATCAAGCAAGATATCTC
 CAGCCTGCGCTATGAGCTTCTGAGGAAAAATCTCAAGCTACTGGTGTGAGCTGGCAGACCTGATTCAACA
 CTCAGCGAGAAGTTTGGAAAGAAGCTTAAACAAAGACCACCTGAGGGTGAACAAGGGCAAAGACATT

ACGCGTACGCGGCCGCTCGAGCAGAAACTCATCTCAGAAGAGGATCTGGCAGCAATGATATCCTGGATT
 ACAAGGATGACGACGATAAGGTTTAA

Protein Sequence: >RC222755 representing NM_020389
 Red=Cloning site Green=Tags(s)

MLRNSTFKNMQRHHTLREKGRRQAIRGPAYMFNEKGTSLTPEEERFLDSAEYGNIPVVRKMLEESKTLN
 FNCVDYMGQNALQLAVGNEHLEVTELLKKNLARVGDALLLAISKGYVRIVEAILNHPAFAQQQRLTSL
 PLEQELRDDDFYAYDEDGTRFSDITPIILAAHCQEYEVHILLKLGARIERPHDYFCCKNECTEKQRKD
 SFSHSRMRMAYKGLASAAAYLSLSEDPVLTALEL SNELARLANIETEFKNDYRKL SMQCKDFVGVLDL
 CRDTEEVEAILNGDVFQVSDHHRPSLSRIKLAIKYEVKFFVAHPNCQQQLLTMWYENLSGLRQQSIAY
 KFLAVFGVSI GLPFLAIAYWIAPCSKLGRTLRSFPMKFVAHAVSFITFLGLLVNVASDRFEGVKTLPNET
 FTDYPKQIFRVKTTQFSWTEMLIMKWVLMGIWSECKEIWEEGPREYVHLWNLDFGMLSIFVASFTARF
 MAFLKATEAQLYVDQHVQDDTLHNVS LPPEVAYFTYARDKWVWSDPQII SEGLYAI AVVLSFSRIAYILP
 ANESFGPLQISLGRVTDIFKFMVIFIMVFVAFMIGMFNL SYRGA KYNPAFTTVEESFKTLFWSIFGL
 SEVISVVLKYDHKFIENIGYVLYGVYVNTMVVLLNMLIAMINNSYQEI EEDADVEWK FARAKLWLSYFD
 EGRTLPAFNLVPSPKSFYYLIMRIKMLIKLCKSKAKSCENDLEMGLNSKFKKTRYQAGMRNSENLT
 NNTLSKPTRYQIMKRLIKRYVLKAQVDRENDEVNEGELKEIKQDISSLRYELLEEK SQATGELADLIQQ
 LSEKFGKLNKDHRLRVNKGKDI

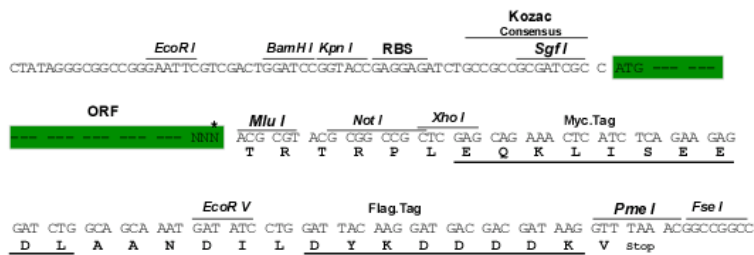
TRTRPLEQKLISEEDLAANDILDYKDDDDKV

Chromatograms: https://cdn.origene.com/chromatograms/mg4820_e01.zip

Restriction Sites: SgfI-MluI

Cloning Scheme:

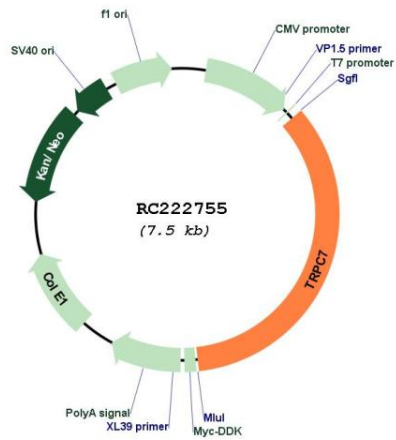
Cloning sites used for ORF Shuttling:



* The last codon before the Stop codon of the ORF

ACCN:	NM_020389
ORF Size:	2586 bp
OTI Disclaimer:	The molecular sequence of this clone aligns with the gene accession number as a point of reference only. However, individual transcript sequences of the same gene can differ through naturally occurring variations (e.g. polymorphisms), each with its own valid existence. This clone is substantially in agreement with the reference, but a complete review of all prevailing variants is recommended prior to use. More info
OTI Annotation:	This clone was engineered to express the complete ORF with an expression tag. Expression varies depending on the nature of the gene.
Components:	The ORF clone is ion-exchange column purified and shipped in a 2D barcoded Matrix tube containing 10ug of transfection-ready, dried plasmid DNA (reconstitute with 100 ul of water).
Reconstitution Method:	<ol style="list-style-type: none">1. Centrifuge at 5,000xg for 5min.2. Carefully open the tube and add 100ul of sterile water to dissolve the DNA.3. Close the tube and incubate for 10 minutes at room temperature.4. Briefly vortex the tube and then do a quick spin (less than 5000xg) to concentrate the liquid at the bottom.5. Store the suspended plasmid at -20°C. The DNA is stable for at least one year from date of shipping when stored at -20°C.
RefSeq:	NM_020389.3
RefSeq Size:	2589 bp
RefSeq ORF:	2589 bp
Locus ID:	57113
UniProt ID:	Q9HCX4
Cytogenetics:	5q31.1
Domains:	ANK, ion_trans
Protein Families:	Druggable Genome, Ion Channels: Transient receptor potential, Transmembrane
MW:	99.4 kDa
Gene Summary:	Thought to form a receptor-activated non-selective calcium permeant cation channel. Probably is operated by a phosphatidylinositol second messenger system activated by receptor tyrosine kinases or G-protein coupled receptors. Activated by diacylglycerol (DAG) (By similarity). May also be activated by intracellular calcium store depletion. [UniProtKB/Swiss-Prot Function]

Product images:



Circular map for RC222755