

## Product datasheet for **RC222724**

### **CELF2 (NM\_001083591) Human Tagged ORF Clone**

#### **Product data:**

Product Type:	Expression Plasmids
Product Name:	CELF2 (NM_001083591) Human Tagged ORF Clone
Tag:	Myc-DDK
Symbol:	CELF2
Synonyms:	BRUNOL3; CELF-2; CUG-BP2; CUGBP2; ETR-3; ETR3; NAPOR
Mammalian Cell Selection:	Neomycin
Vector:	pCMV6-Entry (PS100001)
E. coli Selection:	Kanamycin (25 ug/mL)



[View online »](#)

**ORF Nucleotide Sequence:**

>RC222724 representing NM\_001083591  
 Red=Cloning site Blue=ORF Green=Tags(s)

TTTTGTAATACGACTCACTATAGGGCGGCCGGAATTCGTCGACTGGATCCGGTACCGAGGAGATCTGCC  
 GCC**CGATCGCC**

ATGAACGGAGCTTTGGATCACTCAGACCAACCAGACCCAGATGCCATTAAGATGTTTGTCCGACAGATCC  
 CCCGGTCATGGTCGAAAAGGAGCTGAAAGAACTTTTTGAGCCTTACGGAGCCGTCTACCAGATCAACGT  
 CCTCCGGGACCGGAGTCAGAACCCTCCGCAGAGTAAAGGTTGTTGTTTCGTAACATTTTATAACAAGAAAA  
 GCTGCACTTGAGGCCAGAATGCACTGCACAATATTAACCTTTACCTGGGATGCATCATCCATTCCAGA  
 TGAACCTGCAGATAGTAAAAGTCCAACGCTGTGGAAGACAGAAAATTGTTTCATAGGAATGGTATCGAA  
 GAAATGTAATGAGAACGACATCAGGGTATGTTCTCTCCATTTGGCCAGATAGAAGAATGCCGGATCCTC  
 CGGGGACCTGATGGGCTGAGTCGAGGCTGTGCGTTTGTACATTTTCTACAAGGGCAATGGCACAGAAATG  
 CAATCAAAGCCATGCATCAGTCTCAGACCATGGAGGGCTGCTCTTACCTATCGTGGTGAAGTTTGTCTGA  
 CACTCAGAAGGACAAAGAGCAAAGGCGCCTCCAGCAGCAGCTCGCTCAGCAGATGCAGCAGCTCAACACT  
 GCCACCTGGGGAACTGACAGGGCTGGGCGGACTGACCCACAGTATCTGGCGCTCTGCAGCAGGCCA  
 CCTCTCCAGCAACCTGGGTGCGTTTCAGCGCATTCAACAATGGCAGGCATGAATGCTTTACAGTTGCA  
 GAACCTGGCGACGCTGGCTGCTGCTGCAGCTGCGGCCAGACCTCAGCCACCAGCAACATGCAACCCCT  
 CTCTTACCACGAGCAGCGCCCTGGGAGCCCTCAGAGTCCCCTGGTGGCTTCAACCCCAACTCCACTG  
 CTGGTGCAGCCATGAACCTCTTGACCTCTCTCGGGACTCTGCAAGGACTGGCTGGAGCCACTGTTGGACT  
 GAATAATATTAATGCACTAGCAGTACCATCAACAGTATGGCGGCTCTGAATGGAGGACTTGGCGCCACA  
 GGCTTGACGAATGGCAGGCTGGCACCATGGACGCCCTCACCCAGGCCTACTCAGGAATTAACAGTACG  
 CAGCCCGCGCTGCCACTCTGTACGCCAGAGCCTGCTCAGCAGCAGAGCGCTGCAGCAGCCAGAA  
 GGAAGGTCAGAGGGGGCAAACCTCTTTATTTACCACCTTCCACAGGAATTTGGAGACCAGGACATTTCTG  
 CAGATGTTTCATGCCTTTTGGAAATGTTATCTCTGCTAAAGTCTTTCATTGACAAACAGACCAATCTGAGCA  
 AGTGCTTTGGTTTGTAGCTACGACAATCCAGTCTCTGCACAAGCTGCTATCCAAGCTATGAATGGCTT  
 TCAGATCGGCATGAAACGCTTGAAGGTGCAGCTGAAGCGTTCCAAAAACGACAGCAAACCTTAC

**ACCGTACGCGGCCGCTCGAGCAGAAACTCATCTCAGAAGAGGATCTGGCAGCAATGATATCTGGATT**  
**ACAAGGATGACGACGATAAGGTTTAA**

**Protein Sequence:**

>RC222724 representing NM\_001083591  
 Red=Cloning site Green=Tags(s)

MNGALDHSQDPDPDAIKMFVQIPRSWSEKELKELFEPYGAVYQINVLRDRSQNPPQSKGCCFVTFYTRK  
 AALEAQNALHNIKTLPGMHPIQMKPADSEKSNAVEDRKLFIGMVSKKNENDIRVMFSPFGQIEECRIL  
 RGPDGLSRGCAFVTFSTRAMAQNAIKAMHQSQTMEGSSPIVVKFADTQKDKERRLQQQLAQMQQLNT  
 ATWGNLTGLGGLTPQYLALLQQATSSNLGAFSGIQMAGMNALQLQNLATLAAAAAAQTSATSTNANP  
 LSTSSALGALTSPVAASTPNSTAGAAMNSLTSLGTLQGLAGATVGLNNINALAGTINSMAALNGGLGAT  
 GLTNGTAGTMDALTQAYSIGIQYAAAALPTLYSQLLQQQSAAGSQKEGPEGANLFIYHLPQEFGDQDIL  
 QMFMPFGNVISAKVFIKQTNLSKCFGFVSYDNPVSAQAAIQAMNGFQIGMKRLKVLKRSKNDKSKPY

**TRTRPLEQKLISEEDLAANDILDYKDDDDKV**

**Chromatograms:**

[https://cdn.origene.com/chromatograms/ja1396\\_a07.zip](https://cdn.origene.com/chromatograms/ja1396_a07.zip)

**Restriction Sites:**

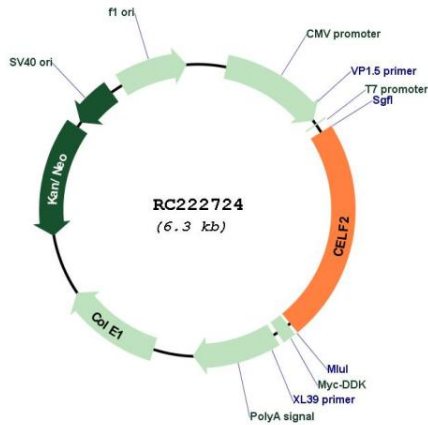
Sgfl-MluI



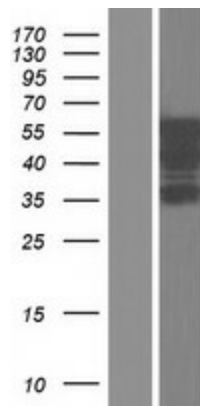
**MW:** 51.9 kDa

**Gene Summary:** Members of the CELF/BRUNOL protein family contain two N-terminal RNA recognition motif (RRM) domains, one C-terminal RRM domain, and a divergent segment of 160-230 aa between the second and third RRM domains. Members of this protein family regulate pre-mRNA alternative splicing and may also be involved in mRNA editing, and translation. Alternative splicing results in multiple transcript variants encoding different isoforms. [provided by RefSeq, Jul 2008]

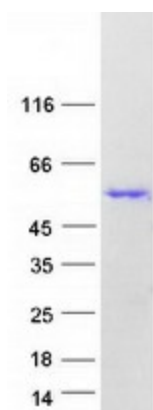
**Product images:**



Circular map for RC222724



Western blot validation of overexpression lysate (Cat# [LY421224]) using anti-DDK antibody (Cat# [TA50011-100]). Left: Cell lysates from untransfected HEK293T cells; Right: Cell lysates from HEK293T cells transfected with RC222724 using transfection reagent MegaTran 2.0 (Cat# [TT210002]).



Coomassie blue staining of purified CELF2 protein (Cat# [TP322724]). The protein was produced from HEK293T cells transfected with CELF2 cDNA clone (Cat# RC222724) using MegaTran 2.0 (Cat# [TT210002]).