

Product datasheet for **RC222711**

CysLT2 (CYSLTR2) (NM_020377) Human Tagged ORF Clone

Product data:

Product Type:	Expression Plasmids
Product Name:	CysLT2 (CYSLTR2) (NM_020377) Human Tagged ORF Clone
Tag:	Myc-DDK
Symbol:	CysLT2
Synonyms:	CYSLT2; CYSLT2R; GPCR21; HG57; hGPCR21; HPN321; KPG_011; PSEC0146
Mammalian Cell Selection:	Neomycin
Vector:	pCMV6-Entry (PS100001)
E. coli Selection:	Kanamycin (25 ug/mL)
ORF Nucleotide Sequence:	>RC222711 representing NM_020377 Red=Cloning site Blue=ORF Green=Tags(s)

TTTTGTAATACGACTCACTATAGGGCGGCCGGAATTCGTCGACTGGATCCGGTACCGAGGAGATCTGCC
GCC**CGATCGCC**

ATGGAGAGAAAATTTATGTCCTTGCAACCATCCATCTCCGTATCAGAAATGGAACCAAATGGCACCTTCA
GCAATAACAACAGCAGGAACTGCACAATTGAAACTTCAAGAGAGAATTTTCCCAATTGTATATCTGAT
AATATTTTCTGGGGAGTCTTGGGAAATGGTTGCCATATATGTTTTCTGCAGCCTTATAAGAAGTCC
ACATCTGTGAACGTTTTTCATGCTAAATCGGCCATTTAGATCTCCTGTTTATAAGCAGCCTTCCCTTCA
GGGCTGACTATTATCTTAGAGGCTCCAATTGGATATTTGGAGACCTGGCCTGCAGGATTATGCTTATTC
CTTGATGTCAACATGTACAGCAGTATTTATTTCTGACCGTGCTGAGTGTGTGCGTTTTCTGGCAATG
GTTCAACCCCTTTTCGGCTTCTGCATGTCAACAGCATCAGGAGTGCCTGGATCCTCTGTGGGATCATATGGA
TCCTTATCATGGCTTCTCAATAATGCTCCTGGACAGTGGCTCTGAGCAGAACGGCAGTGTACATCATG
CTTAGAGCTGAATCTCTATAAAATTGCTAAGCTGCAGACCATGAACTATATTGCCTTGGTGGTGGCTGC
CTGCTGCCATTTTACACTCAGCATCTGTTATCTGCTGATCATTGCGGTTCTGTTAAAAGTGGAGGTCC
CAGAATCGGGGCTGCGGGTTTCTCACAGGAAGGCACTGACCACCATCATCACCTTGATCATCTTCTT
CTTGTTCTTCTGCCCTATCACACTGAGGACCGTCCACTTGACGACATGAAAAGTGGGTTTATGCAA
GACAGACTGCATAAAGCTTTGGTTATCACACTGGCCTTGGCAGCAGCCAATGCCTGCTTCAATCCTCTGC
TCTATTACTTTGCTGGGAGAAATTTAAGGACAGACTAAAGTCTGCACTCAGAAAAGGCCATCCACAGAA
GGCAAAGACAAAGTGTGTTTTCCCTGTTAGTGTGTGGTTGAGAAAAGGAAACAAGAGTA

ACGCGTACGCGGCCGCTCGAGCAGAAACTCATCTCAGAAGAGGATCTGGCAGCAAATGATATCCTGGATT
ACAAGGATGACGACGATAAGGTTTAA



[View online »](#)

Protein Sequence: >RC222711 representing NM_020377
 Red=Cloning site Green=Tags(s)

MERKFMSLQPSISVSEMEPNGTFSNNNSRNCTIENFKREFFPIVYLIIFWGVLGNGLSIYVFLQPYKKS
 TSVNVFMLNLAISDLLFISTLPFRADYYLRGSNWIFGDLACRIMSYSYLVNMYSSIIYFLTVLSVVRFLAM
 VHPFRLHVTIRSASWILCGIIWILIMASSIMLLDSGSEQNGSVTSCELELNLYKIAKLQTMNYIALVVG
 LLPFFTLISICYLLIIRVLLKVEVPESGLRVSHRKALTTIIITLIIFFLCFLPYHTLRTVHLTTWKVGLCK
 DRHLKALVITLALAAANACFNPLLYYFAGENFKDRLKSALRKGHPOKAKTKCVFPVSVWLRKETRV

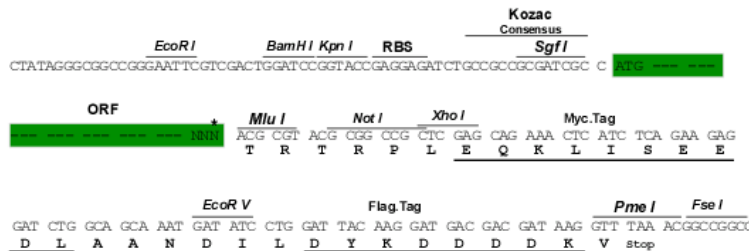
TRTRPLEQKLISEEDLAANDILDYKDDDDKV

Chromatograms: https://cdn.origene.com/chromatograms/mk6282_b05.zip

Restriction Sites: SgfI-MluI

Cloning Scheme:

Cloning sites used for ORF Shutting:



* The last codon before the Stop codon of the ORF

ACCN: NM_020377

ORF Size: 1038 bp

OTI Disclaimer: The molecular sequence of this clone aligns with the gene accession number as a point of reference only. However, individual transcript sequences of the same gene can differ through naturally occurring variations (e.g. polymorphisms), each with its own valid existence. This clone is substantially in agreement with the reference, but a complete review of all prevailing variants is recommended prior to use. [More info](#)

OTI Annotation: This clone was engineered to express the complete ORF with an expression tag. Expression varies depending on the nature of the gene.

Components: The ORF clone is ion-exchange column purified and shipped in a 2D barcoded Matrix tube containing 10ug of transfection-ready, dried plasmid DNA (reconstitute with 100 ul of water).

Reconstitution Method:

1. Centrifuge at 5,000xg for 5min.
2. Carefully open the tube and add 100ul of sterile water to dissolve the DNA.
3. Close the tube and incubate for 10 minutes at room temperature.
4. Briefly vortex the tube and then do a quick spin (less than 5000xg) to concentrate the liquid at the bottom.
5. Store the suspended plasmid at -20°C. The DNA is stable for at least one year from date of shipping when stored at -20°C.

RefSeq: [NM_020377.5](#)

RefSeq Size: 2548 bp

RefSeq ORF: 1041 bp

Locus ID: 57105

UniProt ID: [Q9NS75](#)

Cytogenetics: 13q14.2

Domains: 7tm_1

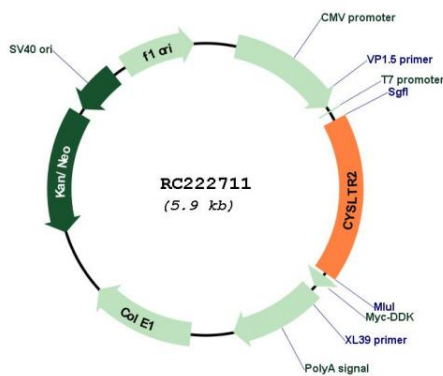
Protein Families: Druggable Genome, GPCR, Transmembrane

Protein Pathways: Calcium signaling pathway, Neuroactive ligand-receptor interaction

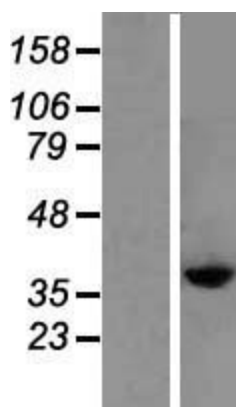
MW: 39.5 kDa

Gene Summary: The cysteinyl leukotrienes LTC₄, LTD₄, and LTE₄ are important mediators of human bronchial asthma. Pharmacologic studies have determined that cysteinyl leukotrienes activate at least 2 receptors, the protein encoded by this gene and CYSLTR1. This encoded receptor is a member of the superfamily of G protein-coupled receptors. It seems to play a major role in endocrine and cardiovascular systems. [provided by RefSeq, Jul 2008]

Product images:



Circular map for RC222711



Western blot validation of overexpression lysate (Cat# [LY412509]) using anti-DDK antibody (Cat# [TA50011-100]). Left: Cell lysates from untransfected HEK293T cells; Right: Cell lysates from HEK293T cells transfected with RC222711 using transfection reagent MegaTran 2.0 (Cat# [TT210002]).