

Product datasheet for **RC222700**

CBX2 (NM_005189) Human Tagged ORF Clone

Product data:

| | |
|---------------------------|---|
| Product Type: | Expression Plasmids |
| Product Name: | CBX2 (NM_005189) Human Tagged ORF Clone |
| Tag: | Myc-DDK |
| Symbol: | CBX2 |
| Synonyms: | CDCA6; M33; SRXY5 |
| Mammalian Cell Selection: | Neomycin |
| Vector: | pCMV6-Entry (PS100001) |
| E. coli Selection: | Kanamycin (25 ug/mL) |



[View online »](#)

ORF Nucleotide Sequence:

>RC222700 representing NM_005189
 Red=Cloning site Blue=ORF Green=Tags(s)

TTTTGTAATACGACTCACTATAGGGCGGCCGGAATTCGTCGACTGGATCCGGTACCGAGGAGATCTGCC
 GCC**CGGATCGCC**

ATGGAGGAGCTGAGCAGCGTGGGCGAGCAGGTCTTCGCCGCCAGTGCATCCTGAGCAAGCGGCTCCGCA
 AGGGCAAGCTGGAGTACCTGGTCAAGTGGCGCGCTGGTCTCCAACATAACAGCTGGGAGCCGAGGA
 GAACATCCTGGACCCGAGGCTGCTCCTGGCCTCCAGAAGAAGGAACATGAGAAGGAGGTGAGAACCGG
 AAGAGAGGCAAGAGGCCGAGAGGCCGCAAGGAAGCTACTGCCATGTCTCCTGCAGCCGGCGTCCA
 AGCTCAAGGAACCCGATGCTCCCTCCAATCCAAGTCCAGCAGTTCCTCCTTCTCCACGTATCCTC
 CTCTTCTCAGATGAAGAGGATGACAGTGACTTAGATGCTAAGAGGGTCCCCGGGGCCGCGAGACCCAC
 CCAGTGCCGCAGAAGAAGGCCAGATCCTGGTGGCCAAACCCGAGCTGAAGGATCCCATCCGGAAGAAGC
 GGGGACGAAAGCCCTGCCCCAGAGCAAAGGCAACCCGAAGACCCGTGAGCCTGGCCAAGGTGCTGAA
 GACCGCCCGAAGGATCTGGGGGCCCGCCAGCAAGCTGCCCTCCACTCAGCGCCCGTTGCAGGC
 CTGGCAGCTCTGAAGGCCACGCCAAGGAGCCTGTGGCGGCCAGTGCATGGCCACCCAGAGAACC
 TGGCCAGCCTAATGAAGGGCATGGCCAGTAGCCCCGGCCGGGTGGCATCAGCTGGCAGAGCTCCATCGT
 GCACTACATGAACCGGATGACCCAGAGCCAGGCCAGGCTGCCAGCAGGTTGGCGCTGAAGGCCAGGCC
 ACCAACAGTGGCGCTCGGGCTGGACCTGAAGGTGAGGACGCAGAAAGGGGAGCTGGGAATGAGCCCTC
 CAGGAAGCAAATCCCGAAGGCCCCAGCGTGGGGCTGTGGAGCAGAAAGTGGGAAACACAGGGGGCCC
 CCCGCACCCCATGGTGCCAGCAGGGTGCCTGCTGGGTGCCAGGCCCCAGCCAGCACCCACCCAGGAG
 CTGAGCCTCCAGTCTTGACTTGACAGTGTCAAGAATGGCATGCCCGGGTGGTCTCCTTGCCCGCC
 ACGCCACCGCCACCAAGGTGTCCCGGCCACCAACCCAGCCCTGGGAAGGGCACTGGGAGTGGCCTCAT
 TGGGGCCAGCGGGGCCACCATGCCACCCAGCACAAAGTGAAGAAGCTGGCTTCAGAGCAGTGGCG
 CCACCCACCCCTGCCAGCAAGAGGGACTGTGTCAGGGCAGTGTACCCCAAGTGGGCAGGAGAGCCGCA
 CAGCCCCCGAGAAGCCCGCAAGGCGGCCACACTGCCAGAGATGAGCGCAGGTGAGGAGAGTAGCAGCTC
 GGACTCCGACCCCGACTCCGCTCGCGCCAGCACTGGACAGAACCCTCAGTGTCCGTTCCAGACCAGC
 CAGGACTGGAAGCCACCCGACGCTCATCGAGCAGTATTTGTCACCGACGTCCTGCCAACCTCATCA
 CCGTCACAGTGAAGGAGTCTCCACCCAGCGTGGCTTCTTCAACCTGAGGCATTAC

ACGCGTACGCGGCCGCTCGAGCAGAACTCATCTCAGAAGAGGATCTGGCAGCAAATGATATCCTGGATT
 ACAAGGATGACGACGATAAGGTTTAA

Protein Sequence:

>RC222700 representing NM_005189
 Red=Cloning site Green=Tags(s)

MEELSSVGEQVFAAECILSKRLRKGKLEYLVKWRGWSSKHNSWEPEENILDPRLLLAFAQKKEHEKEVQNR
 KRGRPRGRPRKLTAMSSCSRRSKLKEPDAPSKSKSSSSSSSTSSSSSDEEDSDLDKRGPRGRETH
 PVPQKKAQILVAKPELKDPIRKKRGRKPLPPEQKATRRPVSLAKVLKTARKDLGAPASKLPPPLSAPVAG
 LAALKAHAKEACGGPSAMATPENLASLMKGMASPPGRGGISWQSSIVHYMNRMTQSQQAASRLALKAQA
 TNKCGLLDLKVRTQKGE LGMSPGSKIPKAPSGGAVEQKVGNTGGPPHGHASRVPAGCPGPQAPTQE
 LSLQVLDLQSVKNGMPGVLLARHATATKGVPATNPAPGKGTGSLIGASGATMPTDTSKSEKLASRAVA
 PPTPASKRDCVKGSATPSGQESRTAPGEARKAATLPEMSAGESSSSSDPDSASPPSTGQNPSSVSQTS
 QDWKPTRSLIEHVFVTDVTANLITVTVKESPTSVGFFNLRHY

TRTRPLEQKLISEEDLAANDILDYKDDDDKV

Chromatograms:

https://cdn.origene.com/chromatograms/mg4628_e01.zip

Restriction Sites:

Sgfl-Mlul

Cloning Scheme:


ACCN: NM_005189

ORF Size: 1596 bp

OTI Disclaimer: The molecular sequence of this clone aligns with the gene accession number as a point of reference only. However, individual transcript sequences of the same gene can differ through naturally occurring variations (e.g. polymorphisms), each with its own valid existence. This clone is substantially in agreement with the reference, but a complete review of all prevailing variants is recommended prior to use. [More info](#)

OTI Annotation: This clone was engineered to express the complete ORF with an expression tag. Expression varies depending on the nature of the gene.

Components: The ORF clone is ion-exchange column purified and shipped in a 2D barcoded Matrix tube containing 10ug of transfection-ready, dried plasmid DNA (reconstitute with 100 ul of water).

- Reconstitution Method:**
1. Centrifuge at 5,000xg for 5min.
 2. Carefully open the tube and add 100ul of sterile water to dissolve the DNA.
 3. Close the tube and incubate for 10 minutes at room temperature.
 4. Briefly vortex the tube and then do a quick spin (less than 5000xg) to concentrate the liquid at the bottom.
 5. Store the suspended plasmid at -20°C. The DNA is stable for at least one year from date of shipping when stored at -20°C.

RefSeq: [NM_005189.3](#)

RefSeq Size: 4192 bp

RefSeq ORF: 1599 bp

Locus ID: 84733

UniProt ID: [Q14781](#)

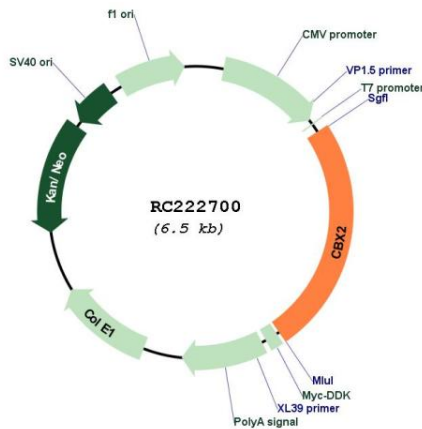
Cytogenetics: 17q25.3

Protein Families: Transcription Factors

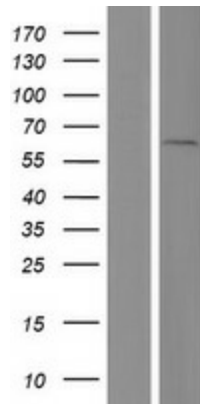
MW: 55.9 kDa

Gene Summary: This gene encodes a component of the polycomb multiprotein complex, which is required to maintain the transcriptionally repressive state of many genes throughout development via chromatin remodeling and modification of histones. Disruption of this gene in mice results in male-to-female gonadal sex reversal. Mutations in this gene are also associated with gonadal dysgenesis in humans. Alternatively spliced transcript variants encoding different isoforms have been noted for this gene.[provided by RefSeq, Mar 2010]

Product images:



Circular map for RC222700



Western blot validation of overexpression lysate (Cat# [LY417456]) using anti-DDK antibody (Cat# [TA50011-100]). Left: Cell lysates from untransfected HEK293T cells; Right: Cell lysates from HEK293T cells transfected with RC222700 using transfection reagent MegaTran 2.0 (Cat# [TT210002]).