

Product datasheet for **RC222685**

LPLUNC3 (BPIFB3) (NM_182658) Human Tagged ORF Clone

Product data:

Product Type:	Expression Plasmids
Product Name:	LPLUNC3 (BPIFB3) (NM_182658) Human Tagged ORF Clone
Tag:	Myc-DDK
Symbol:	LPLUNC3
Synonyms:	C20orf185; LPLUNC3; RYA3
Mammalian Cell Selection:	Neomycin
Vector:	pCMV6-Entry (PS100001)
E. coli Selection:	Kanamycin (25 ug/mL)



[View online »](#)

ORF Nucleotide Sequence:

>RC222685 ORF sequence
 Red=Cloning site Blue=ORF Green=Tags(s)

TTTTGTAATACGACTCACTATAGGGCGGCCGGAATTCGTCGACTGGATCCGGTACCGAGGAGATCTGCC
 GCC**CGCATCGCC**

ATGCAGCCAGTCATGCTGCCCTGTGGTCCCTGCTTCTGCTCTGGGGCTGGCGACTCCATGCCAGGAGC
 TGCTAGAGACGGTGGGCACGCTCGCTCGGATTGACAAGGATGAACTCGGCAAAGCCATCCAGAAGCACT
 GGTGGGGAGCCATTCTGCAGAATGTGCTGGGATCGGTCACAGCTGTGAACCGGGGCTCTTGGGCTCA
 GGAGGGCTGCTTGGAGGAGGCGGCTTGTGGGCCACGGAGGGTTTTTGGCGTTGTGAGGAGCTCTCTG
 GTCTGAAGATTGAGGAGCTCACGCTGCCAAAGGTGTTGCTGAAGCTGCTGCCGGGATTTGGGGTGCAGCT
 GAGCCTGCACACCAAAGTGGGCATGCATTGCTCTGGCCCCCTTGGTGGCCTTCTGCAGCTGGCTGCGGAG
 GTGAACGTGACATCGCGGTGGCGCTGGCCGTGAGCTCAAGGGGCACACCCATCCTTATCCTCAAGCGCT
 GCAGCACGCTCCTGGGCCACATCAGCCTGTTCTCAGGGCTGCTGCCACACCACTCTTGGGGTCTGGA
 ACAGATGCTCTTCAAGGTGCTTCCGGGACTGCTGTGCCCGTGGTGGACAGTGTGCTGGGTGTTGGAAT
 GAGCTCCTGGGGCTGTGCTGGGCTGGTGTCCCTTGGGGCTCTTGGGTCCGTGGAATCTCTCTGGCCA
 CATTGCCTCTCATCTCCAACAGTACATAGAAGTGGACATCAACCCTATCGTGAAGAGTGTAGCTGGTGA
 TATCATTGACTTCCCAAGTCCCGTGGCCAGCCAAGGTGCCCCCAAGAAGGACCACACATCCAGGTG
 ATGGTGCCACTGTACCTTTCAACACCATGTTGGACTCCTGCAGACCAACGGCGCCCTCGACATGGACA
 TCACCCCTGAGCTGGTCCCAGCGATGTCCACTGACAACTACAGACCTGGCAGCTTTGCTCCCTGAGGC
 CCTGGGAAGCTGCCCTGCACCAGCAACTCCTACTGTTCTGCGGGTGGAGGAGCTCCACGGTCACA
 CTCCACAACAAGAAGGCTTGGTCTCCCTCCAGCCAACATCCATGTGCTGTTCTATGCTCCCTAAGGGGA
 CCCCTGAATCCCCTTTGAGCTGAACTCCGTGACTGCTGCGTGGCCAGCTGGCTCCCTCGGCTACCAA
 GCTGCACATCTCCCTGTCCCTGGAACGGCTCAGTGTCAAGGTGGCTCCTCCTTTACCCATGCCTTTGAC
 GGATCGCGTTTAGAAGAATGGCTCAGCCATGTGGTGGGGCAGTGTATGCACAAAGCTTAACTGGCCC
 TGGATGTTGGAATTTCCCTGCCTAAGGTTCTTAATATCAATTTTTCCAATTCAGTCTGGAGATCGTAGA
 GAATGCTGTTGTGCTGACCGTGGCATCC

ACGCGTACGCGGCCGCTCGAGCAGAACTCATCTCAGAAGAGGATCTGGCAGCAAATGATATCCTGGATT
 ACAAGGATGACGACGATAAGGTTTAA

Protein Sequence:

>RC222685 protein sequence
 Red=Cloning site Green=Tags(s)

MQPVMALWLLLLWGLATPCQELLETVGLARIDKDELGKAIQNSLVGEPILQNVLGSVTAVNRRLLGS
 GLLGGGGLLGHGGVFGVVEELSGLKIEELTLPKVLLKLLPGFGVQLSLHTKVMHCSGPLGLLQLAAE
 VNVTSRVALAVSRGTPILILKRCSTLLGHISLFSGLLPTPLFGVVEQMLFKVLPGLLCPVVDVSVLGVN
 ELLGAVLGLVSLGALGSVEFLATLPLISNQYIELDINPIVKSVAAGDIIDFPKSRAPAKVPPKDHSTQV
 MVPLYLFNTMFGLLQTNGALDMDITPELVPSDVPLTTTDLAALLPEALGKPLHQQLLLFLRVREAPTVT
 LHNKKALVSLPANIHVLFYVPKGTPESLFELNSVMTVRAQLAPSATKLHISLSLERLSVKVASSFTAFD
 GSRLEEWL SHVVGAVYAPKLNVALDVGISLPKVLNINFSNSVLEIVENAVVLTVAS

TRTRPLEQKLISEEDLAANDILDYKDDDDKV

Chromatograms:

https://cdn.origene.com/chromatograms/mk6461_e02.zip

Restriction Sites:

Sgfl-MluI

Cloning Scheme:


ACCN: NM_182658

ORF Size: 1428 bp

OTI Disclaimer: The molecular sequence of this clone aligns with the gene accession number as a point of reference only. However, individual transcript sequences of the same gene can differ through naturally occurring variations (e.g. polymorphisms), each with its own valid existence. This clone is substantially in agreement with the reference, but a complete review of all prevailing variants is recommended prior to use. [More info](#)

OTI Annotation: This clone was engineered to express the complete ORF with an expression tag. Expression varies depending on the nature of the gene.

Components: The ORF clone is ion-exchange column purified and shipped in a 2D barcoded Matrix tube containing 10ug of transfection-ready, dried plasmid DNA (reconstitute with 100 ul of water).

- Reconstitution Method:**
1. Centrifuge at 5,000xg for 5min.
 2. Carefully open the tube and add 100ul of sterile water to dissolve the DNA.
 3. Close the tube and incubate for 10 minutes at room temperature.
 4. Briefly vortex the tube and then do a quick spin (less than 5000xg) to concentrate the liquid at the bottom.
 5. Store the suspended plasmid at -20°C. The DNA is stable for at least one year from date of shipping when stored at -20°C.

Note: Plasmids are not sterile. For experiments where strict sterility is required, filtration with 0.22um filter is required.

RefSeq: [NM_182658.3](#)

RefSeq Size: 1454 bp

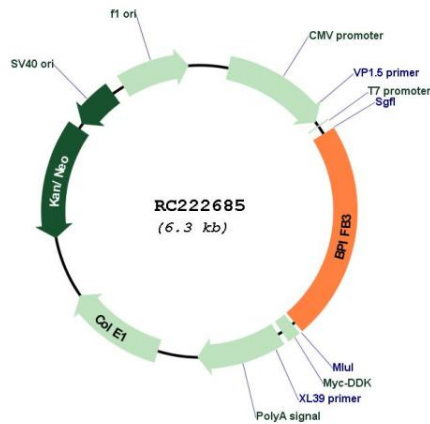
RefSeq ORF: 1431 bp

Locus ID: 359710

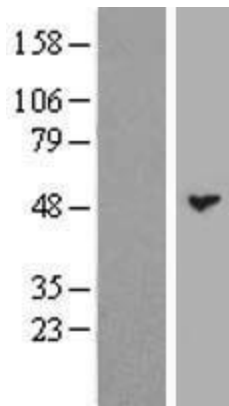
UniProt ID: [P59826](#)
Cytogenetics: 20q11.21
Protein Families: Druggable Genome, Secreted Protein
MW: 50.4 kDa

Gene Summary: May have the capacity to recognize and bind specific classes of odorants. May act as a carrier molecule, transporting odorants across the mucus layer to access receptor sites. May serve as a primary defense mechanism by recognizing and removing potentially harmful odorants or pathogenic microorganisms from the mucosa or clearing excess odorant from mucus to enable new odorant stimuli to be received (By similarity).[UniProtKB/Swiss-Prot Function]

Product images:



Circular map for RC222685



Western blot validation of overexpression lysate (Cat# [LY405434]) using anti-DDK antibody (Cat# [TA50011-100]). Left: Cell lysates from untransfected HEK293T cells; Right: Cell lysates from HEK293T cells transfected with RC222685 using transfection reagent MegaTran 2.0 (Cat# [TT210002]).