

Product datasheet for **RC222676**

KRTHA2 (KRT32) (NM_002278) Human Tagged ORF Clone

Product data:

Product Type:	Expression Plasmids
Product Name:	KRTHA2 (KRT32) (NM_002278) Human Tagged ORF Clone
Tag:	Myc-DDK
Symbol:	KRTHA2
Synonyms:	HA2; hHa2; HKA2; KRTHA2
Mammalian Cell Selection:	Neomycin
Vector:	pCMV6-Entry (PS100001)
E. coli Selection:	Kanamycin (25 ug/mL)



[View online »](#)

ORF Nucleotide Sequence:

>RC222676 representing NM_002278
 Red=Cloning site Blue=ORF Green=Tags(s)

TTTTGTAATACGACTCACTATAGGGCGGCCGGAATTCGTCGACTGGATCCGGTACCGAGGAGATCTGCC
 GCC**CGGATCGCC**

ATGACATCCTCCTGCTGTGTACCAACAACTTGAAGCCTCTCTCAAGAGCTGCCCCGGCCTGCCTCGG
 TCTGTTCCAGCGCGTGAAGTCCGGCCTGAGCTGTGCCTGGGCTATGTCTGCCAGCCCATGGCATGCCT
 GCCTTCGGTCTGCCTGCCACCACTTCCGGCCAGCCAGCTGCCTCTCCAAAACCTATCTATCCAGTTCC
 TGCCAGGCAGCCAGTGGCATCTCCGGCTCCATGGGCCCGGCAGCTGGTACAGCGAAGGGCCTTCAATG
 GCAATGAGAAGGAAACCATGCAGTTCCTTAACGACCGCCTGGCCAGTACCTGACGAGGGTGCAGCAGT
 GGAGCAGGAGAATGCGGAGCTGGAGAGCAGGATCCAAGAGGCCTCTCACTCCAGGTGCTCACCATGACT
 CCTGACTACCAGTCTCATTTAGGACATTGAGGAGCTCCAGCAGAAGATTCTGTGTACCAAGGCAGAGA
 ATGCCAGGATGGTTGTGAACATTGATAATGCCAACTGGCTGCCGATGACTTCAGGGCCAAGTACGAGGC
 AGAGCTGGCCATCGGCAGCTGGTGGAGGCCGACATCAATGGCCTGCGCAGGATCCTGGATGATCTCACT
 CTGTGCAAGGCTGACCTGGAGGCCAGGTTGAGTCCCTGAAGGAGGAGCTGATGTGCCTCAAAAAGAACC
 ATGAGGAGGAAGTCGGTCCCTTCGATGCCAGCTTGGGGACCGCCTTAACATCGAGGTGGACGCTGCACC
 CCCGGTGGACCTGACCAGGGTGTGGAGGAGATGCGGTGTGAGTACGAGGCCATGGTGGAGGCCAACCGC
 AGGGACGTGGAGGAATGGTTCAATATGCAGATGGAGGAGCTTAACCAACAGGTGGCCACAAGCTCTGAGC
 AGCTTCAGAACTACCAGTCAACATCATTGACCTGAGACGCACGGTCAACACGCTGGAGATCGAGCTGCA
 GGCCACAGCAGCCTGAGGGACTCCCTGGAAAACACGCTGACGGAGAGTGGAGGCCGCTACAGCTCCAG
 CTGGCCAGATGCAGTGCATGATACCAACGTTGAGGCCAGCTGGCTGAGATCCGGGCTGACCTGGAGC
 GGCAGAACAGGAGTACCAGGTGCTGCTGGAGCTCCGGGCCCGCTGGAGGGCAGATCAACACGTACCG
 GAGCCTGCTGGAGAACGAGGACTGCAAGCTGCCCTGTAACCCATGCTCCACTCCTTCTGCAACCACTGT
 GTGCCCTCCCATGCGTGCCCGCACCGTCTGTGTGCCACGCACTGTTGGCATGCCTTGCTACCCTGCC
 CCCAGGGCCGCTAC

ACGCGTACGCGGCCGCTCGAGCAGAACTCATCTCAGAAGAGGATCTGGCAGCAAATGATATCCTGGATT
 ACAAGGATGACGACGATAAGGTTTAA

Protein Sequence:

>RC222676 representing NM_002278
 Red=Cloning site Green=Tags(s)

MTSSCCVTNNLQASLKSCRPRPASVCSGVCNCRPELCLGYVCQPMACLPVCLPTTFRPASCLSKTYLSSS
 CQAASGISGSMGPGSWYSEGA FNNGEKE TMQFLNDRLASYL TRVRQLEQENAELESRIQEASHSQVL TMT
 PDYQSHFR TIEELQ QKILCTKAENARMV VNI DNAKLAADD FRAKYEAELAMRQLVEADINGLRRI LDDL T
 LCKADLEAQVESLKEELMCLKKNHEEEV GSLRCQLGDRLNIEVDAAPPVDL TRVLEEMRCQYEAMVEANR
 RDVEEWFNMQMEELNQQVAT SSEQ LQNYQSDIIDLRRVTNLEIELQAQHSLRDSLENTL TESEARYSSQ
 LAQMCMITNVEAQLAEIRADLERQNQEYQVLLDVRARLEGEINTYRSLLENEDCKLPCNPCSTPSCCTT
 VSPSPVPRTVCPRTVGMPCSPCPQGRY

TRTRPLEQKLISEEDLAANDILDYKDDDDKV

Chromatograms:

https://cdn.origene.com/chromatograms/mk8040_g03.zip

Restriction Sites:

Sgfl-MluI

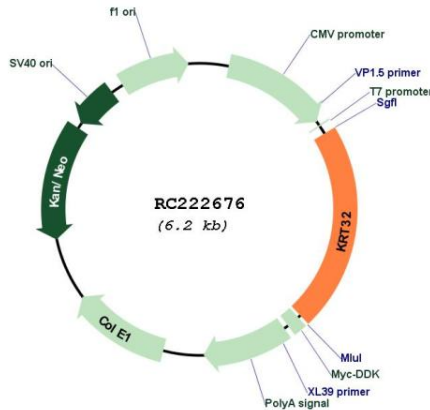
UniProt ID: [Q14532](#)

Cytogenetics: 17q21.2

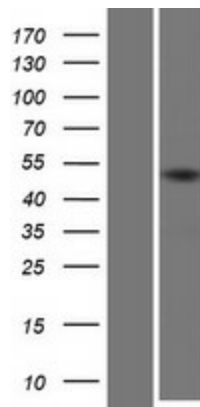
MW: 50.2 kDa

Gene Summary: The protein encoded by this gene is a member of the keratin gene family. As a type I hair keratin, it is an acidic protein which heterodimerizes with type II keratins to form hair and nails. The type I hair keratins are clustered in a region of chromosome 17q12-q21 and have the same direction of transcription. [provided by RefSeq, Jul 2008]

Product images:



Circular map for RC222676



Western blot validation of overexpression lysate (Cat# [LY419430]) using anti-DDK antibody (Cat# [TA50011-100]). Left: Cell lysates from untransfected HEK293T cells; Right: Cell lysates from HEK293T cells transfected with RC222676 using transfection reagent MegaTran 2.0 (Cat# [TT210002]).