

Product datasheet for **RC222669**

SLC19A1 (NM_194255) Human Tagged ORF Clone

Product data:

Product Type:	Expression Plasmids
Product Name:	SLC19A1 (NM_194255) Human Tagged ORF Clone
Tag:	Myc-DDK
Symbol:	SLC19A1
Synonyms:	CHMD; FOLT; hRFC; hSLC19A1; IFC-1; IFC1; MEGAF; REFC; RFC; RFC1; RFT-1
Mammalian Cell Selection:	Neomycin
Vector:	pCMV6-Entry (PS100001)
E. coli Selection:	Kanamycin (25 ug/mL)



[View online »](#)

ORF Nucleotide Sequence:

>RC222669 representing NM_194255
 Red=Cloning site Blue=ORF Green=Tags(s)

TTTTGTAATACGACTCACTATAGGGCGGCCGGGAATTCGTCGACTGGATCCGGTACCGAGGAGATCTGCC
 GCC**CGGATCGCC**

ATGGTGCCTCCAGCCCAGCGGTGGAGAAGCAGGTGCCCGTGAACCTGGGCCTGACCCCGAGCTCCGGT
 CCTGGCGGCCTCGTGTGCTACCTTTGCTTCTACGGCTTCATGGCGCAGATACGGCCAGGGGAGAGCTT
 CATCACCCCTACCTCCTGGGGCCGACAGAAGTTCACGCGGGAGCAGGTCACGAACGAGATCACGCCG
 GTGCTGCTGACTCCTACCTGGCCGTGCTGGTGCCTGTTCTGCTCACCGACTACCTGCGCTACACGC
 CGGTGCTGCTGCTGCAGGGGCTCAGCTTCGTGTCGGTGTGGTGTGCTGCTGCTGGGCCACTCGGTGGC
 GCACATGCAGCTCATGGAGCTTCTACAGCGTCACCATGGCCGCGGCATCGCCTATTCTCTACATC
 TTCTCTCGTGCGGCCGCGCTACCAGCGTGTGGCCGGTACTCGCGCGCTGCGGTGCTGCTGGGCG
 TGTTACCAGCTCCGTGCTGGCCAGCTGCTGGTCACTGTGGCCGAGTCTCTTCTCCAGCTCAACTA
 CATCTCGTGGCCTTCTCACCTCAGCGTGGTCTCGCCCTTCTCTGAAGCGCCCAAGCGCAGCCTC
 TTCTTCAACCGCAGACCGGGGGCGGTGCGAAACCTCGGCTTCGGAGCTGGAGCGCATGAATCCCGGCC
 CAGGCGGGAAGCTGGGACACGCCCTGCGGGTGGCCTGTGGGGACTCAGTGTGGCGCGGATGCTGCGGGA
 GCTGGGGACAGCCTGCGGCGGCCGAGCTGCGCCTGTGGTCCCTCTGGTGGGTCTTCAACTCGGCCGGC
 TACTACCTGGTGGTCTACTACGTGCACATCCTGTGGAACGAGGTGGACCCACCACCAACAGTGCAGCGG
 TCTACAACGGCGCGCAGATGCTGCCTCCACGCTGCTGGGCGCCATCACGTCCTTCGCGCGGGCTTCGT
 GAAGATCCGCTGGGCGCGCTGGTCCAAGCTGCTCATCGCGGGCGTCACGGCCACGAGCGGGGCTGGTC
 TTCCTTGGCGCACACGCGCCACCCGAGCAGCATCTGGCTGTGCTATGCGGCCCTTCGTGCTTCCGTC
 GCTCTACCAGTTCCTCGTGCCCATCGCCACCTTTCAGATTGCATCTTCTGTCTAAAGAGCTCTGTGC
 CCTGGTCTTCGGGGTCAACACGTTCTTTGCCACCATCGTCAAGACCATCATCACTTTCATTGTCTCGGAC
 GTGCGGGGCTGGGCTCCCGTCCGCAAGCAGTTCAGTTATACTCCGTGACTTCTGATCCTGTCCA
 TCATCTACTTCTTGGGGCCATGCTGGATGGCCTGCGGCACTGCCAGCGGGCCACCACCCGCGGCAGCC
 CCCGGCCAGGGCTGAGGAGTCCGCGGAGGAGAAGGCAGCACAGGCACTGAGCGTGCAGGACAAGGGC
 CTCGGAGGCTGCAGCCAGCCAGACCCGCGCTTCCCGAAGACAGCCTGGGGGCTGTGGGGCCAG
 CCTCCCTGGAGCAGACAGAGCAGCCATACCTGGCCAGGCCCGGCCCGCAGGCACTGAATTCT
 GAGCCAGTGACAACCCCTCCCTGCACTCTGTGCTCCGCCAAGCCTCAGGCCCTGAGGCTGCAGAT
 GAGACTTGTCCCAGCTGGCTGTCCATCCTCTGGTGTGACGAAGCTGGGTTGCACTGCTTCCAAGCG
 ACGGTGTTCAAGATGTGAACCAG

ACGCGTACGCGGGCCGCTCGAGCAGAAACTCATCTCAGAAGAGGATCTGGCAGCAAATGATATCCTGGATT
 ACAAGGATGACGACGATAAGGTTTAA

Protein Sequence:

>RC222669 representing NM_194255
 Red=Cloning site Green=Tags(s)

MVPSSPAVEKQVPVEPGDPPELRSWRRLVCYLFCYGFMAQIRPGESFITPYLLGPKNFTRQVTNEITP
 VLSYSYLAVLVPVFLLDYLRYPVLLQLGSLFVSVWLLLLLGHSAHMLMELFYSVTMAARIAYSSYI
 FSLVRPARYQRVAGYSRAAVLLGVFTSSVLGQLLTVGRVSFSTLNYISLAFLTFVVLALFLKRPKRS
 FFNRDDRRCETSASELERMNPGGKLGHALRVACGDSVLARMLRELGDLSRRLWVWVNSAG
 YYLVVYVHILWNEVDPTTNSARVYNGAADAASLLGAITSFAAGFVKIRWARWSKLLIAGVTATQAGLV
 FLLAHRHPSSIWLCYAAFVLRGYSYQFLVPIATFQIASSLSKELCALVFGVNTFFATIVKTIITFIVSD
 VRGLGLPVRKQFLYSVYFLILSIYFLGAMLGRLRHCQRGHHPRQPPAQLRSAAEKAQAQLSVQDKG
 LGGQLPAQSPPLSPEDSLGAVGPASLEQRQSDPYLAQAPAPQAAEFLSPVTTTSPCTLCSAQASGPEAAD
 ETCPLAVHPPGVSKLGLQLPSDGVQNVNQ

TRTRPLEQKLISEEDLAANDILDYKDDDDKV

Chromatograms:

https://cdn.origene.com/chromatograms/mg3447_g07.zip

Restriction Sites: SgfI-MluI

Cloning Scheme:



ACCN: NM_194255

ORF Size: 1773 bp

OTI Disclaimer: Due to the inherent nature of this plasmid, standard methods to replicate additional amounts of DNA in E. coli are highly likely to result in mutations and/or rearrangements. Therefore, OriGene does not guarantee the capability to replicate this plasmid DNA. Additional amounts of DNA can be purchased from OriGene with batch-specific, full-sequence verification at a reduced cost. Please contact our customer care team at custsupport@origene.com or by calling 301.340.3188 option 3 for pricing and delivery.

The molecular sequence of this clone aligns with the gene accession number as a point of reference only. However, individual transcript sequences of the same gene can differ through naturally occurring variations (e.g. polymorphisms), each with its own valid existence. This clone is substantially in agreement with the reference, but a complete review of all prevailing variants is recommended prior to use. [More info](#)

OTI Annotation: This clone was engineered to express the complete ORF with an expression tag. Expression varies depending on the nature of the gene.

Components: The ORF clone is ion-exchange column purified and shipped in a 2D barcoded Matrix tube containing 10ug of transfection-ready, dried plasmid DNA (reconstitute with 100 ul of water).

Reconstitution Method:

1. Centrifuge at 5,000xg for 5min.
2. Carefully open the tube and add 100ul of sterile water to dissolve the DNA.
3. Close the tube and incubate for 10 minutes at room temperature.
4. Briefly vortex the tube and then do a quick spin (less than 5000xg) to concentrate the liquid at the bottom.
5. Store the suspended plasmid at -20°C. The DNA is stable for at least one year from date of shipping when stored at -20°C.

RefSeq: [NM_194255.4](#)

RefSeq Size: 2839 bp

RefSeq ORF: 1776 bp

Locus ID: 6573

UniProt ID: [P41440](#)

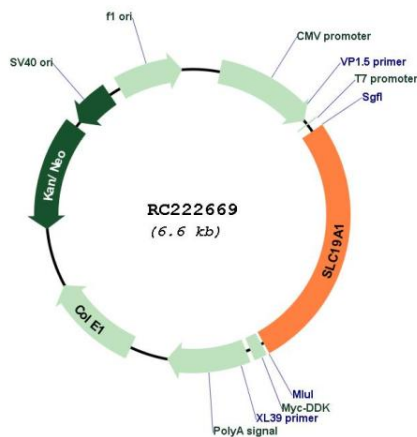
Cytogenetics: 21q22.3

Protein Families: Stem cell - Pluripotency, Transmembrane

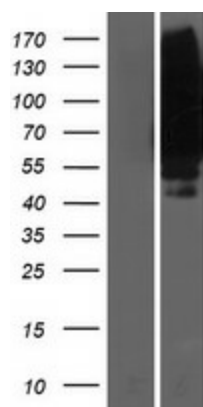
MW: 64.7 kDa

Gene Summary: The membrane protein encoded by this gene is a transporter of folate and is involved in the regulation of intracellular concentrations of folate. Three transcript variants encoding different isoforms have been found for this gene.[provided by RefSeq, Mar 2011]

Product images:



Circular map for RC222669



Western blot validation of overexpression lysate (Cat# [LY405186]) using anti-DDK antibody (Cat# [TA50011-100]). Left: Cell lysates from untransfected HEK293T cells; Right: Cell lysates from HEK293T cells transfected with RC222669 using transfection reagent MegaTran 2.0 (Cat# [TT210002]).