

Product datasheet for RC222663

SP5 (NM_001003845) Human Tagged ORF Clone

Product data:

Product Type:	Expression Plasmids
Product Name:	SP5 (NM_001003845) Human Tagged ORF Clone
Tag:	Myc-DDK
Symbol:	SP5
Mammalian Cell Selection:	Neomycin
Vector:	pCMV6-Entry (PS100001)
E. coli Selection:	Kanamycin (25 ug/mL)
ORF Nucleotide Sequence:	>RC222663 representing NM_001003845 Red=Cloning site Blue=ORF Green=Tags(s)

TTTTGTAATACGACTCACTATAGGGCGGCCGGAATTCGTCGACTGGATCCGGTACCGAGGAGATCTGCCGCCGCGATCGCC

ATGGCCGCGGTGGCCGTCTCCGGAACGACTCGCTGCAGGCCTTCTCCAGGACCGCACCCAGCGCCT
CCCCGGACCTGGGCAAGCACTCGCCCTGGCATTGCTGGCCGCCACCTGTAGCCGCATCGCCAGCCGGG
CGCGGGCGGCCCGGACTTCTGCAGGTGCCCTACGACCCGCGCTGGGCTCACCTCCAGGCTCTTC
CACCCGTGGACCGCCGACATGCCGGCGCACTCGCCAGGCGCACTGCCCGCCCGCATCCCAGCTTGGGGC
TGACGCGCAGAAGACGCACCTGCAGCCGTCCTTCGGGGCTGCGCAGAGCTTCCCCTTACACCCCGCC
CGACCCCTCGTACCCCTACGAGTTCTCGCCGGTCAAGATGCTGCCCTCGAGCATGGCGGCTCTGCCCGCC
AGCTGCGCGCCCGCTACGTGCCCTACGCGGCGCAGGCCGCGCTGCCGCCAGGCTACTCCAACCTGCTGC
CTCCGCGCCGCCACCGCCCGCCGCCACCTGCCGCCAGTTGTACCCAAACCGGCCCGCCGACGACCT
CCCGTGGTGGAGCATCCCGCAGGCGGGCGCCGGGCGGGGCTCCGGGGTTCCGGGAAGCGGCCTCTCC
GGCGCCTGTGCCGGGCCCCACGCGCCCGCTTCCCCGCTCTGCGGCCGCTGCTGCTGCGGCCGCCG
CCGCCCTACAAAGAGGCCTGGTGTGGGCCGTCGGACTTTGCGCAGTACCAGAGCCAGATCGCCGCGCT
GCTGCAGACCAAGCCCCCTGGCGCCACGGCCAGGAGGTGCCCGCTGCCGCTGTCCAACTGCCAG
GCGGGCGGGCGGCCCGCCGAGGCGGAGCCGGGAAGAAGAAGCAGCACGTGTGCCACGTGCCGGGTGCG
GCAAGGTGACGGGAAGACGTGCGACCTGAAGGCGCACCTGCGCTGGCACACGGGCGAGGACCCCTCGT
GTGCAACTGGCTCTTCTGCGGGAAGAGCTTACGCGCTCGGACGAGCTGCAGCGGCACCTGCGGACTCAC
ACGGGCGAGAAGCGCTTTGCCTGTCCCAGTGGCGAAGCGCTTCATGCGCAGCGACACCTCGCGAAGC
ACGTCAAGACTCACCAGAATAAGAAGCTCAAAGTCGCTGAGGCCGGGTTAAGCGGGAGGACGCGCGGGA
CCTG

ACGCGTACGCGGGCGCTCGAGCAGAACTCATCTCAGAAGAGGATCTGGCAGCAATGATATCCTGGATT
ACAAGGATGACGACGATAAAGGTTTAA



[View online »](#)

Protein Sequence: >RC222663 representing NM_001003845
 Red=Cloning site Green=Tags(s)

MAAVAVLRNDSLQAF LQDRTPSASPDLGKHSPLALLAATCSRIGQPGAAAPPDFLQVPYDPALGSPSRLF
 HPWTADMPAHSPGALPPPHPSLGLTPQKTHLQPSFGAAHELPLTPPADPSYPYEFSPVKMLPSSMAALPA
 SCAPAYVPYAAQAALPPGYSNLLPPPPPPPPPTCRQLSPNPAPDDL PWSIPQAGAGPGASGVPGSGLS
 GACAGAPHAPRFPASAAAAAAAAAALQRGLVLGPSDF AQYQSQIAALLQTKAPLAATARRCRRRCPCNCQ
 AAGGAPEAEPGKKQHVCHVPGCGKVYGKTSHLKAHLRWHITGERPFVCNWLFCGKSFTRSDQLQRHLRTH
 TGEKRFACPECGKRFMRSDHLAKHVKTHQNKLLVAEAGVKREDARDL

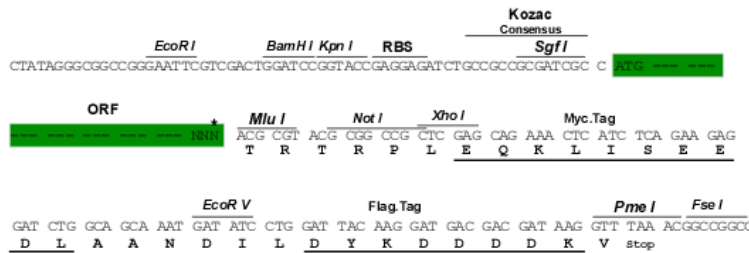
TRTRPLEQKLISEEDLAANDILDYKDDDDKV

Chromatograms: https://cdn.origene.com/chromatograms/mg4264_c07.zip

Restriction Sites: SgfI-MluI

Cloning Scheme:

Cloning sites used for ORF Shuttling:



* The last codon before the Stop codon of the ORF

ACCN: NM_001003845

ORF Size: 1194 bp

OTI Disclaimer: The molecular sequence of this clone aligns with the gene accession number as a point of reference only. However, individual transcript sequences of the same gene can differ through naturally occurring variations (e.g. polymorphisms), each with its own valid existence. This clone is substantially in agreement with the reference, but a complete review of all prevailing variants is recommended prior to use. [More info](#)

OTI Annotation: This clone was engineered to express the complete ORF with an expression tag. Expression varies depending on the nature of the gene.

Components: The ORF clone is ion-exchange column purified and shipped in a 2D barcoded Matrix tube containing 10ug of transfection-ready, dried plasmid DNA (reconstitute with 100 ul of water).

Reconstitution Method:

1. Centrifuge at 5,000xg for 5min.
2. Carefully open the tube and add 100ul of sterile water to dissolve the DNA.
3. Close the tube and incubate for 10 minutes at room temperature.
4. Briefly vortex the tube and then do a quick spin (less than 5000xg) to concentrate the liquid at the bottom.
5. Store the suspended plasmid at -20°C. The DNA is stable for at least one year from date of shipping when stored at -20°C.

RefSeq: [NM_001003845.3](#)

RefSeq Size: 1941 bp

RefSeq ORF: 1197 bp

Locus ID: 389058

UniProt ID: [Q6BEB4](#)

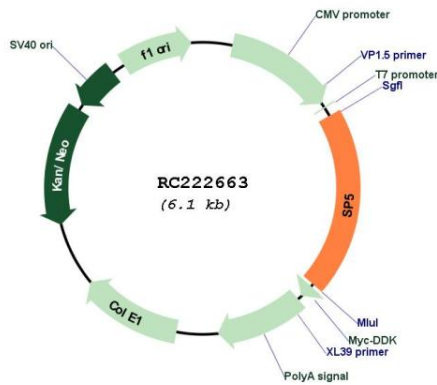
Cytogenetics: 2q31.1

Protein Families: Transcription Factors

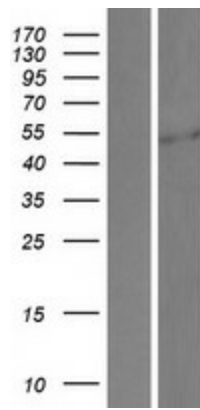
MW: 41.8 kDa

Gene Summary: Binds to GC boxes promoters elements. Probable transcriptional activator that has a role in the coordination of changes in transcription required to generate pattern in the developing embryo (By similarity).[UniProtKB/Swiss-Prot Function]

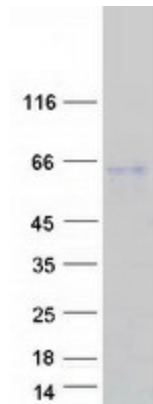
Product images:



Circular map for RC222663



Western blot validation of overexpression lysate (Cat# [LY424028]) using anti-DDK antibody (Cat# [TA50011-100]). Left: Cell lysates from untransfected HEK293T cells; Right: Cell lysates from HEK293T cells transfected with RC222663 using transfection reagent MegaTran 2.0 (Cat# [TT210002]).



Coomassie blue staining of purified SP5 protein (Cat# [TP322663]). The protein was produced from HEK293T cells transfected with SP5 cDNA clone (Cat# RC222663) using MegaTran 2.0 (Cat# [TT210002]).