

## Product datasheet for **RC222648**

### CALHM6 (NM\_001010919) Human Tagged ORF Clone

#### Product data:

**Product Type:** Expression Plasmids  
**Product Name:** CALHM6 (NM\_001010919) Human Tagged ORF Clone  
**Tag:** Myc-DDK  
**Symbol:** CALHM6  
**Synonyms:** C6orf187; dj93H18.5; FAM26F; INAM  
**Mammalian Cell Selection:** Neomycin  
**Vector:** pCMV6-Entry (PS100001)  
**E. coli Selection:** Kanamycin (25 ug/mL)  
**ORF Nucleotide Sequence:** >RC222648 representing NM\_001010919  
 Red=Cloning site Blue=ORF Green=Tags(s)

TTTTGTAATACGACTCACTATAGGGCGGCCGGAATTCGTCGACTGGATCCGGTACCGAGGAGATCTGCC  
 GCC**CGATCGCC**

ATGGAGAAGTTTCGGGCGGTGCTGGACCTGCACGTCAAGCACCACAGCGCCTGGGCTACGGCCTGGTGA  
 CCCTGCTGACGGCGGGCGGGAGCGCATCTTCTCCGCGTGCCATTCCAGTGCCCGTGCAGCGCCGCTG  
 GAACCTGCCCTACGGCCTGGTCTTCTTGTGCTGCGCGGCTCGCGCTCTCCTCCTGGGCTACGTGCTG  
 AGCGCACGCACGTGGCGCTGCTCACCGGATGCTGCTCCAGCGCCCGCGGAGTTGCGGATCGGCGCTGC  
 GCGGCTCCCTGGTGTGCACGAAATCAGCGCGGCCCGCGCTCGCGCCCTCACCTGGGTGGCCGTGGC  
 GCTGCTCGGGGGCGCCTTTTACGAGTGCGCGGCCACCGGAGCGCGGCCCTTCGCGCAGCGCCTGTGCCTC  
 GGCCGAACCGCAGCTGCGCCGCGGAGCTGCCGCTGGTGGCGTGAACCAAGGCCAAGCGCTCGGACGTGC  
 AGGACCTCCTGAAGGATCTGAAGGCTCAGTCGCAGGTGTTGGGCTGGATCTTGATAGCAGTTGTTATCAT  
 CATTCTCTGATTTTTACATCTGTACCCGATGCCTATCTCCAGTTAGTTTTCTGCAGCTGAAATTTCTGG  
 AAAATCTATTTGGAACAGGAGCAGCAGATCCTTAAAAGTAAAGCCACAGAGCATGCAACTGAATTGGCAA  
 AAGAGAATATTAATGTTTCTTTGAGGGCTCGCATCCAAAAGAATATAACACTCCAAGCATGAAAGAGTG  
 GCAGCAAATTTCACTACTGTATACTTTCAATCCGAAGGGCCAGTACTACAGCATGTTGCACAAATATGTC  
 AACAGAAAAGAGAAGACTCACAGTATCAGGTCTACTGAAGGAGATACGGTGATTCTGTTCTTGGCTTTG  
 TAGATTCATCTGGTATAAACAGCACTCCTGAGTTA

**ACGCGT**ACGCGGCCGCTCGAGCAGAAACTCATCTCAGAAGAGGATCTGGCAGCAAATGATATCCTGGATT  
 ACAAGGATGACGACGATAAGGTTTAA



[View online »](#)

**Protein Sequence:** >RC222648 representing NM\_001010919  
Red=Cloning site Green=Tags(s)

MEKFRAVLDLHVKHHSALGYGLVTLT TAGGERIFSAVAFQCPCSAAWNLPYGLVFLLPALALFLLGYVL  
 SARTWRLLTGCCSSARASCGSALRGLVCTQISAAAALAPLTWVAVALLGGAFYECAATGSAFAQRLCL  
 GRNRSCAAELPLVPCNQAKASDVQDLLKDLKAQSQVLGWILIAVVIIILLIFTSVTRCLSPVSLQLKFW  
 KIYLEQEQQILKSKATEHATELAKENIKCFEFGSHPKEYNTPSMKEWQQISSLYTFNPKGQYYSMHLHKYV  
 NRKEKTHSIRSTEGDTVIPVLGFVDSSGINSTPEL

TRTRPLEQKLISEEDLAANDILDYKDDDDKV

**Chromatograms:** [https://cdn.origene.com/chromatograms/ja1305\\_a08.zip](https://cdn.origene.com/chromatograms/ja1305_a08.zip)

**Restriction Sites:** SgfI-MluI

**Cloning Scheme:**



**ACCN:** NM\_001010919

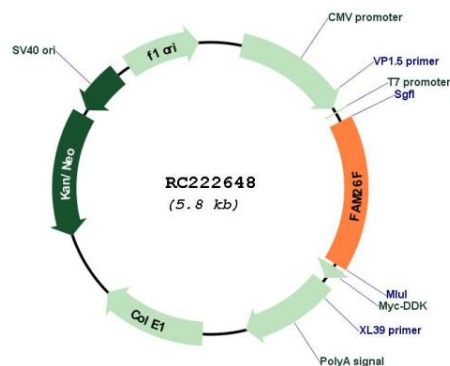
**ORF Size:** 945 bp

**OTI Disclaimer:** Due to the inherent nature of this plasmid, standard methods to replicate additional amounts of DNA in E. coli are highly likely to result in mutations and/or rearrangements. Therefore, OriGene does not guarantee the capability to replicate this plasmid DNA. Additional amounts of DNA can be purchased from OriGene with batch-specific, full-sequence verification at a reduced cost. Please contact our customer care team at [custsupport@origene.com](mailto:custsupport@origene.com) or by calling 301.340.3188 option 3 for pricing and delivery.

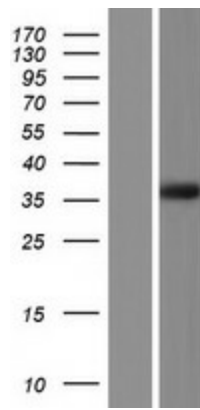
The molecular sequence of this clone aligns with the gene accession number as a point of reference only. However, individual transcript sequences of the same gene can differ through naturally occurring variations (e.g. polymorphisms), each with its own valid existence. This clone is substantially in agreement with the reference, but a complete review of all prevailing variants is recommended prior to use. [More info](#)

<b>OTI Annotation:</b>	This clone was engineered to express the complete ORF with an expression tag. Expression varies depending on the nature of the gene.
<b>Components:</b>	The ORF clone is ion-exchange column purified and shipped in a 2D barcoded Matrix tube containing 10ug of transfection-ready, dried plasmid DNA (reconstitute with 100 ul of water).
<b>Reconstitution Method:</b>	<ol style="list-style-type: none"><li>1. Centrifuge at 5,000xg for 5min.</li><li>2. Carefully open the tube and add 100ul of sterile water to dissolve the DNA.</li><li>3. Close the tube and incubate for 10 minutes at room temperature.</li><li>4. Briefly vortex the tube and then do a quick spin (less than 5000xg) to concentrate the liquid at the bottom.</li><li>5. Store the suspended plasmid at -20°C. The DNA is stable for at least one year from date of shipping when stored at -20°C.</li></ol>
<b>RefSeq:</b>	<u><a href="#">NM_001010919.3</a></u>
<b>RefSeq Size:</b>	1109 bp
<b>RefSeq ORF:</b>	948 bp
<b>Locus ID:</b>	441168
<b>UniProt ID:</b>	<u><a href="#">Q5R3K3</a></u>
<b>Cytogenetics:</b>	6q22.1
<b>Protein Families:</b>	Transmembrane
<b>MW:</b>	34.3 kDa
<b>Gene Summary:</b>	Pore-forming subunit of a voltage-gated ion channel.[UniProtKB/Swiss-Prot Function]

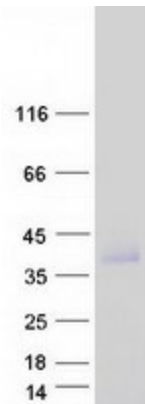
### Product images:



Circular map for RC222648



Western blot validation of overexpression lysate (Cat# [LY423229]) using anti-DDK antibody (Cat# [TA50011-100]). Left: Cell lysates from untransfected HEK293T cells; Right: Cell lysates from HEK293T cells transfected with RC222648 using transfection reagent MegaTran 2.0 (Cat# [TT210002]).



Coomassie blue staining of purified CALHM6 protein (Cat# [TP322648]). The protein was produced from HEK293T cells transfected with CALHM6 cDNA clone (Cat# RC222648) using MegaTran 2.0 (Cat# [TT210002]).