

Product datasheet for **RC222642**

USP15 (NM_006313) Human Tagged ORF Clone

Product data:

Product Type:	Expression Plasmids
Product Name:	USP15 (NM_006313) Human Tagged ORF Clone
Tag:	Myc-DDK
Symbol:	USP15
Synonyms:	UNPH-2; UNPH4
Mammalian Cell Selection:	Neomycin
Vector:	pCMV6-Entry (PS100001)
E. coli Selection:	Kanamycin (25 ug/mL)



[View online »](#)

**ORF Nucleotide
Sequence:**

>RC222642 representing NM_006313
 Red=Cloning site Blue=ORF Green=Tags(s)

TTTTGTAATACGACTCACTATAGGGCGGCCGGAATTCGTGACTGGATCCGGTACCGAGGAGATCTGCC
 GCC**CGGATCGCC**

ATGGCGGAAGCGGAGCGCGGATCTGGACACCCAGCGGTCTGACATCGGACGCTGCTCAAACCTCGC
 TCCGAAAAGGGGACACCTGGTACCTAGTCGATAGTCGCTGGTTCAAACAGTGGAATAAATATGTTGGCTT
 TGACAGTTGGGACAAATACCAGATGGGAGATCAAATGTGTATCCTGGACCCATTGATAACTCTGGACTT
 CTCAAAGATGGTATGCCAGTCACTTAAGGAACACCTTATTGATGAATTGGATTACATACTGTTGCCAA
 CTGAAGGTTGGAATAAATTGTCAGCTGGTACACATTGATGGAAGGTCAAGAGCCAATAGCACGAAAGGT
 GGTTGAACAGGGTATGTTGTAAGCACTGCAAAGTAGAAGTATATCTCACAGAATTGAAGCTATGTGAA
 AATGGAACATGAATAATGTTGTAAGTCAAGATTTAGCAAAGCTGACACAATAGATAACAATTGAAAAGG
 AAATAAGAAAAATCTTCAGTATCCAGATGAAAAGGAGACCAGATTGTGGAACAAATACATGAGTAACAC
 ATTTGAACCACTGAATAAACAGACAGCACCATTGAGGATGCTGGTTTATACCAAGGACAGGTATTAGTG
 ATAGAACAGAAAAATGAAGATGGAACATGGCCAAGGGTCTTCTACTCCTAATGTGAAAAACTCAAATT
 ACTGTCTTCCATCATATACCGCTTATAAGAACTATGATTATTCGGAACCTGGAAGAAACAATGAACAGCC
 AGGCTCTGTGGCCTAAGTAACTTGGGAAATACGTGTTTCATGAACTCAGCTATTCAGTGTTTGAGCAAC
 ACACCTCCACTTACTGAGTATTTCTCAATGATAAGTATCAAGAAGAAGTGAATTTTGACAATCCCTTAG
 GAATGAGAGGTGAAATAGCTAAATCTTATGCCGAAGTCAAGCAAATGTGGTCTGGAAAGTTAGCTA
 CGTCACCCCAAGAGCCTTAAAGACACAGGTAGGACGTTTTGCACCTCAGTTCTCTGGATATCAGCAGCA
 GACTGTCAAGAACTGTTAGCTTTCTATTAGATGGATTACATGAGGATTTGAATAGAATTAGGAAAAAC
 CATAATACAATTAAGATGCAGATGGAAGGCCAGATAAAGTGGTTGCCGAAGAAGCTGGGAAAAACCA
 TTTAAAACGAAAATGATTCTATCATAGTAGATATTTTCATGGCCTTTTCAAATCAACTTTAGTTTGTCT
 GAGTGTGCTAAGATTTTCAGTAACATTTGATCCTTTTTGTTACTTGACACTTCCATTGCCCATGAAAAAG
 AACGCACCTTGGAAAGTTACTTAGTTAGAATGGATCCACTTACCAAACCTATGCAGTACAAAGTGGTTGT
 CCCAAAATTGGAACATATTAGATCTTTGTACAGCATTGTCTGCTTTGTGAGGAATACCTGCAGATAAG
 ATGATAGTTACTGATATACAATCATAGATTTACAGAATATTCGCTATGGATGAAAACCTTAGTAGTA
 TTATGGAACGGGATGATATTTATGTGTTGAAATTAACATCAATAGGACAGAAGATACAGAGCACGTGAT
 TATTCCTGTTTGCTAAGAGAAAAATTCAGACACTCGAGTTATACCCACCATACTGGTCTTCTCACTTTT
 GGTGAGCCCTTTCTTATGGCTGTACCACGAAACAATACTGAAGACAACTTTATAATCTCCTGCTCTTGA
 GAATGTGCCGATATGTCAAATATCTACTGAAACTGAAGAAACTGAAGGATCCCTACACTGCTGTAAAGGA
 CAAAAATTAATGGGAATGGCCAAATGGCATACATGAAGAAGGCTCACCAAGTGAATGGAAACAGAT
 GAGCCAGATGATGAATCCAGCCAGGATCAAGAACTTCCCTCAGAGAATGAAAACAGTCACTGTAAGATT
 CAGTTGGAGGAGATAATGATTCTGAAAATGGATTATGACTGAGGATACTTGCAAAGGTCAACTCACGGG
 ACACAAAAACGATTGTTTACATTCCAGTTCAACAACCTTAGGCAATACTGATATCAACTACATCAAAGAT
 GATACCAGGCATATAAGATTTGATGATAGGCAGCTTAGGCTAGATGAAAGATTTTTTCTGCTTTGGATT
 GGGATCCTGATTTGAAAAAAGATATTTTGTGAAAATGCTGCCGAGGACTTTGAAAAACATGAAAGTGT
 GGAGTATAAACCTCCTAAAAACCTTTTGTGAAATTAAGATTGCACTTGAACCTTTTACAAACAAAGAA
 AAGCTAGGTGCTGAAGATCCCTGGTATTGTCCGAATTGTAAGAACATCAGCAAGCCACAAGAAATTTGG
 ATTTATGGTCCCTGCCTCCAGTACTTGTAGTACATCTCAAGCGATTTTCTTACAGTCGATACATGAGAGA
 CAAGTTGGATACCTTAGTTGATTTTCTATCAATGACTTGGATATGTCGGAATCTTAATTAATCCAAAT
 GCAGGTCCTTGCCGCTATAATCTGATTGCTGTTTCCAACCACTATGGAGGGATGGGAGGAGGACACTATA
 CTGCTTTTGCAAAAAATAAGATGATGGAATAAGTACTATTTTGTGACAGTAGTGTCTCCACTGCATC
 TGAAGACCAAATGTGTCAAAGCAGCATATGACTCTTCTACCAGAGACAAGACACTTTCAGTGGAACT
 GGCTTTTTCTCTTGACCGAGAACTAAAGGTGCTTCAGCTGCCACTGGCATCCATTAGAAAAGTGATG
 AAGATAGCAATGATAATGACAATGATATAGAAAATGAAAAGTGTATGCACACTAAC

ACGCGTACGCGGCCGCTCGAGCAGAACTCATCTCAGAAGAGGATCTGGCAGCAAATGATATCCTGGATT
 ACAAGGATGACGACGATAAGGTTTAA

Protein Sequence: >RC222642 representing NM_006313
 Red=Cloning site Green=Tags(s)

MAEGGAADLDTQRSDIATLLKTSRKGDTWYLVDSRWFKQWKYVGFDSWDKYQMGDQNVYGPIDNSGL
 LKDGDAQSLKEHLIDELDYILLPTEGWNLVSWYTLMEGQEPARKVVEQGMFVKHCKVEVYLTELKLC
 NGNMNNVVTRRFKADTIDTIEKEIRKIFSIPEDEKTRLNKYSNTFEPLNKPDSIQDAGLYQGQVLV
 IEQKNEDGTWPRGPSTPNVKNNSYCLPSYATYKNYDYSEPRNNEQPGLCGLSNLGNTECFMNSAIQCLSN
 TPPLTEYFLNDKYQEELNFDNPLGMRGEIAKSYAELIKQMWSGKFSYVTPRAFKTQVGRFAPQFSGYQQQ
 DCQELLAFLLDGLHEDLNRIKPKYIQLKDADGRPKVVAEEAWENHLKRNSIIVDIFHGLFKSTLVCP
 ECAKISVTFDPFCYLTLPLPMKKERTLEVYLVRMDPLTKPMQYKVVVVKIGNILDCTALSALSGIPADK
 MIVTDIYNHRFHRIFAMDENLSSIMERDDIYVFEININRTEDTEHVIIPVCLREKFRHSSYTHHTGSSLF
 GQPFMLAVPRNNTEDKLYNLLLRLMCRYVKISTETEETEGSLHCKDQNINGNPNGIHEEGSPSEMETD
 EPDDESSQDQELPSENENSQSEDSVGGDNDSENGLCTEDTCKGQLTGHKRLLFTTFQFNNLGNTDINYIKD
 DTRHIRFDDRQLRLDERFFLALDWDPLKKRYFDENAAEDFEKHESVEYKPPKPFVKLKDICIELFTTKE
 KLGAEWPWYCPNCKEHQQAATKLDLWSPVVLVHLKRFYSRYMRDKLDTLVDFPINDLDMSEFLINPN
 AGPCRYNLIIVSNHYGGMGGGHYTAFANKDDGWYFFDSSSVSTASEDQIVSKAAYVLFYQRQDTFSGT
 GFFPLDRETKGASAATGIPLESDSDNDNDNDIENENCMHTN

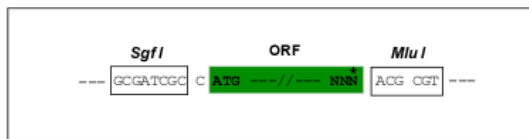
TRTRPLEQKLISEEDLAANDILDYKDDDDKV

Chromatograms: https://cdn.origene.com/chromatograms/mg3521_c06.zip

Restriction Sites: SgfI-MluI

Cloning Scheme:

Cloning sites used for ORF Shuttling:



* The last codon before the Stop codon of the ORF

ACCN: NM_006313

ORF Size: 2856 bp

OTI Disclaimer: Due to the inherent nature of this plasmid, standard methods to replicate additional amounts of DNA in E. coli are highly likely to result in mutations and/or rearrangements. Therefore, OriGene does not guarantee the capability to replicate this plasmid DNA. Additional amounts of DNA can be purchased from OriGene with batch-specific, full-sequence verification at a reduced cost. Please contact our customer care team at custsupport@origene.com or by calling 301.340.3188 option 3 for pricing and delivery.

The molecular sequence of this clone aligns with the gene accession number as a point of reference only. However, individual transcript sequences of the same gene can differ through naturally occurring variations (e.g. polymorphisms), each with its own valid existence. This clone is substantially in agreement with the reference, but a complete review of all prevailing variants is recommended prior to use. [More info](#)

OTI Annotation: This clone was engineered to express the complete ORF with an expression tag. Expression varies depending on the nature of the gene.

Components: The ORF clone is ion-exchange column purified and shipped in a 2D barcoded Matrix tube containing 10ug of transfection-ready, dried plasmid DNA (reconstitute with 100 ul of water).

Reconstitution Method:

1. Centrifuge at 5,000xg for 5min.
2. Carefully open the tube and add 100ul of sterile water to dissolve the DNA.
3. Close the tube and incubate for 10 minutes at room temperature.
4. Briefly vortex the tube and then do a quick spin (less than 5000xg) to concentrate the liquid at the bottom.
5. Store the suspended plasmid at -20°C. The DNA is stable for at least one year from date of shipping when stored at -20°C.

RefSeq: [NM_006313.3](#)

RefSeq Size: 4611 bp

RefSeq ORF: 2859 bp

Locus ID: 9958

UniProt ID: [Q9Y4E8](#)

Cytogenetics: 12q14.1

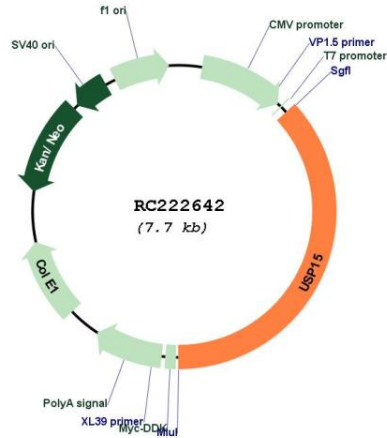
Domains: UCH, DUSP

Protein Families: Druggable Genome, Protease

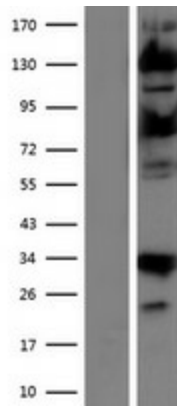
MW: 109.1 kDa

Gene Summary:

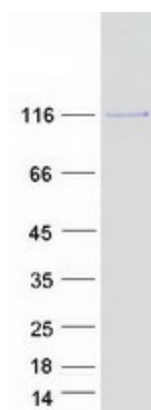
This gene encodes a member of the ubiquitin specific protease (USP) family of deubiquitinating enzymes. USP enzymes play critical roles in ubiquitin-dependent processes through polyubiquitin chain disassembly and hydrolysis of ubiquitin-substrate bonds. The encoded protein associates with the COP9 signalosome, and also plays a role in transforming growth factor beta signalling through deubiquitination of receptor-activated SMAD transcription factors. Alternatively spliced transcript variants encoding multiple isoforms have been observed for this gene, and a pseudogene of this gene is located on the long arm of chromosome 2. [provided by RefSeq, Nov 2011]

Product images:


Circular map for RC222642



Western blot validation of overexpression lysate (Cat# [LY416729]) using anti-DDK antibody (Cat# [TA50011-100]). Left: Cell lysates from untransfected HEK293T cells; Right: Cell lysates from HEK293T cells transfected with RC222642 using transfection reagent MegaTran 2.0 (Cat# [TT210002]).



Coomassie blue staining of purified USP15 protein (Cat# [TP322642]). The protein was produced from HEK293T cells transfected with USP15 cDNA clone (Cat# RC222642) using MegaTran 2.0 (Cat# [TT210002]).