

Product datasheet for **RC222638**

ATF3 (NM_004024) Human Tagged ORF Clone

Product data:

Product Type: Expression Plasmids
Product Name: ATF3 (NM_004024) Human Tagged ORF Clone
Tag: Myc-DDK
Symbol: ATF3
Synonyms: activating transcription factor 3; ATF3deltaZip2; ATF3deltaZip2c; ATF3deltaZip3; OTTHUMP00000034887; OTTHUMP00000034890
Mammalian Cell Selection: Neomycin
Vector: pCMV6-Entry (PS100001)
E. coli Selection: Kanamycin (25 ug/mL)
ORF Nucleotide Sequence: >RC222638 representing NM_004024
Red=Cloning site **Blue**=ORF **Green**=Tags(s)

TTTTGTAATACGACTCACTATAGGGCGGCCGGAATTCGTCGACTGGATCCGGTACCGAGGAGATCTGCC
GCC**CGATCGCC**

ATGATGCTTCAACACCCAGGCCAGGTCTCTGCCTCGGAAGTGAGTGCTTCTGCCATCGTCCCCTGCCTGT
CCCCTCTGGGTCACTGGTGTGGAGGATTTGCTAACCTGACGCCCTTTGTCAAGGAAGAGCTGAGGTT
TGCCATCCAGAACAAGCACCTCTGCCACCGGATGTCTCTGCGCTGGAATCAGTCACTGTGAGCGACAGA
CCCCTCGGGGTGCCATCAGAAAGCCGAGGTAGCCCCTGAAGAAGATGAAAGGAAAAAGAGCGGACGAG
AAAGAAATAAGATTGCAGCTGCAAAGTCCGAAACAAGAAGGAGAAGACGGAGTGCCTGCAGAAACT
CCCAAGGCCCTTTGGGTCCAGAAGACCTGCATATGGGCTGTTGACTCATGCAA

ACGCGTACGCGGCCGCTCGAGCAGAAACTCATCTCAGAAGAGGATCTGGCAGCAAATGATATCCTGGATT
ACAAGGATGACGACGATAAGGTTTAA

Protein Sequence: >RC222638 representing NM_004024
Red=Cloning site **Green**=Tags(s)
MMLQHPGQVSASEVSASAIVPCLSPPGSLVFEDFANLTPFVKEELRFQAIQNKHLCHRMSALESVTVSDR
PLGVSIKAEVAPEEDERKKRRRERNKIAAAKCRNKKKEKTECLQKLPFPFVQKTCIWAVDSCK
TRTRPLEQKLISEEDLAANDILDYKDDDDKV

Chromatograms: https://cdn.origene.com/chromatograms/mg4017_f01.zip

Restriction Sites: SgfI-MluI



Cloning Scheme:


ACCN: NM_004024

ORF Size: 405 bp

OTI Disclaimer: The molecular sequence of this clone aligns with the gene accession number as a point of reference only. However, individual transcript sequences of the same gene can differ through naturally occurring variations (e.g. polymorphisms), each with its own valid existence. This clone is substantially in agreement with the reference, but a complete review of all prevailing variants is recommended prior to use. [More info](#)

OTI Annotation: This clone was engineered to express the complete ORF with an expression tag. Expression varies depending on the nature of the gene.

Components: The ORF clone is ion-exchange column purified and shipped in a 2D barcoded Matrix tube containing 10ug of transfection-ready, dried plasmid DNA (reconstitute with 100 ul of water).

Reconstitution Method:

1. Centrifuge at 5,000xg for 5min.
2. Carefully open the tube and add 100ul of sterile water to dissolve the DNA.
3. Close the tube and incubate for 10 minutes at room temperature.
4. Briefly vortex the tube and then do a quick spin (less than 5000xg) to concentrate the liquid at the bottom.
5. Store the suspended plasmid at -20°C. The DNA is stable for at least one year from date of shipping when stored at -20°C.

RefSeq: [NM_004024.4](#), [NP_004015.4](#)

RefSeq Size: 2270 bp

RefSeq ORF: 407 bp

Locus ID: 467

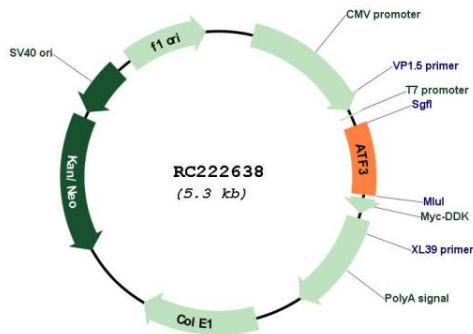
Cytogenetics: 1q32.3

Protein Families: Transcription Factors

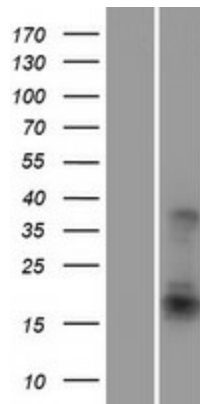
MW: 15.1 kDa

Gene Summary: This gene encodes a member of the mammalian activation transcription factor/cAMP responsive element-binding (CREB) protein family of transcription factors. This gene is induced by a variety of signals, including many of those encountered by cancer cells, and is involved in the complex process of cellular stress response. Multiple transcript variants encoding different isoforms have been found for this gene. It is possible that alternative splicing of this gene may be physiologically important in the regulation of target genes. [provided by RefSeq, Apr 2011]

Product images:



Circular map for RC222638



Western blot validation of overexpression lysate (Cat# [LY418284]) using anti-DDK antibody (Cat# [TA50011-100]). Left: Cell lysates from untransfected HEK293T cells; Right: Cell lysates from HEK293T cells transfected with RC222638 using transfection reagent MegaTran 2.0 (Cat# [TT210002]).