

Product datasheet for **RC222628**

TAL1 (NM_003189) Human Tagged ORF Clone

Product data:

Product Type: Expression Plasmids
Product Name: TAL1 (NM_003189) Human Tagged ORF Clone
Tag: Myc-DDK
Symbol: TAL1
Synonyms: bHLHa17; SCL; tal-1; TCL5
Vector: pCMV6-Entry (PS100001)
E. coli Selection: Kanamycin (25 ug/mL)
Cell Selection: Neomycin
ORF Nucleotide Sequence: >RC222628 representing NM_003189
Red=Cloning site Blue=ORF Green=Tags(s)

TTTTGTAATACGACTCACTATAGGGCGGCCGGAATTCGTCGACTGGATCCGGTACCGAGGAGATCTGCC
GCC**GCGATCGCC**

ATGACCGAGCGGGCCGCGAGCGAGGCGGGCTCGCAGTGACCCAGCTAGAGGGACGGGACGCGGCCGAGG
CCAGCATGGCCCCCGCACCTGGTCTGCTGAACGGCGTCGCCAAGGAGACGAGCCGCGCGGCCGAGC
GGAGCCCCAGTCATCGAACTGGGCGCGCGGAGGCCCGGGGGCGGCCCTGCCGTGGGGCGCGCC
GCGAGAGACTAAAGGGCCGCGACGCGCGGACGGCCGAAGCGCGCCATCGGGTGCCACACCAGCTGT
GCAGACCTCCCGGGCCCGCCCGGCCCGCGCCCGCCTCGGTTACAGCGGAGCTGCCCGCGACGGCCG
CATGGTGCAGCTGAGTCCTCCGCGCTGGCTGCCCGCGCCCGCCCGCGCGCGCTGCTTACAGCCTC
AGCCAGCCGCTGGCCTCTCTCGGCAGCGGGTCTTTGGGGAGCCGGATGCCTTCCCTATGTTACACCA
ACAATCGAGTGAAGAGGAGACCTTCCCCATGAGATGGAGATTACTGATGGTCCCCACACCAAAGTTGT
GCGGCGTATCTTCAACAACAGCCGGGAGCGATGGCGGCAGCAGAATGTGAACGGGGCCTTTGCCGAGTC
CGCAAGCTGATCCCCACACATCCCCGGACAAGAAGCTCAGCAAGAATGAGATCCTCCGCTGGCCATGA
AGTATATCAACTTCTTGGCCAAGCTGCTCAATGACCAGGAGGAGGGCACCCAGCGGCCAAGACTGG
CAAGGACCCTGTGGTGGGGCTGGTGGGGTGGAGGTGGGGGAGGGGTGGCGCGCCCCAGATGACCTC
CTGCAAGACGTGCTTTCCCCAACTCCAGCTGCGGCAGCTCCCTGGATGGGGCAGCCAGCCCGGACAGCT
ACACGGAGGAGCCCGCGCCAAGCACACGGCCCGCAGCCTCCATCCTGCCATGCTGCCTGCCCGCATGG
AGCCGGCCCTCGG

ACGCGTACGCGGGCGCTCGAGCAGAACTCATCTCAGAAGAGGATCTGGCAGCAATGATATCCTGGATT
ACAAGGATGACGACGATAAGGTTTAA



[View online »](#)

Protein Sequence: >RC222628 representing NM_003189
 Red=Cloning site Green=Tags(s)

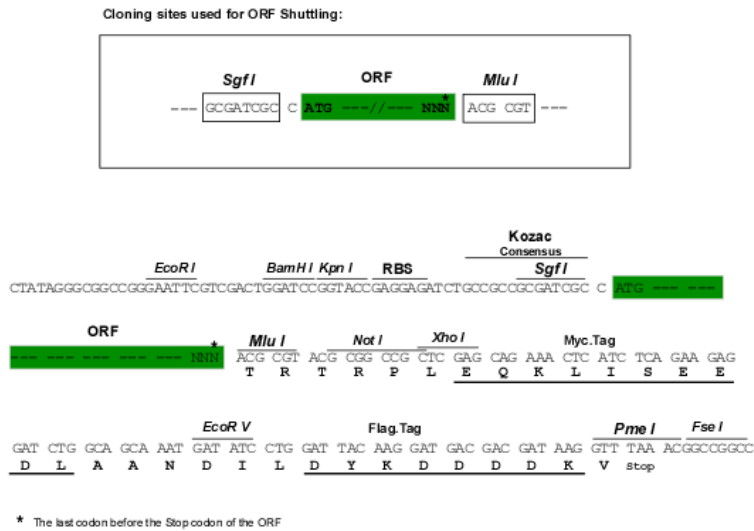
MTERPPSEAAARSDPQLEGRDAAEASMAPPHLVLLNGVAKETSRAAAAEPVIELGARGGPGGGPAGGGGA
 ARDLKGRDAATAEARHRVPTTELCRPPGPAPAPASVTAELPGDGRMVQLSPPALAAPAAPGRALLYSL
 SQPLASLGSFGPEPDAFPMFTTNNRVKRRPSPYEMEITDGPHTKVRRRIFTNSRERWRQNVNGAF AEL
 RKLIPTHPPDKLSKNEILRLAMKYINFLAKLLNDQEEEGTQRAKTGKDPVVGAGGGGGGGGGGAPPDDL
 LQDVLSPNSSCGSSLDGAASPSYTEEPAPKHTARSLHPAMLP AADGAGPR

TRTRPLEQKLISEEDLAANDILDYKDDDDKV

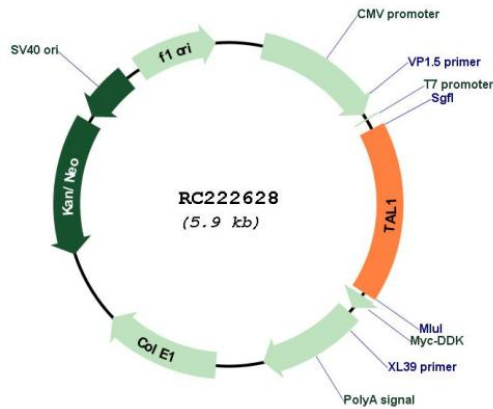
Chromatograms: https://cdn.origene.com/chromatograms/mg2981_g12.zip

Restriction Sites: SgfI-MluI

Cloning Scheme:

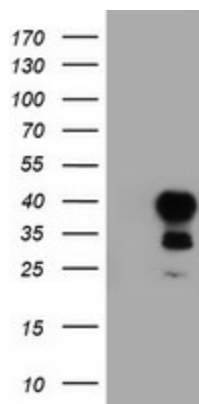


Plasmid Map:

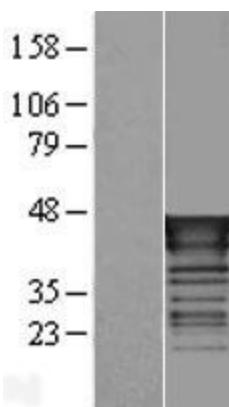


ACCN: NM_003189

ORF Size:	993 bp
OTI Disclaimer:	The molecular sequence of this clone aligns with the gene accession number as a point of reference only. However, individual transcript sequences of the same gene can differ through naturally occurring variations (e.g. polymorphisms), each with its own valid existence. This clone is substantially in agreement with the reference, but a complete review of all prevailing variants is recommended prior to use. More info
OTI Annotation:	This clone was engineered to express the complete ORF with an expression tag. Expression varies depending on the nature of the gene.
Components:	The ORF clone is ion-exchange column purified and shipped in a 2D barcoded Matrix tube containing 10ug of transfection-ready, dried plasmid DNA (reconstitute with 100 ul of water).
Reconstitution Method:	<ol style="list-style-type: none">1. Centrifuge at 5,000xg for 5min.2. Carefully open the tube and add 100ul of sterile water to dissolve the DNA.3. Close the tube and incubate for 10 minutes at room temperature.4. Briefly vortex the tube and then do a quick spin (less than 5000xg) to concentrate the liquid at the bottom.5. Store the suspended plasmid at -20°C. The DNA is stable for at least one year from date of shipping when stored at -20°C.
RefSeq:	NM_003189.5
RefSeq Size:	5000 bp
RefSeq ORF:	996 bp
Locus ID:	6886
UniProt ID:	P17542
Cytogenetics:	1p33
Domains:	HLH
Protein Families:	Adult stem cells, Druggable Genome, ES Cell Differentiation/IPS, Transcription Factors
MW:	34.1 kDa
Gene Summary:	Implicated in the genesis of hemopoietic malignancies. It may play an important role in hemopoietic differentiation. Serves as a positive regulator of erythroid differentiation (By similarity).[UniProtKB/Swiss-Prot Function]

Product images:

HEK293T cells were transfected with the pCMV6-ENTRY control (Cat# [PS100001], Left lane) or pCMV6-ENTRY TAL1 (Cat# RC222628, Right lane) cDNA for 48 hrs and lysed. Equivalent amounts of cell lysates (5 ug per lane) were separated by SDS-PAGE and immunoblotted with anti-TAL1 (Cat# [TA503922]). Positive lysates [LY418842] (100ug) and [LC418842] (20ug) can be purchased separately from OriGene.



Western blot validation of overexpression lysate (Cat# [LY418842]) using anti-DDK antibody (Cat# [TA50011-100]). Left: Cell lysates from untransfected HEK293T cells; Right: Cell lysates from HEK293T cells transfected with RC222628 using transfection reagent MegaTran 2.0 (Cat# [TT210002]).