

## Product datasheet for **RC222622**

### **RBM15B (NM\_013286) Human Tagged ORF Clone**

#### **Product data:**

Product Type:	Expression Plasmids
Product Name:	RBM15B (NM_013286) Human Tagged ORF Clone
Tag:	Myc-DDK
Symbol:	RBM15B
Synonyms:	HsOTT3; HUMAGCGB; OTT3
Mammalian Cell Selection:	Neomycin
Vector:	pCMV6-Entry (PS100001)
E. coli Selection:	Kanamycin (25 ug/mL)



[View online »](#)

**ORF Nucleotide Sequence:**

>RC222622 representing NM\_013286  
 Red=Cloning site Blue=ORF Green=Tags(s)

TTTTGTAATACGACTCACTATAGGGCGGCCGGGAATTCGTCGACTGGATCCGGTACCGAGGAGATCTGCC  
 GCC**CGCATCGCC**

ATGAAGCGGCAGAGCGAGCGAGACTCTAGCCCAGCGGGCGGGCTCGTATCGTCCGCCAAGCGTCCGC  
 GGGAGCGCGAACGGGAGGCGGAGGCGGGCGGGCGGGCGGCGACAAGGCCTCTGGCGCGCCAAGCA  
 CCCGGTTCACGCGCGGGCCCGGACAAACCCCGCGGCAGCGGAAGCGGGGGGGCGGCATCGGACGGC  
 CGCGGCACCGGGGACGGAATCACCGCGGAGTAGCGGGCGCTCCTCGGGCTCCGGCGCTGGCGCGGGG  
 GACGCGGGCGCAAGGCCTCGGGGACCCGGGCGCTCCGGCATGTCGCCCGCGCGTCTCCTCTGCCGC  
 GCCTCCGCCACCGCTGGGGCGGAGCCCGGTGTCCGGCTCATCCGCGCCGCGCTGAGTACAAGACG  
 TTGCTCATCAGCAGTTGAGCCCCGCGTGCCCGGAGCACCTCGAGGACCGGCTTCCACCAGTTCA  
 AGCGCTTCGGCGAGATCAGCCTCCGCTGTGCGACACGCCTGAGCTGGGCGGTGGCCACGTGAATTT  
 CCGGCACCCACAGGACGACGCGAGGCCCGCCAGCACGCCTGGCCCGGAGCTGCTGCTCTACGACCGC  
 CCGCTCAAGGTAGAGCCCGTGTACTGCGTGGCGGCGGGGAGCAGTCGGCGAAGTAGCAGCAGCAGCG  
 CCGCCGCTTCCACGCCTCCCCAGGGCCCGCCGCGCCCGGACCCGCTCGGCTACCTCCCGCTACACGG  
 AGGCTACCAGTACAAGCAGCGCTCGCTGTCCCCGTCGCTGCCCGCCCTGCGGGAGCCCCGTGCCCGT  
 CACGCCCGCAGCCTTCGCCCTGGATGCCGCTGCTGCCCGCCCGTGGGACTGTCCCGGGAGCGGGCCC  
 TGGACTACTACGGGCTGTACGACGACCGTGGGCGCCCTATGGCTACCCAGCTGTGTGTGAGGAGGACCT  
 GATGCCCGAGGATGACCAGCGGGCCACGCGCAACCTCTCATTGGTAACCTGGACCACAGCGTATCTGAG  
 GTGGAGCTGCGAAGGGCCTTCGAGAAATATGCCATCATCGAGGAGGTGGTATCAAGAGGCTGCCCGT  
 GCCAGGGCGGTGCCTATGCCTCCTCAAGTCCAGAACCTGGACATGGCCATAGGGCTAAGGTGGCCAT  
 GTCGGGGCGAGTATTGGTCGCAACCCCAATTAAGATAGGCTATGGCAAGGCCAACCCACCACTCGTCTC  
 TGGGTGGGTGGCCTGGGACCTAACACGTCACTGGCGGCTCTGGCCGAGAGTTTGACCGCTTTGGGAGCA  
 TTCGGACATTGATCACGTCAAAGGAGATAGCTTTGCCTATATTCAGTACGAGAGCTTGGACGCAGCCCA  
 GGCCGCTGTGCTAAAATGAGGGTTTTCCCTTGGGTGGACCAGACCGCAGGCTCCGCGTGGATTTTGCC  
 AAAGCAGAGGAGACTCGGTACCCCGCAGCAGTACCAGCCCTCGCCACTCCCTGTGCATTATGAGCTGCTCA  
 CAGATGGATACACCCGGCACCGCAACCTGGACGCCGACCTGGTGCGGGACAGGACGCCCCACACCTTCT  
 GTACTCAGACCGAGACCGGACTTTTTTGAAGGGGACTGGACCAGCCCAAGTAAAAGCTCTGACCCCGA  
 AACAGCCTTGAGGGCTACAGTCGCTCAGTGCAGCCGAGTGGTGGAGCCTTGGGGGACAGTGGAGACC  
 GTGGTTTGCCCAAGCCCTGGGAAGAGAGGCGGAAACGGAGAAGCCTTCCAGTGACCGTGGGAGGACAAC  
 CCATTCACCATATGAGGAACGGAGTAGGACCAAGGGCAGTGGGCAGCAGTCAGAGCGGGGCTCCGACCGC  
 ACCCCTGAGCGCAGCCGAAGGAGAACCCTCCAGTGAAGGGACCAAGGAGTCCAGCAGCAACTCCCTCA  
 GCAACAGCAGACATGGGGCTGAGGAACGGGGCCACCACCACCACCACGAGGCTGCAGACTCTCCCA  
 CGGGAAGAAGGCAAGAGACAGCGAGCGCAATCACCGGACCACAGAGGCCGAGCCCAAGCCTCTGGAAGAG  
 CCAAAACACGAGACCAAAAAGCTGAAGAATCTTTCAGAGTACGCTCAGACACTACAGCTGGGTGGAATG  
 GGCTTCTGGTGTGAAAAACAGCTGCTTCCCGCAGTCTATGCATATCCTAGAGGGGACCGGGGTGAT  
 CAGCAGTCTCCTCAAAGACCACACTTCTGGGAGCAAGCTGACCCAGCTGAAGATCGCCAGCGCCTCGA  
 CTGGACCAGCCCAAGCTTGACGAGGTACACGACGCATCAAGCAGGGGAGCCCAACGGCTATGCGGTCC  
 TCTTAGCCACCCAGGCAACCCCAAGTGGCTTGGCACTGAGGGGATGCCACAGTAGAGCCCGGTGCA  
 GAGGCGGCTTCTCAGGAACCTGCTCCTACTTAAAACAGAAGCAGGCCGAGGGGTGATCAGCTTGCCA  
 GTGGGGGGTCCAAGGGCAGAGACGGCACAGGCATGCTCTACGCCTTCCACCCTGCGACTTTTCCAGC  
 AGTACCTCCAGTCAGCACTAAGGACATTGGCAAGCTAGAAGAAGACACATGGTATGATCATCGTCAG  
 AGACTGCC

**ACGCGT**ACGCGGCGGCTCGAGCAGAACTCATCTCAGAAGAGGATCTGGCAGCAAATGATATCCTGGATT  
 ACAAGGATGACGACGATAAGGTTTAA

**Protein Sequence:** >RC222622 representing NM\_013286  
 Red=Cloning site Green=Tags(s)

```

MKRQSERDSSPSGRGSSSSAKRPREREREAEAGRRAAHKASGGAKHPVPARARDKPRGSGSGGGGHRDG
RGTGDANHRASSRSGSGAGGGGRGKASGDPGASGMSPRASPLPPPPPPGAEPACPGSSAAAEYKT
LLISSLSPALPAEHLEDRLFHQFKRFGELSLRLSHTPELGRVAYVNFHRPQDAREARQHALARQLLLYDR
PLKVEPVYLRGGGSSRRSSSSAAASTPPPGPPAPADPLGYLPLHGGYQYKQRSLSPVAAPPLREPRAR
HAAAAFALDAAAAAAVGLSRERALDYGLYDDRGRPYGYPAVCEEDLMPEDDQRATRNLFIGNLDHSVSE
VELRRAFEKYGIIEEVVIKRPARQGQYAF LKFQNLDMAHRAKVAMSGRVIGRNPIKIGYKANTPTTRL
WVGGLGPNTSLAALAREFDRFGSIRTIDHVKGDSFAYIQYESLDAQAACAKMRGFPLGGPDRRLRVDF
KAEETRYQQYQPSPLPVHYELLTDGYTRHRNLDADLVRDRTPPHLLYSRDRRTFLEGDWTSKSSDRR
NSLEGYSRSVRSRGERWGADGRGLPKPWEERRKRRSLSSDRGRTHSPYEERSRTKSGSQSERGSDR
TPERSRKENHSSEGTKESSNSLSNSRHGAEERGHHEAADSSHGKKARDSERNHRTTEAEPKPLEE
PKHETKKLKNLSEYAQTLQLGWNGLLVLKNSCFPTSMHILEGDQGVISLLKDHTSGSKLTQLKIAQRLR
LDQPKLDEVTRRIKQGSPNGYAVLLATQATPSGLGTEGMPTVEPLQRRLLRNLVSYLKQKQAAGVISLP
VGGSKGRDGTGMLYAFPPCDFSQYLQALRTLKLEEEHMIIVIVRDTA
  
```

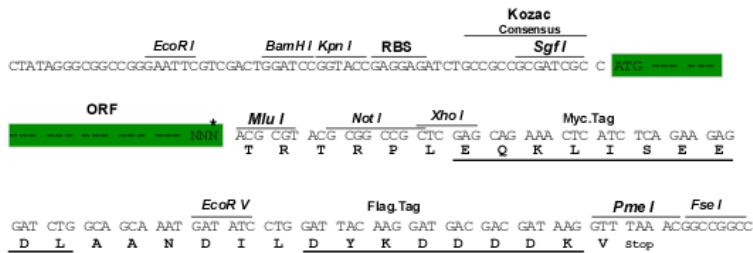
TRTRPLEQKLISEEDLAANDILDYKDDDDKV

**Chromatograms:** [https://cdn.origene.com/chromatograms/mk8040\\_f10.zip](https://cdn.origene.com/chromatograms/mk8040_f10.zip)

**Restriction Sites:** SgfI-MluI

**Cloning Scheme:**

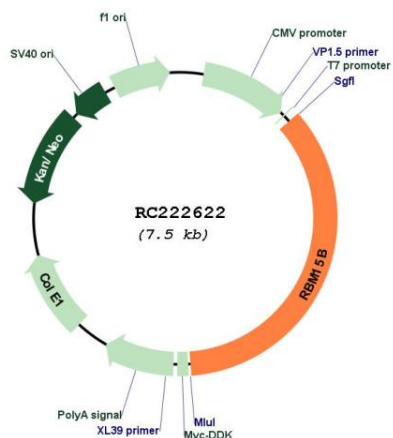
Cloning sites used for ORF Shuttling:



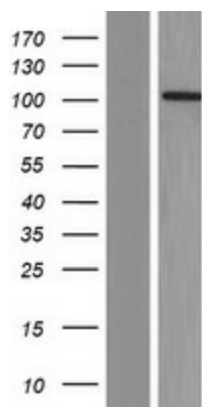
**ACCN:** NM\_013286

<b>ORF Size:</b>	2670 bp
<b>OTI Disclaimer:</b>	The molecular sequence of this clone aligns with the gene accession number as a point of reference only. However, individual transcript sequences of the same gene can differ through naturally occurring variations (e.g. polymorphisms), each with its own valid existence. This clone is substantially in agreement with the reference, but a complete review of all prevailing variants is recommended prior to use. <a href="#">More info</a>
<b>OTI Annotation:</b>	This clone was engineered to express the complete ORF with an expression tag. Expression varies depending on the nature of the gene.
<b>Components:</b>	The ORF clone is ion-exchange column purified and shipped in a 2D barcoded Matrix tube containing 10ug of transfection-ready, dried plasmid DNA (reconstitute with 100 ul of water).
<b>Reconstitution Method:</b>	<ol style="list-style-type: none"><li>1. Centrifuge at 5,000xg for 5min.</li><li>2. Carefully open the tube and add 100ul of sterile water to dissolve the DNA.</li><li>3. Close the tube and incubate for 10 minutes at room temperature.</li><li>4. Briefly vortex the tube and then do a quick spin (less than 5000xg) to concentrate the liquid at the bottom.</li><li>5. Store the suspended plasmid at -20°C. The DNA is stable for at least one year from date of shipping when stored at -20°C.</li></ol>
<b>RefSeq:</b>	<a href="#">NM_013286.5</a>
<b>RefSeq Size:</b>	6620 bp
<b>RefSeq ORF:</b>	2673 bp
<b>Locus ID:</b>	29890
<b>UniProt ID:</b>	<a href="#">Q8NDT2</a>
<b>Cytogenetics:</b>	3p21.2
<b>Protein Families:</b>	Transcription Factors
<b>MW:</b>	97 kDa
<b>Gene Summary:</b>	Members of the SPEN (Split-end) family of proteins, including RBM15B, have repressor function in several signaling pathways and may bind to RNA through interaction with spliceosome components (Hiriart et al., 2005 [PubMed 16129689]).[supplied by OMIM, Feb 2009]

Product images:



Circular map for RC222622



Western blot validation of overexpression lysate (Cat# [LY415684]) using anti-DDK antibody (Cat# [TA50011-100]). Left: Cell lysates from untransfected HEK293T cells; Right: Cell lysates from HEK293T cells transfected with RC222622 using transfection reagent MegaTran 2.0 (Cat# [TT210002]).