

Product datasheet for RC222615

C1GALT1C1 (NM_001011551) Human Tagged ORF Clone

Product data:

| | |
|---------------------------|---|
| Product Type: | Expression Plasmids |
| Product Name: | C1GALT1C1 (NM_001011551) Human Tagged ORF Clone |
| Tag: | Myc-DDK |
| Symbol: | C1GALT1C1 |
| Synonyms: | C1GALT2; C38H2-L1; COSMC; HSPC067; MST143; TNPS |
| Mammalian Cell Selection: | Neomycin |
| Vector: | pCMV6-Entry (PS100001) |
| E. coli Selection: | Kanamycin (25 ug/mL) |
| ORF Nucleotide Sequence: | >RC222615 ORF sequence Red=Cloning site Blue=ORF Green=Tags(s) |

TTTTGTAATACGACTCACTATAGGGCGGCCGGAATTCGTCGACTGGATCCGGTACCGAGGAGATCTGCC
GCC**CGATCGCC**

ATGCTTTCTGAAAGCAGCTCCTTTTTGAAGGGTGTGATGCTTGGAAAGCATTCTGTGCTTTGATCACTA
TGCTAGGACACATTAGGATTGGTCATGGAAATAGAATGCACCACCATGAGCATCATCACCTACAAGCTCC
TAACAAAGAAGATATCTGAAAATTTAGAGGATGAGCGCATGGAGCTCAGTAAGAGCTTTCGAGTATAC
TGTATTATCCTTGAAAACCCAAAGATGTGAGTCTTTGGGCTGCAGTAAAGGAGACTTGGACCAAACT
GTGACAAAAGCAGAGTTCTTCAGTTCTGAAAATGTTAAAGTGTGAGTCAATTAATGGACACAAATGA
CATGTGGTTAATGATGAGAAAAGCTTACAAATACGCCTTTGATAAGTATAGAGACCAATACAAGTGGTTC
TTCCTTGACGCCCCACTACGTTTGCTATCATTGAAAACCTAAAGTATTTTTGTTAAAAAGGATCCAT
CACAGCCTTTCTATCTAGGCCACACTATAAAATCTGGAGACCTTGAATATGTGGGTATGGAAGGAGGAAT
TGTCTTAAGTGTAGAATCAATGAAAAGACTTAACAGCCTTCTCAATATCCAGAAAAGTGTCTGAACAG
GGAGGGATGATTTGGAAGATATCTGAAGATAAACAGCTAGCAGTTGCCTGAAATATGCTGGAGTATTTG
CAGAAAATGCAGAAGATGCTGATGGAAGATGATTTAATACCAATCTGTTGGGCTTCTATTAAGA
GGCAATGACTTATCACCCCAACCAGGTAGTAGAAGGCTGTTGTTTCAGATATGGCTGTTACTTTTAATGGA
CTGACTCCAAATCAGATGCATGTGATGATGTTGGGTATACCGCCTTAGGGCATTGGGCATATTTTCA
ATGATGCATTGGTTTTCTTACCTCCAAATGGTTCTGACAATGAC

ACGCGTACGCGGCCGCTCGAGCAGAAACTCATCTCAGAAGAGGATCTGGCAGCAAATGATATCCTGGATT
ACAAGGATGACGACGATAAGGTTTAA



[View online »](#)

Protein Sequence: >RC222615 protein sequence
Red=Cloning site Green=Tags(s)

MLSESSSFLKGVMLGSIFCALITMLGHIRIGHGNRMHHHEHHHLQAPNKEDILKISEDERMELSKSFRVY
 CIILVKPKDVSLWAAVKETWTKHCDKAEFFSSENVKVFESINMDTNDMWLMMRKAYKYAFDKYRDQYNWF
 FLARPTTFAIENLKYFLLKKDPSQPFYLGHTIKSGDLEYVGMGGIVL SVESMKRLNLLNIPEKCP
 EQ GGMIWKISEDKQLAVCLKYAGVFAENAEDADGKDVFNKSVGLSIKEAMTYHPNQVVEGCCSDMAVTFNG
 LTPNQMHVMMYGVYRLRAFGHIFNDALVFLPPNGSDND

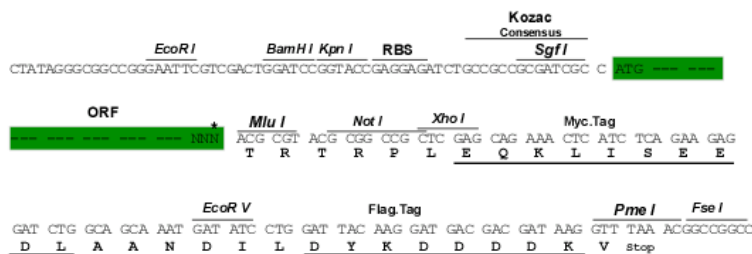
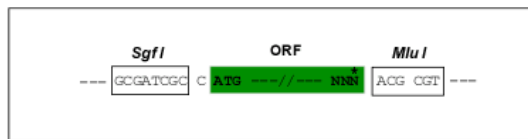
TRTRPLEQKLISEEDLAANDILDYKDDDDKV

Chromatograms: https://cdn.origene.com/chromatograms/mk6350_f10.zip

Restriction Sites: SgfI-MluI

Cloning Scheme:

Cloning sites used for ORF Shuttling:



* The last codon before the Stop codon of the ORF

ACCN: NM_001011551

ORF Size: 954 bp

OTI Disclaimer: The molecular sequence of this clone aligns with the gene accession number as a point of reference only. However, individual transcript sequences of the same gene can differ through naturally occurring variations (e.g. polymorphisms), each with its own valid existence. This clone is substantially in agreement with the reference, but a complete review of all prevailing variants is recommended prior to use. [More info](#)

OTI Annotation: This clone was engineered to express the complete ORF with an expression tag. Expression varies depending on the nature of the gene.

Components: The ORF clone is ion-exchange column purified and shipped in a 2D barcoded Matrix tube containing 10ug of transfection-ready, dried plasmid DNA (reconstitute with 100 ul of water).

Reconstitution Method:

1. Centrifuge at 5,000xg for 5min.
2. Carefully open the tube and add 100ul of sterile water to dissolve the DNA.
3. Close the tube and incubate for 10 minutes at room temperature.
4. Briefly vortex the tube and then do a quick spin (less than 5000xg) to concentrate the liquid at the bottom.
5. Store the suspended plasmid at -20°C. The DNA is stable for at least one year from date of shipping when stored at -20°C.

RefSeq: [NM_001011551.3](#)

RefSeq Size: 1743 bp

RefSeq ORF: 957 bp

Locus ID: 29071

UniProt ID: [Q96EU7](#)

Cytogenetics: Xq24

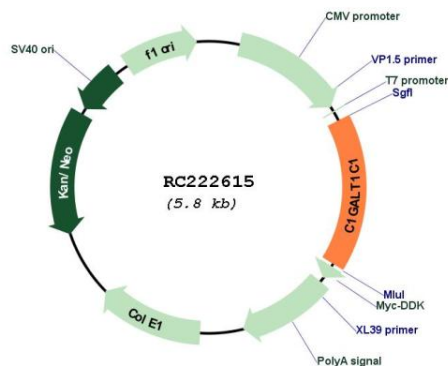
Protein Families: Transmembrane

Protein Pathways: Metabolic pathways, O-Glycan biosynthesis

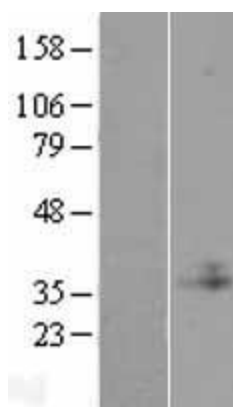
MW: 36.4 kDa

Gene Summary: This gene encodes a type II transmembrane protein that is similar to the core 1 beta1,3-galactosyltransferase 1, which catalyzes the synthesis of the core-1 structure, also known as Thomsen-Friedenreich antigen, on O-linked glycans. This gene product lacks the galactosyltransferase activity itself, but instead acts as a molecular chaperone required for the folding, stability and full activity of the core 1 beta1,3-galactosyltransferase 1. Mutations in this gene have been associated with Tn syndrome. Alternatively spliced transcript variants encoding the same protein have been identified. [provided by RefSeq, Dec 2009]

Product images:



Circular map for RC222615



Western blot validation of overexpression lysate (Cat# [LY423277]) using anti-DDK antibody (Cat# [TA50011-100]). Left: Cell lysates from untransfected HEK293T cells; Right: Cell lysates from HEK293T cells transfected with RC222615 using transfection reagent MegaTran 2.0 (Cat# [TT210002]).