

Product datasheet for **RC222613**

LDHD (NM_194436) Human Tagged ORF Clone

Product data:

Product Type:	Expression Plasmids
Product Name:	LDHD (NM_194436) Human Tagged ORF Clone
Tag:	Myc-DDK
Symbol:	LDHD
Synonyms:	DLACD; DLD
Mammalian Cell Selection:	Neomycin
Vector:	pCMV6-Entry (PS100001)
E. coli Selection:	Kanamycin (25 ug/mL)



[View online »](#)

ORF Nucleotide Sequence:

>RC222613 representing NM_194436
 Red=Cloning site Blue=ORF Green=Tags(s)

TTTTGTAATACGACTCACTATAGGGCGGCCGGAATTCGTCGACTGGATCCGGTACCGAGGAGATCTGCC
 GCC**GCGATCGCC**

ATGGCCCGACTGCTCAGGTCTGCAACCTGGGAGCTGTTCCCTGGAGGGCTACTGCTCCCAGAAGGCAA
 AGGGAGAGCTCTGCAGGGACTTCGTAGAGGCTCTGAAGGCCGTGGTGGGCGGCTCCACAGTGTCCACTGC
 CGCGGTGGTCCGAGAGCAGCACGGGCGCGATGAGTCGGTGCACAGGTGCGAACCTCCTGATGCTGTGGTG
 TGGCCCCAGAACGTGGAGCAGGTGAGCCGGCTGGCAGCCCTGTGCTATCGCCAAGGTGTGCCATCATCC
 CATTTCGGCACCAGCACCGGGCTTGGGGTGGCGTCTGTGCTGTGCAGGGCGGCTCTGCGTTAACCTGAC
 GCATATGGACCGAATCCTGGAGCTGAACCAGGAGGACTTCTGTGGTGGTGGAGCCAGGTGTACCCCGC
 AAAGCCCTCAACGCCACCTGCGGGACAGCGGCTCTGGTTTCCCGTGGACCCAGGCGGGACGCGCTCTC
 TCTGTGGCATGGCGGCCACCGGGCGTGGGGACCAACCGGTCCGCTACGGCACCATGCGGGACAACGT
 GCTCAACCTGGAGGTGGTGTGCTGCCGACGGGCGGCTGCTGCACACGGCGGCGGAGCCGGCATTTCGGG
 AAGAGTGCAGCCGGCTACAACCTCACGGGGCTTTCGTGGGCTCCGAGGGGACGCTGGGCGCTCATCACAG
 CCACCACCTGCGCCTGCACCCTGCCCTGAGGCCACAGTGGCCGCCACGTGTGCGTTCCCCAGTGTCCA
 GGCTGCTGTGGACAGCACTGTACACATCTCCAGGCTGCAGTGCCCGTAGCCCGCATTGAGTTTCTGGAT
 GAAGTCATGATGGATGCCTGCAACAGGTACAGCAAGCTGAATTGCTTAGTGGCGCCACACTTTCCTGG
 AGTTCCATGGCTCCCAGCAGGCACTGGAGGAGCAGCTGCAGCGCACAGAGGAGATAGTCCAGCAGAACGG
 AGCCTCTGACTTCTCTGGGCAAGGAGCCGAGGAGCGCAGCCGGCTTGGACAGCACGGCACAATGCC
 TGGTACGACGCCCTGGCCACGCGGCCAGGCTGCAAGGGCTACTCCACGGATGTGTGTGTGCCATCTCCC
 GGCTGCCGGAGATCGTGGTGCAGACCAAGGAGGATCTGAATGCCTCAGGACTCACAGGAAGCATTGTCCG
 GCATGTGGGTGACGGCAACTTCCACTGCATCCTGCTGGTCAACCCTGATGACGCCGAGGAACCTGGGACGG
 GTCAAGGCTTTTGCAGAACAGCTGGGCAGGCGGCACTGGCTCTCCACGGAACGTGCACGGGGGAGCATG
 GCATCGGAATGGCAAGCGGCAGCTGCTGCAGGAGGAGTGGGCGCCGTGGGCGTGGAGACCATGCGGCA
 GCTCAAGGCCGTGCTAGACCCCCAAGGCCTCATGAATCCAGGCAAAGTGCTG

ACGCGTACGCGGCCGCTCGAGCAGAACTCATCTCAGAAGAGGATCTGGCAGCAAATGATATCTGGATT
 ACAAGGATGACGACGATAAGGTTTAA

Protein Sequence:

>RC222613 representing NM_194436
 Red=Cloning site Green=Tags(s)

MARLLRSATWELFPWRGYCSQKAKGELCRDFVEALKAVVGGSHVSTAADVREQHGRRDESVHRCEPPDAVV
 WPQNVEQVSRALALCYRQGVPIIPFGTGTLEGGVCAVQGGVCVNLTHMDRILELNQEDFSVVVEPGVTR
 KALNAHLRDSGLWFPVDPGADASLCGMAATGASGTNAVRYGTMRDVNLNLEVVLPDGRLLHTAGRGRHFR
 KSAAGYNLTGLFVGSEGLGLITATTLRLHPAPEATVAATCAFPVQAQAVDSTVHILQAAPVVARIEFLD
 EVMMDACNRYSKLNCLVAPTLFLEFHGSQQALEEQLQRTEEIVQQNGASDFSWAKEAEERSRLWTRHNA
 WYAALATRPGCKGYSTDVCPISRLPEIVVQTKEDLNASGLTGSIVGHVGDGNFHCILLVNPDDAEELGR
 VKFAAEQLGRRALALHGTCTGEHIGMGRQLLQEEVGAVGVETMRQLKAVLDPQGLMNPQKVL

TRTRPLEQKLISEEDLAANDILDYKDDDDKV

Chromatograms:

https://cdn.origene.com/chromatograms/mk8040_d01.zip

Restriction Sites:

Sgfl-Mlul

Cloning Scheme:

Cloning sites used for ORF Shutting:


ACCN: NM_194436

ORF Size: 1452 bp

OTI Disclaimer: The molecular sequence of this clone aligns with the gene accession number as a point of reference only. However, individual transcript sequences of the same gene can differ through naturally occurring variations (e.g. polymorphisms), each with its own valid existence. This clone is substantially in agreement with the reference, but a complete review of all prevailing variants is recommended prior to use. [More info](#)

OTI Annotation: This clone was engineered to express the complete ORF with an expression tag. Expression varies depending on the nature of the gene.

Components: The ORF clone is ion-exchange column purified and shipped in a 2D barcoded Matrix tube containing 10ug of transfection-ready, dried plasmid DNA (reconstitute with 100 ul of water).

Reconstitution Method:

1. Centrifuge at 5,000xg for 5min.
2. Carefully open the tube and add 100ul of sterile water to dissolve the DNA.
3. Close the tube and incubate for 10 minutes at room temperature.
4. Briefly vortex the tube and then do a quick spin (less than 5000xg) to concentrate the liquid at the bottom.
5. Store the suspended plasmid at -20°C. The DNA is stable for at least one year from date of shipping when stored at -20°C.

RefSeq: [NM_194436.3](#)
RefSeq Size: 2022 bp

RefSeq ORF: 1455 bp

Locus ID: 197257

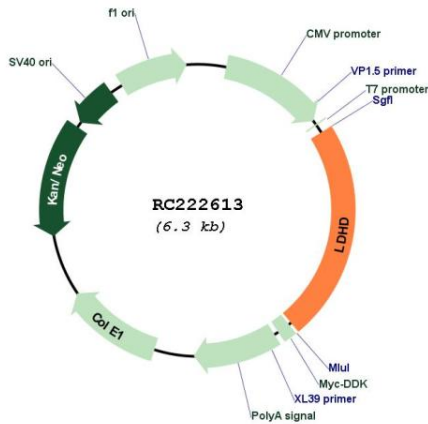
UniProt ID: [Q86WU2](#)
Cytogenetics: 16q23.1

Protein Pathways: Pyruvate metabolism

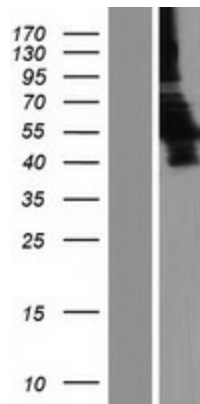
MW: 50 kDa

Gene Summary: The protein encoded by this gene belongs to the D-isomer specific 2-hydroxyacid dehydrogenase family. The similar protein in yeast has both D-lactate and D-glycerate dehydrogenase activities. Alternative splicing occurs at this locus and two transcript variants encoding distinct isoforms have been identified. [provided by RefSeq, Jul 2008]

Product images:



Circular map for RC222613



Western blot validation of overexpression lysate (Cat# [LY405129]) using anti-DDK antibody (Cat# [TA50011-100]). Left: Cell lysates from untransfected HEK293T cells; Right: Cell lysates from HEK293T cells transfected with RC222613 using transfection reagent MegaTran 2.0 (Cat# [TT210002]).