

Product datasheet for **RC222609**

USP16 (NM_006447) Human Tagged ORF Clone

Product data:

Product Type:	Expression Plasmids
Product Name:	USP16 (NM_006447) Human Tagged ORF Clone
Tag:	Myc-DDK
Symbol:	USP16
Synonyms:	UBP-M; UBPM
Mammalian Cell Selection:	Neomycin
Vector:	pCMV6-Entry (PS100001)
E. coli Selection:	Kanamycin (25 ug/mL)



[View online »](#)

**ORF Nucleotide
Sequence:**

>RC222609 representing NM_006447
 Red=Cloning site Blue=ORF Green=Tags(s)

TTTTGTAATACGACTCACTATAGGGCGGCCGGAATTCGTCGACTGGATCCGGTACCGAGGAGATCTGCC
 GCC**CGGATCGCC**

ATGGGAAAGAAACGGACAAAGGGAAAACTGTTCCAATCGATGATTCCTCTGAAACTTTAGAACCTGTGT
 GCAGACACATTAGAAAAGGATTGGAACAAGGTAATTTGAAAAAGGCTTTAGTGAATGTGGAATGGAATAT
 CTGCCAAGACTGTAAGACTGACAATAAAGTGAAAGATAAAGCTGAAGAAGAAACAGAAGAAAAGCCTTCA
 GTTTGGCTGTGTCTTAAATGTGGCCATCAGGGCTGTGGCAGAAATTCAGGAGCAGCATGCCTTGAAGC
 ACTATCTGACGCCAAGATCTGAACCTCACTGTCTGGTTCTTAGTTTGGACAACCTGGAGTGTATGGTGTTA
 CGTATGTGATAATGAGGTCCAGTATTGTAGTTCAAACCAGTTGGGTCAAGTGGTTGATTATGTCAGAAAA
 CAAGCCAGCATTACAACCCAAAGCCAGCAGAGAAAGATAATGGAATATTGAACTTGAATAAAAAAT
 TAGAAAAAGAGAGTAAGAATGAACAAGAGAGAGAAAAGAAGGAAAACATGGCTAAAGAGAATCCTCCCAT
 GAATTCTCCTTGCCAAATAACCGTGAAAGGACTCAGTAATTTGGGAAACACATGTTTCTTCAATGCAGTT
 ATGCAGAACTTGTCAAAACACCAAGTGTAGAGAACTACTAAAAGAAGTGAATAATGCTGGAACAATTG
 TAAAAATTGAACCACCTGATTTGGCATTAAACAGAACCTTAGAAAATAAACCTTGAGCCTCCAGGCCCTCT
 TACTTTAGCCATGAGCCAGTTTCTTAATGAGATGCAAGAGACAAAAAGGGGTTGTGACACCGAAAAGAA
 CTCTTTTCTCAGGTCTGTAAAAAGCAGTGCAGTTTAAAGGCTATCAGCAGCAAGACAGCCAGGAGCTGC
 TTCGCTACTTATTGGATGGGATGAGAGCAGAAGAACACCAAGAGTGAGTAAAGGAATACTTAAAGCATT
 TGGTAATTTCTACTGAAAAGTTGGATGAAGAATAAAAAATAAAGTTAAAGATTATGAGAAGAAAAATCA
 ATGCCAAGTTTGTGACCGCATCTTTGGTGGTGAACCTAACTAGTATGATCATGTGTGATCAATGAGAGAA
 CTGTCTCCTTGGTTCATGAATCTTTCTTGTATTTGTCCTCCAGTTTGTAGATGATCAGAGTGGTAAGAA
 AAGTGTAAATGATAAAAACTGAAAAAGACAGTGGAGGATGAAGATCAAGATAGTGAGGAAGAAAAAGAT
 AACGCAGTTACATAAAAGAGAGAGTGTATTCTTCTGGAACAAGTAAGCACTTACAGAAAAAGCAAA
 AGAAAACAGCCAAAAAGCAAGCCAAAGAACAACGAAGACAACAAAAAATCAAGGAAAAGTTCTTCATTT
 AAATGATATTTGTACTATTGACCATCTGAAGACAGTGAATATGAAGCTGAAATGCACTTCAAGGAGAA
 GTAAATATTAATCCAACCATTTTCAAGAGGGTGTATGCATAAAGAATATTGTGTCAACCAGAAAAG
 ATTTGAATGGCCAAAGCAAAATGATCGAAAGTGAACCTGACAATCAAAAAATCCACAGAGGAAGTAGATAT
 GAAAAATATCAACATGGATAATGATCTGGAGTTTTAACATCTTCTCCCACTAGGAATTTAATGGTGCC
 TACCTAACGGAAGGGAGCAATGGAGAAGTGGACATTTCCAATGGTTTCAAAAACCTAAATTTGAATGCTG
 CTCTTCATCCTGATGAAATAAATATAGAGATTCTGAATGATAGTCATACTCCTGGAACAAAAGGTGTATGA
 GTTGTAATGAAGATCCAGAACTGCTTCTGTACTCTTGCAAAACAGGGAAGTTTTCAATACTGATGAG
 GTTTCAATCCAACATTGTTTATATCAGTTCACCCGTAATGAGAACTTCGAGATGCGAATAAACTGCTTT
 GTGAAGTATGCACACGGAGACAGTGAATGGACCAAGGCAAAATATAAAGGTGAAAGGAAGCATGTTTA
 CACCAATGCCAAAAAGCAGATGCTAATTTCTTGTCTCCTCTGTTCTTACTCTTCATTTAAGAGATTT
 CAGCAGGCTGGTTTTAACCTACGCAAAGTTAACAAACACATAAAGTTTCCGGAATCTTAGATTTGGCTC
 CTTTTTGCACCCTTAAATGTAAGAATGTTGCAGAAGAAAAACAAGGGTACTCTATTCTTATATGGAGT
 TGTTGAACACAGTGGTACTATGAGGTGGGGCATTACACTGCCTATGCCAAGCAAGAACCAGCAAAATAGT
 CATCTCTAATCTTGTCTTACGGTGTATTCCACAAGATTTTGAATGGAATCAAAAGGGCAGTGGT
 TTCACATCAGCGACACACATGTGAAGCTGTGCCTACAACCTAAAGTACTAACTACAAGCGTACCTCCT
 ATTTTATGAGAGAATACTG

ACGCGTACGCGGCCGCTCGAGCAGAACTCATCTCAGAAGAGGATCTGGCAGCAATGATATCCTGGATT
 ACAAGGATGACGACGATAAGGTTTAA

Protein Sequence: >RC222609 representing NM_006447
Red=Cloning site Green=Tags(s)

MGKKRTKGKTVPIDDSSSETLEPVCRRHIRKGLEQGNLKKALVNVEWNICQDCKTDNKVKDKAEETEETEEKPS
VWLCLKCGHQGCGRNSQEQHALKHLYLTPRSEPHCLVLSLDNWSVWCYVCDNEVQYCSSNQLGQVVDYVRK
QASITTPKPAEKDNGNIELENKKLEKESKNEQEREKKENMAKENPPMNSPCQITVKGLSNLGNLTCFFNAV
MQNLSTQTPVLRRELLKEVKMSGTIVKIEPPDLALTEPLEINLEPPGPLTLAMSQFLNEMQETKKGVVTPKE
LFSQVCKKAVRFKGYQQQDSQELLRYLLDGMRAEEHQRVSKGILKAFGNSTEKLEELKNKVVDYKSKS
MPSFVDRIFGGELTSMIMCDQCRTVSLVHESFLDLSLPVLDQSGKKSVDKLNKKTVEDEDQDSEEEKD
NDSYIKERSDIPSGTSKHLQKKAKKQAKKQAKNQRQKIQGKVLHLNDICTIDHPEDSEYEAMSLQGE
VNIKSNHISQEGVMHKEYCVNQDLNGQAKMIESVTDNQKSTEEVDMKNINMDNDLEVLTSSTRNLNGA
YLTEGSNGEVDISNGFKNLNLNAALHPDEINIEILNDSHTPGTKVYEVVNEPETAFACTLANREVFNTDE
CSIQHCLYQFTRNEKLRDANKLLCEVCTRRQCNGPKANIKGERKHVYTNAKKQMLISLAPPVLTLLKRF
QQAGFNLKRVNKHIFPEILDLPFCTLKCKNVAEENTRVLYSLYGVVEHSGTMRSGHYTAYAKARTANS
HLSNLVLHGDIPQDFEMESKGQWFHISDTHVQAVPTTKVLNSQAYLLFYERIL

TRTRPLEQKLISEEDLAANDILDYKDDDDKV

Chromatograms: https://cdn.origene.com/chromatograms/mk6280_g02.zip

Restriction Sites: Sgfl-Mlul

Reconstitution Method:

1. Centrifuge at 5,000xg for 5min.
2. Carefully open the tube and add 100ul of sterile water to dissolve the DNA.
3. Close the tube and incubate for 10 minutes at room temperature.
4. Briefly vortex the tube and then do a quick spin (less than 5000xg) to concentrate the liquid at the bottom.
5. Store the suspended plasmid at -20°C. The DNA is stable for at least one year from date of shipping when stored at -20°C.

RefSeq: [NM_006447.3](#)

RefSeq Size: 2989 bp

RefSeq ORF: 2472 bp

Locus ID: 10600

UniProt ID: [Q9Y5T5](#)

Cytogenetics: 21q21.3

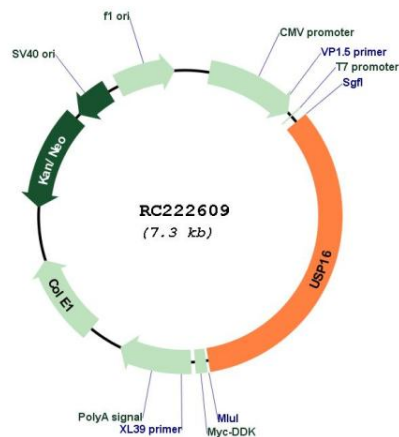
Domains: UCH, zf-UBP

Protein Families: Protease

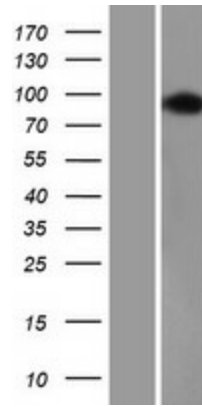
MW: 93.4 kDa

Gene Summary: This gene encodes a deubiquitinating enzyme that is phosphorylated at the onset of mitosis and then dephosphorylated at the metaphase/anaphase transition. It can deubiquitinate H2A, one of two major ubiquitinated proteins of chromatin, in vitro and a mutant form of the protein was shown to block cell division. Alternate transcriptional splice variants, encoding different isoforms, have been characterized. [provided by RefSeq, Jul 2008]

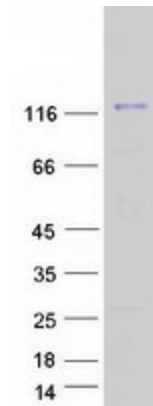
Product images:



Circular map for RC222609



Western blot validation of overexpression lysate (Cat# [LY416633]) using anti-DDK antibody (Cat# [TA50011-100]). Left: Cell lysates from untransfected HEK293T cells; Right: Cell lysates from HEK293T cells transfected with RC222609 using transfection reagent MegaTran 2.0 (Cat# [TT210002]).



Coomassie blue staining of purified USP16 protein (Cat# [TP322609]). The protein was produced from HEK293T cells transfected with USP16 cDNA clone (Cat# RC222609) using MegaTran 2.0 (Cat# [TT210002]).