

Product datasheet for RC222603L1

LRR8C (NM_032270) Human Tagged Lenti ORF Clone

Product data:

Product Type:	Expression Plasmids
Product Name:	LRR8C (NM_032270) Human Tagged Lenti ORF Clone
Tag:	Myc-DDK
Symbol:	LRR8C
Synonyms:	AD158; FAD158
Mammalian Cell Selection:	None
Vector:	pLenti-C-Myc-DDK (PS100064)
E. coli Selection:	Chloramphenicol (34 ug/mL)
ORF Nucleotide Sequence:	The ORF insert of this clone is exactly the same as(RC222603).
Restriction Sites:	SgfI-MluI
Cloning Scheme:	

Cloning sites used for ORF Shuttling:



* The last codon before the Stop codon of the ORF.

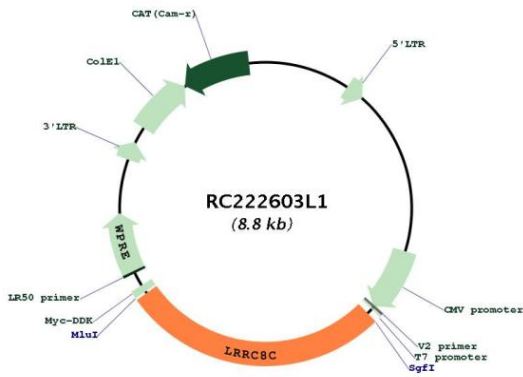
ACCN:	NM_032270
ORF Size:	2409 bp



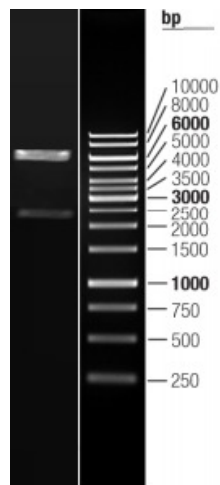
[View online »](#)

OTI Disclaimer:	The molecular sequence of this clone aligns with the gene accession number as a point of reference only. However, individual transcript sequences of the same gene can differ through naturally occurring variations (e.g. polymorphisms), each with its own valid existence. This clone is substantially in agreement with the reference, but a complete review of all prevailing variants is recommended prior to use. More info
OTI Annotation:	This clone was engineered to express the complete ORF with an expression tag. Expression varies depending on the nature of the gene.
Components:	The ORF clone is ion-exchange column purified and shipped in a 2D barcoded Matrix tube containing 10ug of transfection-ready, dried plasmid DNA (reconstitute with 100 ul of water).
Reconstitution Method:	<ol style="list-style-type: none">1. Centrifuge at 5,000xg for 5min.2. Carefully open the tube and add 100ul of sterile water to dissolve the DNA.3. Close the tube and incubate for 10 minutes at room temperature.4. Briefly vortex the tube and then do a quick spin (less than 5000xg) to concentrate the liquid at the bottom.5. Store the suspended plasmid at -20°C. The DNA is stable for at least one year from date of shipping when stored at -20°C.
RefSeq:	NM_032270.2
RefSeq Size:	7207 bp
RefSeq ORF:	2412 bp
Locus ID:	84230
UniProt ID:	Q8TDW0
Cytogenetics:	1p22.2
Domains:	LRR, LRR_TYP, LRR_PS
Protein Families:	Transmembrane
MW:	92.4 kDa
Gene Summary:	Non-essential component of the volume-regulated anion channel (VRAC, also named VSOAC channel), an anion channel required to maintain a constant cell volume in response to extracellular or intracellular osmotic changes. The VRAC channel conducts iodide better than chloride and can also conduct organic osmolytes like taurine. Plays a redundant role in the efflux of amino acids, such as aspartate and glutamate, in response to osmotic stress. Channel activity requires LRRRC8A plus at least one other family member (LRRRC8B, LRRRC8C, LRRRC8D or LRRRC8E); channel characteristics depend on the precise subunit composition. [UniProtKB/Swiss-Prot Function]

Product images:



Circular map for RC222603L1



Double digestion of RC222603L1 using SgfI and MluI