

Product datasheet for **RC222596**

PLGLB1 (PLGLB2) (NM_002665) Human Tagged ORF Clone

Product data:

Product Type: Expression Plasmids
Product Name: PLGLB1 (PLGLB2) (NM_002665) Human Tagged ORF Clone
Tag: Myc-DDK
Symbol: PLGLB1
Synonyms: PLGLA; PLGLA1; PLGP1; PLGP2; PRGA
Mammalian Cell Selection: Neomycin
Vector: pCMV6-Entry (PS100001)
E. coli Selection: Kanamycin (25 ug/mL)
ORF Nucleotide Sequence: >RC222596 ORF sequence
Red=Cloning site Blue=ORF Green=Tags(s)

TTTTGTAATACGACTCACTATAGGGCGCCGGAATTCGTCGACTGGATCCGGTACCGAGGAGATCTGCC
GCC**CGATCGCC**

ATGGAACATAAGGAAGTGGTCTTCTACTTCTTTTATTCTGAAATCAGGTCAAGGAGAGCCCCTGGATG
ACTATGTGAATACCCAGGGCCCTCACTGTTCACTGTCAGTCTACTAAGAAGCAGCTGGGGCAGGAAGCAGAGA
AGAATGTGCAGCAAATGTGAAGAGGACAAAGAATTCACCTGCAGGGCATTCCAATATCACAGTAAAGAG
CAACAATGTGTGATAATGGCTGAAAACAGGAAGTCTCCATAATCATTAGGATGAGAGATGCAGTTTTAT
TTGAAAAG

ACGCGTACGCGGCCGCTCGAGCAGAACTCATCTCAGAAGAGGATCTGGCAGCAAATGATATCCTGGATT
ACAAGGATGACGACGATAAGGTTTAA

Protein Sequence: >RC222596 protein sequence
Red=Cloning site Green=Tags(s)
MEHKEVLLLLLLFLKSGQGEPLDDYVNTQGP SLF SVTKKQLGAGSREECAAKCEEDKEFTCRAFQYHSKE
QQCVIMAENRKSSIIIRMDAVLFEK

TRTRPLEQKLI SEEDLAANDILDYKDDDDKV

Chromatograms: https://cdn.origene.com/chromatograms/mk6416_d01.zip

Restriction Sites: SgfI-MluI



[View online »](#)

Cloning Scheme:


ACCN: NM_002665

ORF Size: 288 bp

OTI Disclaimer: The molecular sequence of this clone aligns with the gene accession number as a point of reference only. However, individual transcript sequences of the same gene can differ through naturally occurring variations (e.g. polymorphisms), each with its own valid existence. This clone is substantially in agreement with the reference, but a complete review of all prevailing variants is recommended prior to use. [More info](#)

OTI Annotation: This clone was engineered to express the complete ORF with an expression tag. Expression varies depending on the nature of the gene.

Components: The ORF clone is ion-exchange column purified and shipped in a 2D barcoded Matrix tube containing 10ug of transfection-ready, dried plasmid DNA (reconstitute with 100 ul of water).

- Reconstitution Method:**
1. Centrifuge at 5,000xg for 5min.
 2. Carefully open the tube and add 100ul of sterile water to dissolve the DNA.
 3. Close the tube and incubate for 10 minutes at room temperature.
 4. Briefly vortex the tube and then do a quick spin (less than 5000xg) to concentrate the liquid at the bottom.
 5. Store the suspended plasmid at -20°C. The DNA is stable for at least one year from date of shipping when stored at -20°C.

RefSeq: [NM_002665.4](#)

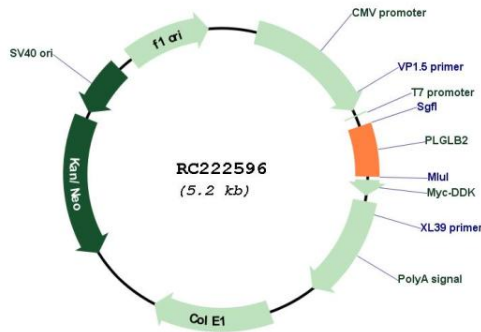
RefSeq Size: 3016 bp

RefSeq ORF: 291 bp

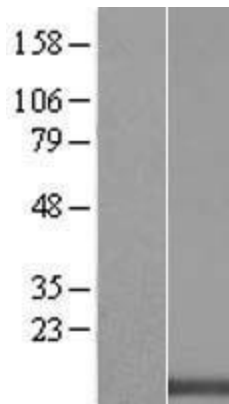
Locus ID: 5342

UniProt ID: [Q02325](#)
 Cytogenetics: 2p11.2
 Domains: PAN, PAN_AP
 Protein Families: Secreted Protein
 MW: 11 kDa

Product images:



Circular map for RC222596



Western blot validation of overexpression lysate (Cat# [LY419172]) using anti-DDK antibody (Cat# [TA50011-100]). Left: Cell lysates from untransfected HEK293T cells; Right: Cell lysates from HEK293T cells transfected with RC222596 using transfection reagent MegaTran 2.0 (Cat# [TT210002]).