

Product datasheet for **RC222592**

PTP alpha (PTPRA) (NM_002836) Human Tagged ORF Clone

Product data:

Product Type:	Expression Plasmids
Product Name:	PTP alpha (PTPRA) (NM_002836) Human Tagged ORF Clone
Tag:	Myc-DDK
Symbol:	PTP alpha
Synonyms:	HEPTP; HLPR; HPTPA; HPTPalpha; LRP; PTPA; PTPRL2; R-PTP-alpha; RPTPA
Mammalian Cell Selection:	Neomycin
Vector:	pCMV6-Entry (PS100001)
E. coli Selection:	Kanamycin (25 ug/mL)



[View online »](#)

ORF Nucleotide
Sequence:

>RC222592 representing NM_002836
 Red=Cloning site Blue=ORF Green=Tags(s)

TTTTGTAATACGACTCACTATAGGGCGGCCGGAATTCGTCGACTGGATCCGGTACCGAGGAGATCTGCC
 GCC**CGGATCGCC**

ATGGATTCCTGGTTCATTCTTGTCTGCTCGGCAGTGGTCTGATATGTGTCACTGCCAACATGCTACCA
 CAGTTGCACCTTCTGTAGGAATTAACAAGATTAATTAACATCAACGGCAGAACCAGTTAAAGAAGAGGC
 CAAAACCTCAAATCCAACCTTCTCACTAACTTCTTTTCTGTGGCACCAACATTCAGCCAAATATAACT
 CTGGGACCCACCTATTTAACCACTGTCAATTCTTCAGACTCTGACAATGGGACCACAAGAACAGCAAGCA
 CCAATTCTATAGGCATTACAATTCACCAAATGGAACGTGGCTTCCAGATAACCAGTTACGGATGCCAG
 AACAGAACCCTGGGAGGGGAATTCAGCACCGCAGCAACCCTCCAGAACTTCCCTCCTTCAGGTAAT
 TCTGACTCGAAGGACAGAAGAGATGAGACCAATTTGCGGTGATGGTGGCCCTGTCTCTCTGCTAG
 TGATCGTGTATTATCATAGTTTTGTACATGTTAAGGTTAAGAAATACAAGCAAGCTGGGAGCCATTC
 CAATTCTTCCGCTTATCCAACGGCCGACTGAGGATGTGGAGCCCAGAGTGTGCCACTCTGGCCAGA
 TCCCAAGCACCAACAGGAAATACCCACCCTGCCCGTGACAAGCTGGAAGAGGAAATTAACCGGAGAA
 TGGCAGACGACAATAAGCTCTTCAGGGAGGAATCAACGCTCTCCCTGCATGTCCTATCCAGGCCACCTG
 TGAGGCTGCTTCCAAGGAGGAAAACAAGGAAAAAATCGATATGTAACATCTTGCCCTATGACCACTCT
 AGAGTCCACCTGACACCGGTTGAAGGGTTCAGATTCTGATTACATCAATGCTTCATTCATCAACGGTT
 ACCAAGAAAAGAACAATTCATTGCTGCACAAGGACCAAAAAGAAGAAACGGTGAATGATTTCTGGCGGAT
 GATCTGGGAACAAAACACAGCCACCATCGTCATGGTTACCAACCTGAAGGAGAGAAAGGAGTGCAAGTGC
 GCCCAGTACTGGCAGACCAAGGCTGCTGGACCTATGGGAATATTCGGGTGTCTGTAGAGGATGTGACTG
 TCCTGGTGGACTACACAGTACGGAAGTTCTGCATCCAGCAGGTGGGCGACATGACCAACAGAAAACACA
 GCGCCTCACTCACTCAGTTCACCTTTACCAGCTGGCCAGACTTTGGGGTGCCTTTTACCCCGATCGGCATG
 CTAAGTTCTCAAGAAGGTGAAGGCTGTAACCTCAGTATGCAGGGGCCATCGTGGTCCACTGCAGTG
 CAGGTGTAGGGCTACAGGTACCTTTGTCGTATTGATGCCATGCTGGACATGATGCATACAGAACGGAA
 GGTGGACGTGATGGCTTTGTGAGCCGGATCCGGGCACAGCGCTGCCAGATGGTGCAAACCGATATGCAG
 TATGTCTTCATATACCAAGCCCTTCTGGAGCATTATCTCTATGGAGATACAGAACTGGAAGTGACCTCTC
 TAGAAACCCACCTGCAGAAAATTTACAACAAAATCCCAGGGACCAGCAACAATGGATTAGAGGAGGAGTT
 TAAGAAGTTAACATCAATCAAAATCCAGAATGACAAGATGCGGACTGGAACCTTCCAGCCAACATGAAG
 AAGAACCGTGTTTTACAGATCATTCCATATGAATTCACAGAGTGATCATTCCAGTTAAGCGGGGCGAAG
 AGAATACAGACTATGTGAACGCATCCTTTATTGATGGCTACCGGCAGAAGGACTCCTATATCGCCAGCCA
 GGGCCCTCTTCTCCACACAATTGAGGACTTCTGGCGAATGATCTGGGAGTGGAAATCCTGCTCTATCGTG
 ATGCTAACAGAACTGGAGGAGAGAGGCCAGGAGAAGTGTGCCAGTACTGGCCATCTGATGGACTGGTGT
 CCTATGGAGATATTACAGTGGAAGTGAAGAAGGAGGAGGAATGTGAGAGCTACACCGTCCGAGACCTCCT
 GGTACCAACACCAGGGAGAATAAGAGCCGGCAGATCCGGCAGTTCACCTCCATGGCTGGCCTGAAGTG
 GGCATCCCCAGTGACGAAAGGGCATGATCAGCATCATCGCCCGCGTGCAGAAGCAGCAGCAGCAGTCAG
 GGAACCACCCATCACCGTGCCTGCAGCGCCGGGCAGGAAGGACGGGGACCTTCTGTGCCCTGAGCAC
 CGTCTGGAGCGTGTAAAGCAGAGGGGATTTTGGATGTCTTCCAGACTGTCAAGAGCCTGCGGCTACAG
 AGGCCACACATGGTCCAGACACTGGAACAGTATGAGTTCTGCTACAAGGTGGTGCAGGAGTATATTGATG
 CATTCTCAGATTATGCCAACTTCAAG

ACGCGTACGCGGCCGCTCGAGCAGAACTCATCTCAGAAGAGGATCTGGCAGCAAATGATATCCTGGATT
 ACAAGGATGACGACGATAAGGTTTAA

Protein Sequence: >RC222592 representing NM_002836
Red=Cloning site Green=Tags(s)

MDSWFILVLLGSGLICVSANNATTVAPSVGITRLINSSTAEPVKEEAKTSNPTSSLTSLSVAPTFSPNIT
LGPTYLTTVNSSSDNGTTRTASTNSIGITISPNGTWLPDNQFTDARTEPWEGNSSTAATTPETFPSPGN
SDSKDRRDETPIIAVMVALSLLVIVFIIIVLYMLRFKKYKQAGSHSNFRLSNGRTEDVEPQSVPLLAR
SPSTNRKYPPLPVDKLEEEINRRMADDNKLFREEFNALPACPIQATCEAASKEENKEKNRYVNILPYDHS
RVHLTPVEGVPDSYINASFINGYQEKNFIAAQGPKEETVNDFWRMIWEQNTATIVMVTNLKERKECKC
AQYWPDQGCWTYGNIRVSVEDVTVLVDYTVRKFCIQVGDMTNRKPQRLITQFHFTSWPDFGVPFTPIGM
LKFLKKVKACNPQYAGAIVVHCSAGVGRGTGFVVIDAMLDMHTERKVDVYGFVSRIRARQCQMVTDMQ
YVFIYQALLEHYLYGDTELEVTSLETHLQKIYNKIPGTSNNGLEEEFKLTSIKIQNDKMRGNL PANMK
KNRVLQIIPYEFNRV IIPVKRGEENTDYVNASFIDGYRQKDSYIASQGPLLHTIEDFWRMIWEWKSCSIV
MLTELEERGQEKCAQYWPSDGLVSYGDIIVELKKEEESYTVRDLLVTNTRENKSRQIRQFHHGWPEV
GIPSDGKGMISIIAAVQKQQQSGNHPITVHCSAGAGRTGTF CALSTVLERVKAEGILDVVFQTVKSLRLQ
RPHMVQTLEQYEFQYKVVQYIDAFSDYANFK

TRTRPLEQKLI SEEDLAANDILDYKDDDDKV

Chromatograms: https://cdn.origene.com/chromatograms/mk6107_b03.zip

Restriction Sites: Sgfl-Mlul

Cloning Scheme:



ACCN: NM_002836

ORF Size: 2406 bp

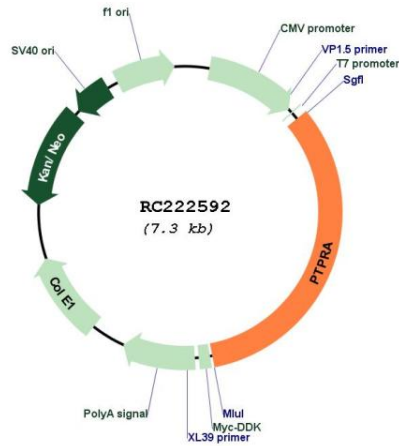
OTI Disclaimer: The molecular sequence of this clone aligns with the gene accession number as a point of reference only. However, individual transcript sequences of the same gene can differ through naturally occurring variations (e.g. polymorphisms), each with its own valid existence. This clone is substantially in agreement with the reference, but a complete review of all prevailing variants is recommended prior to use. [More info](#)

OTI Annotation: This clone was engineered to express the complete ORF with an expression tag. Expression varies depending on the nature of the gene.

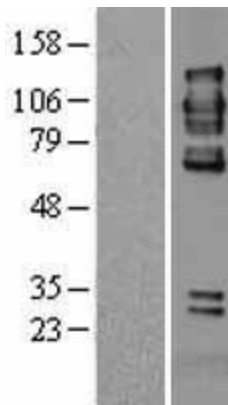
Components: The ORF clone is ion-exchange column purified and shipped in a 2D barcoded Matrix tube containing 10ug of transfection-ready, dried plasmid DNA (reconstitute with 100 ul of water).

Reconstitution Method:	<ol style="list-style-type: none">1. Centrifuge at 5,000xg for 5min.2. Carefully open the tube and add 100ul of sterile water to dissolve the DNA.3. Close the tube and incubate for 10 minutes at room temperature.4. Briefly vortex the tube and then do a quick spin (less than 5000xg) to concentrate the liquid at the bottom.5. Store the suspended plasmid at -20°C. The DNA is stable for at least one year from date of shipping when stored at -20°C.
RefSeq:	NM_002836.2 , NP_002827.1
RefSeq Size:	3643 bp
RefSeq ORF:	2409 bp
Locus ID:	5786
UniProt ID:	P18433
Cytogenetics:	20p13
Domains:	Y_phosphatase, PTPc_motif
Protein Families:	Druggable Genome, Phosphatase, Transmembrane
MW:	90.72 kDa
Gene Summary:	<p>The protein encoded by this gene is a member of the protein tyrosine phosphatase (PTP) family. PTPs are known to be signaling molecules that regulate a variety of cellular processes including cell growth, differentiation, mitotic cycle, and oncogenic transformation. This PTP contains an extracellular domain, a single transmembrane segment and two tandem intracytoplasmic catalytic domains, and thus represents a receptor-type PTP. This PTP has been shown to dephosphorylate and activate Src family tyrosine kinases, and is implicated in the regulation of integrin signaling, cell adhesion and proliferation. Three alternatively spliced variants of this gene, which encode two distinct isoforms, have been reported. [provided by RefSeq, Jul 2008]</p>

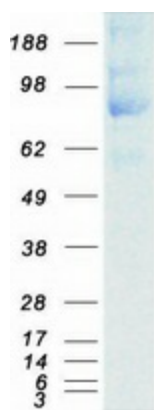
Product images:



Circular map for RC222592



Western blot validation of overexpression lysate (Cat# [LY401026]) using anti-DDK antibody (Cat# [TA50011-100]). Left: Cell lysates from untransfected HEK293T cells; Right: Cell lysates from HEK293T cells transfected with RC222592 using transfection reagent MegaTran 2.0 (Cat# [TT210002]).



Coomassie blue staining of purified PTPRA protein (Cat# [TP322592]). The protein was produced from HEK293T cells transfected with PTPRA cDNA clone (Cat# RC222592) using MegaTran 2.0 (Cat# [TT210002]).