

Product datasheet for RC222587

CDC42 binding protein kinase alpha (CDC42BPA) (NM_014826) Human Tagged ORF Clone

Product data:

Product Type:	Expression Plasmids
Product Name:	CDC42 binding protein kinase alpha (CDC42BPA) (NM_014826) Human Tagged ORF Clone
Tag:	Myc-DDK
Symbol:	CDC42 binding protein kinase alpha
Synonyms:	MRCK; MRCKA; PK428
Mammalian Cell Selection:	Neomycin
Vector:	pCMV6-Entry (PS100001)
E. coli Selection:	Kanamycin (25 ug/mL)
ORF Nucleotide Sequence:	>RC222587 representing NM_014826 Red=Cloning site Blue=ORF Green=Tags(s)

TTTTGTAATACGACTCACTATAGGGCGGCCGGAATTCGTCGACTGGATCCGGTACCGAGGAGATCTGCC
GCC**CGATCGCC**

ATGTCTGGAGAAGTGCCTTTGAGGCAGTTGGAGCAGTTTATTTTGGACGGGCCCGCTCAGACCAATGGGC
AGTGCTTCAGTGTGGAGACGTTACTGGATATACTCATCTGCCTTTATGATGAATGCAATAATTCTCCATT
GAGAAGAGAGAAGAACATTCTCGAATACCTAGAATGGGCTAAACCATTTACTTCTAAAGTAAACAAATG
CGATTACATAGAGAAGACTTTGAAATATTAAGGTGATTGGTCGAGGAGCTTTTGGGGAGGTTGCTGTAG
TAAACTAAAAATGCAGATAAAGTGTTGCCATGAAAAATTTGAATAAATGGGAAATGCTGAAAAGAGC
TGAGACAGCATGTTTTCGTGAAGAAAGGATGTATTAGTGAATGGAGACAATAAATGGATTACAACCTTG
CACTATGCTTTCCAGGATGACAATAACTTATACCTGGTTATGGATTATTATGTTGGTGGGGATTTGCTTA
CTCTACTCAGCAAATTTGAAGATAGATTGCCTGAAGATATGGCTAGATTTTACTTGGCTGAGATGGTGAT
AGCAATTGACTCAGTTCATCAGCTACATTATGTACACAGAGACATTAACCTGACAATACTGATGGAT
ATGAATGGACATATTCGGTTAGCAGATTTTGGTCTTGTCTGAAGCTGATGGAAGATGGAACGGTTCAGT
CCTCAGTGGCTGTAGGAACCTCAGATTATCTCTCCTGAAATCCTTCAAGCCATGGAAGATGAAAAAGG
GAGATATGGACCTGAATGTGACTGGTGGTCTTTGGGGTCTGTATGTATGAAATGCTTTACGGAGAAACA
CCATTTTATGCAGAATCGCTGGTGGAGACATACGAAAAATCATGAACCACAAAGAGAGGTTTCAGTTTC
CAGCCCAAGTGAAGTGTGTCTGAAAAATGCTAAGGATCTTATTGAAAGGCTCATTGTAGCAGAGAACA
TCGACTTGGTCAAATGGAATAGAAAGACTTTAAGAAACACCCATTTTTCAGTGGAAATTGATTGGGATAAT
ATTCGGAAGTGTGAAGCACCTTATATCCAGAAGTTAGTAGCCCAACAGATACATCGAATTTTGTGTAG
ATGATGATTGTTAAAAAATTCTGAAACGATGCCCCACCAACACATACTGCATTTTCTGGCCACCATCT
GCCATTTGTTGGTTTTACATATACTAGTAGCTGTACTTTCTGATCGGAGCTGTTTAAAGAGTTACGGCT
GGTCCACCTCACTGGATCTTGATGTTAATGTTTCAGAGGACTCTAGACAACAACCTAGCAACTGAAGCTT
ATGAAAGAAGAATTAAGCGCCTTGACAAAGAAAACTTGAACCTCAGTAGAAAACCTCAAGAGTCAACACA
GACTGTCCAAGCTCTGCAGTATTCAACTGTTGATGGTCCACTAACAGCAAGCAAAGATTTAGAAAATAAA



[View online »](#)

AACTTAAAAGAAGAAATTGAAAACTAAGAAAACAAGTAAACAGAAATCAAGTCATTTGGAACAGCAACTTG
AAGAAGCTAATGCTGTGAGGCAAGAAGTATGATGCTTTTAGACAAATCAAGGCTTATGAAAAACAAAT
CAAAACGTTACAACAAGAAAGAGAAGATCTAAATAGGAACTAGTCCAGGCTAGTGAGCGATTAAAAAC
CAATCCAAAGAGCTGAAAGAGCCACACTGTGAGAGGAACTGGCCATGCAGGAATTCATGGAGATCAATG
AGCGGCTAACAGAATTGCACACCCAAAAACAGAACTTGTCTGCCATGTCCGAGATAAGGAAAGAAGAGGT
GGACCTGGTGATGCAAAAAGTTGAAAGCTTAAAGCAAGAACTGCCGAGAACAGAAAGAGCCAAAAAGAG
CTGGAAGTTCATACAGAAGCTCTAGCTGTGAAGCATCTAAAGACAGGAAGCTACGTGAACAGAGTGAGC
ACTATTCTAAGCAACTGGAAAAATGAATTGGAGGGACTGAAGCAAAAACAAATTAGTTACTACCAGGAGT
ATGCAGCATAGAACATCAGCAAGAGATAACCAAATAAAGACTGATTTGAAAAAGAAAAGTATCTTTTAT
GAAGAAGAATTATCTAAAAGAGAAGGAATACATGCAAAATGAAATAAAAAATCTTAAGAAAGAACTGCATG
ATTCAGAAGGTCAGCAACTTGTCTCAACAAAGAAATTATGATTTTAAAAGACAAATTGGAAAAACCCAG
AAGAGAAAGTCAAAGTGAAGGGGAGGAATTTGAAAGTGAGTTCAAACAACAATATGAACGAGAAAAAGTG
TTGTTAACTGAAGAAAAATAAAGCTGACGAGTGAAGTGAAGTGAAGTGAAGTGAAGTGAAGTGAAGTGAAG
GTATACACAACCAGCAGTTAGAAGAAGAGGTTAAAGATCTAGCAGACAAGAAAGAATCAGTTGCACATTG
GGAAGCCCAAATCACAGAAATAATTCAGTGGGTCAGCGATGAAAAGGATGCACGAGGGTATCTTCAGGCC
TTAGCTTCTAAAATGACTGAAGAATTGGAGGCATTAAGAAATCCAGCTTGGGTACACGAGCAACAGATA
TGCCCTGGAAAAATGCGTCGTTTTGCGAACTGGATATGTGAGCTAGACTGGAGTTGCAGTCGGCTCTGGA
TGCAGAAATAAGAGCCAAACAGGCCATCCAAGAAGAGTTGAATAAAGTAAAGCATCTAATATCATAACA
GAATGTAAACTAAAAGATTAGAGAAGAAGAACTTGGAACTACTCTCAGAAATCGAACAGCTGATAAAGG
ACACTGAAGAGCTTAGATCTGAAAAGGGTATAGAGCACCAGACTCACAGCATTCTTTCTTGGCATTCTTT
GAATACGCCTACCGATGCTCTGGATCAATTTGAACTGATCCCGTTGAGAACACATATGTATGGAACCCG
AGCGTCAAGTTTACATCCAGTCACGGTCCACATCTCCTCCACATCTAGTGAAGCTGAGCCAGTTAAGA
CTGTAGACTCCACTCCACTTTTCACTTCCACACCAACCTTAAGGAAAAAGGATGTCTGGTTCAACTGG
CTTTCCACCTAAGCGCAAGACTCACAGTTTTTTGTAATAATCTTTTACTACTCTACCAAGTGTCCATCAG
TGTACCTCCTTGATGGTGGGTTTAAAGACAGGGCTGTTTCATGTGAAGTGTGTGGATTCTCATGCCATA
TAACTTGTGTAACAAAGCTCCAACCCTTGTCCAGTTCCTCCTGAACAGACAAAAGGTCCTGGGTAT
AGATCCTCAGAAAGGAATAGGAACAGCATATGAAGGTCATGTGAGGATTCCTAAGCCAGCTGGAGTGAAG
AAAGGGTGGCAGAGAGCACTGGCTATAGTGTGTGACTTCAAACCTTTCTGTACGATATTGCTGAAGGAA
AAGCATCTCAGCCAGTGTGTCATTAGTCAAGTATTGACATGAGGGATGAAGAATTTTCTGTGAGTTC
AGTCTTGGCTTCTGATGTTATCCATGCAAGTCGGAAGATATACCCTGTATTTAGGGTACAGCTTCC
CAGCTCTCAGCATCTAATAACAAATGTTCAATCCTGATGTAGCAGACACTGAGAATGAGAAGAATAAGT
GGGTGGGAGTGTGAGTGAATTGCACAAGATTTGAAAGAAAAACAAATTCAGAGACCGCTCAGTCTATGT
TCCCAAAGAGGCTTATGACAGCACTCTACCCCTCATTAAAAACAACCCAGGCAGCCGAATCATAGATCAT
GAAAGAATTGCTTTGGGAAACGAAGAAGGGTATTTGTTGTACATGTACCAAAGATGAAATTTATAGAG
TTGGTGACAATAAGAAGATTCATCAGATTGAAGTCAATCCAAATGATCAGCTTGTGTGATCTCAGG
ACGAAATCGTCATGTACGACTTTTTCTATGTGAGCATTGGATGGGCGAGAGACCGATTTTTACAAGCTG
TCAGAAACTAAAGGGTGTCAAACRTAACTTCTGGAAAGGTGCGCCATGGAGCTCTCACATGCCTGTGTG
TGGCTATGAAAAGGCAGGCTCTCTGTTATGAAGTATTTTCAAGCAAGACCCGTACAGAAAAATTTAAGA
AATTCAGTCCCATAAATGTCCAGTGGATGGCAATCTCAGTGAACAACCTCTGTGTGGGATCCAGTCA
GGATTTCTAAGATACCCCTTGAATGGAGAAGGAATCCATACAGTATGCTCCATTCAAATGACCATACAC
TATCATTATTGCACATCAACCAATGGATGCTATCTGCGCAGTTGAGATCTCCAGTAAAGAATATCTGCT
GTGTTTTAACAGCATTGGGATATACACTGACTGCCAGGGCCGAAGATCTAGACAACAGGAATTGATGTGG
CCAGCAATCCTTCTCTTGTGTTTACAATGCACCATATCTCTCGGTGTACAGTAAAAATGCAGTTGATA
TCTTTGATGTGAACTCCATGGAATGGATTGAGTCTTCTCTCAAAAAGGTTGACCCCTTAAACAATGA
AGGATCATTAAATCTTTAGGGTTGGAGACCATTAGATTAATATTTTCAAAAATAAGATGGCAGAAGGG
GACGAACTGGTAGTACCTGAAACATCAGATAATAGTCGGAACAATGGTTAGAAACATTAACAATAAGC
GGCGTTATTCCTCAGAGTCCCAGAAGAGGAAAGGATGCAGCAGAGGAGGAAATGCTACGAGATCCAGA
AATGAGAAATAAATTAATTTCTAATCCAATAATTTAATCACATAGCACACATGGGTCCCTGGAGATGGA
ATACAGATCCTGAAAGATCTGCCATGAACCTCGGCCTCAGGAAAGTCCGACAGTATTCAGTGGCTCAG
TCAGTATTCATCTATACCAAATCCCAGCCCTGAGCCAGGCCGCTCCATGAGTGTAGCAGTGGCTGTGTC
AGCAAGGTCATCCGCACAGAATGGCAGCGCATTAAAGAGGGAAATCTCTGGAGGAAGCTACAGTGCACAG
CGCAGCCATGCCCTCCCCTCAGAGGGCTCTTGTCTCCGGAGGCATGGACCAAGGAAGTATGATGCC

CAGCGAGGGACTTTGACGGAGAGGACTCTGACTCTCCGAGGCATTCCACAGCTTCCAACAGTTCCAACCT
AAGCAGCCCCCAAGCCAGTTTACCCCGAAAAACCAAGAGCCTCTCCCTGGAGAGCACTGACCGCGGG
AGCTGGGACCCG

ACGCGTACGCGGCCGCTCGAGCAGAACTCATCTCAGAAGAGGATCTGGCAGCAATGATATCCTGGATT
ACAAGGATGACGACGATAAGGTTTAA

Protein Sequence:

>RC222587 representing NM_014826
Red=Cloning site Green=Tags(s)

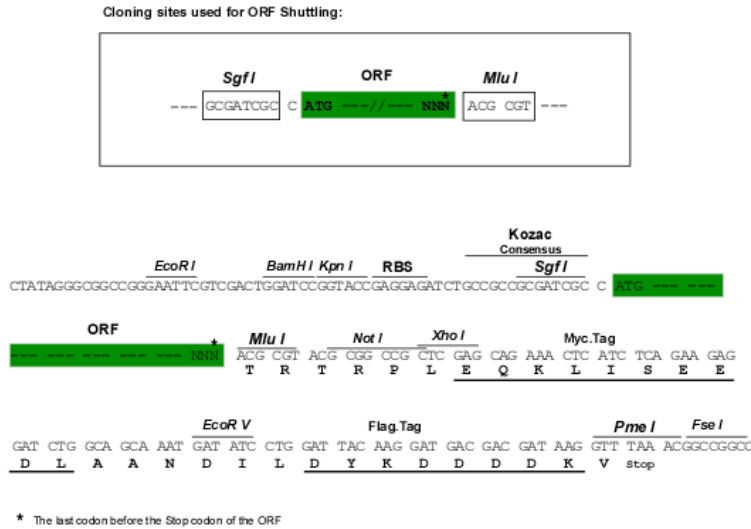
MSGEVRLRQLEQFILDGPAQTNGQCF SVETLLDILICLYDECNNSPLRREKNILEYLEWAKPFTSKVKQM
RLHREDFEILKVI GRGAFGEVAVVVKLNADKVFAMKILNKWEMLKRAETACFREERDVLVNGDNKWITTL
HYAFQDDNNLYL VMDYYVGGDLLTLLSKFEDRLPEDMARFYLAEMVIAIDSVHQLHYVHRDIKPDNIMD
MNGHIRLADFGSCLKMEDGTVQSSVAVGTPDYISPEILQAMEDGKGRYGPECDWWSLGVCMYEMLYGET
PFYAESLVETYGKIMNHKERFQFPAQVTDVSENAKDLIRRLICSRHRLGQNGIEDFKKHFFSGIDWDN
IRNCEAPYIPEVSSPTDTSNFDVDDCLKNSETMPPPTHTAFSGHLPFVGFTYTSSCVLSDRSCLRVTA
GPTSLDLVNVQRTL DNNLATEAYERRIKRLEQEKLERSKLQESTQTVQALQYSTVDGPLTASKDLEIK
NLKEEIEKLRKQVTESSHLEQQLEEANAVRQELDDAFRQIKAYEKQIKTLQQUEREDLNKELVQASERLKN
QSKELKDAHCQRKLAMQEFMEINERL TELHTQKQKLARHVRDKEEEVDL VMQKVESLRQELRTERAKKE
LEVHTEALAAEASKDRKLREQSEHYSKQLENELEGLKQKQISYSPGVCSIEHQEITKTKDLEKKSIFY
EEELSKREGIHANEIKNLKELHDSGQQLALNKEIMILKDKLEKTRRESQSEREFESEFKQQYEREKV
LLTEENKLTSELDKL TTYENLSIHNQQLEEEVKDLADKKEVAHWAEQITEIIQWVSDEKDARGYLQA
LASKMTELEALRNSSLGTRATDMPWKMRRFAKLDMSARLELQSALDAEIRAKQAIQEELNKVKASNIIT
ECKLKDSEKKNLELLSEIEQLIKDTEELRSEKGIHQDSQHSFLAFLNTPDALDQFETDVENTYVWNP
SVKFHIQSRSTSPSTSSEAEPVKTVDSTPLSVHTPTLRKKGCPGSTGFPPKRKTHQFVKSFSTPTKCHQ
CTSLMVG LIRQGCSEVCGFSCHITCVNKAPTTCPVPPEQTKGPLGIDPQKIGTAYEGHVRIPKPAVK
KGWQRALAI VCDFKLFLYDIAEGKASQPSVVISQVIDMRDEEFSVSSVLSASDVIHASRKDIPCFRVTAS
QLSASNKCSILMLADTENEKNKVVGVLSLHKILKKNKFRDRSVYVPKEAYDSTLPLIKTTQAAAIIDH
ERIALGNEEGLFVVHVTKDEIIRVGDNKKIHQIELIPNDQLVAVISGRNRHVRLFPMSALDGRETDFYKL
SETKGCQXTSGKVRHGALTCLCVAMKRQVLCYELFQSKTRHRKFKEIQVPYNVQWMAIFSEQLCVGFQS
GFLRYPLNGEGNPYSMLHSNDHTLSFIAHQPMDAICAVEISSKEYLLCFNSIGIYTDQCGRRSRQQLMW
PANPSSCCYNAPYL SVYSENAVDFDVNSMEWIQTLPLKVRPLNNEGSLNLLGLETIRLIYFNKMAEG
DELVVPETSDNSRKQMVNRINNKRRYSFRVPEEERMQRREMLRDPENRNLISNPTNFNHAHMGPGDG
IQILKDLPMNPRPQESRTVFGSVSIP SITKSRPEPGRSMSASSGLSARSSAQNGSALKREFSGGSYSAK
RQPMPSPSEGLSSGGMDQGS DAPARDFDGEDSDSPRHSTASNSSNLSSPPSPVSPRKTKSLSESTDRG
SWDP

TRTRPLEQKLI SEEDLAANDILDYKDDDDKV

Restriction Sites:

Sgfl-MluI

Cloning Scheme:



- ACCN:** NM_014826
- ORF Size:** 5262 bp
- OTI Disclaimer:** The molecular sequence of this clone aligns with the gene accession number as a point of reference only. However, individual transcript sequences of the same gene can differ through naturally occurring variations (e.g. polymorphisms), each with its own valid existence. This clone is substantially in agreement with the reference, but a complete review of all prevailing variants is recommended prior to use. [More info](#)
- OTI Annotation:** This clone was engineered to express the complete ORF with an expression tag. Expression varies depending on the nature of the gene.
- Components:** The ORF clone is ion-exchange column purified and shipped in a 2D barcoded Matrix tube containing 10ug of transfection-ready, dried plasmid DNA (reconstitute with 100 ul of water).

Reconstitution Method:

1. Centrifuge at 5,000xg for 5min.
2. Carefully open the tube and add 100ul of sterile water to dissolve the DNA.
3. Close the tube and incubate for 10 minutes at room temperature.
4. Briefly vortex the tube and then do a quick spin (less than 5000xg) to concentrate the liquid at the bottom.
5. Store the suspended plasmid at -20°C. The DNA is stable for at least one year from date of shipping when stored at -20°C.

RefSeq Size: 7776 bp

RefSeq ORF: 4917 bp

Locus ID: 8476

UniProt ID: [Q5VT25](#)

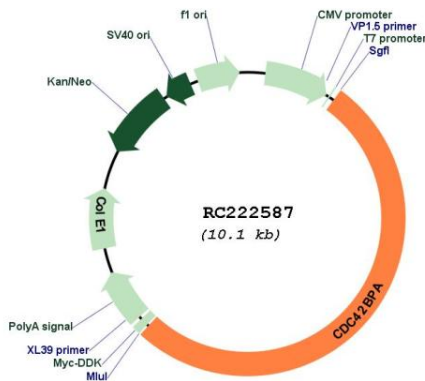
Cytogenetics: 1q42.13

Protein Families: Druggable Genome, Protein Kinase

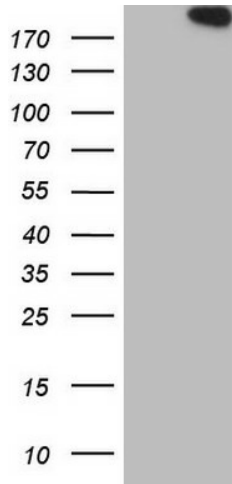
MW: 199.86 kDa

Gene Summary: The protein encoded by this gene is a member of the serine/threonine protein kinase family. This kinase contains multiple functional domains. Its kinase domain is highly similar to that of the myotonic dystrophy protein kinase (DMPK). This kinase also contains a Rac interactive binding (CRIB) domain, and has been shown to bind CDC42. It may function as a CDC42 downstream effector mediating CDC42 induced peripheral actin formation, and promoting cytoskeletal reorganization. Multiple alternatively spliced transcript variants have been described. [provided by RefSeq, Sep 2018]

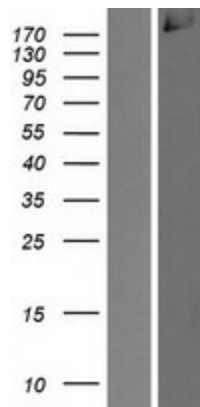
Product images:



Circular map for RC222587



HEK293T cells were transfected with the pCMV6-ENTRY control (Cat# [PS100001], Left lane) or pCMV6-ENTRY CDC42BPA (Cat# RC222587, Right lane) cDNA for 48 hrs and lysed. Equivalent amounts of cell lysates (5 ug per lane) were separated by SDS-PAGE and immunoblotted with anti-CDC42BPA (Cat# [TA808223])(1:2000). Positive lysates [LY415030] (100ug) and [LC415030] (20ug) can be purchased separately from OriGene.



Western blot validation of overexpression lysate (Cat# [LY415030]) using anti-DDK antibody (Cat# [TA50011-100]). Left: Cell lysates from untransfected HEK293T cells; Right: Cell lysates from HEK293T cells transfected with RC222587 using transfection reagent MegaTran 2.0 (Cat# [TT210002]).