

Product datasheet for **RC222580**

MARK4 (NM_031417) Human Tagged ORF Clone

Product data:

Product Type:	Expression Plasmids
Product Name:	MARK4 (NM_031417) Human Tagged ORF Clone
Tag:	Myc-DDK
Symbol:	MARK4
Synonyms:	MARK4L; MARK4S; MARKL1; MARKL1L; PAR-1D
Mammalian Cell Selection:	Neomycin
Vector:	pCMV6-Entry (PS100001)
E. coli Selection:	Kanamycin (25 ug/mL)



[View online »](#)

**ORF Nucleotide
Sequence:**

>RC222580 representing NM_031417
 Red=Cloning site Blue=ORF Green=Tags(s)

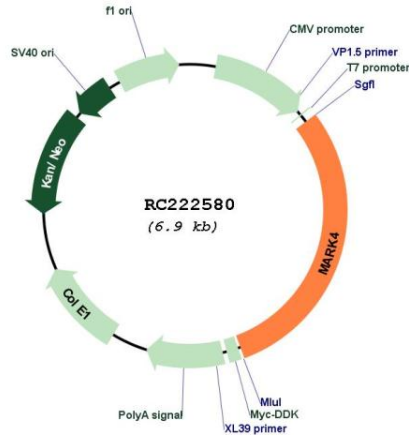
TTTTGTAATACGACTCACTATAGGGCGGCCGGGAATTCGTCGACTGGATCCGGTACCGAGGAGATCTGCC
 GCC**CGGATCGCC**

ATGTCTTCGCGGACGGTCTGGCCCCGGGCAACGATCGGAACTCGGACACGCATGGCACCTTGGGCAGTG
 GCCGCTCCTCGGACAAAGGCCCGTCTGGTCCAGCCGCTCACTGGGTGCCGTTGCCGAACTCCATCGC
 CTCTGTCCCGAGGAGCAGCCCCACGTGGGCAACTACCGCTGCTGAGGACCATTGGGAAGGGCAACTTT
 GCCAAAGTCAAGCTGGCTCGGCACATCCTCACTGGTGGGAGGTTGCCATCAAGATTATCGACAAAACCC
 AGCTGAATCCCAGCAGCCTGCAGAAGCTGTTCCGAGAAGTCCGCATCATGAAGGGCTAAACCACCCCAA
 CATCGTGAAGCTCTTTGAGGTGATTGAGACTGAGAAGACGCTGTACCTGGTGATGGAGTACGCAAGTGCT
 GGAGAAGTGTGACTACCTCGTGCATGGCCGCATGAAGGAGAAGGAAGCTCGAGCCAAGTCCGCAC
 AGATTGTTTCGGCTGTGACTATTGTACCAGAAAAATATTGTACACAGGGACCTGAAGGCTGAGAACCT
 CTTGCTGGATGCCGAGGCCAACATCAAGATTGCTGACTTTGGCTTCAGCAACGAGTTCACGCTGGGATCG
 AAGCTGGACACGTTCTGCGGGAGCCCCATATGCCGCCCGGAGCTGTTTCAGGGCAAGAAGTACGACG
 GGCCGGAGGTGGACATCTGGAGCCTGGGAGTCATCCTGTACACCCCTGTCAGCGGCTCCCTGCCCTTCGA
 CGGGCACAACTCAAGGAGCTGCGGGAGCGAGTACTCAGAGGGAAGTACCGGGTCCCTTTTCTACATGTCA
 ACAGACTGTGAGAGCATCCTGCGGAGATTTTTGGTGTGAACCCAGCTAAACGCTGTACTCTCGAGCAAA
 TCATGAAAGACAAATGGATCAACATCGGCTATGAGGGTGAAGGTTGAAGCCATACACAGAGCCCGAGGA
 GGACTTCGGGGACACCAAGAGAATTGAGGTGATGGTGGGTATGGGCTACACACGGGAAGAAATCAAAGAG
 TCCTTGACCAGCCAGAAGTACAACGAAGTGACCGCCACCTACCTCCTGCTGGGCAGGAAGACTGAGGAGG
 GTGGGGACCGGGCGCCCCAGGGCTGGCCCTGGCACGGGTGCGGGCGCCACGACACCAACCGGAAC
 AAGTTCCAGCAAAGGCACCGCCACAGCAAAGGGCAGCGGAGTTCTCTTCCACCTACCACCGCCAGCGC
 AGGCATAGCGATTTCTGTGGCCATCCCTGCACCCCTGCACCCCAAACGACGCCGACGAGCACGGGGG
 AGGCGGAGCTGAAGGAGGAGCGGCTGCCAGGCCGGAAGGCGAGCTGCAGCACCGCGGGGAGTGGGAGTCG
 AGGGCTGCCCCCTCCAGCCCCATGGTCAGCAGCGCCACAACCCCAACAAGGCAGAGATCCCAGAGCGG
 CGGAAGGACAGCAGCAGCACCCCAACAACCTCCCTCCTAGCATGATGACCCGAGAAACACCTACGTTT
 GCACAGAACGCCCGGGGCTGAGCGCCCGTCACTGTTGCCAAATGGGAAAGAAAACAGCTCAGGCACCCC
 ACGGGTGCCCCCTGCCTCCCCCTCCAGTACAGCCTGGCACCCCATCAGGGGAGCGGAGCCGCCTGGCA
 CGCGGTTCCACCATCCGACGACCTTCCATGGTGGCCAGGTCCGGGACCGCGGGCAGGGGTGGGGGTG
 GTGGGGTGTGCAGAATGGGCCCTGCCTCTCCACACTGGCCCATGAGGCTGCACCCCTGCCCGCCGG
 GCGGCCCGCCCCACCACCAACCTTTCACCAAGCTGACCTCAAACCTGACCCGAAGGGTTACCTCGAT
 CCCTCTAAACGGCAGAACTCTAACCGCTGTGTTTCGGGCGCTCTCTGCCCCAGGGATCCAAGATCAGGT
 CGCAGACGAACCTGAGAGAATCGGGGACCTGAGGTCACAAGTTGCCATCTACCTGGGATCAAACGGAA
 ACCGCCCCCGGCTGCTCCGATTCCTGGAGTG

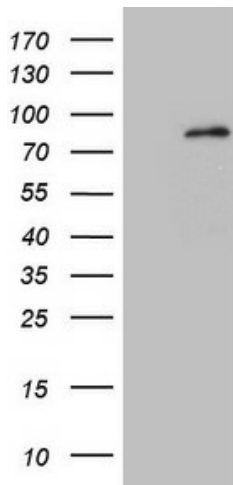
ACGCGTACGCGGGCGCTCGAGCAGAACTCATCTCAGAAGAGGATCTGGCAGCAAATGATATCCTGGATT
 ACAAGGATGACGACGATAAGGTTTAA

Components:	The ORF clone is ion-exchange column purified and shipped in a 2D barcoded Matrix tube containing 10ug of transfection-ready, dried plasmid DNA (reconstitute with 100 ul of water).
Reconstitution Method:	<ol style="list-style-type: none">1. Centrifuge at 5,000xg for 5min.2. Carefully open the tube and add 100ul of sterile water to dissolve the DNA.3. Close the tube and incubate for 10 minutes at room temperature.4. Briefly vortex the tube and then do a quick spin (less than 5000xg) to concentrate the liquid at the bottom.5. Store the suspended plasmid at -20°C. The DNA is stable for at least one year from date of shipping when stored at -20°C.
RefSeq:	NM_031417.3
RefSeq Size:	4917 bp
RefSeq ORF:	2067 bp
Locus ID:	57787
UniProt ID:	Q96L34
Cytogenetics:	19q13.32
Protein Families:	Druggable Genome, Protein Kinase
MW:	75.1 kDa
Gene Summary:	This gene encodes a member of the microtubule affinity-regulating kinase family. These protein kinases phosphorylate microtubule-associated proteins and regulate the transition between stable and dynamic microtubules. The encoded protein is associated with the centrosome throughout mitosis and may be involved in cell cycle control. Expression of this gene is a potential marker for cancer, and the encoded protein may also play a role in Alzheimer's disease. Pseudogenes of this gene are located on both the short and long arm of chromosome 3. Alternatively spliced transcript variants encoding multiple isoforms have been observed for this gene. [provided by RefSeq, Dec 2010]

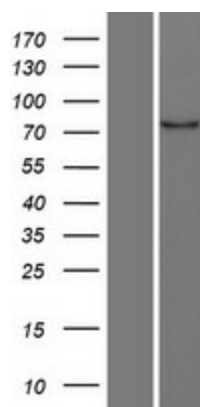
Product images:



Circular map for RC222580



HEK293T cells were transfected with the pCMV6-ENTRY control (Cat# [PS100001], Left lane) or pCMV6-ENTRY MARK4 (Cat# RC222580, Right lane) cDNA for 48 hrs and lysed. Equivalent amounts of cell lysates (5 ug per lane) were separated by SDS-PAGE and immunoblotted with anti-MARK4(Cat# [TA808507]). Positive lysates [LY403112] (100ug) and [LC403112] (20ug) can be purchased separately from OriGene.



Western blot validation of overexpression lysate (Cat# [LY403112]) using anti-DDK antibody (Cat# [TA50011-100]). Left: Cell lysates from untransfected HEK293T cells; Right: Cell lysates from HEK293T cells transfected with RC222580 using transfection reagent MegaTran 2.0 (Cat# [TT210002]).