

Product datasheet for RC222572

ANKS1B (NM_020140) Human Tagged ORF Clone

Product data:

Product Type:	Expression Plasmids
Product Name:	ANKS1B (NM_020140) Human Tagged ORF Clone
Tag:	Myc-DDK
Symbol:	ANKS1B
Synonyms:	AIDA; AIDA-1; ANKS2; cajalin-2; EB-1; EB1
Mammalian Cell Selection:	Neomycin
Vector:	pCMV6-Entry (PS100001)
E. coli Selection:	Kanamycin (25 ug/mL)
ORF Nucleotide Sequence:	>RC222572 representing NM_020140 Red=Cloning site Blue=ORF Green=Tags(s)

TTTTGTAATACGACTCACTATAGGGCGGCCGGAATTCGTCGACTGGATCCGGTACCGAGGAGATCTGCC
GCC**CGATCGCC**

ATGATGTGGCAATGCCACCTCTCAGCCCAGGACTACCGCTATTACCCCGTGGACGGCTACTCCCTGCTTA
AACGCTTCCCTTTCATCCTCTTACAGGACCCAGATGCCCTGTCCAAACAGTGGGACAATGGTTGGAAAG
CATTGGGCTACCTCAGTACGAGAACCACCTGATGGCTAATGGATTTGACAATGTGCAGTTTATGGGAAGC
AATGTTATGGAAGATCAGGATTTGTTGAAATTGGAATCCTTAATTCTGGGCACAGACAAAGAATTCTAC
AGGCAATCCAGCTCCTTCCAAAGATGAGACCCATTGGGCATGATGGCTACCATCCACCTCTGTAGCTGA
GTGGCTGGATTCCATTGAACTGGGCGACTACACCAAAGCCTTTCTAATTAATGGCTACACTTCGATGGAC
CTGTTGAAAAAATCTGGGAGGTTGAACTTATTAATGTTTTAAAAATCAATTTGATTGGCCACAGGAAAC
GTATTTTGGCATCTCTGGGAGACAGGCTGCACGACGATCCCCACAGAAGCCCCCTCGGTCCATCACCCCT
CAGGACAGGAGACTGGGAGAACCTTCCATTACCTTGGCAGCTCCGAATGAAGCCACAGCCTCTACCCCG
GTACAGTACTGGCAGCATCACCCAGAAAAGCTTATCTTCCAGTCGTGTGATTACAAAGCTTTTTATTTAG
GTTCTATGCTGATAAAAGAGCTTAGGGGACAGAATCAACCAAGATGCTTGTGCAAAAATGCGGGCTAA
CTGTGAGAAGTCTACAGAGCAAATGAAGAAGTCCCTACTATTATTCTTCTGTCTCATATAAAGGATC
AAATTTATTGATGCAACAAATAAGAACAATAATTGCTGAGCATGAAATTCGTAATATCTCCTGTGCTGCC
AGGACCCAGAAGACCTCTCAACATTTGCCTATATCACAAAAGATTTGAAGTCTAATCACCCTACTGTCA
TGTGTTTACTGCCTTTGATGTGAATTTAGCCTATGAAATCATCCTAACCTGGGACAGGCATTCCAAGTC
GCTTACCAGCTAGCACTACAAGCAAGAAAAGGGGACACTCCTCCACACTCCAGAAAAGCTTTGAAAACA
AACCTCCAAACCCATCCCCAAGCCCCGCTTAGCATTGCAAGTCCGTGGATCTTCTCATGCCAGCCA
TACCGGCAGGAACCATCAGAGAGACACTGAGGAGGCACTCAGAAAATTT

ACGCGTACGCGGCCGCTCGAGCAGAAACTCATCTCAGAAGAGGATCTGGCAGCAAATGATATCCTGGATT
ACAAGGATGACGACGATAAGGTTTAA



[View online »](#)

Protein Sequence: >RC222572 representing NM_020140
Red=Cloning site Green=Tags(s)

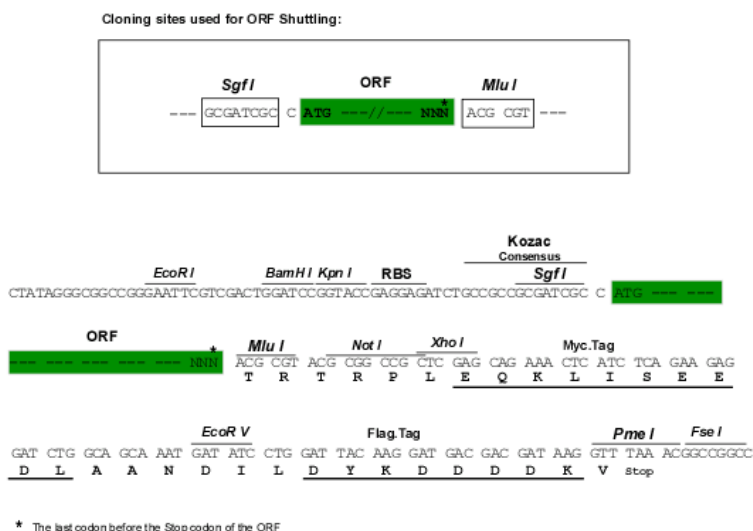
```
MMWQCHLSAQDYRYYPVDGYSLLKRFPLHPLTGPRCPVQTVGQWLESIGLPQYENHLMANGFDNVQFMGS
NVMEDQDLEIGILNSGHRQRILQAIQLLPKMRPIGHDGYHPTSVAEWLDSIELGDYTKAFLINGYTSMD
LLKKIWEVELINVLKINLIGHKRILASLGDR LHDDPPQKPPRSITLRTGDWGEPSITLRPPNEASTP
VQYWQHHPKELIFQSCDYKAFYLGSMLIKELRGTESTQDACAKMRANCQKSTEQMKKVPTIILSVSYKGV
KFIDATNKNIIAEHEIRNISCAAQDPEDLSTFAYITKDLKSNHHYCHVFTAFDVNLAYEIIITLQGA FEV
AYQLALQARKGGHSSTLPESFENKPSKPIPKPRVSIRKSVDLLHASHTGQEPSERHTEELRKF
```

TRTRPLEQKLISEEDLAANDILDYKDDDDKV

Chromatograms: https://cdn.origene.com/chromatograms/ja1304_d09.zip

Restriction Sites: SgfI-MluI

Cloning Scheme:



ACCN: NM_020140

ORF Size: 1242 bp

OTI Disclaimer: The molecular sequence of this clone aligns with the gene accession number as a point of reference only. However, individual transcript sequences of the same gene can differ through naturally occurring variations (e.g. polymorphisms), each with its own valid existence. This clone is substantially in agreement with the reference, but a complete review of all prevailing variants is recommended prior to use. [More info](#)

OTI Annotation: This clone was engineered to express the complete ORF with an expression tag. Expression varies depending on the nature of the gene.

Components: The ORF clone is ion-exchange column purified and shipped in a 2D barcoded Matrix tube containing 10ug of transfection-ready, dried plasmid DNA (reconstitute with 100 ul of water).

Reconstitution Method:

1. Centrifuge at 5,000xg for 5min.
2. Carefully open the tube and add 100ul of sterile water to dissolve the DNA.
3. Close the tube and incubate for 10 minutes at room temperature.
4. Briefly vortex the tube and then do a quick spin (less than 5000xg) to concentrate the liquid at the bottom.
5. Store the suspended plasmid at -20°C. The DNA is stable for at least one year from date of shipping when stored at -20°C.

RefSeq: [NM_020140.3](#), [NP_064525.1](#)

RefSeq Size: 1714 bp

RefSeq ORF: 1245 bp

Locus ID: 56899

UniProt ID: [Q7Z6G8](#)

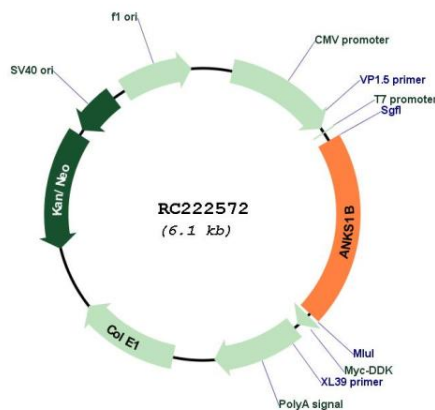
Cytogenetics: 12q23.1

Domains: SAM, PID

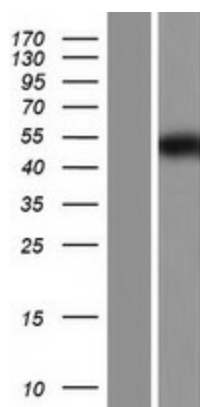
MW: 46.9 kDa

Gene Summary: This gene encodes a multi-domain protein that is predominantly expressed in brain and testis. This protein interacts with amyloid beta protein precursor (AbetaPP) and may have a role in normal brain development, and in the pathogenesis of Alzheimer's disease. Expression of this gene has been shown to be elevated in patients with pre-B cell acute lymphocytic leukemia associated with t(1;19) translocation. Alternatively spliced transcript variants encoding different isoforms (some with different subcellular localization, PMID:15004329) have been described for this gene. [provided by RefSeq, Aug 2011]

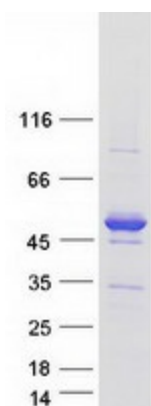
Product images:



Circular map for RC222572



Western blot validation of overexpression lysate (Cat# [LY412629]) using anti-DDK antibody (Cat# [TA50011-100]). Left: Cell lysates from untransfected HEK293T cells; Right: Cell lysates from HEK293T cells transfected with RC222572 using transfection reagent MegaTran 2.0 (Cat# [TT210002]).



Coomassie blue staining of purified ANKS1B protein (Cat# [TP322572]). The protein was produced from HEK293T cells transfected with ANKS1B cDNA clone (Cat# RC222572) using MegaTran 2.0 (Cat# [TT210002]).