

Product datasheet for **RC222571**

ZNF12 (NM_006956) Human Tagged ORF Clone

Product data:

Product Type:	Expression Plasmids
Product Name:	ZNF12 (NM_006956) Human Tagged ORF Clone
Tag:	Myc-DDK
Symbol:	ZNF12
Synonyms:	GIOT-3; HZF11; KOX3; ZNF325
Mammalian Cell Selection:	Neomycin
Vector:	pCMV6-Entry (PS100001)
E. coli Selection:	Kanamycin (25 ug/mL)



[View online »](#)

ORF Nucleotide
Sequence:

>RC222571 representing NM_006956
Red=Cloning site Blue=ORF Green=Tags(s)

TTTTGTAATACGACTCACTATAGGGCGGCCGGAATTCGTCGACTGGATCCGGTACCGAGGAGATCTGCC
GCCCGCATCGCC

ATGAATAAATCCCTGGGCCAGTGTCTTCAAGGACGTGGCTGTGGACTTCACCCAGGAGGAATGGCAGC
AGCTGGATCCTGAGCAGAAGATAACTTACAGGGATGTGATGCTGGAGAACTACAGCAATCTAGTTTCTGT
GGGGTATCACATTATCAAACCGGATGTTATCAGCAAGTTGGAGCAAGGAGAAGAGCCATGGATAGTAGAA
GGAGAATTCCTACTTCAGAGCTATCCAGATGAAGTCTGGCAAACCTGATGACCTAATAGAGAGAATCCAGG
AAGAGGAAAAAATAACCTTCAAGGCAAACCTGTGTTTATTGAGACCTGATTGAAGAGAGAGAATATATTAG
TAGTGATGGAAGCTATGCAAGAATGAAAGCTGATGAATGTAGTGGATGTGGGAAATCACTCCTCCATATT
AAGCTTGAGAAAACCTATCCAGGAGATCAAGCTTATGAATTTAATCAAAATGGGGAACCTTATACTCTAA
ATGAAGAAAGTCTTTATCAGAAAATTCGATTTTGGGAAAACCTTTTGAATATATTGAATGCCAGAAAGC
CTTCCAAAAGGACACTGTTTTTGTAAATCACATGGAAGAAAAGCCCTATAAGTGGATGGATCTGAATA
GCCTTTCTCCAGATGTCCGACCTCACTGTACATCAGACATCTCATATGGAATGAAGCCCTATGAATGCA
GTGAATGTGGGAAATCCTTCTGTAAAAAGTCAAAATTTATTATACATCAGAGGACTCACACAGGAGAGAA
ACCTTACGAATGTAATCAGTGTGGGAAATCCTTCTGCCAGAAGGGAACCTTACTGTGCATCAGAGAACA
CACACAGGGGAGAAGCCCTATGAATGTAATGAATGTGGGAAGAACCTTTACCAGAAGTTACACCTCATTC
AGCATCAGAGAACTCACTCAGGAGAGAAGCCCTATGAATGTAGTATTGTGGAAAATCCTTTTGGCAGAA
GACACACCTCACACAACATCAGAGAACACATTCAGGAGAGAGACCTTATGTTTGCATGACTGTGGGAAA
ACCTTCTCGCAGAAGTCAAGCACTTAATGACCATCAGAAAATTCACACAGGTGTGAAACTTACAAGTGTA
GTGAATGTGGGAAATGCTTCTGCCGCAAGTCTACTCTCACGACCCACCTGAGGACCCACACAGGAGAGAA
ACCGTATGAATGTAATGAGTGTGGAAAATTCCTTCTCGGTTGTCATATCTCACTGTACATTATAGAACT
CATTCAGGAGAGAAAACCTATGAATGTAATGAATGTGGAAAACCTTCTACCTGAATTCAGCCCTCATGA
GACATCAGAGAGTGCACACAGGAGAGAAAACCTTACGAATGTAATGAATGTGGAAAAGTTATTCTCCAGTT
GTCATACCTCACTATCCATCATAGAACTCATTAGGAGTAAAACCTATGAATGTAGTGAATGTGGGAAA
ACCTTCTACCAGAACTCAGCCCTTGTAGACATCGGAGAATACACAAAGGAGAGAAGCCCTATGAATGCT
ATATATGTGGAAAATTCCTTCTCAGATGTCATACCTCACTATACATCATAGAATTCATTAGGAGAGAA
GCCCTATGAATGTAGTGAATGTGGGAAAACCTTCTGCCAGAATTCAGCCCTTAAATCGACATCAGAGAACA
CACACAGGAGAGAAAAGCCCTACGAATGTTATGAATGTGGGAAGTGTCTTCTCAGATGTCCTATCTACTA
TACATCATCGAATTCATTAGGAGAGAAAACCTTGAATGTAATGAGTGTGGAAAAGCCTTCTCTCGGAT
GTCATACCTCACTGTACATTATAGAACTCATTAGGAGAGAAAACCTATGAGTGTACTGAATGTGGAAAA
AAATTCTACCACAAATCAGCATTCAACAGCCATCAGAGAATTCATAGGAGAGGCAATATGAATGTAATAG
ATGTGGGAAGGCTTCTC

ACGCGTACGCGGCCGCTCGAGCAGAAAACCTCATCTCAGAAGAGGATCTGGCAGCAATGATATCCTGGATT
ACAAGGATGACGACGATAAGGTTTAA

Reconstitution Method:

1. Centrifuge at 5,000xg for 5min.
2. Carefully open the tube and add 100ul of sterile water to dissolve the DNA.
3. Close the tube and incubate for 10 minutes at room temperature.
4. Briefly vortex the tube and then do a quick spin (less than 5000xg) to concentrate the liquid at the bottom.
5. Store the suspended plasmid at -20°C. The DNA is stable for at least one year from date of shipping when stored at -20°C.

RefSeq: [NM_006956.3](#)

RefSeq Size: 4960 bp

RefSeq ORF: 1980 bp

Locus ID: 7559

UniProt ID: [P17014](#)

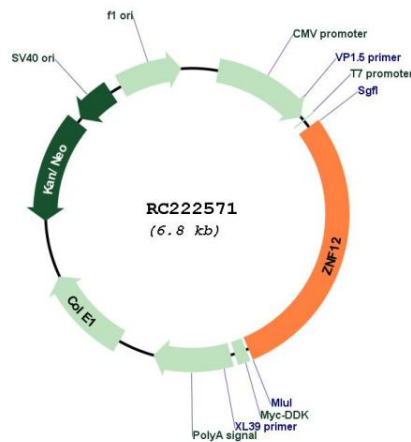
Cytogenetics: 7p22.1

Protein Families: Transcription Factors

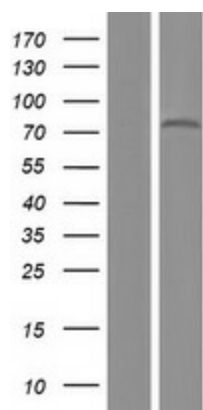
MW: 77 kDa

Gene Summary: This gene is a member of the krueppel C2H2-type zinc-finger protein family and encodes a protein with eight C2H2-type zinc fingers and a KRAB domain. This nuclear protein is involved in developmental control of gene expression. Alternate transcriptional splice variants, encoding different isoforms, have been characterized. [provided by RefSeq, Jul 2008]

Product images:



Circular map for RC222571



Western blot validation of overexpression lysate (Cat# [LY416304]) using anti-DDK antibody (Cat# [TA50011-100]). Left: Cell lysates from untransfected HEK293T cells; Right: Cell lysates from HEK293T cells transfected with RC222571 using transfection reagent MegaTran 2.0 (Cat# [TT210002]).