

Product datasheet for **RC222570**

NRIP (DCAF6) (NM_018442) Human Tagged ORF Clone

Product data:

Product Type:	Expression Plasmids
Product Name:	NRIP (DCAF6) (NM_018442) Human Tagged ORF Clone
Tag:	Myc-DDK
Symbol:	NRIP
Synonyms:	1200006M05Rik; ARCAP; IQWD1; MSTP055; NRIP; PC326
Mammalian Cell Selection:	Neomycin
Vector:	pCMV6-Entry (PS100001)
E. coli Selection:	Kanamycin (25 ug/mL)



[View online »](#)

ORF Nucleotide Sequence:

>RC222570 representing NM_018442
 Red=Cloning site Blue=ORF Green=Tags(s)

TTTTGTAATACGACTCACTATAGGGCGGCCGGAATTCGTCGACTGGATCCGGTACCGAGGAGATCTGCC
 GCC**CGGATCGCC**

ATGTCTCGGGGTGGCTCCTACCCACACCTGTTGTGGGACGTGAGGAAAAGTCCCTCGGGCTGGAGGACC
 CGTCCCGCTGCGGAGTCGCTACCTGGGAAGAAGAGAATTTATCCAAAGATTAAGCAACCCCT
 TAATGTGCATGATGGTTGTGTTAATAACAATCTGTTGGAATGACACTGGAGAATATATTTTATCTGGCTCA
 GATGACACCAAATTAGTAATTAGTAATCCTTACAGCAGAAAGGTTTTGACAACAATTCGTTCAAGGCACC
 GAGCAAACATATTTAGTGCAAAGTCTTACCTGTACAAATGATAAACAGATTGTATCCTGCTCTGGAGA
 TGGAGTAATATTTTATACCAACGTTGAGCAAGATGCAGAAACCAACAGACAATGCCAATTTACGTGCAT
 TATGGAACACTTATGAGATTATGACTGTACCAATGACCCTTACTTTTTCTCTCTGTGGTGAAGATG
 GAACTGTTAGGTGGTTTGATACACGCATCAAACTAGCTGCACAAAAGAAGATTGTAAGATGATATTTT
 AATTAAGTGTGACGTGCTGCCAGTCTGTTGCTATTTGCCACCAATACCATATTACCTTGTCTGTTGGT
 TGTCTGACAGCTCAGTACGAATATATGATCGGCGAATGCTGGGCACAAGAGCTACAGGGAATTATCGAG
 GTCGAGGGACTACTGGAATGGTTGCCCGTTTTATTCTTCCCCTTAATAATAAGTCTGCAGAGTGAC
 ATCTCTGTGTACAGTGAAGATGGTCAAGAGATTCTCGTTAGTACTCTTCTCAGATTACATATATCTTTTT
 GACCCGAAAGATGATACAGCAGGAGAACTTAAACTCCTTCTGCGGAAGAGAGAAGAGAGATTGCGAC
 AACCACCAGTTAAGCGTTTGAGACTTCGTGGTGATTGGTCAGATACTGGACCCAGAGCAAGGCCGGAGAG
 TGAACGAGAACGAGATGGAGAGCAGAGTCCCAATGTGTCATTGATGCAGAGAATGTCTGATATGTTATCA
 AGATGGTTTGAAGAAGCAAGTGAAGTTGCACAAAGCAATAGAGGACGAGGAAGATCTCGACCCAGAGGTG
 GAACAAGTCAATCAGATATTTCAACTCTCTACGGTCCCCTCAAGTCTGATTTGGAAGTGAAGTGAAC
 TGCAATGGAAGTAGATACTCCAGCTGAACAATTTCTTACGCTTCTACATCCTCTACAATGTCAGCTCAG
 GCTCATTGACATCATCTCCACAGAAAGCCCTCATTCTACTCCTTTGCTATCTTCTCCAGACAGTGAAC
 AAAGGCAGTCTGTTGAGGCATCTGGACACCACACATCATCAGTCTGATTCTCCTTCTTCTGTGGTTAA
 CAAACAGCTCGGATCCATGTCACCTTGACGAGCAACAGGATAACAATAATGAAAAGCTGAGCCCCAAACCA
 GGGACAGGTGAACCAGTTTTAAGTTTGCCTACAGCAGAAAGGAACAATAACAAGCACAATAAACTGA
 ACTTTACAGATGAATGGAGCAGTATAGCATCAAGTTCTAGAGGAATTTGGAGCCATTGCAAACTGAGGG
 TCAGGAGGAATCTTTCGTCACAGAGCTCAGTCAACCACCAGAGGAGACAGTGAACAAAAGCTCCT
 GAAGAATCATCAGAGGATGTGACAAAATATCAGGAAGGAGTATCTGCAGAAAACCAGTTGAGAACCATA
 TCAATATAACACAATCAGATAAGTTACAGCCAAGCCATTGGATTCCAACCTCAGGAGAAAGAAATGACCT
 CAATCTTGATCGCTCTTGTGGGTTCCAGAAGAATCTGCTTCATCTGAAAAGCCAAAGGAACCAGAACT
 TCAGATCAGACTAGCACTGAGAGTGCTACCAATGAAAATAACACCAATCCTGAGCCTCAGTTCCAACAG
 AAGCCACTGGGCCTTCAGCTCATGAAGAAACATCCACCAGGACTCTGCTCTTCAGGACACAGATGACAG
 TGATGATGACCCAGTCTGATCCAGGTGCAAGGTATCGAGCAGGACCTGGTGATAGACGCTCTGCTGTT
 GCCCGTATTCAGGAGTTCTTTCAGACGGAGAAAAGAAAGAAAGAAATGGAAGAATTGGATACTTTGAACA
 TTAGAAGGCCGCTAGTAAAAATGGTTTATAAAGGCCATCGCAACTCCAGGACAATGATAAAAAGAAGCCAA
 TTTCTGGGGTGCTAACTTTGTAATGAGTGGTTCTGACTGTGGCCACATTTTCATCTGGGATCGGCACAT
 GCTGAGCATTTGATGCTTCTGGAAGCTGATAATCATGTGGTAAACTGCCTGCAGCCACATCCGTTTGACC
 CAATTTTAGCCTCATCTGGCATAGATTATGACATAAAGATCTGGTCACCATTAGAAGAGTCAAGGATTTT
 TAACCGAAAACCTGCTGATGAAGTTATAACTCGAAACGAACCTCATGCTGGAAAGAACTAGAAACACCATT
 ACAGTTCCAGCCTCTTTCATGTTGAGGATGTTGGCTTCACTTAATCATATCCGAGCTGACCGGTTGGAGG
 GTGACAGATCAGAAGGCTCTGGTCAAGAGAATGAAAATGAGGATGAGGAA

ACGCGTACGCGGCCGCTCGAGCAGAAACTCATCTCAGAAGAGGATCTGGCAGCAATGATATCTGGATT
 ACAAGGATGACGACGATAAGGTTTAA

Protein Sequence: >RC222570 representing NM_018442
 Red=Cloning site Green=Tags(s)

MSRGGSYPHLLWDVVRKSLGLEDP SRLSRYLGRREFIQRLKLEATLNVHDGCVNTICWNDTGEYILSGS
 DDTKLVISNPYSRKVLTTIRSGHRANIFSAKFLPCTNDKQIVSCSGDGVIFYTNVEQDAETNRQCQFTCH
 YGTTYEIMTVPNDPYTF LSCGEDGTVRWFDTRIKTSCTKEDCKDDILINCRRAATSVAICPPIPYLLAVG
 CSDSSVRIYDRRMLGTRATGN YAGRGTGMVARFIPSHLNNKSCRVTSLCYSEDGQEILVSYSSDYIYLF
 DPKDDTARELKTPSAEERREELRQPPVKRLRLRGDWSDTGPRARPESEERDGEQSPNVSLMQRMSDMLS
 RWFEEASEVAQSNRGRSRPRGGTSQSDISTLPTVPSPDLEVSETAMEVDTPAEQFLQPSTSSMSAQ
 AHSTSSPTESPHSTPLLSSPDSEQRQSV EASGHHTHHQSDSPSSVYNKQLGMSLDEQQDNNNEKLSPKP
 GTGEPVLSLHYSTEGTTTSTIKLNFTDEWSSIASSRGI GSHCKSEGQEEFVPQSSVQPPEGDSETKAP
 EESSEDVTKYQEGVSAENPVENHINITQSDKFTAKPLDSNGERNLNLDRSCGVPEESASSEKAKEPET
 SDQTSTESATNENNTNPEPQFQTEATGPSAHEETSTRDSALQTDSDDDPVLIPGARYRAGPGDRRSV
 ARIQEFFFFRRRKRKEMEELDTLIRRPLVKMVKGHRNSRTMIKEANFWGANFVMSGDCGHIF IWRHT
 AEHLMLLEADNHVVNCLQPHFPDILASSGIDYDIKIWSPLEESRIFNRKLADEVITRNLMLEETRNTI
 TVPASFMLRMLASLNHIRADRLEGRSESGQENENEDEE

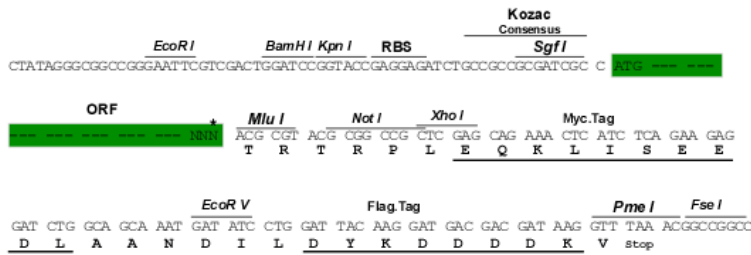
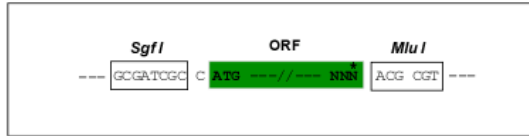
TRTRPLEQKLISEEDLAANDILDYKDDDDKV

Chromatograms: https://cdn.origene.com/chromatograms/mk8040_d08.zip

Restriction Sites: SgfI-MluI

Cloning Scheme:

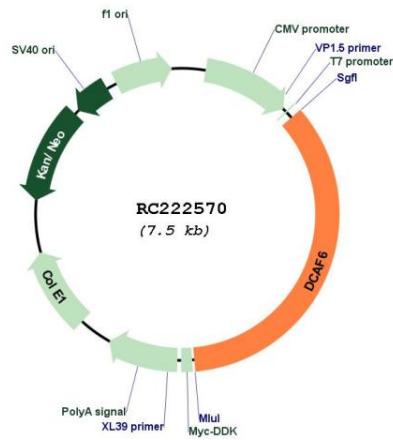
Cloning sites used for ORF Shuttling:



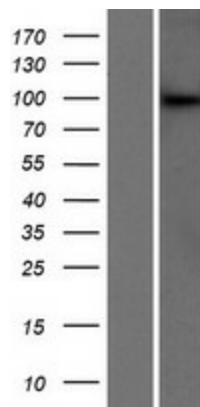
* The last codon before the Stop codon of the ORF

ACCN:	NM_018442
ORF Size:	2640 bp
OTI Disclaimer:	The molecular sequence of this clone aligns with the gene accession number as a point of reference only. However, individual transcript sequences of the same gene can differ through naturally occurring variations (e.g. polymorphisms), each with its own valid existence. This clone is substantially in agreement with the reference, but a complete review of all prevailing variants is recommended prior to use. More info
OTI Annotation:	This clone was engineered to express the complete ORF with an expression tag. Expression varies depending on the nature of the gene.
Components:	The ORF clone is ion-exchange column purified and shipped in a 2D barcoded Matrix tube containing 10ug of transfection-ready, dried plasmid DNA (reconstitute with 100 ul of water).
Reconstitution Method:	<ol style="list-style-type: none">1. Centrifuge at 5,000xg for 5min.2. Carefully open the tube and add 100ul of sterile water to dissolve the DNA.3. Close the tube and incubate for 10 minutes at room temperature.4. Briefly vortex the tube and then do a quick spin (less than 5000xg) to concentrate the liquid at the bottom.5. Store the suspended plasmid at -20°C. The DNA is stable for at least one year from date of shipping when stored at -20°C.
RefSeq:	NM_018442.3 , NP_060912.2
RefSeq Size:	3303 bp
RefSeq ORF:	2643 bp
Locus ID:	55827
UniProt ID:	Q58WW2
Cytogenetics:	1q24.2
Domains:	IQ, WD40
MW:	98.2 kDa
Gene Summary:	The protein encoded by this gene is a ligand-dependent coactivator of nuclear receptors, including nuclear receptor subfamily 3 group C member 1 (NR3C1), glucocorticoid receptor (GR), and androgen receptor (AR). The encoded protein and DNA damage binding protein 2 (DDB2) may act as tumor promoters and tumor suppressors, respectively, by regulating the level of androgen receptor in prostate tissues. In addition, this protein can act with glucocorticoid receptor to promote human papillomavirus gene expression. [provided by RefSeq, Mar 2017]

Product images:



Circular map for RC222570



Western blot validation of overexpression lysate (Cat# [LY413024]) using anti-DDK antibody (Cat# [TA50011-100]). Left: Cell lysates from untransfected HEK293T cells; Right: Cell lysates from HEK293T cells transfected with RC222570 using transfection reagent MegaTran 2.0 (Cat# [TT210002]).