

Product datasheet for RC222567

PRDM15 (NM_022115) Human Tagged ORF Clone

Product data:

Product Type:	Expression Plasmids
Product Name:	PRDM15 (NM_022115) Human Tagged ORF Clone
Tag:	Myc-DDK
Symbol:	PRDM15
Synonyms:	C21orf83; PFM15; ZNF298
Mammalian Cell Selection:	Neomycin
Vector:	pCMV6-Entry (PS100001)
E. coli Selection:	Kanamycin (25 ug/mL)
ORF Nucleotide Sequence:	>RC222567 representing NM_022115 Red=Cloning site Blue=ORF Green=Tags(s)

TTTTGTAATACGACTCACTATAGGGCGGCCGGAATTCGTCGACTGGATCCGGTACCGAGGAGATCTGCC
GCC**CGATCGCC**

ATGCCCGCCCGCCCGCCCGGCTTCCGGTGCTGCGCAGTTTCCGGAGCGGATCGCAACCCGGAGTCCGG
ATCCGATCCCGCTCTGCACATTCCAAAGGCARCCGCGCGCCCGGTCAGCCGCATGCCGACTGTT
CTTTGTTACATTCGCCGGCTGCGGGCACCGTTGGCGATCGGAGTCAAACCCGGTGGATTTCCCGGAGC
CGCTCCGGGATCGCCCTGCGCGCCCGCCCGCCCGGGTCTTCGCCCGCCCGCCCGCGCCCGCGCC
CCCGCCCGCGGGCGGCGTCTGCGCCGAGGCCAGGGGATGTCGTTATCCCCCGCCTCGGGTACAGCC
CATGCGGGTGCACGGGGGGTCCCTGGACCCCAACCCCGCTTAGAGAAGCTGAGTCCCTGGTCCCAG
ATTGGGAACAGAGGGTCACTGAGCAGCTCTTGGAAACATCTCTAGGGAATGAGGTGCCGACACTGAGC
CACTGAGCCCTGCAGTGCAGGCCTGCGACGCAATCCTGCCCTACCTCCTGGACCTTTGCACAAAATTT
TTCTGGGGAAACAGGAAAATCTGCCCCAGCCCTGGGGAAGATTGCGAACGGAGGAGAACTGGGGCA
GGCAAGGCCGAATGCGGCTATGAAACTGAGTCACTTGTAGAGCCGCACGAGATACCTTTGAACTGA
ATACACACAAGTTCAGTACTGTGAGTTCCATATGAGTTTGCACGGTCTGCTTTTACCCTTCAAGCT
GCTGGGGATGAGCGGGTGGAGGGCGTGTGGAATCAGCATTCAAGAAGTGCCAGCATGCACATTTCCCTA
AACCCTCAGCAACGGGCATCAGAGAAGCAGTTGCAGGAAGGACATGCCSGTGTGAGAGATGGCTGAAG
ATGGGAGCGAAGAGATCATGTTTCTGTTGTAAGACTGCAGCCAGTACCAGACTCCGAATGTCCCGA
GCTGGGCCAGTGGTTCATGGTCAAAGACTCCTTTGTGTTAAGCAGGGCAAGGTCTTGGCCTGCCAGCGGA
CACGTGCACACCCAGGCGGGGCAGGGGATGCGGGTTATGAGGACAGGGACAGGGCTGACCCACAGCAGC
TTCCAGAAGCAGTCCCTGCAGGCCTGGTGGGGGCTCAGTGGGCAGCAGCTGCCCTGCCGTTCCACCT
CACCTGGGGGAGGCTGTGCCACCTGGTGGCCAGGGCAGGTCATCCCTTCTCCCAACTGGAGATCAGA
CGACTGGAAGATGGAGCCGAGGGGTGTTCCGCATCACTCAGCTCGTCAAGCGGACAGATTCGGTCCCT
TTGAGTCCAGGAGGTGCGCAAATGGGAAAAGGAGTCTGCATTTCCCTGAAGGTGTTCCAGAAGGACGG
GCACCCCGTGTGCTTCGACACCTCAACGAGGATGACTGCAACTGGATGATGCTGGTGGCCAGCGGCC



GAGGCCGAGCACCAGAACCTGACGGCCTACCAGCACGGCAGCGACTGTACTTCACCACCTCCAGAGACA
 TCCCCCGGGTACCGAGCTGCGCGTGTGGTATGCGGCCTTCTATGCCAAGAAGATGGACAAGCCATGCT
 GAAGCAGGCCGGCTCTGGCGTCCACGCTGCAGGCACCCAGAAAACAGCGCCCCGTTGGAGTCGGAGCCC
 AGCCAGTGGGCGTGTAAAGTGTGTTCTGCCACCTTCTGGAGCTGCAGCTCCTCAATGAACATCTGTTGG
 GCCACTTAGAACAAAGCCAAAAGCCTTCTCCAGGCAGCCAAAGCGAGGCAGCAGCTCCCGAGAAGGAGCA
 GGACACACCCCGGGGGAAACCCCTGCAGTGCCGAGAGCGAGAATGTTGCCACCAAGAACAGAAAGAAA
 AAGCCTCGAAGGGGAGAAAACCCAAAGTGTCCAAAGCTGAGCAGCCTCTAGTCATCGTGGAAAGCAAGG
 AACCCACAGAGCAAGTGGCAGAGATCATTACCGAGGTCCCTCCGGATGAGCCTGTGAGTGAACGCCAGA
 TGAGCGGATCATGGAGCTGGTTCTGGGGAAGCTGGCCACCACCACACTGACACCAGCTCGTTCCAAAG
 TTCACCCATCATCAGAATAACACCATCACGCTCAAGAGGAGCTTAATTCTCTCAAGCAGACACGGCATCC
 GGCGCAAGCTCATCAAACAGCTCGGGGAGCACAAGCGGTTTACCAGTGAATATCTGCAGCAAGATCTT
 CCAGAACAGCAGCAACCTGAGCAGGCACGTGCGCTCGCATGGTGACAAGCTGTTTAAAGTGCAGAGAGTGT
 GCAAAATGTTTACGCCGCAAAGAGAGCCTAAAGCAGCAGCTTCCCTACAAGCACAGCAGGAACGAGGTGG
 ACGGCGAGTACAGGTACCGCTGCGGCCTTGTGAGAAGACCTCCGCATCGAGAGCGCGCTGGAGTTCCA
 CAACTGCAGGACAGATGACAAGACGTTCCAATGTGAGATGTGTTTCAAGATTCTTCCACCAACAGCAAC
 CTCTCAAAGCACAGAAGAAGCAGCGGCACAAGAAGTTTGCCTGTGAGGTCTGCAGCAAGATGTTCTACC
 GCAAGGACGTATGCTGGACCACCAGCGCCGGCACCTGGAAGGAGTGCAGCGAGTGAAGCGAGAGGACCT
 GGAGGCCGGTGGGGAGAACCTGGTCCGTTACAAGAAGGAGCCTTCCGGGTGCCGGTGTGTGGCAAGGTG
 TTCTCCTGCCGGAGCAATATGAACAAGCACCTGCTCACCCACGSGACAAGAAGTACACCTGCGAGATCT
 GCGGGCGCAAGTTCTTCCGCGTGGATGTGCTCAGGACCACATCCATGTCCACTTCAAGGACATCGCGTT
 GATGGATGACCACCAGAGGAAGAGTTTATCGGCAAGATCGGGATCTCCTCGGAAGAAAACGATGACAAT
 TCTGACGAGAGCGCAGACTCGGAGCCTCACAAGTACAGCTGCAAGCGGTGCCAGCTCACCTTCGGCCGGG
 GGAAGGAGTACCTGAAGCACATCATGGAGGTGCACAAGGAGAAGGGCTWTGGCTGCAGCATCTGCAACCG
 GCGCTTTGCACTGMAGGCCACCTACCACGCCACATGGTATCCACCGTAAAACCTGCCGGACCCCAAC
 GTGCAGAAGTACATCCACCCCTGCGAGATCTGCGGGCGGATCTTCAACAGCATCGGGAACCTGGAGCGCC
 ACAAGCTCATCCACACAGGTGTGAAGAGCCACGCTGCGAGCAGTGTGGGAAGTCTTTGCCAGGAAGGA
 CATGCTGAAGGAGCAGTGCCTGTGCACGACAACGTCCGCGAGTACCTGTGTGCCGAGTGTGGAAAGGC
 ATGAAGACCAAGCAGCGCTGCGCCACCACATGAAGCTGCACAAGGGCATCAAGGAGTACGAGTGAAGG
 AGTGCCACCGCAGGTTCCGCGAGAAGGTCAACATGCTCAAGCACTGCAAGCGGCACACGGGGATTAAGA
 TTTTATGTGTGAATTGTGTGGAAAGACATTCAGCGAGAGGAACACCATGGAGACCCACAAGCTCATCCAC
 ACAGTGGCAAGCAGTGGACGTGCTCCGTGTGCGACAAGAAGTACGTGACCGAGTACATGCTGCAGAAGC
 ACGTTACGCTCACACACGACAAGGTGGAGGCGCAGAGCTGCCAGCTGTGCGGGACCAAGGTGCCACCG
 GGCTCCATGAGCCGACACATGCGGCGCAAGCACCCCGAGGTGCTCGCGGTGAGGATCGATGACCTGGAC
 CACCTCCCGGAGACCACCACATCGACGCTCCTCCATTGGCATCGTCCAGCCTGAGCTGACTCTGGAGC
 AGGAGGATTTGGCCGAAGGGAAGCACGGGAAAGCTGCCAAGCGAAGTACAAGAGAAAGCAGAAGCCAGA
 AGAGGAGGCGGGTGTCCGGTGCCCGAGGACGCCACCTTACGCGAATACTCAGAGAAAGAGACGGAGTTC
 ACAGGCAGTGTAGGCGACGAGACCAATCCGCGAGTACAGAGCATTACAGCAGGTAGTGGTACCCTGGGTG
 ACCCAAATGTGACCACACCATCGAGCTCAGTCGGCTTAACCAACATCACCGTACCCCATCACCACTGC
 GGCCGCGACTCAGTTTACCAATCTCCAGCCGGTGGCCGTGGGGCACCTTACCACCCCTGAACCGCAGTTA
 CAGCTGGACAACCTCAATCCTGACCGTACCTTTGATACCGTACGCGGCTGTGCCATGTTGACAACCGCC
 AAAATGACGTCCAGATCCACCCCGACCCGGAAGCCTCGAACCCACAGTCTGTGGCCATTTCATCAACCT
 GACGACCCCTGGTCAACTCCATCACGCCCTGGGGAGCCAGCTTAGTGACCAGCACCCGCTCACGTGGCGG
 GCAGTGCCCCAGACTGACGTCTTGCCACCCCTCGCAGCCGAGGCACCCCAACAGCAGGCGGCCAGCCCC
 AAGTGCAGGCGGAGCAGCAGCAGCAGCAGATGTACAGCTAC

ACGCGTACGCGGCCGCTCGAGCAGAACTCATCTCAGAAGAGGATCTGGCAGCAATGATATCCTGGATT
 ACAAGGATGACGACGATAAGGTTTAA

Protein Sequence: >RC222567 representing NM_022115
 Red=Cloning site Green=Tags(s)

MPRRRPPASGAAQFPERIATRSPDPIPLCTFQRXPRAAPVQPPCRLFFVTFAGCGHRWRSESKPGWISRS
 RSGIALRAARPPGSSPPRPAAPRPPPPGGVVAEAPGDVVIIPRPRVQPMRVARGGPWTPNPAFREAESWSQ
 IGNQRVSEQLLETSLGNEVSDTEPLSPASAGLRNPALPPGPFQNF SWGNQENLPPALGKIANGGGTGA
 GKAECGYETESHLLPEHEIPLNVNTHKFSDFCEFPYEFCTVCFSPFKLLGMSGVEGVWNQHSRSASMHFTL
 NHSATGI REAGCRKDMXVSEMAEDGSEEIMFIWCEDCSQYHDSECELPVVMVKDSFVLSRARSWPASG
 HVHTQAGQGMRGYEDRDRADPQQLPEAVPAGLVRRLSGQQLPCRSTLTWGRLCHLVAQGRSSLPPNLEIR
 RLEDGAEGVFAITQLVKRTQFGPFESRRVAKWEKESAFPLKVFQKDGHPVCFDTSNEDDCNWMMLVRPAA
 EAEHQNL TAYQHGSVDVYFTTSRDIPPGTEL RVWYAAFYAKKMDKPKLKQAGSGVHAAGTPENSAPVESEP
 SQWACKVCSATFLELQLLNEHLLGHLEQAKSLPPGSQSEAAAPEKEQDTPRGEPPAVPESENVATKEQKK
 KPRRGRKPKVSKAEQPLVIVEDKEPTEQVAEIIITEVPPDEPVSATPDERIMELVLGKLATTTTDTSSVPK
 FTHHQNTITLKRSLILSSRHGIRRLIKQLGEHKRVYQCNICSKIFQNSSNL SRHVRSHGDKL FKCEEC
 AKLFSRKESELKQHVSYKHSRNEVDGEYRYRCGTCEKTFRIE SALEFHNCRTDDKTFQCEMCFRFFSTNSN
 LSKHKKKHGDKKFACEVCSKMFYRKDVMLDHQRRHLEGVRRVKREDLEAGGENLVRYKKEPSCGCPVCGKV
 FSCRSNMNKHLLTHXDKKYTCEICGRKFFRVDVLRDHIHVHFKDIALMDDHQREEFIGKIGISSEENDDN
 SDESADSEPHKYSCKRCQLTFGRGKEYLKHIMEVHKEKGXGCSICNRRFALXATYHAMV IHRENLPDPN
 VQKYIHPCEICGRIFNSIGNLERHKL IHTGVKSHACEQCCKSFARKDMLKEHMRVHDNVREYLCAECGKG
 MKTKHALRHHMKLHKGIKEYECKECHRRAQKVNMLKHCKRHTGIKDFMCEL CGKTF SERNTMETHKLIH
 TVGKQWTCVCDKKYVTEYMLQKHVQL THDKVEAQSCQLCGTKVSTRASMSRHMRRKHPEVLAVRIDDL
 HLPETTTIDASSIGIVQPELTLEQEDLAEGKHGKAARKSHKRKQKPEEEAGAPVPEDATFSEYSEKETEF
 TGSVGDETNSAVQSIQQVVVTLGDPNVTTPSSSVGLTNI TVTPIITAAATQFTNLQPVAVGHL TTPERQL
 QLDNSILTVTFDTVSGSAMLHNRQNDVQIHPQPEASN PQSVAHF INLTTLVNSITPLGSQLSDQHPLTWR
 AVPQTDVLPSPQPAPPQQAAPQVQAEQQQQMYSY

TRTRPLEQKLISEEDLAANDILDYKDDDDKV

Chromatograms: https://cdn.origene.com/chromatograms/mk8040_e10.zip

Restriction Sites: SgfI-MluI

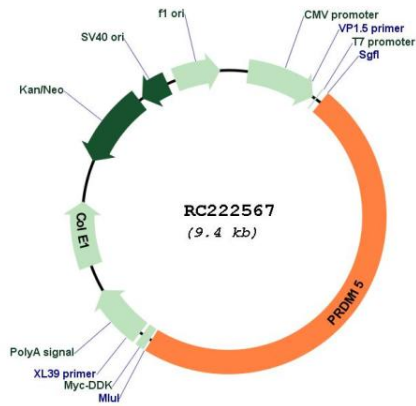
Cloning Scheme:



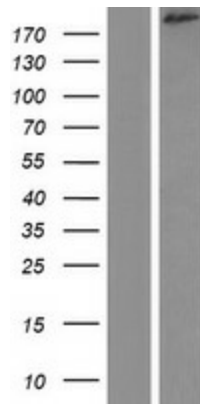
ACCN: NM_022115

ORF Size:	4521 bp
OTI Disclaimer:	The molecular sequence of this clone aligns with the gene accession number as a point of reference only. However, individual transcript sequences of the same gene can differ through naturally occurring variations (e.g. polymorphisms), each with its own valid existence. This clone is substantially in agreement with the reference, but a complete review of all prevailing variants is recommended prior to use. More info
OTI Annotation:	This clone was engineered to express the complete ORF with an expression tag. Expression varies depending on the nature of the gene.
Components:	The ORF clone is ion-exchange column purified and shipped in a 2D barcoded Matrix tube containing 10ug of transfection-ready, dried plasmid DNA (reconstitute with 100 ul of water).
Reconstitution Method:	<ol style="list-style-type: none">1. Centrifuge at 5,000xg for 5min.2. Carefully open the tube and add 100ul of sterile water to dissolve the DNA.3. Close the tube and incubate for 10 minutes at room temperature.4. Briefly vortex the tube and then do a quick spin (less than 5000xg) to concentrate the liquid at the bottom.5. Store the suspended plasmid at -20°C. The DNA is stable for at least one year from date of shipping when stored at -20°C.
RefSeq:	NM_022115.2 , NP_071398.2
RefSeq Size:	4710 bp
RefSeq ORF:	3624 bp
Locus ID:	63977
UniProt ID:	P57071
Cytogenetics:	21q22.3
MW:	169.1 kDa
Gene Summary:	Sequence-specific DNA-binding transcriptional regulator. Plays a role as a molecular node in a transcriptional network regulating embryonic development and cell fate decision. Stimulates the expression of upstream key transcriptional activators and repressors of the Wnt/beta-catenin and MAPK/ERK pathways, respectively, that are essential for naive pluripotency and self-renewal maintenance of embryonic stem cells (ESCs). Specifically promotes SPRY1 and RSPO1 transcription activation through recognition and direct binding of a specific DNA sequence in their promoter regions. Involved in early embryo development (By similarity). Plays also a role in induced pluripotent stem cells (iPSCs) reprogramming (PubMed:28740264).[UniProtKB/Swiss-Prot Function]

Product images:



Circular map for RC222567



Western blot validation of overexpression lysate (Cat# [LY411787]) using anti-DDK antibody (Cat# [TA50011-100]). Left: Cell lysates from untransfected HEK293T cells; Right: Cell lysates from HEK293T cells transfected with RC222567 using transfection reagent MegaTran 2.0 (Cat# [TT210002]).