

Product datasheet for RC222566

CHTF8 (NM_001039690) Human Tagged ORF Clone

Product data:

Product Type: Expression Plasmids
 Product Name: CHTF8 (NM_001039690) Human Tagged ORF Clone
 Tag: Myc-DDK
 Symbol: CHTF8
 Synonyms: CTF8; DERP
 Mammalian Cell Selection: Neomycin
 Vector: pCMV6-Entry (PS100001)
 E. coli Selection: Kanamycin (25 ug/mL)
 ORF Nucleotide Sequence: >RC222566 ORF sequence
 Red=Cloning site Blue=ORF Green=Tags(s)

TTTTGTAATACGACTCACTATAGGGCGGCCGGAATTCGTCGACTGGATCCGGTACCGAGGAGATCTGCC
 GCCCGCATCGCC

ATGGTGCAAATTGTTATTTCCAGTGCAGGGCTGGAGGCCTGGCAGAATGGGTGCTGATGGAGCTACAGG
 GGGAGATCGAGGCTCGCTACAGCACTGGATTAGCTGGAAACCTCTGGGAGACCTACATTACACCACTGA
 GGGAAATCCCTGTGCTGATCGTGGGCATCATATCCTGTATGGGAAATCATCCACCTGGAGAAACCTTTT
 GCAGTCCTTGTCAAACACTCCTGGGGATCAGGACTGTGATGAGCTTGGCCGCGAGACTGGCACCCGGT
 ACCTGGTGACAGCACTCATCAAAGACAAGATCCTTTTCAAACCCGCCCAAGCCATTATCACCAGCGT
 CCCAAGAAAGTA

ACGCGTACGCGGCCGCTCGAGCAGAACTCATCTCAGAAGAGGATCTGGCAGCAAATGATATCCTGGATT
 ACAAGGATGACGACGATAAGGTTTAA

Protein Sequence: >RC222566 protein sequence
 Red=Cloning site Green=Tags(s)
 MVQIVISSARAGGLAEWVLMELQGEIARYSTGLAGNLLGDLHYTTEGIPVLIVGHHILYGKIIHLEKPF
 AVLVKHTPGDQDCDELGRETGTRYLVLTALIKDKILFKTRPKPIITSVPPKV

TRTRPLEQKLISEEDLAANDILDYKDDDDKV

Chromatograms: https://cdn.origene.com/chromatograms/mk6419_e09.zip

Restriction Sites: SgfI-MluI



[View online »](#)

Cloning Scheme:


ACCN: NM_001039690

ORF Size: 363 bp

OTI Disclaimer: The molecular sequence of this clone aligns with the gene accession number as a point of reference only. However, individual transcript sequences of the same gene can differ through naturally occurring variations (e.g. polymorphisms), each with its own valid existence. This clone is substantially in agreement with the reference, but a complete review of all prevailing variants is recommended prior to use. [More info](#)

OTI Annotation: This clone was engineered to express the complete ORF with an expression tag. Expression varies depending on the nature of the gene.

Components: The ORF clone is ion-exchange column purified and shipped in a 2D barcoded Matrix tube containing 10ug of transfection-ready, dried plasmid DNA (reconstitute with 100 ul of water).

Reconstitution Method:

1. Centrifuge at 5,000xg for 5min.
2. Carefully open the tube and add 100ul of sterile water to dissolve the DNA.
3. Close the tube and incubate for 10 minutes at room temperature.
4. Briefly vortex the tube and then do a quick spin (less than 5000xg) to concentrate the liquid at the bottom.
5. Store the suspended plasmid at -20°C. The DNA is stable for at least one year from date of shipping when stored at -20°C.

RefSeq: [NM_001039690.5](#)

RefSeq Size: 2934 bp

RefSeq ORF: 366 bp

Locus ID: 54921

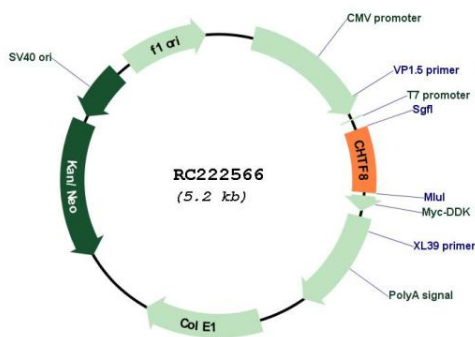
UniProt ID: [P0CG13](#)

Cytogenetics: 16q22.1

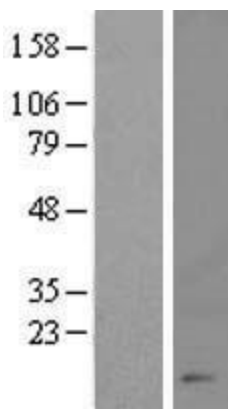
MW: 13.3 kDa

Gene Summary: This gene encodes a short protein that forms part of the Ctf18 replication factor C (RFC) complex that occurs in both yeast and mammals. The heteroheptameric RFC complex plays a role in sister chromatid cohesion and may load the replication clamp PCNA (proliferating cell nuclear antigen) onto DNA during DNA replication and repair. This gene is ubiquitously expressed and has been shown to have reduced expression in renal and prostate tumors. Alternatively spliced transcript variants have been described. This gene has a pseudogene on chromosome X. [provided by RefSeq, Oct 2018]

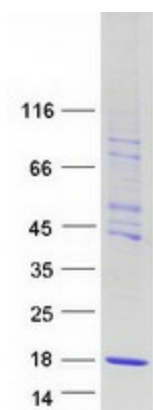
Product images:



Circular map for RC222566



Western blot validation of overexpression lysate (Cat# [LY421694]) using anti-DDK antibody (Cat# [TA50011-100]). Left: Cell lysates from untransfected HEK293T cells; Right: Cell lysates from HEK293T cells transfected with [RC222808] using transfection reagent MegaTran 2.0 (Cat# [TT210002]).



Coomassie blue staining of purified CHTF8 protein (Cat# [TP322566]). The protein was produced from HEK293T cells transfected with CHTF8 cDNA clone (Cat# RC222566) using MegaTran 2.0 (Cat# [TT210002]).