

## Product datasheet for **RC222565**

### MAP9 (NM\_001039580) Human Tagged ORF Clone

#### Product data:

Product Type:	Expression Plasmids
Product Name:	MAP9 (NM_001039580) Human Tagged ORF Clone
Tag:	Myc-DDK
Symbol:	MAP9
Synonyms:	ASAP
Mammalian Cell Selection:	Neomycin
Vector:	pCMV6-Entry (PS100001)
E. coli Selection:	Kanamycin (25 ug/mL)



[View online »](#)

ORF Nucleotide  
Sequence:

>RC222565 representing NM\_001039580  
Red=Cloning site Blue=ORF Green=Tags(s)

TTTTGTAATACGACTCACTATAGGGCGGCCGGAATTCGTCGACTGGATCCGGTACCGAGGAGATCTGCC  
GCCCGCATCGCC

ATGTCTGATGAAGTTTTAGCACCACTTTGGCATATACAAAGAGTCCAAAAGTTACAAAAGAAGTACTT  
TCCAGGATGAGCTAATAAGAGCAATTACAGCTCGCTCAGCCAGACAAAGGAGTTCGAATACTCAGATGA  
CTTTGACAGTGATGAGATTGTTTCTTTAGTGATTTTTCTGACACTTCAGCAGATGAAAATTCAGTTAAT  
AAAAAATGAATGACTTTCATATATCAGATGATGAAGAAAAGAATCCTTCAAACCTATTGTTTTGAAAA  
CCAATAAATCAAACGGTAACATAACCAAAGATGAGCCAGTGTGTGCCATCAAAAATGAAGAGGAAATGGC  
ACCTGATGGGTGTGAAGACATTGTTGAAAATCTTTCTCTGAATCTCAAATAAGGATGAGGAATTTGAA  
AAAGACAAAATAAAAATGAAACCTAAACCCAGAATCTTTCAATTAAGGACACATCTTCAGCAGAAAACA  
ACAGCCTTGACACAGATGATCACTTTAAACCATCACCTCGGCCAAGGAGTATGTTGAAAAAGAAAAGTCA  
CATGGAGGAGAAGGATGGACTAGAAGATAAAGAAAAGTCCCTCAGTGAAGAATTGGAGTTACATTCTGCA  
CCTTCTCCCTTCCAACGCCGAATGGCATACAATTAGAAGCTGAGAAAAAGCATTCTCTGAAAACCTTG  
ATCCTGAGGATTCATGCTTAACAAGTCTAGCATCATCACTTAAACAATTCCTGGAGATTCCTTTTTTC  
ACCAGGATCTGAGGGAACGCATCTGAAAAGATCCAAATGAAGAAATCACTGAAAACCATAAATCCTTG  
AAATCAGATGAAAATAAGAGAAATTCATTTTCAGCAGACCATGTGACTACTGCAGTTGAGAAATCCAAGG  
AAAGTCAAGTGACTGCTGATGACCTTGAAGAAGAAAAGGCAAAAGCGGAAGTATTATGGATGATGACAG  
AACAGTTGATCCACTACTATCTAAATCTCAGAGTATCTTAATATCTACCAGTGCAACAGCATCTTCAAAG  
AAAACAATTGAAGATAGAAATATAAAGAATAAAAAGTCAACAAAATAATAGAGCATCCAGTGCATCTGCCA  
GATTAATGACCTCTGAGTTTTTGAAGAAATCTAGTTCTAAAAGGAGAAGTCCATCGACAAGTACCTCTTC  
TCACTATTTAGGGACTTTAAAAGTCTTGGACCAAAAACCTTACAGAAAACAGAGCATAGAACCTGATAGA  
GCAGATAACATAAGGGCAGCTGTTTATCAGGAGTGGTTAGAAAAGAAAAATGTGTATTTACATGAAATGC  
ACAGAATAAAAAGAAATGAAAAGTAAAAGTAAAGGATCCAAAATGAACAGAAAAAGCTGCTAAAAGAGA  
AGAAGCATTAGCATCATTGAGGCCTGGAAGGCTATGAAAGAAAAGGAAGCAAGAAAAATAGCTGCCAAA  
AAGAGGCTTGAAGAAAAAACAAGAAGAAAAGTGAAGAAGAAAATGCTGCAAGAAAAGGAGAAGCACTAC  
AAGCTTTTAAAAATGAAAAGAGAAAAAGATGGAATATCTTAAAGAGAAAAATAGAAAGGAGAGAGAATA  
TGAAGAGCAAGAAAACAGAAAGAGGAGGAAAAGTGTGCCGAGAAAAAGAAAGATAATTTAACTGCTGTT  
GAGAAATGGAATGAAAAAAGGAAGCTTTTTTCAAGCAAAAAGGAAAAAGAAAAATAAATGAGAAAAGAA  
AGGAAGAACTGAAAAGAGCTGAGAAAAAGATAAAGATAAACAAGCTATTAATGAATATGAAAAATGGCT  
GGAAAAAAGGAAAAACAAGAAAGAAATGAACGAAAACAGAAAGAACGTATTCCTTTCTTGAAGTGAG  
GCACCTCCTCGTGGAGCCCTCAAGCAGAAGTGTGTTGCAAAAAGTGT

ACGCGTACGCGGCCGCTCGAGCAGAACTCATCTCAGAAGAGGATCTGGCAGCAATGATATCCTGGATT  
ACAAGGATGACGACGATAAGGTTTAA

**Protein Sequence:** >RC222565 representing NM\_001039580  
Red=Cloning site Green=Tags(s)

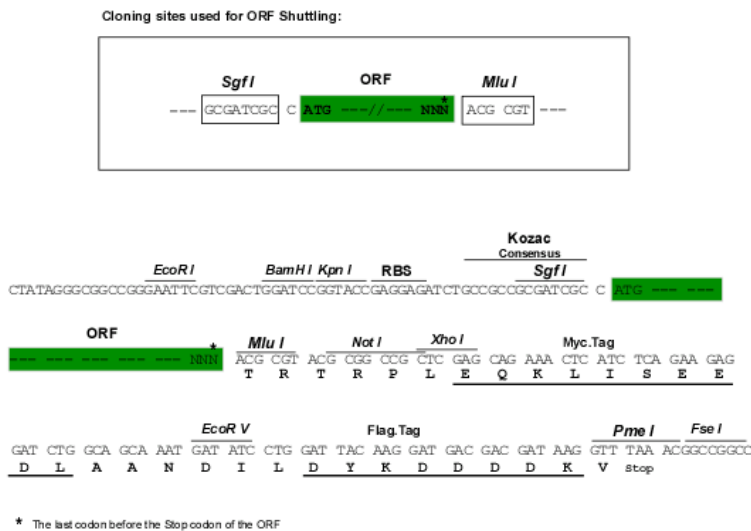
MSDEVFSTTLAYTKSPKVKRTTFQDELIRAITARSARQRSSEYSDDFDSDEIVSLGDFSDTSADENSVN  
 KKMNDFFHISDDEEKNSPKLLFLKTNKSNNGNITKDEPVCAIKNEEEMAPDGCEDIVVKSFSSESQNKDEEFE  
 KDKIKMKPKPRILSIKSTSSAENSLDTHDFKPSRPRMSMLKKKSHMEEKDGLDEDKETALEELHSA  
 PSSLPTPNGIQLEAEKKAFSENLDPEDSCLTSLASSLKQILGDSFSPGSEGNASGKDPNEEITENHNSL  
 KSDENKENSFSADHVTTAVEKSSESQVTADDLEEEKAKAELIMDDDRTPDLLSKSQSILISTSATASSK  
 KTIEDRNIKNKKSTNNRASSASARLMTSEFLKKSSKRRTPTSTTSSHYLGTLKVLQKPSQKQSIQEPDR  
 ADNIRAAVYQEWLEKKNVYLHEMHRIKRIESENLRIQNEQKKAAREALASFEAWKAMKEKEAKKIAAK  
 KRLEEKNKKTEEENAARKGEALQAFEKWKEMEYLKEKNREREYERAKKQKEEETVAEKKDNLTAV  
 EKWNEKKEAFFKQKEKEKINEKRKEELKRAEKDKDKQAINYEKWLLENKEKQERIERKQKRRHSFLESE  
 ALPPWSPPSRTVFAKVF

TRTRPLEQKLISEEDLAANDILDYKDDDDKV

**Chromatograms:** [https://cdn.origene.com/chromatograms/ja1378\\_h11.zip](https://cdn.origene.com/chromatograms/ja1378_h11.zip)

**Restriction Sites:** SgfI-MluI

**Cloning Scheme:**



**ACCN:** NM\_001039580

**ORF Size:** 1941 bp

**OTI Disclaimer:** The molecular sequence of this clone aligns with the gene accession number as a point of reference only. However, individual transcript sequences of the same gene can differ through naturally occurring variations (e.g. polymorphisms), each with its own valid existence. This clone is substantially in agreement with the reference, but a complete review of all prevailing variants is recommended prior to use. [More info](#)

**OTI Annotation:** This clone was engineered to express the complete ORF with an expression tag. Expression varies depending on the nature of the gene.

**Components:** The ORF clone is ion-exchange column purified and shipped in a 2D barcoded Matrix tube containing 10ug of transfection-ready, dried plasmid DNA (reconstitute with 100 ul of water).

**Reconstitution Method:**

1. Centrifuge at 5,000xg for 5min.
2. Carefully open the tube and add 100ul of sterile water to dissolve the DNA.
3. Close the tube and incubate for 10 minutes at room temperature.
4. Briefly vortex the tube and then do a quick spin (less than 5000xg) to concentrate the liquid at the bottom.
5. Store the suspended plasmid at -20°C. The DNA is stable for at least one year from date of shipping when stored at -20°C.

**RefSeq:** [NM\\_001039580.2](#)

**RefSeq Size:** 7333 bp

**RefSeq ORF:** 1944 bp

**Locus ID:** 79884

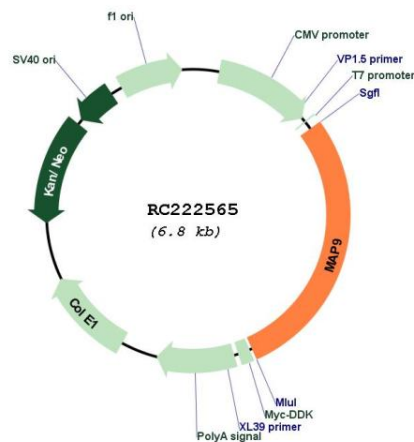
**UniProt ID:** [Q49MG5](#)

**Cytogenetics:** 4q32.1

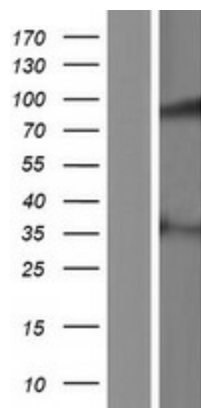
**MW:** 74.1 kDa

**Gene Summary:** ASAP is a microtubule-associated protein required for spindle function, mitotic progression, and cytokinesis (Saffin et al., 2005 [PubMed 16049101]).[supplied by OMIM, Mar 2008]

### Product images:



Circular map for RC222565



Western blot validation of overexpression lysate (Cat# [LY422080]) using anti-DDK antibody (Cat# [TA50011-100]). Left: Cell lysates from untransfected HEK293T cells; Right: Cell lysates from HEK293T cells transfected with RC222565 using transfection reagent MegaTran 2.0 (Cat# [TT210002]).