

Product datasheet for RC222562

SA1 (STAG1) (NM_005862) Human Tagged ORF Clone

Product data:

Product Type:	Expression Plasmids
Product Name:	SA1 (STAG1) (NM_005862) Human Tagged ORF Clone
Tag:	Myc-DDK
Symbol:	SA1
Synonyms:	MRD47; SA1; SCC3A
Mammalian Cell Selection:	Neomycin
Vector:	pCMV6-Entry (PS100001)
E. coli Selection:	Kanamycin (25 ug/mL)
ORF Nucleotide Sequence:	>RC222562 representing NM_005862 Red=Cloning site Blue=ORF Green=Tags(s)

TTTTGTAATACGACTCACTATAGGGCGGCCGGAATTCGTCGACTGGATCCGGTACCGAGGAGATCTGCC
GCCCGATCGCC

ATGATTACTTCAGAATTACCACTGTTACAGGATCAACTAATGAACTACTGCCATTCCGATGCTGGCA
GCGAGCTTGAAGAAACAGAGGTCAAAGGAAAAAGAAAAGGGTCTGCTGGCCGGCCTCCACTACAAA
TAAGAACTCGAAAATCTCCAGGTGAGAAGAGCAGAATTGAAGCTGGAATTAGAGGAGCAGGCCGTGGA
AGAGCTAATGGACACCTCAACAGAATGGGAAGGGGAGCCTGTCACATTATTTGAGGTGGTAACTGG
GGAAAAGTGCAATGCAGTCCGTGGTGGATGACTGGATTGAATCATATAACAAGACAGGGACATCGCACT
TCTGGATTAATCAACTTTTTATCCAGTGTTCAGGATGTCGAGGACTGTGAGAATAGAGATGTTTCGA
AATATGCAGAATGCAGAAATCATCAGAAAAATGACTGAAGAATTTGATGAGGACAGTGGTATTATCCTC
TTACCATGCTGGACCTCAGTGGAAAAATTTTCGTTCAAATTTTGTGAATTTATTTGGAGTCTGATTTCG
ACAGTGTGAGTATAGCATAATTTATGATGAGTATATGATGGACACAGTAATCTCCCTTTGACGGGTTTG
TCAGACTCCAGGTGAGACTTTTAGGCATACAAGTACCTGGCTGCCATGAAGCTCATGACTGCTCTGG
TGAATGTTGCCTTAACTCAGTATTCATCAGGATAATACCCAGAGACAATGAAGCCGAGAGAAAATAA
AATGATTGGGAAGAGAGCCAATGAAAGTTGGAGTTACTACTTCAGAAACGAAAGAGCTGCAAGAAAAT
CAGGATGAAATCGAAAATATGATGAATCTATTTTAAAGGTATATTTGTTTCATAGATACCGTGATGCTA
TTGCTGAGATTAGAGCCATTTGTATTGAAGAAATTTGGAGTATGGATGAAAATGTATAGTATGCCTTCT
AAATGACAGTTACCTAAAATATGTTGGCTGGACTCTTCATGACAGGCAAGGGGAAGTCAAGCTGAAGTGT
TTGAAAGCTCTGCAGAGTCTATATACCAATAGAGAATTATTTCCCAAATTTGAACTATTCCTAACCAGT
TCAAGGATCGCATTGTATCAATGACACTTGATAAAGAATATGATGTTGCTGTGGAAGCTATTCGATTGGT
TACTCTGATACTTCATGGAAGTGAAGAAGCTCTTCCAATGAAGACTGTGAAAATGTTTACCCTTGGT
TACTCGGCACATCGCCCTGTTGCTGTGGCAGCTGGAGAGTTTCTTCAAAAAAGCTATTTAGCAGACATG
ACCCACAAGCAGAAGAAGCATTAGCAAAGAGGAGGGGAAGAAACAGCCCAATGGAACCTCATTAGGAT
GCTGGTCTTTTCTTTTGAAGTGAAGTACATGAACATGCAGCCTACTTGGTGGACAGTTTATGGGAG



[View online »](#)

AGCTCTCAAGAACTGTTGAAAGACTGGGAATGTATGACAGAGTTGCTATTAGAAGAACCTGTTCAAGGAG
AGGAAGCAATGTCTGATCGTCAAGAGAGTGCTCTTATAGAGCTAATGGTTTGTACAAATTCGTCAGCTGC
TGAGGCACATCCTCCAGTGGGAAGGGTACCGCAAGAGAGTGCTAACTGCCAAAGAAAGGAAAACCTCAA
ATTGATGATAGAAAACAAATTGACTGAACATTTTATTACACTTCTATGTTACTGTCAAAGTATTCTG
CAGATGCAGAGAAGGTAGCAAACCTGCTACAAATCCCACAGTATTTTATTGAGAAATCTACAGCACAGG
TAGAATGGAAAAGCATCTGGATGCTTTATTTAAAACAGATTAAGTTTGTGGAGAAAACAGTGAATCA
GATGTTCTAGAAGCCTGCAGTAAAACCTATAGTATCTTATGCAGTGAAGAATATACCATCCAGAACAGAG
TTGACATAGCTCGAAGCCAGCTGATTGATGAGTTTGTAGATCGATTCAATCATTCTGTGGAAGACCTATT
GCAAGAGGGAGAAGAAGCTGATGATGATGACATTTACAATGTTCTTTCTACATTAAGACGGTTAACTTCT
TTTCACAAATGCACATGATCTCACAAAATGGGATCTCTTTGGTAATTGCTACAGATTATTGAAGACTGGAA
TTGAACATGGAGCCATGCCAGAACAGATAGTCGTGCAAGCACTGCAGTGTCCCATTATTCGATTCTTTG
GCAGTTGGTAAAATTACTGATGGCTCTCCTTCCAAAGAGGATTTGTTGGTATTGAGGAAAACGGTGAAA
TCCTTTTTGGCTGTTGCCAGCAGTGCCTGTCTAATGTTAATACTCCAGTGAAGAACAGGCTTTCATGT
TACTCTGTGATCTTCTGATGATTTTCAGCCACCAATTAATGACAGGTGGCAGAGAGGGCCTTCAGCCTT
GGTGTTCATCCAGATACTGGACTCCAATCTGAACTCCTCAGTTTGTGATGGATCACGTTTTTATTGAC
CAAGACGAGGAGAACCAGAGCATGGAGGGTGTGAAGAAGATGAAGCTAATAAAATTGAGGCCTTACATA
AAAGAAGGAATCTACTTGCTGCTTTCAGCAAACCTATCATTATGACATTGTTGACATGCATGCAGCTGC
AGACATCTTCAAACACTACATGAAGTATTAACAATGACTATGGTATATTATTAAGGAAAACACTGAGTAAA
ACCAGGCAGATTGATAAAATTCAGTGTGCCAAGACTCTCATTCTCAGTTTGAACAGTTATTTAATGAAC
TTGTTCAAGAGCAAGGTCCCAACCTAGATAGGACATCTGCCCATGTCAGTGGCATTAAAGAACTGGCAGC
TCGCTTTGCCCTTACATTTGGATTGGACCAGATTAAGACACGAGAAGCAGTTGCCACACTTCACAAGGAT
GGCATAGAGTTTGCATTTAATAACAAAATCAGAAAGGACAAGAGTATCCACCTCCTAATCTGGCTTTTC
TTGAAGTACTAAGTGAATTTTCTTAACTTCTCGACAGGACAAAAGACAGTTCAATTCATACCTAGA
GAAATTCCTTACCGAGCAGATGATGAAAGGAGGGAGGATGTATGGCTTCCACTCATCTCTATAGAAAT
TCATTAGTCACTGGGGTGAAGATGATAGAATGTCTGTGAACAGTGAAGTAGCAGCAGCAAAACCTCAT
CAGTAAGGAATAAGAAAGGACGACCTCCACTTCATAAAAAACGAGTAGAAGATGAGAGTCTGGATAACAC
ATGGCTAAACAGGACTGACACCATGATTCAGACTCCTGGCCCCCTGCCAGCACCACAACCTCACATCCACT
GTACTGCGGGAGAACAGTCGGCCATGGGAGACCAGATTCAAGAACCTGAGTCTGAACATGGTTCTGAAC
CAGACTTTTTACACAATCCTCAGATGCAGATCTTTGGTTAGGCCAGCCGAAGTTAGAAGACTTAAATCG
GAAGGACAGAACAGGAATGAACTACATGAAAGTGAGAACTGGAGTGAGGCATGCTGTTCCGGGTCTAATG
GAGGAAGATGCTGAGCCATCTTTGAAGATGTGATGATGTCATCCGAAGCCAGTTAGAAGATATGAATG
AAGAATTTGAGGACACCATGGTTATTGATCTGCCTCCATCAAGAAATCGGCGAGAGAGAGCTGAGCTAAG
GCCAGACTTCTTTGACTCTGCAGCTATCATAGAAGATGATTCAGGATTTGGAATGCCTATGTTC

ACGCGTACGCGGCCGCTCGAGCAGAACTCATCTCAGAAGAGGATCTGGCAGCAATGATATCCTGGATT
ACAAGGATGACGACGATAAGGTTTAA

Protein Sequence: >RC222562 representing NM_005862
 Red=Cloning site Green=Tags(s)

```

MITSELPVLQDSTNETTAHSDAGSELEETEVEKGRKRGRPRPPSTNKKPRKSPGKESRIEAGIRGAGRG
RANGHPQQNGEGEPVTLFEVVKLGKSAMQSVVDDWIESYKQDRDIALLDLINF IQCSGCRGTVRIEMFR
NMQNAE IIRKMT EEFDEDSGDYPLTMPGPQWKKFRSNFCEFIGVLIRQCQYSIIYDEYMMDTVISLLTGL
SDSQVRAFRHTSTLAAMKLM TALVNVALNLSIHQDNTQRQYEAERNKMI GK RANERLELLLQKRKELQEN
QDEIENMMNSIFKGI FVHRYRDAIAEIRAICIEEIGVWMKMYSDAFLNDSYLKYVGWTLHDRQGEVRLKC
LKALQSLYTNRELF PKLELFTNRFKDRIVSMTLDKEYDVAVEAIRLVTLILHGSEALSNEDCENVYHLV
YSAHRPVAVAAGEFLHKKLFSRHDPQAEALAKRRGRNSPNGNLRMLVLFLESELHEHAAYLVDSLWE
SSQELLKDWECMTELLLEEPVQGEEMSDRQESALIELMVCTIRQAAEAHPPVGRGTGKRVLTA KERKTQ
IDDRNKLTEHFIIITL PMLLSKYSADA EKVANLLQIPQYFDLEIYSTGRMEKHL DALLKQIKFVVEKHVES
DVLEACSKTYSILCSEETYIQNRVDIARSQLIDEFVDRFNH SVEDLLQEGEEADDDDIY NVLSTLKR L TS
FHNAHDLTKWDLFGNCRYLLKTGIEHGAMPEQIVVQALQC SHYSILWQLVKITDGSPSKEDLLVLRKTVK
SFLAVCQQCLSNVNTPVKEQAFMLLCDLLMIFSHQLMTGGREGLQPLVFNPD TGLQSELLSFVMDHVFID
QDEENQSMEGDEEDEANKIEALHKRRNLLAAF SKLIIYDIDVMHAAADIFKHYMKYNDYGDIIKETLSK
TRQIDKIQCAKTLILSLQQLFNELVQE QGP NLDRTSAHVSGIKELARRFALTFLGLDQIKTREA VATLHKD
GIEFAFKYQNKQGEYPPNLAFLVLELSEFSSKLLRQDKKTVHSYLEKFLTEQMMERREDVWLPLISYRN
SLVTGGEDDRMSVNSGSSSKTSSVRNKKGRPPLHKKRVEDESLDNTWLNRTDTMIQTPG LPA PQLTST
VLRENSRPMGDQIQEPESEHGSEPDFLHNPQMQISWLGP KLEDLNRKDR TGMNYMKVRTGVRHAVRGLM
EEDAEP IFEDVMMSSRSQLEDMNEEFEDTMVIDLPPSRNRRERAE LRPDFD SAAIIEDDSGFGMPMF
  
```

TRTRPLEQKLISEEDLAANDILDYKDDDDKV

Chromatograms: https://cdn.origene.com/chromatograms/mk6259_a07.zip

Restriction Sites: SgfI-MluI

Cloning Scheme:

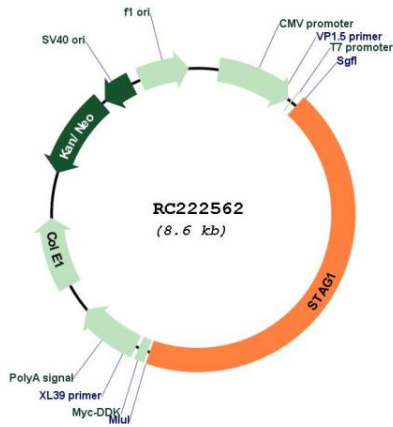


ACCN: NM_005862

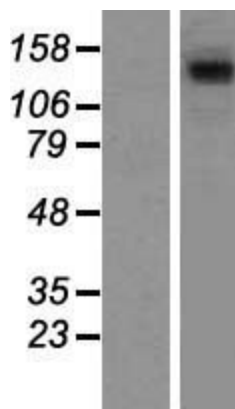
ORF Size: 3774 bp

OTI Disclaimer:	The molecular sequence of this clone aligns with the gene accession number as a point of reference only. However, individual transcript sequences of the same gene can differ through naturally occurring variations (e.g. polymorphisms), each with its own valid existence. This clone is substantially in agreement with the reference, but a complete review of all prevailing variants is recommended prior to use. More info
OTI Annotation:	This clone was engineered to express the complete ORF with an expression tag. Expression varies depending on the nature of the gene.
Components:	The ORF clone is ion-exchange column purified and shipped in a 2D barcoded Matrix tube containing 10ug of transfection-ready, dried plasmid DNA (reconstitute with 100 ul of water).
Reconstitution Method:	<ol style="list-style-type: none">1. Centrifuge at 5,000xg for 5min.2. Carefully open the tube and add 100ul of sterile water to dissolve the DNA.3. Close the tube and incubate for 10 minutes at room temperature.4. Briefly vortex the tube and then do a quick spin (less than 5000xg) to concentrate the liquid at the bottom.5. Store the suspended plasmid at -20°C. The DNA is stable for at least one year from date of shipping when stored at -20°C.
RefSeq:	NM_005862.3
RefSeq Size:	5166 bp
RefSeq ORF:	3777 bp
Locus ID:	10274
UniProt ID:	Q8WVM7
Cytogenetics:	3q22.3
Domains:	STAG
Protein Families:	Druggable Genome
Protein Pathways:	Cell cycle
MW:	144.2 kDa
Gene Summary:	This gene is a member of the SCC3 family and is expressed in the nucleus. It encodes a component of cohesin, a multisubunit protein complex that provides sister chromatid cohesion along the length of a chromosome from DNA replication through prophase and prometaphase, after which it is dissociated in preparation for segregation during anaphase. [provided by RefSeq, Jul 2008]

Product images:



Circular map for RC222562



Western blot validation of overexpression lysate (Cat# [LY417032]) using anti-DDK antibody (Cat# [TA50011-100]). Left: Cell lysates from untransfected HEK293T cells; Right: Cell lysates from HEK293T cells transfected with RC222562 using transfection reagent MegaTran 2.0 (Cat# [TT210002]).