

Product datasheet for **RC222561**

NFIX (NM_002501) Human Tagged ORF Clone

Product data:

Product Type:	Expression Plasmids
Product Name:	NFIX (NM_002501) Human Tagged ORF Clone
Tag:	Myc-DDK
Symbol:	NFIX
Synonyms:	CTF; MRSHSS; NF-I/X; NF1-X; NF1A; SOTOS2
Mammalian Cell Selection:	Neomycin
Vector:	pCMV6-Entry (PS100001)
E. coli Selection:	Kanamycin (25 ug/mL)



[View online »](#)

ORF Nucleotide Sequence:

>RC222561 representing NM_002501
 Red=Cloning site Blue=ORF Green=Tags(s)

TTTTGTAATACGACTCACTATAGGGCGGCCGGAATTCGTCGACTGGATCCGGTACCGAGGAGATCTGCC
 GCC**CGGATCGCC**

ATGTA**CTCCCGTACTGCCTACCCAGGATGAGTTCACCCGTTTCATCGAGGCACTGCTGCCTCAGTCC**
 GCGCTTTCTCCTACACCTGGTTCAACCTGCAGGCGCGGAAGCGCAAGTACTTCAAGAAGCATGAAAAGCG
 GATGTCGAAGGACGAGGAGCGGGCGGTGAAGGACGAGCTGCTGGGCGAGAAGCCCGAGATCAAGCAGAAG
 TGGGCATCCCGGCTGCTGGCCAAGCTGCACAAGGACATCCGGCCCGAGTCCGCGAGGACTTCGTGCTGA
 CCATCACGGGCAAGAAGCCCCCTGCTGCGTGTCTCCAACCCGACCAGAAGGGCAAGTCCGGCGGAT
 TGACTGCCTGCGCCAGGCTGACAAGGTGTGGCGGCTGGACCTGGTTCATGGTGATTTTGTAAAGGGGATC
 CCCCTGGAAGTACTGATGGGGAGCGGCTCTACAAGTCGCTCAGTGTCTGAACCCCGGCTGTGCGTCC
 AGCCACATCACATTGGAGTACAATCAAAGAACTGGATCTTTATCTGGTACTTTGTCCACTCCGGA
 ATCCGGACAATCAGATAGTTCAAACCAGCAAGGAGATGCGGACATCAAACCACTGCCAACGGGCACTTA
 AGTTTCCAGGACTGTTTTGTGACTTCCGGGGTCTGGAATGTGACGGAGCTGGTGAGAGTATCACAGACTC
 CTGTTGCAACAGCATCAGGGCCCAACTTCTCCCTGGCGGACCTGGAGAGTCCCAGCTACTACAACATCAA
 CCAGGTGACCCTGGGCGGGCGTCCATCACCTCCCTCCTTCCACCAGCACCAAGCGCCCAAGTCC
 ATCGATGACAGTGAGATGGAGAGCCCTGTTGATGACGTGTTCTATCCCGGACAGGCCGTTCCCAAGCAG
 CTGGCAGCAGCCAGTCCAGCGGGTGGCCCAACGATGTGGATGCAGGCCCGGCTTCTAAAGAAGTCAAG
 AAAGCTGGACTTCTGCAGTGCCTCTCCTCTCAGGGCAGTCCCGCGCATGGCTTTACCCACCACCCG
 CTGCTGTGCTTGTGGAGTCAAGCAGGAGCCCGGGCCACAGCATCAGCCCTGCACCTCCCTCCA
 CGTCCATCATCCAGCAGTCAAGCCGATTTTACGCACCCGACCATCCGCTACCACCACCACCGGGCA
 GGACTCACTGAAGGAGTTTGTGCAGTTTGTGCTCGGATGGCTCGGGCCAGGCCACCGGACAGCATTTCG
 CAACGACAGGCGCCTCTCTGCCAACCGTGTGTGCTGAGTCCGACCCCGGACGGCAACTTTC

ACGCGTACGCGGCCGCTCGAGCAGAACTCATCTCAGAAGAGGATCTGGCAGCAAATGATATCCTGGATT
 ACAAGGATGACGACGATAAGGTTTAA

Protein Sequence:

>RC222561 representing NM_002501
 Red=Cloning site Green=Tags(s)

MYSPLYCLTQDEFHPFIEALLPHVRAFSTWFLQARKRKYFKKHEKRMSKDEERAVKDELLGEKPEIKQK
 WASRLAKLRKDIRPEFREDFVLTITGKKPPCCVLSNPQKKGKIRRIDCLRQADKVVRLDLVMVILFKGI
 PLESTDGERLYKSPQCSNPGLCVQPHHIGVTIKELDLAYFYVHTPEESQSDSSNQGDADIKPLPNGHL
 SFQDCFVTSVWVNTTELVRVSQTPVATASGPNFSLADLESPPSYNINQVTLGRRSITSPSTSTTKRPKS
 IDSEMESPVDDVFYPGTGRSPAAGSSQSSGWPNDVDAGPASLKKSGKLDKDFCSALSSQSSPRMAFTTHP
 LPVLAGVRPGSPRATASALHFPSTSI IQSSPYFTHTPIRYHHHHGQDSLKEFVQFVCSGSGQATGQHS
 QRQAPPLPTGLSASDPGTATF

TRTRPLEQKLISEEDLAANDILDYKDDDDKV

Chromatograms:

https://cdn.origene.com/chromatograms/mg3362_c05.zip

Restriction Sites:

Sgfl-Mlul

Cloning Scheme:


ACCN: NM_002501

ORF Size: 1323 bp

OTI Disclaimer: The molecular sequence of this clone aligns with the gene accession number as a point of reference only. However, individual transcript sequences of the same gene can differ through naturally occurring variations (e.g. polymorphisms), each with its own valid existence. This clone is substantially in agreement with the reference, but a complete review of all prevailing variants is recommended prior to use. [More info](#)

OTI Annotation: This clone was engineered to express the complete ORF with an expression tag. Expression varies depending on the nature of the gene.

Components: The ORF clone is ion-exchange column purified and shipped in a 2D barcoded Matrix tube containing 10ug of transfection-ready, dried plasmid DNA (reconstitute with 100 ul of water).

Reconstitution Method:

1. Centrifuge at 5,000xg for 5min.
2. Carefully open the tube and add 100ul of sterile water to dissolve the DNA.
3. Close the tube and incubate for 10 minutes at room temperature.
4. Briefly vortex the tube and then do a quick spin (less than 5000xg) to concentrate the liquid at the bottom.
5. Store the suspended plasmid at -20°C. The DNA is stable for at least one year from date of shipping when stored at -20°C.

RefSeq: [NM_002501.4](#)

RefSeq Size: 5576 bp

RefSeq ORF: 1326 bp

Locus ID: 4784

UniProt ID: [Q14938](#)

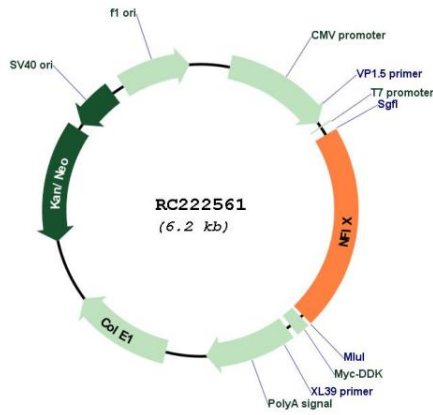
Cytogenetics: 19p13.13

Protein Families: Transcription Factors

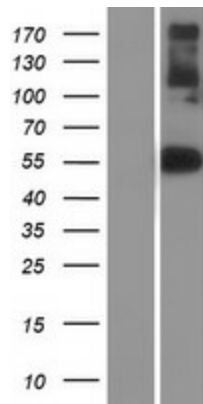
MW: 48.7 kDa

Gene Summary: The protein encoded by this gene is a transcription factor that binds the palindromic sequence 5'-TTGGCNNNNNGCCAA-3 in viral and cellular promoters. The encoded protein can also stimulate adenovirus replication in vitro. Three transcript variants encoding different isoforms have been found for this gene. [provided by RefSeq, Aug 2012]

Product images:



Circular map for RC222561



Western blot validation of overexpression lysate (Cat# [LY419287]) using anti-DDK antibody (Cat# [TA50011-100]). Left: Cell lysates from untransfected HEK293T cells; Right: Cell lysates from HEK293T cells transfected with RC222561 using transfection reagent MegaTran 2.0 (Cat# [TT210002]).