

Product datasheet for **RC222559**

CCNK (NM_001099402) Human Tagged ORF Clone

Product data:

Product Type:	Expression Plasmids
Product Name:	CCNK (NM_001099402) Human Tagged ORF Clone
Tag:	Myc-DDK
Symbol:	CCNK
Synonyms:	CPR4; IDDHDF
Mammalian Cell Selection:	Neomycin
Vector:	pCMV6-Entry (PS100001)
E. coli Selection:	Kanamycin (25 ug/mL)



[View online »](#)

ORF Nucleotide Sequence:

>RC222559 representing NM_001099402
 Red=Cloning site Blue=ORF Green=Tags(s)

TTTTGTAATACGACTCACTATAGGGCGGCCGGAATTCGTCGACTGGATCCGGTACCGAGGAGATCTGCC
 GCC**CGGATCGCC**

ATGAAGGAGAATAAAGAAAATTCAAGCCCTTCAGTAACTTCAGCAAACCTGGACCACACAAGCCATGTT
 GGTACTGGGATAAGAAAGACTTGGCTCATACCCCTCACAACCTGAAGGACTTGATCCAGCCACCGAGGC
 CCGGTACCGCCGAGAGGGCGCTCGTTTCATCTTTGATGTGGGCACACGTTTGGGGCTACACTATGATACC
 CTGGCAACTGGAATAATTTATTTTCATCGCTTCTATATGTTTCATTCTTCAAGCAATCCCAAGATATG
 TGACAGGAGCCTGTTGCCTCTTTCTGGCTGGGAAAGTAGAAGAAACACCAAAAAATGTAAGATATCAT
 CAAAACAGCTCGTAGTTTATTAATGATGTACAATTTGGCCAGTTTGGAGATGACCCAAAGGAGGAAGTA
 ATGTTTCTGGAGAGAATCTTACTGCAGACCATCAAGTTTGATTTACAGGTAGAACATCCATACCAGTTCC
 TACTAAAATATGCAAAGCAACTCAAAGGTGATAAAAAACAAAATTCAAAAGTTGGTTCAAATGGCATGGAC
 ATTTGTAATGACAGTCTCTGCACCACCTTGCTACTGCAGTGGGAACCAGAGATCATAGCAGTAGCAGTG
 ATGTATCTCGCAGGACGTTTGTGCAAATTTGAAATACAAGAATGGACCTCAAACCCATGTATAGGAGAT
 GGTGGGAGCAGTTTGTCAAGATGTCCCGGTCGACGTTTGTGAAGACATCTGCCACCAATCCTGGATCT
 TTACTCACAAGGAAAACAACAGATGCCTCATCACACCCCCATCAGCTGCAACAGCCCCATCTCTTCAG
 CCTACACCACAAGTGCCGCAAGTACAGCAGTCACAGCCGCTCAAAGCTCCGAACCATCCAGCCCCAGC
 AGAAGGACCCCCAGCAACCAGCCAGCAGCAGCAGCCAGCCCAACAGCCCAAGAAACCTCTCCGACGC
 CAGTTCTCCCGACAGGTTAAGCGAGCCGTGGTTGTTTCTCCAAAGAAGAGAACAAGCAGCAGAACCA
 CCACCACCTAAAATCCCCAAAATTGAGACCACTCATCCACCGTTGCCTCCAGCCACCCACCTCCAGACC
 GGAAGCCCTCCCTCGCTGCTGCCTTAGGTGAGGCTGAGCCGCGGGCCCTGTGGATGCCACTGACCTCCC
 CAAAGTCCAGATTCCCCCTCCGGCCACCCGCCCCCTGTGCACCAGCCACCGCCGCTGCCACACCGCCCC
 CCGCCCCACCCCTCCAGCTACATGACCGGGATGTCCACCACCAGCTCCTACATGTCTGGAGAGGGCT
 ACCAGAGCCTGCAGTCCATGATGAAGACCGAGGGACCCTCTACGGTGCCTGCCCCCGCCTACGGCCC
 ACCTGCACACCTGCCCTACCACCCCATGTCTACCCGCCAACCCGCCCCCGCCACCTGTGCCTCTCCC
 CCAGCCTCTTCCCCCACCTGCCATCCACCCCTACTCTGGCTACCCCCACCCCAACCCACCTACA
 ACCCAACTTCCACCCCAACCCACGCCTCCCGCTACCCACGCAGTCCCCCTCATCTCTCCAGG
 GTTGGGCTGCCGCCAGCCAGCTACCCACCTCCTGCCGTCCTCCCTGGAGGACAGCTCCTGTGCCCCG
 CCCATTCCCCACCCGGCATGCCTCCAGTTGGGGGCTGGGGCGGCAGCCTGGATGAGA

ACGCGTACGCGGCCGCTCGAGCAGAAACTCATCTCAGAAGAGGATCTGGCAGCAAATGATATCCTGGATT
 ACAAGGATGACGACGATAAGGTTTAA

Protein Sequence:

>RC222559 representing NM_001099402
 Red=Cloning site Green=Tags(s)

MKENKENS SVTSANLDHTKPCWYWDKKDLAHTPSQLEGLDPATEARYRREGARFIFDVGTRLGLHYDT
 LATGIIYFHRFYMFHSFKQFPRYVTGACCLFLAGKVEETPKKCKDIKTAARSLNDVQFGQFGDDPKKEE
 MVLERILLQTIKFDLQVEHPYQFLLKYAKQLKGDKNKIQLVQMAWTFVNDLCTTSLQWEPEIIAVAV
 MYLAGRLCKFEIQEWTSPMYRRWWEQFVQDVPVDVLEDIHQILDLYSQGKQMPHHTPHLQPPSLQ
 PTPQVPVQVQSQPSQSSEPSQPQQKDPQQAQQQPAQQPKKPSQPSSPRQVKRAVVVSPKEENKAAEP
 PPPKIPKIEETHPPLPPAHPDRKPLAAALGAEPPGPVADTDLPKVQIPPAHPAPVHQPPLPHRP
 PPSPPSSYMTGMSTTSSYMSGEGYQSLQSMKTEGPSYGALPPAYGPPAHLPYHHPHYPPNPPPPVPPP
 PASFPPPAIPPPYPGYPPTYNPNFPPPPRPLPPTHAVPPHPPGLGLPPASYPVPPVPPGQPPVPP
 PIPPPGMPVGGGLGRAAWMR

TRTRPLEQKLISEEDLAANDILDYKDDDDKV

Chromatograms:

https://cdn.origene.com/chromatograms/mg3631_h04.zip

Restriction Sites:

Sgfl-Mlul

Cloning Scheme:


ACCN: NM_001099402

ORF Size: 1740 bp

OTI Disclaimer: Due to the inherent nature of this plasmid, standard methods to replicate additional amounts of DNA in E. coli are highly likely to result in mutations and/or rearrangements. Therefore, OriGene does not guarantee the capability to replicate this plasmid DNA. Additional amounts of DNA can be purchased from OriGene with batch-specific, full-sequence verification at a reduced cost. Please contact our customer care team at custsupport@origene.com or by calling 301.340.3188 option 3 for pricing and delivery.

The molecular sequence of this clone aligns with the gene accession number as a point of reference only. However, individual transcript sequences of the same gene can differ through naturally occurring variations (e.g. polymorphisms), each with its own valid existence. This clone is substantially in agreement with the reference, but a complete review of all prevailing variants is recommended prior to use. [More info](#)

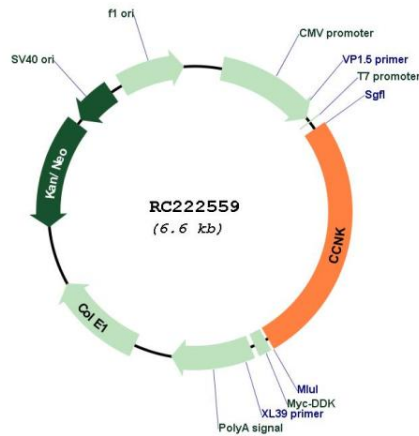
OTI Annotation: This clone was engineered to express the complete ORF with an expression tag. Expression varies depending on the nature of the gene.

Components: The ORF clone is ion-exchange column purified and shipped in a 2D barcoded Matrix tube containing 10ug of transfection-ready, dried plasmid DNA (reconstitute with 100 ul of water).

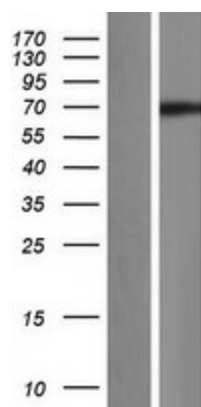
- Reconstitution Method:**
1. Centrifuge at 5,000xg for 5min.
 2. Carefully open the tube and add 100ul of sterile water to dissolve the DNA.
 3. Close the tube and incubate for 10 minutes at room temperature.
 4. Briefly vortex the tube and then do a quick spin (less than 5000xg) to concentrate the liquid at the bottom.
 5. Store the suspended plasmid at -20°C. The DNA is stable for at least one year from date of shipping when stored at -20°C.

Note:	Plasmids are not sterile. For experiments where strict sterility is required, filtration with 0.22um filter is required.
RefSeq:	NM_001099402.2
RefSeq Size:	2618 bp
RefSeq ORF:	1743 bp
Locus ID:	8812
UniProt ID:	O75909
Cytogenetics:	14q32.2
Protein Families:	Druggable Genome, Transcription Factors
MW:	64.1 kDa
Gene Summary:	The protein encoded by this gene is a member of the transcription cyclin family. These cyclins may regulate transcription through their association with and activation of cyclin-dependent kinases (CDK) that phosphorylate the C-terminal domain (CTD) of the large subunit of RNA polymerase II. This gene product may play a dual role in regulating CDK and RNA polymerase II activities. [provided by RefSeq, Jul 2008]

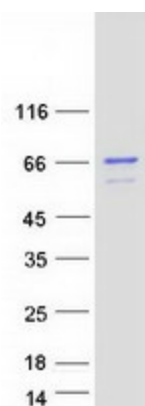
Product images:



Circular map for RC222559



Western blot validation of overexpression lysate (Cat# [LY420439]) using anti-DDK antibody (Cat# [TA50011-100]). Left: Cell lysates from untransfected HEK293T cells; Right: Cell lysates from HEK293T cells transfected with RC222559 using transfection reagent MegaTran 2.0 (Cat# [TT210002]).



Coomassie blue staining of purified CCNK protein (Cat# [TP322559]). The protein was produced from HEK293T cells transfected with CCNK cDNA clone (Cat# RC222559) using MegaTran 2.0 (Cat# [TT210002]).