

## Product datasheet for **RC222547**

### Keratin 39 (KRT39) (NM\_213656) Human Tagged ORF Clone

#### Product data:

Product Type:	Expression Plasmids
Product Name:	Keratin 39 (KRT39) (NM_213656) Human Tagged ORF Clone
Tag:	Myc-DDK
Symbol:	Keratin 39
Synonyms:	CK-39; K39; KA35
Mammalian Cell Selection:	Neomycin
Vector:	pCMV6-Entry (PS100001)
E. coli Selection:	Kanamycin (25 ug/mL)



[View online »](#)

**ORF Nucleotide Sequence:**

>RC222547 representing NM\_213656  
 Red=Cloning site Blue=ORF Green=Tags(s)

TTTTGTAATACGACTCACTATAGGGCGGCCGGAATTCGTCGACTGGATCCGGTACCGAGGAGATCTGCC  
 GCC**CGCATCGCC**

ATGGACACCAAGGGCTGTACAACAACCAATTCTCCTTCAACCCCATGTCAAACCTGCTCTAGGATTACAA  
 ATGTTAGTACCATCTCTTCTAACACGGCTGCCATCCTGGTGGCCTTACAGTCAACAACCTGTCAACCAGC  
 TGGCCACGTTCTCAGAATTCCTGGGACCAGGGCTGCCAACCCACTCCTCGCTTTTGTGCGCAAGCCATC  
 TACCTAATGAACAACCTCAATGCCCGTTTTTCTCTGGATGACTGCAGCTGGTATGGTGAAGGCATCAACA  
 GTAATGAGAAGGAGACCATGCAAACTTGAACGAGCGCCTTGCTAACTACCTGCAAAAGGTGCGAATGCT  
 AGAACGAGAGAATGCTGAACTGGAATCTAAAATCCAGGAAGAAAGTAACAAGAGCTCCCTGTTCTATGT  
 CCTGATTACCTGTCTTACTACACTACCATTGAGGAGCTCCAGCAGAAGATCTTGTGTACCAAGGCCGAGA  
 ATTCAGACTGGTCTCGCAAATGACAACACCAAACTGACTGCAGATGACTTGAGAGCCAAATACGAAGC  
 TGAGGTGTCTCTACGCCAGCTGGTAGAGTCAGATGCCAATGGCCTCAAGCAGATCCTGAATGTGCTGACC  
 CTGGGCAAGGCCGACCTAGAGGCCAAGTCCAGTCTCTGAAAGAGGAGCTCCTTTGCCTCAAGAACAACC  
 ACAAGAGGAAATCAATTCTTTACAGTGTGAGCTTGGGGAGAGACTTGACATTGAAGTACTGCTGCCCC  
 TTCTGCTGACCTAAACCAGGTTCTACAAGAAATGAGATGTCAATATGAGCCCATCATGGAGACAAACCGC  
 AAAGATGTGGAACAGTGGTTCAACACGCAGATAGAGGAGCTGAATCAACAAGTGGTGACCAGCTCTCAAC  
 AGCAGCAATGCTGCCAAAAGGAGATCATAGAAGTGAAGCAGTGTGAACACTCTGGAGGTTGAACTGCA  
 GGCCACGATCGAATGAGAGATCCCAAGAGTGCATCCTAACGGAGACAGAGGCTCGCTACACGGCCTTG  
 CTGACCCAGATCCAGAGTCTGATTGATAACCTGGAAGCTCAGCTGGCAGAGATCCGGTGTGCCCTGGAAA  
 GACAGAACCAAGAATACGAGATCCTGCTGGAGTCAAGTCCCGGCTGGAATGTGAGATACCACATACCG  
 CAGCCTTCTGGAGAGCTCGGATGGCAAGCGTCCCTGTTACCCACGTGCCACCAAATGTGAGCCTTCCCCT  
 TGGACATCTTGTAAAGTCCGGAGCCATAGAAAGCACGGCCCCAGCTTGACATCCTCATCCCCCTGACGT  
 TAAAGGAGCACTGCAGTGCCTGCGGACCCTGTCCCGGATACTGGTTAAAATTTGCACCATACCAAGGA  
 GATTAAGGATGGGAAGGTCATTTCTTACGAGCATGTGCAGCCTGTTTCATCATCAGACCTGCCAAA  
 GTC

**ACGCGT**ACGCGGCCGCTCGAGCAGAAACTCATCTCAGAAGAGGATCTGGCAGCAAATGATATCCTGGATT  
 ACAAGGATGACGACGATAAGGTTTAA

**Protein Sequence:**

>RC222547 representing NM\_213656  
 Red=Cloning site Green=Tags(s)

MDTKGCTTTNSPSTPCQNCSTRITNVSTISSNNGCHPGGLTVNNCQPAGHVLRIPWDQGCQPTPRFCRKPI  
 YLMNFNARFSLDDCSWYGEINSNEKETMQILNERLANYLQKVRMLERENAELESKIQEESNKELPVLC  
 PDYLSYTTIEELQKILCTKAENSRLVSQIDNTKLTADDLRKYEAEVSLRQLVESDANGLKQILNVL  
 LGKADLEAQVQSLKEELLCLKNNHKEEINSLQCQLGERLDIEVTAAPSADLNQVLQEMRCQYEPIMETNR  
 KDVEQWFNTQIEELNQQVVTSSQQQCCQKEIIELRVNTLEVELQAQHRMRDSQECILTETEARYTAL  
 LTQIQSLIDNLEAQLAEIRCALERQNEYEILLDVKSRLICEITTYRSLLESSDGKRPCYPRATKCEPSP  
 WTSCKSGAIESTAPACTSSSPCSLKEHCSACGPLSRILVKICTITKEIKDGKVISSYEHVQPCFIIRPAK  
 V

**TRTRPLEQKLI**SEEDLAANDILDYKDDDDKV

**Chromatograms:**

[https://cdn.origene.com/chromatograms/mk8040\\_c11.zip](https://cdn.origene.com/chromatograms/mk8040_c11.zip)

**Restriction Sites:**

Sgfl-Mlul

**Cloning Scheme:**


**ACCN:** NM\_213656

**ORF Size:** 1473 bp

**OTI Disclaimer:** The molecular sequence of this clone aligns with the gene accession number as a point of reference only. However, individual transcript sequences of the same gene can differ through naturally occurring variations (e.g. polymorphisms), each with its own valid existence. This clone is substantially in agreement with the reference, but a complete review of all prevailing variants is recommended prior to use. [More info](#)

**OTI Annotation:** This clone was engineered to express the complete ORF with an expression tag. Expression varies depending on the nature of the gene.

**Components:** The ORF clone is ion-exchange column purified and shipped in a 2D barcoded Matrix tube containing 10ug of transfection-ready, dried plasmid DNA (reconstitute with 100 ul of water).

- Reconstitution Method:**
1. Centrifuge at 5,000xg for 5min.
  2. Carefully open the tube and add 100ul of sterile water to dissolve the DNA.
  3. Close the tube and incubate for 10 minutes at room temperature.
  4. Briefly vortex the tube and then do a quick spin (less than 5000xg) to concentrate the liquid at the bottom.
  5. Store the suspended plasmid at -20°C. The DNA is stable for at least one year from date of shipping when stored at -20°C.

**RefSeq:** [NM\\_213656.4](#)

**RefSeq Size:** 1696 bp

**RefSeq ORF:** 1476 bp

**Locus ID:** 390792

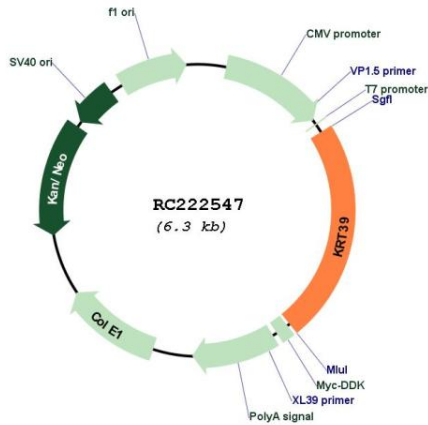
**UniProt ID:** [Q6A163](#)

**Cytogenetics:** 17q21.2

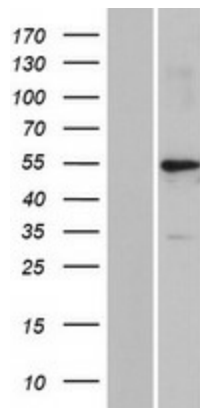
**MW:** 55.5 kDa

**Gene Summary:** This gene encodes a member of the type I (acidic) keratin family, which belongs to the superfamily of intermediate filament (IF) proteins. Keratins are heteropolymeric structural proteins which form the intermediate filament. These filaments, along with actin microfilaments and microtubules, compose the cytoskeleton of epithelial cells. The type I keratin genes are clustered in a region of chromosome 17q12-q21. [provided by RefSeq, Jul 2009]

**Product images:**



Circular map for RC222547



Western blot validation of overexpression lysate (Cat# [LY403734]) using anti-DDK antibody (Cat# [TA50011-100]). Left: Cell lysates from untransfected HEK293T cells; Right: Cell lysates from HEK293T cells transfected with RC222547 using transfection reagent MegaTran 2.0 (Cat# [TT210002]).