

Product datasheet for **RC222544**

Neuroigin 2 (NLGN2) (NM_020795) Human Tagged ORF Clone

Product data:

Product Type:	Expression Plasmids
Product Name:	Neuroigin 2 (NLGN2) (NM_020795) Human Tagged ORF Clone
Tag:	Myc-DDK
Symbol:	Neuroigin 2
Mammalian Cell Selection:	Neomycin
Vector:	pCMV6-Entry (PS100001)
E. coli Selection:	Kanamycin (25 ug/mL)



[View online »](#)

ORF Nucleotide Sequence:

>RC222544 representing NM_020795
 Red=Cloning site Blue=ORF Green=Tags(s)

CTATAGGGCGGCCGGAATTCGTCTGACTGGATCCGGTACCGAGGAGATCTGCC
 GCC**CGGATCGCC**

ATGTGGCTCCTGGCGCTGTGTCTGGTGGGGCTGGCGGGGCTCAACGCGGGGAGGGGTCCCGCGGCG
 GCGCCCCGGGCGGCCCGGCTGGGCTCGGCAGCCTCGGCGAGGAGCGCTTCCCGTGGTGAACACGGC
 CTACGGGCGAGTGCCTGGTGTGGCGCGGAGCTCAACAACGAGATCCTGGGCCCGTCTGCAGTCTTG
 GGCGTGCCCTACGCCACGCCGCCCTGGGCGCCGCGCTTCCAGCCGCTGAGGCGCCCGCTCGTGCC
 CCGGGTGCACGCAACGCCACCACCCTGCCGCCGCTGCCGCGAGAACCTGCACGGGGCGCTGCCGCCAT
 CATGCTGCCTGTGTGGTTCACCGACAACCTGGAGGCGGCCACCTACGTGCAGAACAGAGCGAGGAC
 TGCTGTACCTCAACCTACGTGCCACCGAGGACGGTCCGCTCACAAAAACGTGACGAGGCGACGC
 TCAATCCGCCAGACAGATATCCGTGACCTGGGAAGAAGCCTGTGATGCTGTTTCCATGGCGGCTC
 CTACATGGAGGGACCGAAACATGTTTCGATGGCTCAGTCTGGTGCCTATGGCAACGTATTGTAGCC
 ACGCTCAACTACGTCTTGGGGTCTCGGTTTTCTCAGCACCGGGGACCGAGCTGCAAAAGGCAACTATG
 GGCTCCTGGACCAGATCCAGGCCCTGCGTGGCTCAGTAAAAACATCGCCCACTTTGGGGGCGACCCGA
 GCGTATACCATCTTTGGTTCGGGGCAGGGGCTCCTGCGTCAACCTTCTGATCCTCTCCACCATTTCA
 GAAGGGCTGTTCCAGAAGGCCATCGCCAGAGTGGCACCGCCATTTCCAGCTGGTCTGTCAACTACCAGC
 CGCTCAAGTACACGCGGCTGTGGCAGCAAGTGGGCTGTGACCGAGAGGACAGCGCTGAAGCTGTGGA
 GTGTCTGCGCCGAAGCCCTCCCGGAGCTGGTGGACAGGACGTGCAGCCTGCCGCTACCACATCGCC
 TTTGGGCCGTGGTGGATGGCGACGTGGTCCCGATGACCTGAGATCCTCATGCAGCAGGGAGAATTCC
 TCAACTACGACATGCTCATCGGCTCAACCAGGAGAGGGCCTCAAGTTCGTGGAGGACTGCGAGAG
 CGAGGACGGTGTCTGCGCAGCGCTTTGACTTCACTGTCTCAACTTTGTGGACAACCTGTATGGCTAC
 CCGGAAGGCAAGGATGTGCTTCGGGAGACCATCAAGTTTATGTACACAGACTGGGCGACCGGGACAATG
 GCGAAATGCGCCGCAAAACCCTGCTGGCGCTCTTACTGACCACCAATGGGTGGCACCAGCTGTGGCCAC
 TGCCAAGCTGCACGCCGACTACCAGTCTCCCGTCTACTTTACACCTTCTACCACCCTGCCAGGCGGAG
 GGCCGGCTGAGTGGCAGATGCGGCGCACGGGATGAACTGCCCTATGTCTTTGGCGTGCCATGGTGG
 GTGCCACCACCTTCCCTGTAACCTTCCAAGAATGACGTGCTGCTCAGTCCGCTGGTGTGACCTA
 CTGGACCAACTTCGCAAGACTGGGACCCCAACCAGCCGGTCCCGCAGGATACCAAGTTCATCCACACC
 AAGCCCAATCGCTTCGAGGAGTGGTGTGGAGCAAATTAACAGCAAGGAGAAGCAGTATCTGCACATAG
 GCCTGAAGCCACGCGTGGTGCACACTACCGCCCAACAAGTGGCCTTCTGGCTGGAGCTCGTGCCCA
 CCTGCACAACCTGCACACGGAGCTTTCACCACCACACGCGCCTGCCTCCCTACGCCACGCGCTGGCCG
 CCTCGTCCCCCGCTGGCGCCCCGGGCACACGCCGGCCCCCGCCGCTGCCACCCTGCCTCCCGAGCCCG
 AGCCCCGAGCCCGCCCAAGGGCTATGACCGCTTCCCCGGGACTCACGGGACTACTCCACGGAGCTGAG
 CGTACCGTGGCCGTGGTGCCTCCCTCCTTCTCAACATCCTGGCCTTTGCTGCCCTTACTACAAG
 CGGGACCGGCGGAGGAGCTGCGGTGCAGGCGGCTTAGCCACCTGGCGGCTCAGGCTCTGGCGTGCCTG
 GTGGGGCCCCCTGCTCCCCCGCGGGCCGTGAGCTGCCACCAGAGGAGGAGCTGGTGTCACTGCAGCT
 GAAGCGGGTGGTGGCGTCCGGGCGGACCCTGCCGAGGCTTGGCCCTGCCTGCCCGCCGACTACACC
 CTGGCCCTGCGCCGGGACCGGACGATGTGCTCTCTTGGCCCCGGGGCCTGACCTGTCTGCCAGTG
 GCCTGGGGCCACCGCACCCCCACGCCCCCTCCCTTATCCCTTGGGGCCCTTCCCCCGCCCCCTCC
 CACCGCCACCAGCCACAACAACACGCTACCCACCCCACTCCACCCTCGGGTA

**CTCGAGCAGAACTCATCTCTGAAGAGGATCTGGCAGCAAATGATATCCTGGATTACAAGGATGACGACG
 ATAAGGTTTAA**

Protein Sequence: >RC222544 representing NM_020795
 Red=Cloning site Green=Tags(s)

```

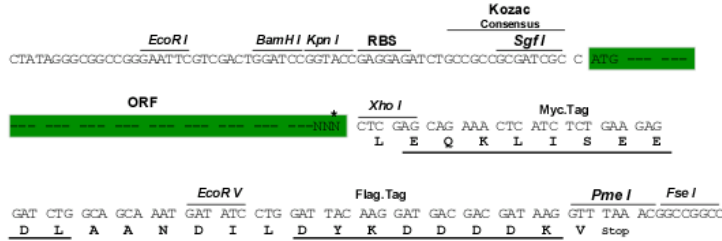
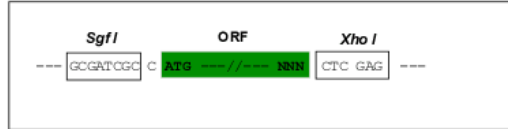
MWLLALCLVGLAGAQRGGGGPGGGAPGGPGLGLGSLGEERFPVVNTAYGRVGRVRELNNEILGPVVQFL
GVPYATPPLGARRFQPPEAPASWPGVRNATLPPACQNLHGALPAIMLPVWFTDNLEAAATYVQNQSED
CLYLNLYVPTEDGPLTKKRDEATLNPPDIDIRDPGKKPVMLFLHGGSYMEGTGNMFDGSVLAAYGNVIVA
TLNRYRLGVLGFLSTGDQAAKGNYGLLDQIQALRWLSENI AHFGGDPERITIFGSGAGASCVNLLILSHHS
EGLFQKAI AQSGTAISSWSVNYQPLKYTRLLAAKVGCDREDSAEAVECLRRKPSRELVDQDVQPARYHIA
FGPVVDGDVVPDDPEILMQQGEFLNYDMLIGVNQGEGLKFVEDSAESEDGVSASAFDFTVSNFVDNLYGY
PEGKDVLRETIKFMYTDWADRDNGEMRRKTLALFTDHQWVAPAVATAKLHADYQSPVYFYTFYHHCQAE
GRPEWADAAHGDEL PYVFGVPMVGATDLFPCNFSKNDVML SAVVMTYWTNFAKTGDPNQVPVQDTKFIHT
KPNRFEEVWVSKFNSKEKQYLHIGLKPRVRDNYRANKVAFWLELVPHLHNLHTELF TTTTTRLPYATRWP
PRPPAGAPGTRRPPPPATLPPEPEPEPGPRAYDRFPGDSRDIYSTE SVTVAVGASLLFLNLAFAALYYK
RDRRQELRCRRLSPPGGSGSGVPGGGPLLPAAGREL PPEEELVSLQLKGGG V GADPAEALRPACPPDYT
LALRRAPDDVPLLAPGALTLLPSGLGPPPPPPPSLHPFGPFP P P P P TATSHNNTLPHPHSTTRV
  
```

LEQKLI SEEDLAANDILDYKDDDDKV

Restriction Sites: Sgfl-XhoI

Cloning Scheme:

Cloning sites used for ORF Shuttling:

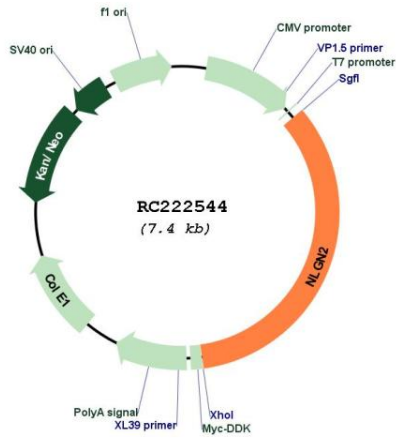


* The last codon before the Stop codon of the ORF

ACCN: NM_020795
ORF Size: 2505 bp

OTI Disclaimer:	<p>Due to the inherent nature of this plasmid, standard methods to replicate additional amounts of DNA in E. coli are highly likely to result in mutations and/or rearrangements. Therefore, OriGene does not guarantee the capability to replicate this plasmid DNA. Additional amounts of DNA can be purchased from OriGene with batch-specific, full-sequence verification at a reduced cost. Please contact our customer care team at custsupport@origene.com or by calling 301.340.3188 option 3 for pricing and delivery.</p> <p>The molecular sequence of this clone aligns with the gene accession number as a point of reference only. However, individual transcript sequences of the same gene can differ through naturally occurring variations (e.g. polymorphisms), each with its own valid existence. This clone is substantially in agreement with the reference, but a complete review of all prevailing variants is recommended prior to use. More info</p>
OTI Annotation:	This clone was engineered to express the complete ORF with an expression tag. Expression varies depending on the nature of the gene.
Components:	The ORF clone is ion-exchange column purified and shipped in a 2D barcoded Matrix tube containing 10ug of transfection-ready, dried plasmid DNA (reconstitute with 100 ul of water).
Reconstitution Method:	<ol style="list-style-type: none"> 1. Centrifuge at 5,000xg for 5min. 2. Carefully open the tube and add 100ul of sterile water to dissolve the DNA. 3. Close the tube and incubate for 10 minutes at room temperature. 4. Briefly vortex the tube and then do a quick spin (less than 5000xg) to concentrate the liquid at the bottom. 5. Store the suspended plasmid at -20°C. The DNA is stable for at least one year from date of shipping when stored at -20°C.
RefSeq:	NM_020795.4
RefSeq Size:	4642 bp
RefSeq ORF:	2508 bp
Locus ID:	57555
UniProt ID:	Q8NFZ4
Cytogenetics:	17p13.1
Protein Families:	Druggable Genome, Transmembrane
Protein Pathways:	Cell adhesion molecules (CAMs)
MW:	90.6 kDa
Gene Summary:	This gene encodes a member of a family of neuronal cell surface proteins. Members of this family may act as splice site-specific ligands for beta-neurexins and may be involved in the formation and remodeling of central nervous system synapses. [provided by RefSeq, Jul 2008]

Product images:



Circular map for RC222544