

Product datasheet for **RC222531**

Choline Acetyltransferase (CHAT) (NM_020549) Human Tagged ORF Clone

Product data:

Product Type:	Expression Plasmids
Product Name:	Choline Acetyltransferase (CHAT) (NM_020549) Human Tagged ORF Clone
Tag:	Myc-DDK
Symbol:	Choline Acetyltransferase
Synonyms:	CHOACTASE; CMS1A; CMS1A2; CMS6
Mammalian Cell Selection:	Neomycin
Vector:	pCMV6-Entry (PS100001)
E. coli Selection:	Kanamycin (25 ug/mL)



[View online »](#)

ORF Nucleotide Sequence:

>RC222531 representing NM_020549
 Red=Cloning site Blue=ORF Green=Tags(s)

TTTTGTAATACGACTCACTATAGGGCGGCCGGGAATTCGTCGACTGGATCCGGTACCGAGGAGATCTGCC
 GCC**CGGATCGCC**

ATGGGGCTGAGGACAGCGAAGAAGAGGGGGCTTGGGGAGGGGGAAATGGAAGAGAGAGGAGGGAGGAG
 GTACAAGAGGAAGGAGAGAAGTGCGCCAGCTTGCCTTCTCCAGTCGGGTGGCCGCGGGACCCGGGCGA
 CGTCGGAGGCCCTGCCGGAAACCCAGGCTGCAGCCCCACCCCGCGCTGCGACACGCCCCCACCCCTT
 CCGGCTCACACCCCGCCACACTCCTGAGTGGTGCAGCGTCGGCCGAGGCGAGCAGAGCCGAGGA
 GAGCAGGTCCACACCTCTGCATCCCTGCACCAGGACTACCAAGACGCCATCCTGGAAAAGGTCCCCCG
 TAAGATGGCAGCAAAAATCCCAGCAGTGAGGAGTCTGGGCTGCCCAAATGCCCGTCCCCCGTGCAG
 CAGACCTGGCCAGTACCTGCAGTGCATGCGACACTTGGTGTCTGAGGAGCAGTTCAGGAAGAGCCAGG
 CCATTGTGCAGCAGTTTGGGGCCCTGGTGGCCTCGGCGAGACCTGCAGCAGAACTCCTGGAGCGGCA
 GGAGAAGACAGCCAACTGGGTGTCTGAGTACTGGCTGAATGACATGTATCTCAACAACCGCTGGCCCTG
 CCTGTCAACTCCAGCCCTGCCGTGATCTTTGCTCGGCAGCACTTCCCTGGCACCGATGACCAGCTGAGGT
 TTGCAGCCAGCCTCATCTCTGGTGTACTCAGCTACAAGGCCCTGCTGGACAGCCACTCCATTCCTACTGA
 CTGTGCCAAAAGGCCAGCTGTGAGGGCAGCCCTTTGCATGAAGCAATACTATGGGCTCTTCTCCTCTAC
 CGGCTCCCCGGCCATACCCAGGACACGCTGGTGGCTCAGAACAGCAGCATCATGCCGGAGCCTGAGCAGC
 TCATCGTAGCCTGCTGCAATCAGTTCTTTGCTTGGATGTTGTCATTAATTTCCGCCGTCTCAGTGAGGG
 GGATCTGTTCACTCAGTTGAGAAAGATAGTCAAATGGCTTCAAACGAGGACGAGCGTTTGCCTCCAATT
 GGCCTGCTGACGTCTGACGGGAGGAGCGAGTGGCCGAGGCCAGGACGGTCTCGTGAAGACTCCACCA
 ACCGGACTCGCTGGACATGATTGAGCGTGCATCTGCCTTGTATGCCTGGACGCGCCAGGAGCGTGGGA
 GCTCAGCGACACCCACAGGGCACTCCAGCTCCTTACGGCGGAGGCTACAGCAAGAACGGGGCAATCGC
 TGGTACGACAAGTCCCTGCAATTTGGTGGGCCGAGACGGCACCTGCGGTGTGGTGTGCGAACACTCCC
 CATTGATGGCATCGTCTGGTGCAGTGCAGTGCATCTGCTCAAGCACATGACGCAGAGCAGCAGGAA
 GCTGATCCGAGCAGACTCCGTCAGCGAGCTCCCCGCCCGGAGGCTGCGGTGGAATGCTCCCCGAA
 ATTCAAGGCCACTTAGCCTCCTCGGCAGAAAACTTCAACGAATAGTAAAGAACCTTGACTTCATTGTCT
 ATAAGTTTGACAACTATGGGAAAACATTCAATTAAGAAGCAGAAATGCAGCCCTGATGCCTTCATCCAGT
 GGCCCTCCAGCTGGCCTTCTACAGGCTCCATCGAAGACTGGTGGCCACCTACGAGAGCGGTCCATCCGC
 CGATTCCAGGAGGACGCGTGGACAACATCAGATCGGCCACTCCAGAGGCACTGGCTTTTGTGAGAGCCG
 TGAATGACCACAAGGCTGCTGTGCCAGCTTCTGAGAAGCTTCTGCTCCTGAAGGATGCCATCCGTGCCCA
 GACTGCATACACAGTGCATGGCCATAACAGGGATGGCCATTGACAACCACCTGCTGGCACTGCGGGAGCTG
 GCCCGGGCCATGTGCAAGGAGCTGCCCGAGATGTTTGCATGGATGAAACCTACCTGATGAGCAACCGTTTG
 TCCTCTCCACTAGCCAGGTGCCACAACCAGGAGATGTTCTGCTGCTATGGTCTGTGGTCCCAATGG
 GTATGGTGCCTGCTACAACCCAGCCAGAGACCATCCTTTTCTGCATCTCTAGCTTTCACAGCTGCAAA
 GAGACTTCTTCTAGCAAGTTTGCAAAAGCTGTGGAAGAAAGCCTCATTGACATGAGAGACCTCTGCAGTC
 TGCTCGCCCTACTGAGAGCAAGCCATTGGCAACAAAGGAAAAAGCCACGAGGCCAGCCAGGGACACCA
 ACCT

AGCGGACCGACGCGTACGCGGCCGCTCGAGCAGAACTCATCTCAGAAGAGGATCTGGCAGCAAATGATATCC
 TGGATTACAAGGATGACGACGATAAGGTTTAA

Protein Sequence: >RC222531 representing NM_020549
Red=Cloning site Green=Tags(s)

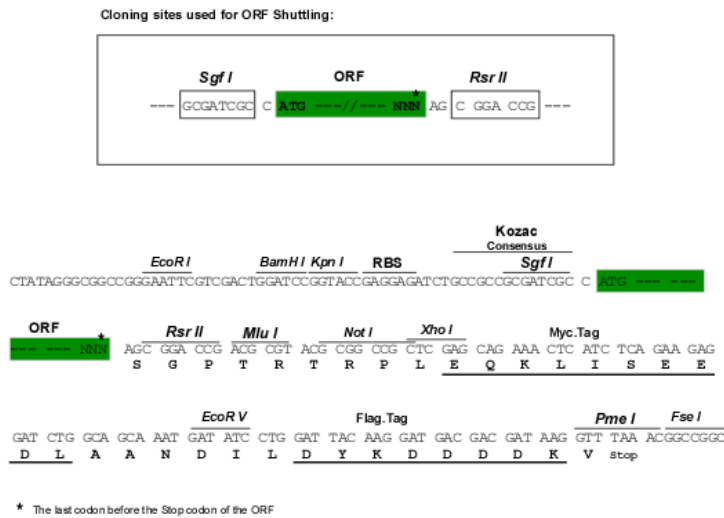
```
MGLRTAKKRGLGGGGKWKREEGGTRGRREVRPACFLQSGGRGDPGDVGGPAGNPGCSPHPRAATRPPPL
PAHTPAHTPEWCGAASAEAAEPRRAGPHLCIPAPGLTKTPILEKVPRKMAAKTPSSEESGLPKLPVPLQ
QTLATYLQCMRHLVSEEQFRKSQAIVQQFGAPGGLGETLQQKLLERQEKTANWVSEYWLNDMYLNNRLAL
PVNSSPAVIFARQHFPGTDDQLRFAASLISGVL SYKALLDSHSIPTDCAKGQLSGQPLCMKQYYGLFSSY
RLPGHTQDTLVAQNSSIMPEPEHVIVACCNQFFVLDVVINFRRLSEGDLFTQLRKIVKMASNEDERLPPI
GLLTSDGRSEWAEARTVLVKDSTNRDSLMIERICLVLCLDAPGGVELSDTHRALQLLHGGGYSKNGANR
WYDKSLQFVVGRDGTGCVVCEHSPFDGIVLVQCTEHLKHM TQSSRKLIRADSVSEL PAPERLRWKCSPE
IQGHLASSAEKLRIVKNLDFIVYKFDNYGKTFIKKQKCPDAFIQVALQLAFYRLHRRLVPTYESASIR
RFQEGRVDNIRSATPEALAFVRAVTDHKAAPASEKLLLLKDAIRAQTAYTVMAITGMAIDNHLALREL
ARAMCKELPEMFDETYLMSNRFVLSTSQVPTTTEMFCCYGPVVPNGYGACYNPQPETILFCISSFHSC
ETSSSKFAKAVEESLIDMRDLC SLLPPTESKPLATKEKATRPSQGHQP
```

SGPTRRRLEQKLISEEDLAANDILDYKDDDDKV

Chromatograms: https://cdn.origene.com/chromatograms/mk8040_e03.zip

Restriction Sites: SgfI-RsrII

Cloning Scheme:



ACCN: NM_020549

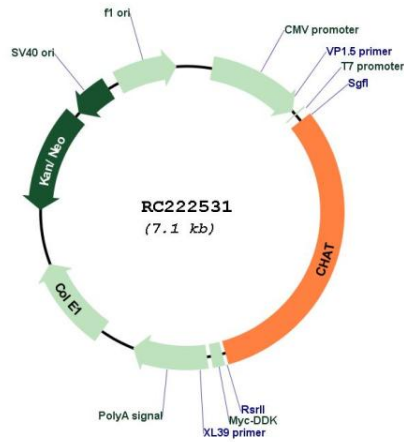
ORF Size: 2244 bp

OTI Disclaimer: The molecular sequence of this clone aligns with the gene accession number as a point of reference only. However, individual transcript sequences of the same gene can differ through naturally occurring variations (e.g. polymorphisms), each with its own valid existence. This clone is substantially in agreement with the reference, but a complete review of all prevailing variants is recommended prior to use. [More info](#)

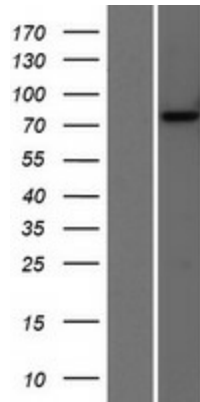
OTI Annotation: This clone was engineered to express the complete ORF with an expression tag. Expression varies depending on the nature of the gene.

Components:	The ORF clone is ion-exchange column purified and shipped in a 2D barcoded Matrix tube containing 10ug of transfection-ready, dried plasmid DNA (reconstitute with 100 ul of water).
Reconstitution Method:	<ol style="list-style-type: none">1. Centrifuge at 5,000xg for 5min.2. Carefully open the tube and add 100ul of sterile water to dissolve the DNA.3. Close the tube and incubate for 10 minutes at room temperature.4. Briefly vortex the tube and then do a quick spin (less than 5000xg) to concentrate the liquid at the bottom.5. Store the suspended plasmid at -20°C. The DNA is stable for at least one year from date of shipping when stored at -20°C.
RefSeq:	NM_020549.4 , NP_065574.3
RefSeq Size:	2485 bp
RefSeq ORF:	2247 bp
Locus ID:	1103
UniProt ID:	P28329
Cytogenetics:	10q11.23
Protein Families:	Druggable Genome
Protein Pathways:	Glycerophospholipid metabolism
MW:	82.4 kDa
Gene Summary:	<p>This gene encodes an enzyme which catalyzes the biosynthesis of the neurotransmitter acetylcholine. This gene product is a characteristic feature of cholinergic neurons, and changes in these neurons may explain some of the symptoms of Alzheimer's disease. Polymorphisms in this gene have been associated with Alzheimer's disease and mild cognitive impairment. Mutations in this gene are associated with congenital myasthenic syndrome associated with episodic apnea. Multiple transcript variants encoding different isoforms have been found for this gene, and some of these variants have been shown to encode more than one isoform. [provided by RefSeq, May 2010]</p>

Product images:



Circular map for RC222531



Western blot validation of overexpression lysate (Cat# [LY412419]) using anti-DDK antibody (Cat# [TA50011-100]). Left: Cell lysates from untransfected HEK293T cells; Right: Cell lysates from HEK293T cells transfected with RC222531 using transfection reagent MegaTran 2.0 (Cat# [TT210002]).