

Product datasheet for RC222527

MSMP (NM_001044264) Human Tagged ORF Clone

Product data:

Product Type: Expression Plasmids
Product Name: MSMP (NM_001044264) Human Tagged ORF Clone
Tag: Myc-DDK
Symbol: MSMP
Synonyms: PSMP
Mammalian Cell Selection: Neomycin
Vector: pCMV6-Entry (PS100001)
E. coli Selection: Kanamycin (25 ug/mL)
ORF Nucleotide Sequence: >RC222527 representing NM_001044264
Red=Cloning site Blue=ORF Green=Tags(s)

TTTTGTAATACGACTCACTATAGGGCGGCCGGAATTCGTCGACTGGATCCGGTACCGAGGAGATCTGCC
GCC**CGATCGCC**

ATGGCCCTAAGGATGCTCTGGGCTGGACAGGCCAAGGGGATCCTAGGAGGCTGGGGATCATCTGCTTGG
TGATGTCTCTACTCTCCAGCACCCAGGAGTCTACAGCAAGTGTCTACTTCCAAGCTCAAGCCCCCTGTCA
CTATGAGGGGAAATATTTACCCTGGGTGAGTCTTGGCTCCGCAAGGACTGTTTCCATTGCACCTGTCTG
CATCCTGTTGGCGTGGGCTGCTGTGACACGTCCCAGCATCCATCGACTTCCCGGCTGGGTGTGAGGTAC
GTCAGGAGGCAGGAACCTGCCAGTCTCCTTGGTGCAAAAATCTGACCCTCGGCTGCCCTGCAAAGGGGG
AGGGCCTGACCCAGAATGGGGCTCAGCCAACACCCTGTTCTGGGGCTCCTGCTCCCCACTCCAGC

ACGCGTACGCGGCCGCTCGAGCAGAACTCATCTCAGAAGAGGATCTGGCAGCAAATGATATCCTGGATT
ACAAGGATGACGACGATAAGGTTTAA

Protein Sequence: >RC222527 representing NM_001044264
Red=Cloning site Green=Tags(s)

MALRMLWAGQAKGILGGWGIICLVMSLLLQHPGVYSKCYFQAQAPCHYEGKYFTLGESWLRKDCFHCTCL
HPVGVGCCDTSQHPIDFPAGCEVRQEAGTCQFSLVQKSDPRLPCKGGGPDPEWGSANTPVPGAPPHSS

TRTRPLEQKLISEEDLAANDILDYKDDDDKV

Chromatograms: https://cdn.origene.com/chromatograms/mk8005_c08.zip

Restriction Sites: SgfI-MluI



[View online »](#)

Cloning Scheme:


ACCN: NM_001044264

ORF Size: 417 bp

OTI Disclaimer: The molecular sequence of this clone aligns with the gene accession number as a point of reference only. However, individual transcript sequences of the same gene can differ through naturally occurring variations (e.g. polymorphisms), each with its own valid existence. This clone is substantially in agreement with the reference, but a complete review of all prevailing variants is recommended prior to use. [More info](#)

OTI Annotation: This clone was engineered to express the complete ORF with an expression tag. Expression varies depending on the nature of the gene.

Components: The ORF clone is ion-exchange column purified and shipped in a 2D barcoded Matrix tube containing 10ug of transfection-ready, dried plasmid DNA (reconstitute with 100 ul of water).

Reconstitution Method:

1. Centrifuge at 5,000xg for 5min.
2. Carefully open the tube and add 100ul of sterile water to dissolve the DNA.
3. Close the tube and incubate for 10 minutes at room temperature.
4. Briefly vortex the tube and then do a quick spin (less than 5000xg) to concentrate the liquid at the bottom.
5. Store the suspended plasmid at -20°C. The DNA is stable for at least one year from date of shipping when stored at -20°C.

RefSeq: [NM_001044264.3](#)

RefSeq Size: 672 bp

RefSeq ORF: 420 bp

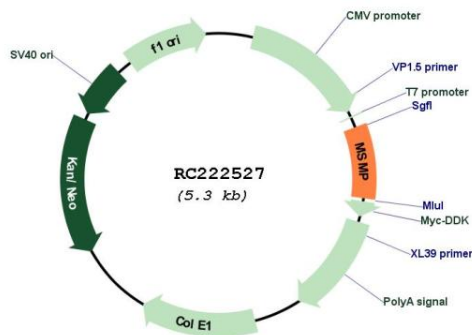
Locus ID: 692094

UniProt ID: [Q1L6U9](#)

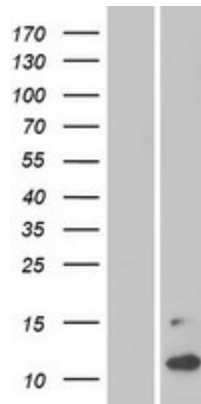
Cytogenetics: 9p13.3
Protein Families: Transmembrane
MW: 14.99 kDa

Gene Summary: This gene encodes a member of the beta-microseminoprotein family. Members of this protein family contain ten conserved cysteine residues that form intra-molecular disulfide bonds. The encoded protein may play a role in prostate cancer tumorigenesis. [provided by RefSeq, Jan 2011]

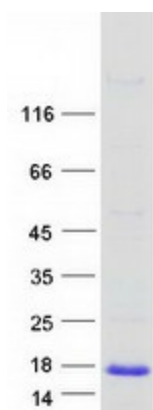
Product images:



Circular map for RC222527



Western blot validation of overexpression lysate (Cat# [LY420820]) using anti-DDK antibody (Cat# [TA50011-100]). Left: Cell lysates from untransfected HEK293T cells; Right: Cell lysates from HEK293T cells transfected with RC222527 using transfection reagent MegaTran 2.0 (Cat# [TT210002]).



Coomassie blue staining of purified MSMP protein (Cat# [TP322527]). The protein was produced from HEK293T cells transfected with MSMP cDNA clone (Cat# RC222527) using MegaTran 2.0 (Cat# [TT210002]).