

Product datasheet for RC222498L4

Proprotein Convertase 2 (PCSK2) (NM_002594) Human Tagged Lenti ORF Clone

Product data:

| | |
|---------------------------|--|
| Product Type: | Expression Plasmids |
| Product Name: | Proprotein Convertase 2 (PCSK2) (NM_002594) Human Tagged Lenti ORF Clone |
| Tag: | mGFP |
| Symbol: | Proprotein Convertase 2 |
| Synonyms: | NEC-2; NEC 2; NEC2; PC2; SPC2 |
| Mammalian Cell Selection: | Puromycin |
| Vector: | pLenti-C-mGFP-P2A-Puro (PS100093) |
| E. coli Selection: | Chloramphenicol (34 ug/mL) |
| ORF Nucleotide Sequence: | The ORF insert of this clone is exactly the same as(RC222498). |
| Restriction Sites: | SgfI-MluI |
| Cloning Scheme: | |

Cloning sites used for ORF Shuttling:



* The last codon before the Stop codon of the ORF.

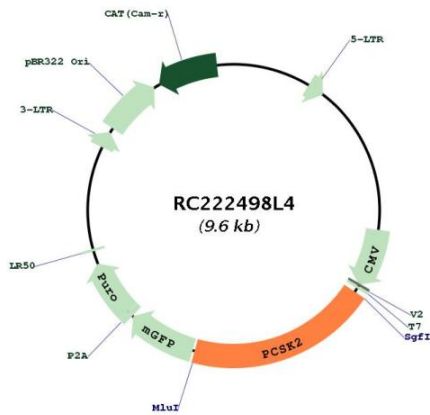
| | |
|-----------|-----------|
| ACCN: | NM_002594 |
| ORF Size: | 1914 bp |



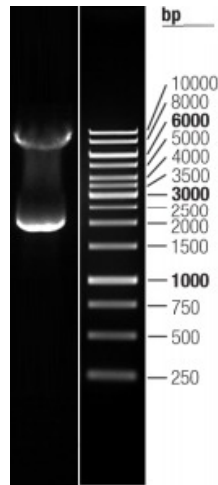
[View online »](#)

| | |
|-------------------------------|---|
| OTI Disclaimer: | The molecular sequence of this clone aligns with the gene accession number as a point of reference only. However, individual transcript sequences of the same gene can differ through naturally occurring variations (e.g. polymorphisms), each with its own valid existence. This clone is substantially in agreement with the reference, but a complete review of all prevailing variants is recommended prior to use. More info |
| OTI Annotation: | This clone was engineered to express the complete ORF with an expression tag. Expression varies depending on the nature of the gene. |
| Components: | The ORF clone is ion-exchange column purified and shipped in a 2D barcoded Matrix tube containing 10ug of transfection-ready, dried plasmid DNA (reconstitute with 100 ul of water). |
| Reconstitution Method: | <ol style="list-style-type: none">1. Centrifuge at 5,000xg for 5min.2. Carefully open the tube and add 100ul of sterile water to dissolve the DNA.3. Close the tube and incubate for 10 minutes at room temperature.4. Briefly vortex the tube and then do a quick spin (less than 5000xg) to concentrate the liquid at the bottom.5. Store the suspended plasmid at -20°C. The DNA is stable for at least one year from date of shipping when stored at -20°C. |
| RefSeq: | NM_002594.2 |
| RefSeq Size: | 4745 bp |
| RefSeq ORF: | 1917 bp |
| Locus ID: | 5126 |
| UniProt ID: | P16519 |
| Cytogenetics: | 20p12.1 |
| Domains: | Peptidase_S8, P |
| Protein Families: | Druggable Genome, Protease, Secreted Protein |
| MW: | 70.57 kDa |
| Gene Summary: | This gene encodes a member of the subtilisin-like proprotein convertase family, which includes proteases that process protein and peptide precursors trafficking through regulated or constitutive branches of the secretory pathway. The protein undergoes an initial autocatalytic processing event and interacts with a neuroendocrine secretory protein in the ER, exits the ER and sorts to secretory granules, where it is cleaved and catalytically activated during intracellular transport. The encoded protease is packaged into and activated in dense core secretory granules and expressed in the neuroendocrine system and brain. This gene encodes one of the seven basic amino acid-specific members which cleave their substrates at single or paired basic residues. It functions in the proteolytic activation of polypeptide hormones and neuropeptides precursors. Single nucleotide polymorphisms in this gene may increase susceptibility to myocardial infarction and type 2 diabetes. This gene may also play a role in tumor development and progression. Alternatively spliced transcript variants encoding multiple isoforms have been observed for this gene. [provided by RefSeq, Jan 2014] |

Product images:



Circular map for RC222498L4



Double digestion of RC222498L4 using SgfI and MluI