

## Product datasheet for **RC222497**

### MEIS2 (NM\_172316) Human Tagged ORF Clone

#### Product data:

**Product Type:** Expression Plasmids  
**Product Name:** MEIS2 (NM\_172316) Human Tagged ORF Clone  
**Tag:** Myc-DDK  
**Symbol:** MEIS2  
**Synonyms:** CPCMR; HsT18361; MRG1  
**Mammalian Cell Selection:** Neomycin  
**Vector:** pCMV6-Entry (PS100001)  
**E. coli Selection:** Kanamycin (25 ug/mL)  
**ORF Nucleotide Sequence:** >RC222497 representing NM\_172316  
Red=Cloning site Blue=ORF Green=Tags(s)

TTTTGTAATACGACTCACTATAGGGCGCCGGGAATTCGTCGACTGGATCCGGTACCGAGGAGATCTGCC  
GCC**CGATCGCC**

ATGGCTCTGGTCTTTGAGAAGTGCAGCTGGCGACCTGCACTCCCCGGGAACCTGGAGTGGCTGGCGGAG  
ACGTCTGCTCCTCCGACTCCTTCAACGAGGACATCGCGGTCTTCGCCAAGCAGGTTCCGCGCCGAAAAGCC  
ACTTTTTCTCAAATCCAGAGCTGGACAATTTGATGATACAAGCAATACAAGTACTAAGGTTTCATCTT  
TTGGAGTTAGAAAAGTCCACGAACTGTGCGATAACTTCTGCCACCGATACATTAGCTGTTGAAGGGGA  
AAATGCCCATCGACCTCGTCATTGATGAAAGAGACGGCAGCTCCAAGTCAGATCATGAAGAACTTTCAGG  
CTCCTCCACAAATCTCGCTGACCATAACCTTCTTCTTGGCGAGACCACGATGATGCAACCTCAACCCAC  
TCAGCAGGCACCCAGGGCCCTCCAGTGGGGCCATGCTTCCCAGAGCGGAGACAACAGCAGTGAGCAAG  
GGGATGGTTTAGACAACAGTGTAGCTTACCTGGTACAGGTGACGATGATGATCCGGATAAGGACAAAA  
ACGCCAGAAGAAAAGAGGCATTTTCCCCAAAGTAGCAACAAATATCATGAGAGCATGGCTCTTCCAGCAT  
CTCACACATCCGTACCCTTCCGAAGAGCAGAAGAAACAGTTAGCGCAAGACACAGGACTTACAATTCTCC  
AAGTAAACAACCTGGTTTATTAATGCCAGAAGAAGAATAGTACAGCCCATGATTGACCAGTCAAATCGAGC  
AGTGAGCCAAGGAGCAGCATATAGTCCAGAGGGTCAGCCCATGGGAGCTTTGTGTTGGATGGTCAGCAA  
CACATGGGGATCCGGCTGCAGGACCTATGAGTGAATGGGCATGAATATGGGCATGGATGGGCAATGGC  
ACTACATG

**ACGCGT**ACGCGGCCGCTCGAGCAGAACTCATCTCAGAAGAGGATCTGGCAGCAAATGATATCCTGGATT  
ACAAGGATGACGACGATAAGGTTTAA



[View online »](#)

**Protein Sequence:** >RC222497 representing NM\_172316  
 Red=Cloning site Green=Tags(s)

MALVFEKCELATCTPREPGVAGGDVCSSEDFNEDIAVFAKQVRAEKPLFSSNPEDNLMIQAIQVLRFHLL  
 LELEKVHELCDNFCHRYISCLKGGKMPIDLVIDERDSSKSDHEELSGSSTNLADHNPSSWRDHDDATSTH  
 SAGTPGPSSGGHASQSGDNSSEQGDGLDNSVASPGTGDDDDPKDKRQKKRGIKPKVATNIMRAWLFQH  
 LTHPYPSEEQKKQLAQDTGLTILQVNNWFINARRRIVQPMIDQSNRAVSQGAAYSPEGQPMGFSVLDGQQ  
 HMGIRPAGPMSGMGMMGMDGQWHYM

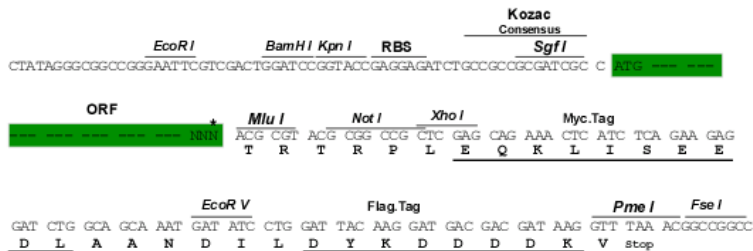
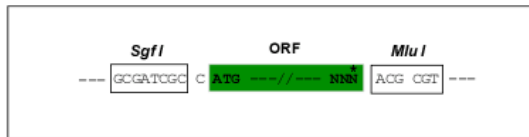
TRTRPLEQKLISEEDLAANDILDYKDDDDKV

**Chromatograms:** [https://cdn.origene.com/chromatograms/mk8051\\_g12.zip](https://cdn.origene.com/chromatograms/mk8051_g12.zip)

**Restriction Sites:** Sgfi-MluI

**Cloning Scheme:**

Cloning sites used for ORF Shutting:



\* The last codon before the Stop codon of the ORF

**ACCN:** NM\_172316

**ORF Size:** 918 bp

**OTI Disclaimer:** The molecular sequence of this clone aligns with the gene accession number as a point of reference only. However, individual transcript sequences of the same gene can differ through naturally occurring variations (e.g. polymorphisms), each with its own valid existence. This clone is substantially in agreement with the reference, but a complete review of all prevailing variants is recommended prior to use. [More info](#)

**OTI Annotation:** This clone was engineered to express the complete ORF with an expression tag. Expression varies depending on the nature of the gene.

**Components:** The ORF clone is ion-exchange column purified and shipped in a 2D barcoded Matrix tube containing 10ug of transfection-ready, dried plasmid DNA (reconstitute with 100 ul of water).

**Reconstitution Method:**

1. Centrifuge at 5,000xg for 5min.
2. Carefully open the tube and add 100ul of sterile water to dissolve the DNA.
3. Close the tube and incubate for 10 minutes at room temperature.
4. Briefly vortex the tube and then do a quick spin (less than 5000xg) to concentrate the liquid at the bottom.
5. Store the suspended plasmid at -20°C. The DNA is stable for at least one year from date of shipping when stored at -20°C.

**RefSeq:** [NM\\_172316.2](#)

**RefSeq Size:** 3175 bp

**RefSeq ORF:** 921 bp

**Locus ID:** 4212

**UniProt ID:** [O14770](#)

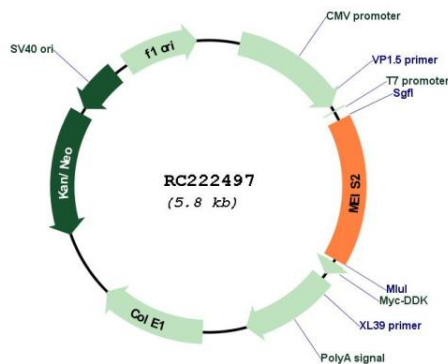
**Cytogenetics:** 15q14

**Protein Families:** Transcription Factors

**MW:** 33.4 kDa

**Gene Summary:** This gene encodes a homeobox protein belonging to the TALE ('three amino acid loop extension') family of homeodomain-containing proteins. TALE homeobox proteins are highly conserved transcription regulators, and several members have been shown to be essential contributors to developmental programs. Multiple transcript variants encoding distinct isoforms have been described for this gene. [provided by RefSeq, Jul 2008]

**Product images:**



Circular map for RC222497