

Product datasheet for RC222492

tenomodulin (TNMD) (NM_022144) Human Tagged ORF Clone

Product data:

Product Type:	Expression Plasmids
Product Name:	tenomodulin (TNMD) (NM_022144) Human Tagged ORF Clone
Tag:	Myc-DDK
Symbol:	tenomodulin
Synonyms:	BRICD4; CHM1L; TEM
Mammalian Cell Selection:	Neomycin
Vector:	pCMV6-Entry (PS100001)
E. coli Selection:	Kanamycin (25 ug/mL)
ORF Nucleotide Sequence:	>RC222492 representing NM_022144 Red=Cloning site Blue=ORF Green=Tags(s)

TTTTGTAATACGACTCACTATAGGGCGGCCGGAATTCGTCGACTGGATCCGGTACCGAGGAGATCTGCC
GCC**CGATCGCC**

ATGGCAAAGAATCCTCCAGAGAATTGTGAAGACTGTCACATTCTAAATGCAGAAGCTTTAAATCCAAGA
AAATATGTAATCACTTAAGATTTGTGGACTGGTGTGGTATCCTGACCCTAACTAATTGTCCTGTT
TTGGGGGAGCAAGCACTTCTGGCCGGAGGTACCCAAAAAGCCTATGACATGGAGCACACTTTCTACAGC
AGTGGAGAGAAGAAGATTTACATGGAATTTGATCCTGTGACCAGAAGTAAATATTCAGAAGCGGAA
ATGGCACTGATGAAACATTGGAAGTACAGCACTTTAAAAACGGATACACTGGCATCTACTTCGTGGTCT
TCAAAAATGTTTTATCAAACTCAGATTAAGTATTCTGAATTTCTGAACCAGAAAGAGAAATAGAT
GAGAATGAAGAAATTACCACAACCTTTCTTTGAACAGTCAGTGATTTGGGTCCCAGCAGAAAAGCCTATTG
AAAACCGAGATTTCTTAAAAATCCAATTTCTGGAGATTTGTGATAACGTGACCATGTATTGGATCAA
TCCCACTTAATATCAGTTTCTGAGTTACAAGACTTTGAGGAGGAGGAGAAGATCTTCACTTTCTGCC
AACGAAAAAAGGGATTGAACAAAATGAACAGTGGGTGGTCCCTCAAGTGAAGTAGAGAAGACCCGTC
ACGCCAGACAAGCAAGTGAAGAACTTCCAATAATGACTATACTGAAATGGAATAGAATTTGATCC
CATGCTGGATGAGAGAGGTTATTGTTGATTTACTGCCGTCGAGGCAACCGCTATTGCCGCCGCTGT
GAACCTTTACTAGGCTACTACCCATATCCATACTGCTACCAAGGAGGACGAGTCATCTGTGTCATCA
TGCCCTTAACTGGTGGTGGCCCGCATGCTGGGAGGGTC

ACGCGTACGCGGCCGCTCGAGCAGAACTCATCTCAGAAGAGGATCTGGCAGCAATGATATCCTGGATT
ACAAGGATGACGACGATAAGGTTTAA



[View online »](#)

Protein Sequence: >RC222492 representing NM_022144
Red=Cloning site Green=Tags(s)

MAKNPPENCEDCHILNAEAFKSKKICKSLKICGLVFGILTLTLIVLFWGSKHFWPEVPPKAYDMEHTFYS
 SGEKKKIYMEIDPVTRTEIFRSGNGTDETLVHDFKNGYTGIIYFVGLQKCFIKTQIKVIPEFSEPEEID
 ENEEITTTFFEQSVIWPVPAEKPIENRDFLKNKILEICDNVTMYWINPTLISVSELQDFEEEGEDLHFPA
 NEKKGIEQNEQWVVPQVKVEKTRHARQASEEELPINDYTENGIEFDPMLDERGYCCIIYCRGRNRYCRRVC
 EPLLGYYPYCYQGGRVICRVIMPCNWWVARMGRV

TRTRPLEQKLISEEDLAANDILDYKDDDDKV

Chromatograms: https://cdn.origene.com/chromatograms/mk8010_g03.zip

Restriction Sites: SgfI-MluI

Cloning Scheme:



ACCN: NM_022144

ORF Size: 951 bp

OTI Disclaimer: The molecular sequence of this clone aligns with the gene accession number as a point of reference only. However, individual transcript sequences of the same gene can differ through naturally occurring variations (e.g. polymorphisms), each with its own valid existence. This clone is substantially in agreement with the reference, but a complete review of all prevailing variants is recommended prior to use. [More info](#)

OTI Annotation: This clone was engineered to express the complete ORF with an expression tag. Expression varies depending on the nature of the gene.

Components: The ORF clone is ion-exchange column purified and shipped in a 2D barcoded Matrix tube containing 10ug of transfection-ready, dried plasmid DNA (reconstitute with 100 ul of water).

Reconstitution Method:

1. Centrifuge at 5,000xg for 5min.
2. Carefully open the tube and add 100ul of sterile water to dissolve the DNA.
3. Close the tube and incubate for 10 minutes at room temperature.
4. Briefly vortex the tube and then do a quick spin (less than 5000xg) to concentrate the liquid at the bottom.
5. Store the suspended plasmid at -20°C. The DNA is stable for at least one year from date of shipping when stored at -20°C.

RefSeq: [NM_022144.1](#), [NP_071427.1](#)

RefSeq Size: 1309 bp

RefSeq ORF: 954 bp

Locus ID: 64102

UniProt ID: [Q9H2S6](#)

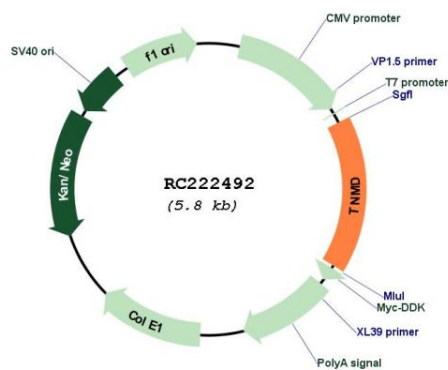
Cytogenetics: Xq22.1

Protein Families: Transmembrane

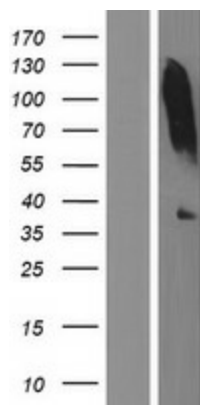
MW: 37 kDa

Gene Summary: This gene encodes a protein that is related to chondromodulin-I, which is a cartilage-specific glycoprotein that functions to stimulate chondrocyte growth and to inhibit tube formation of endothelial cells. This protein is also an angiogenesis inhibitor. Genetic variation in this gene is associated with a risk for type 2 diabetes, central obesity and serum levels of systemic immune mediators in a body size-dependent manner. This gene is also a candidate gene for age-related macular degeneration, though a direct link has yet to be demonstrated. [provided by RefSeq, Sep 2009]

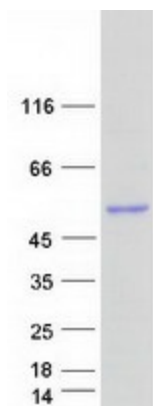
Product images:



Circular map for RC222492



Western blot validation of overexpression lysate (Cat# [LY411749]) using anti-DDK antibody (Cat# [TA50011-100]). Left: Cell lysates from untransfected HEK293T cells; Right: Cell lysates from HEK293T cells transfected with RC222492 using transfection reagent MegaTran 2.0 (Cat# [TT210002]).



Coomassie blue staining of purified TNMD protein (Cat# [TP322492]). The protein was produced from HEK293T cells transfected with TNMD cDNA clone (Cat# RC222492) using MegaTran 2.0 (Cat# [TT210002]).