

Product datasheet for RC222481

C21orf62 (NM_019596) Human Tagged ORF Clone

Product data:

Product Type: Expression Plasmids
Product Name: C21orf62 (NM_019596) Human Tagged ORF Clone
Tag: Myc-DDK
Symbol: C21orf62
Synonyms: B37; C21orf120; PRED81
Mammalian Cell Selection: Neomycin
Vector: pCMV6-Entry (PS100001)
E. coli Selection: Kanamycin (25 ug/mL)
ORF Nucleotide Sequence: >RC222481 representing NM_019596.
Blue=ORF Red=Cloning site Green=Tag(s)

```
GCTCGTTTAGTGAACCGTCAGAATTTGTAAACGACTCACTATAGGGCGCCGGGAATTCGTCGACTG
GATCCGGTACCGAGGAGATCTGCCGCCGCGATCGCC
ATGGCACCACTTCCAGGCACTGTCTTCTCTGATCAGCACTCTGGGTGTCTTGCACCTAACTGCCTC
ACCAAAGGTCAGAAGAACAGCAGCTCATCTTCAAGGGAAAACACCATTTCGGAAGTGCAGCTGTTCT
GCGGACATCCGGGATTGTGACTACAGTTTGCCCAACCTGATGTGCAACTGTAAAACCGTCTGCCCTT
GCAGTAGAGCGAACCAGCTACAATGGCCATCTGACCATCTGGTTCACGGACACATCTGCGCTGGCCAC
CTGCTGAACCTCACGCTGGTCCAAGACCTGAAGCTTCCCTGTGCAGCACCAACTCTCCCACTGAA
TACCTGGCTATTTGTGGTCTGAAGAGGCTGCGCATCAACATGGAGCCAAGCATCCCTTCCAGAGCAG
AGCTTACTCATCCATAGCGGTGGGACAGTGACTCCAGAGAGAAGCCCATGTGGTTACACAAAGGCTGG
CAGCCATGTATGTATATCTATTCTTAGATATGGCTCTTTTCAACAGGGACTCAGCCTTAAATCATAT
AGTATTGAAAACGTTACCAGCATTGCCAACACTTTCCTGACTTTTCTTACTTTAGAACCTTCCCAATG
CCAAGCAACAAAAGCTATGTTGTCACATTTATTTAC
ACGCGTACGCGGCCGCTCGAGCAGAAACTCATCTCAGAAGAGGATCTGGCAGCAAATGATATCCTGGAT
TACAAGGATGACGACGATAAGGTTTAAACGGCCGCGC
```

Protein Sequence: >Peptide sequence encoded by RC222481
Blue=ORF Red=Cloning site Green=Tag(s)

```
MAPPSRHCLLLISTLGVFALNCFKQKNSLIFTRENTIRNCSADIRDCDYSANLMCNCKTVLPL
AVERTSYNGHLTIWFTDTSALGHLLNFTLVQDLKLSLCSNTLPTEYLAICGLKRLRINMEAKHPFPEQ
SLLIHSGDSDSREKPMWLHKGWQPCMYISFLDMALFNRSALKSYSIENVTSIANNFPDFSYFRTFPM
PSNKSYYVTFIY
TRTRPLEQKLISEEDLAANDILDYKDDDDKV
```

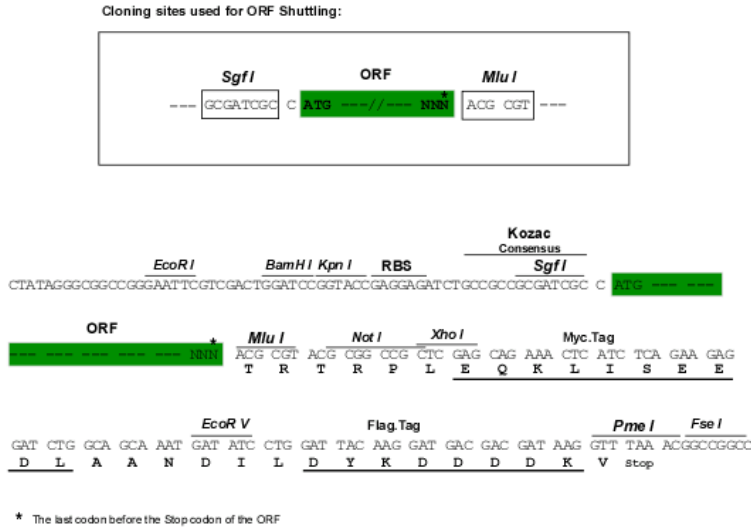
Chromatograms: https://cdn.origene.com/chromatograms/mg4413_c11.zip



[View online »](#)

Restriction Sites: SgfI-MluI

Cloning Scheme:



ACCN: NM_019596

ORF Size: 657 bp

OTI Disclaimer: The molecular sequence of this clone aligns with the gene accession number as a point of reference only. However, individual transcript sequences of the same gene can differ through naturally occurring variations (e.g. polymorphisms), each with its own valid existence. This clone is substantially in agreement with the reference, but a complete review of all prevailing variants is recommended prior to use. [More info](#)

OTI Annotation: This clone was engineered to express the complete ORF with an expression tag. Expression varies depending on the nature of the gene.

Components: The ORF clone is ion-exchange column purified and shipped in a 2D barcoded Matrix tube containing 10ug of transfection-ready, dried plasmid DNA (reconstitute with 100 ul of water).

Reconstitution Method:

1. Centrifuge at 5,000xg for 5min.
2. Carefully open the tube and add 100ul of sterile water to dissolve the DNA.
3. Close the tube and incubate for 10 minutes at room temperature.
4. Briefly vortex the tube and then do a quick spin (less than 5000xg) to concentrate the liquid at the bottom.
5. Store the suspended plasmid at -20°C. The DNA is stable for at least one year from date of shipping when stored at -20°C.

RefSeq: [NM_019596.6](#)

RefSeq Size: 4009 bp

RefSeq ORF: 660 bp

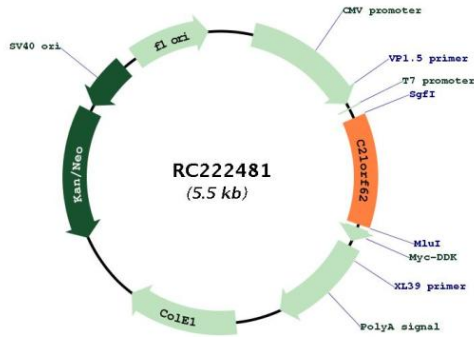
Locus ID: 56245

UniProt ID: [Q9NYP8](#)

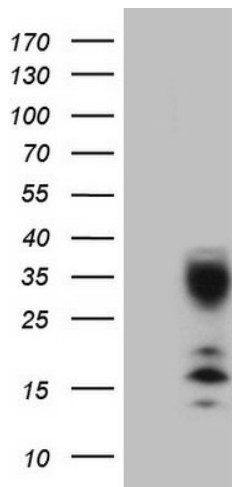
Cytogenetics: 21q22.11

MW: 24.9 kDa

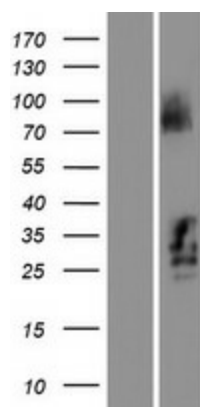
Product images:



Circular map for RC222481



HEK293T cells were transfected with the pCMV6-ENTRY control (Cat# [PS100001], Left lane) or pCMV6-ENTRY C21orf62 (Cat# RC222481, Right lane) cDNA for 48 hrs and lysed. Equivalent amounts of cell lysates (5 ug per lane) were separated by SDS-PAGE and immunoblotted with anti-C21orf62 (Cat# [TA808848])(1:2000). Positive lysates [LY412723] (100ug) and [LC412723] (20ug) can be purchased separately from OriGene.



Western blot validation of overexpression lysate (Cat# [LY412723]) using anti-DDK antibody (Cat# [TA50011-100]). Left: Cell lysates from untransfected HEK293T cells; Right: Cell lysates from HEK293T cells transfected with RC222481 using transfection reagent MegaTran 2.0 (Cat# [TT210002]).